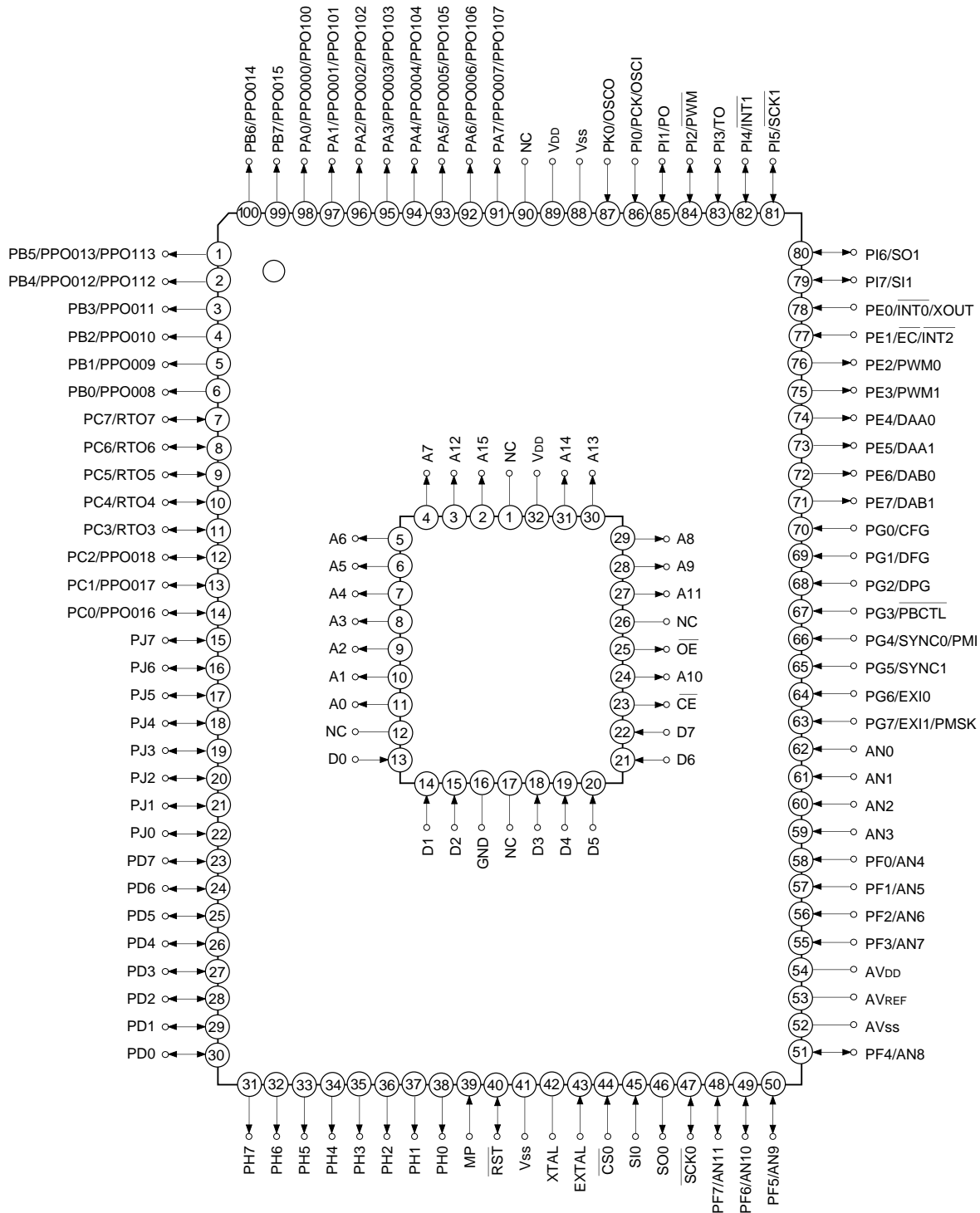
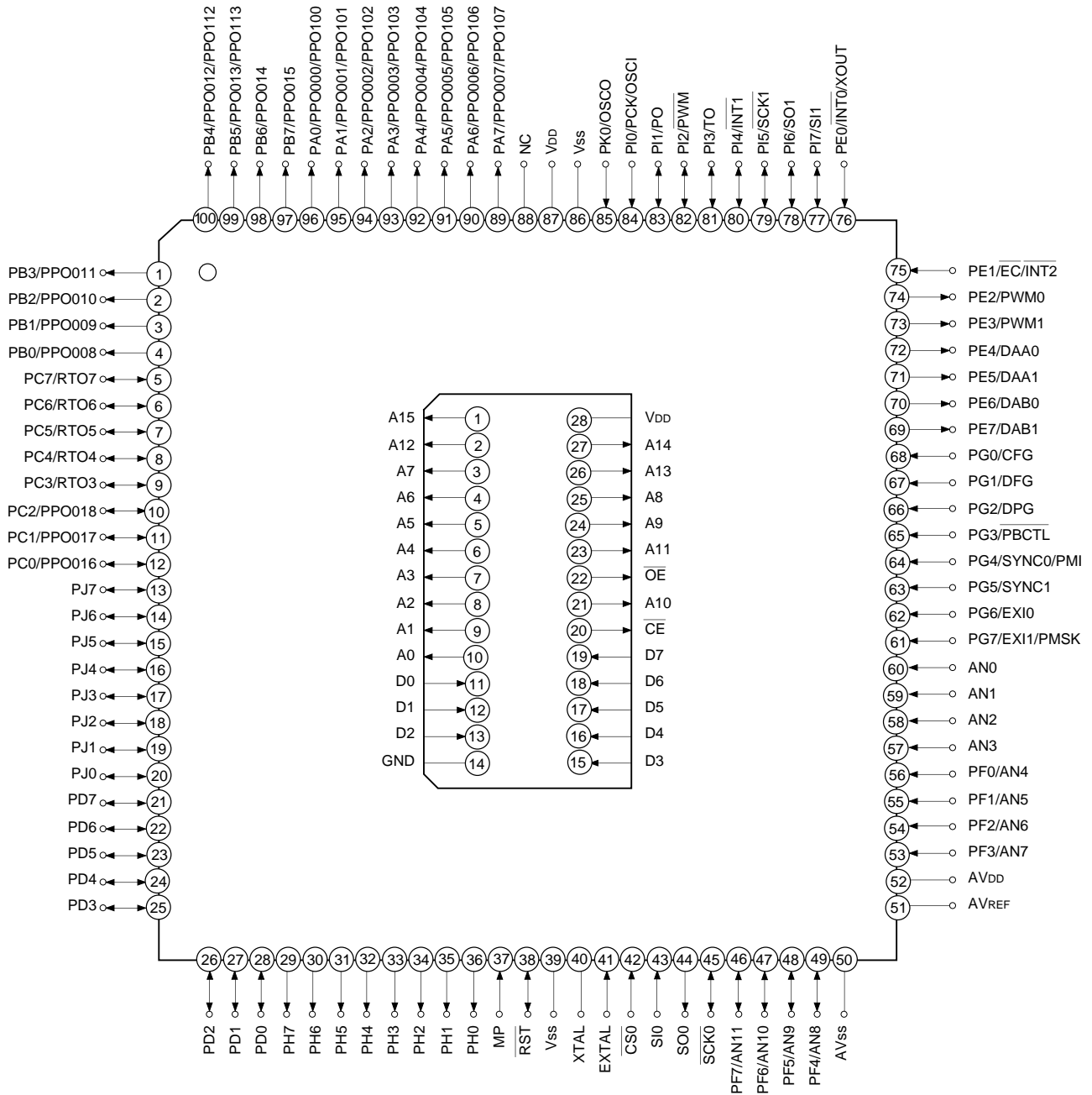


Pin Assignment in Piggyback Mode (QFP package)



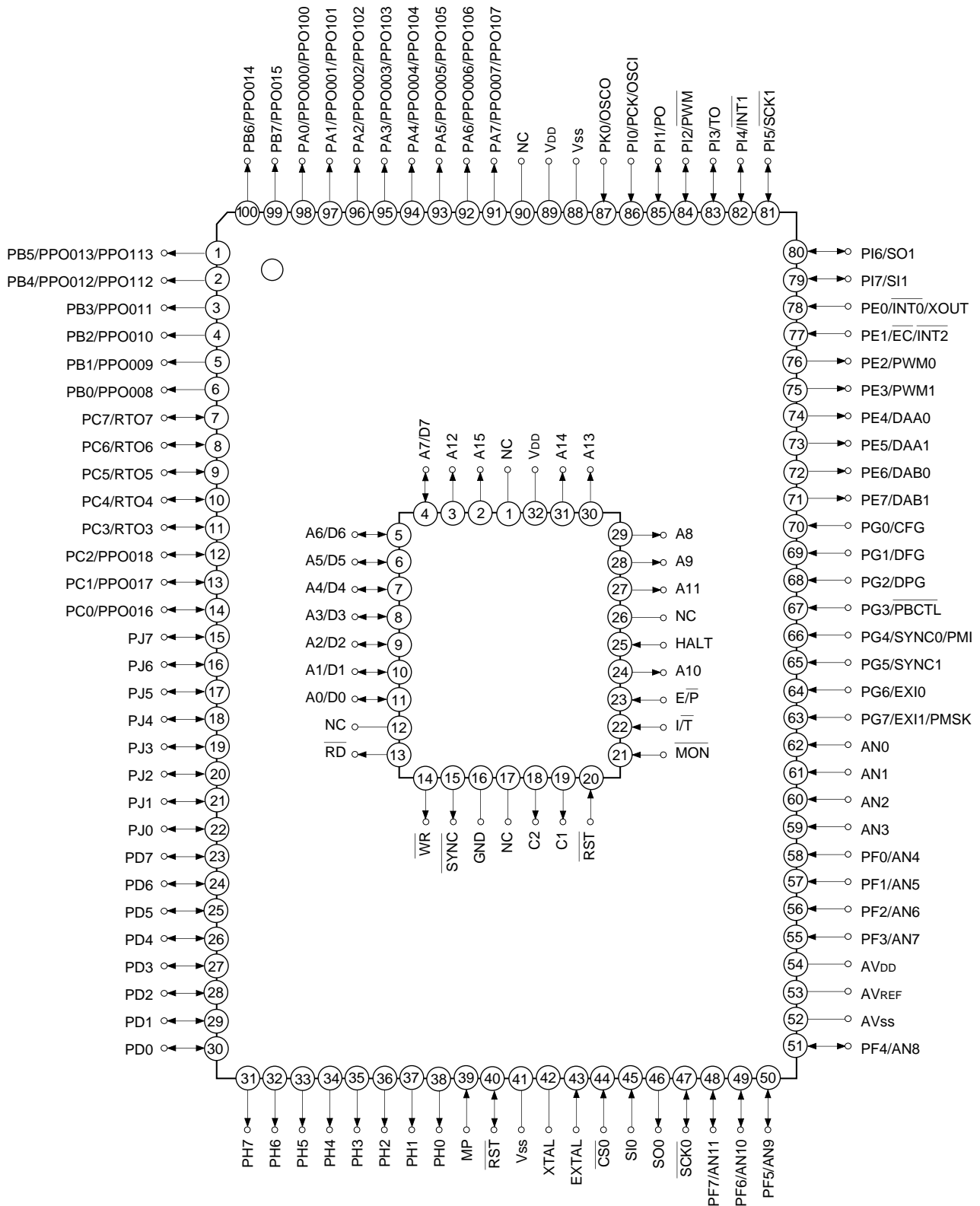
- Note)**
1. NC (Pin 90) is always connected to V_{DD}.
 2. V_{SS} (Pins 41 and 88) are both connected to GND.
 3. MP (Pin 39) is always connected to GND.

Pin Assignment in Piggyback Mode (LQFP package)



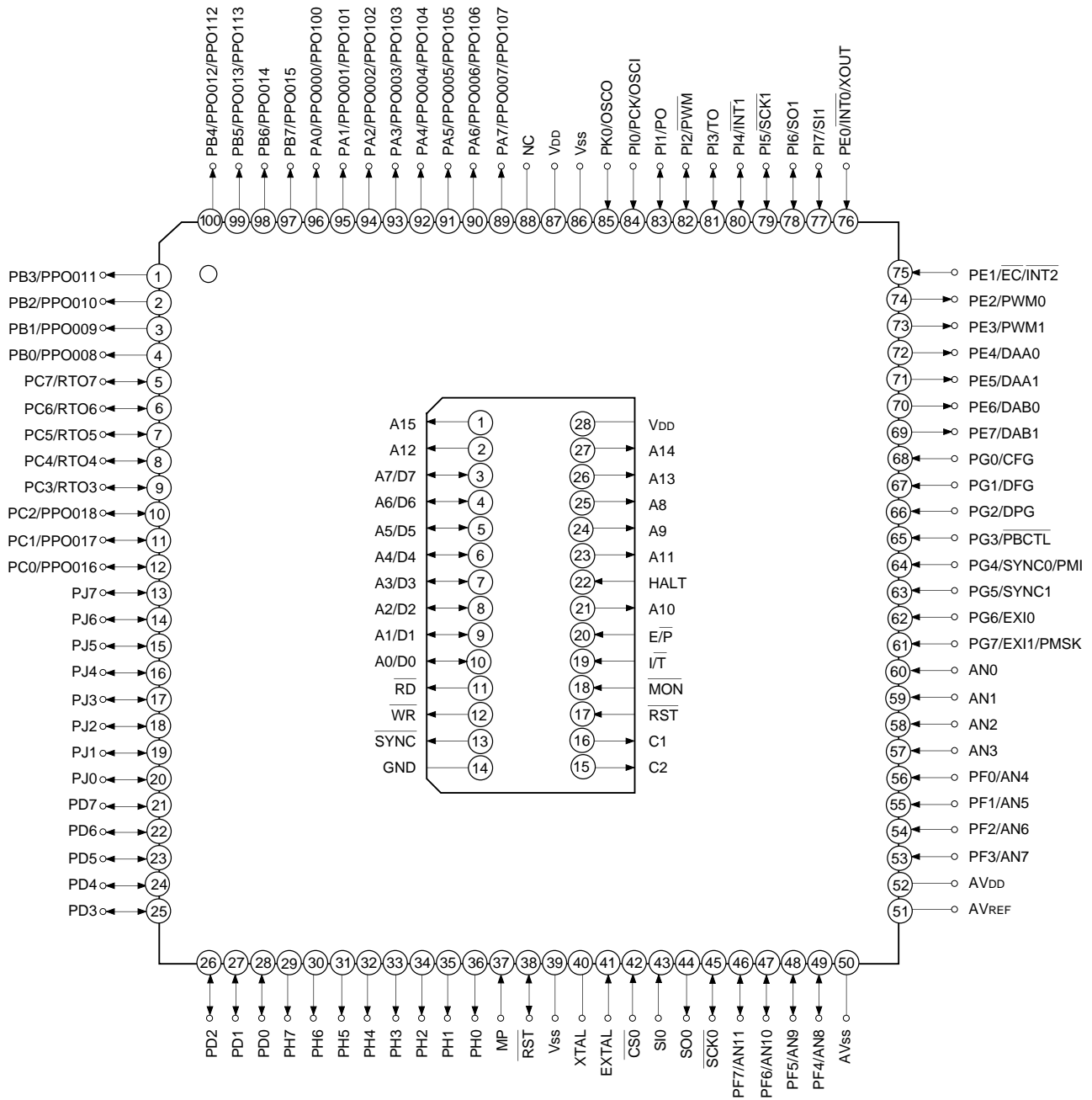
- Note**
1. NC (Pin 88) is always connected to VDD.
 2. Vss (Pins 39 and 86) are both connected to GND.
 3. MP (Pin 37) is always connected to GND.

Pin Assignment in Evaluator Mode (QFP package)



- Note)** 1. NC (Pin 90) is always connected to V_{DD}.
 2. V_{SS} (Pins 41 and 88) are both connected to GND.
 3. MP (Pin 39) is always connected to GND.

Pin Assignment in Evaluator Mode (LQFP package)



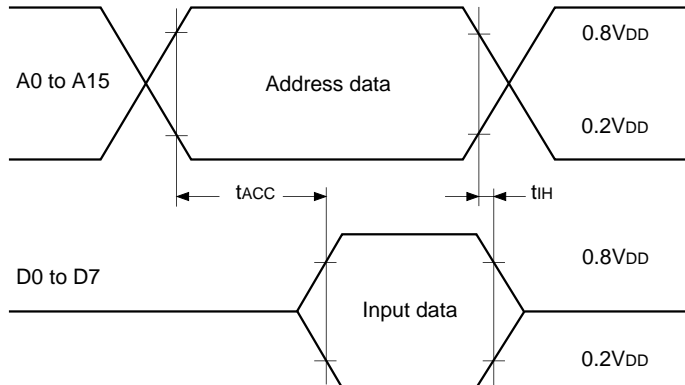
- Note**
1. NC (Pin 88) is always connected to V_{DD}.
 2. V_{SS} (Pins 39 and 86) are both connected to GND.
 3. MP (Pin 37) is always connected to GND.

EPROM Read Timing ($T_a = -20$ to $+75^\circ\text{C}$, $V_{DD} = 3.0$ to 5.5V , $V_{SS} = 0\text{V}$)

Item	Symbol	Pin	Min.	Max.	Unit
Address → data input delay time	t_{ACC}	A0 to A15 D0 to D7		100* ¹	ns
				75* ²	
Address → data hold time	t_{IH}	A0 to A15 D0 to D7	0		ns

*¹ At 12MHz operation ($V_{DD} = 4.5$ to 5.5V)

*² At 12MHz operation ($V_{DD} = 3.0$ to 5.5V), At 16MHz operation ($V_{DD} = 4.5$ to 5.5V)

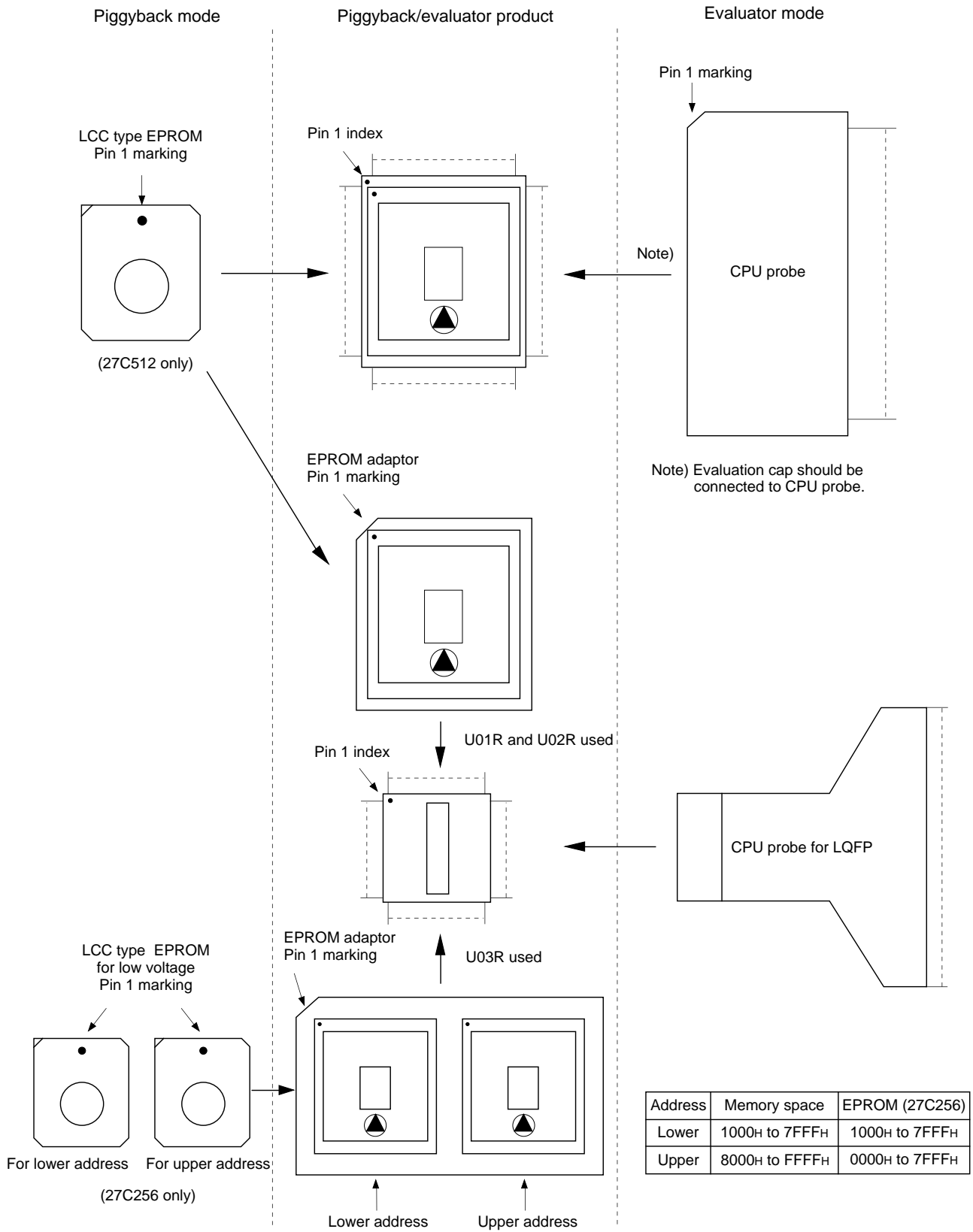


Products List

Option item	Products				
	Mask product		Piggyback/evaluator product		
	CXP87452	CXP87460	CXP87400-U01Q CXP87400-U01R	CXP87400-U02Q CXP87400-U02R	CXP87400-U03R
Package	100-pin plastic QFP/LQFP		100-pin ceramic PQFP		
ROM capacity	52Kbytes	60Kbytes	EPROM 60Kbytes		
			27C512 × 1	27C512 × 1	27C256 × 2
Pull-up resistor for reset pin	Existent/Non-existent		Existent		
Power on reset circuit	Existent/Non-existent		Existent		
General-purpose prescaler oscillation circuit	Existent/Non-existent		Non-existent	Existent	Non-existent
Input circuit format* ³	CMOS schmitt/TTL schmitt		CMOS schmitt	TTL schmitt	CMOS schmitt

*³ On PG4/SYNC0 pin and PG5/SYNC1 pin, the input circuit format can be selected to every pin.

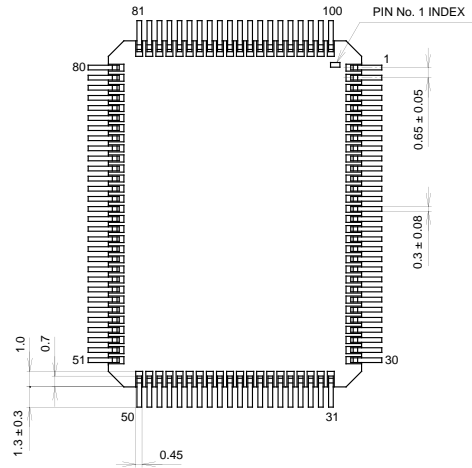
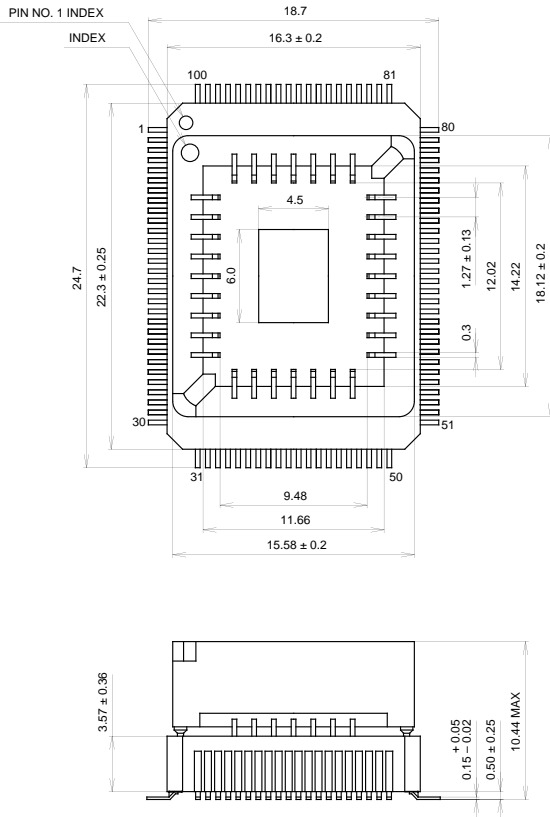
Piggyback mode/evaluator mode can be switched as shown below.



Package Outline

Unit: mm

100PIN PQFP (CERAMIC)

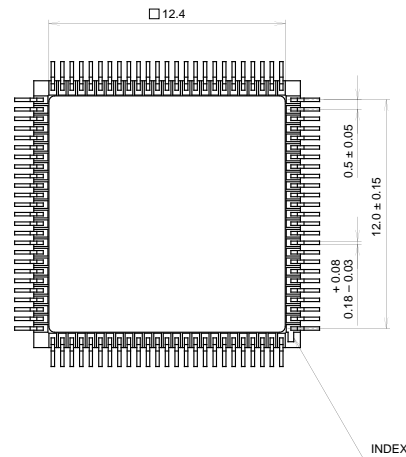
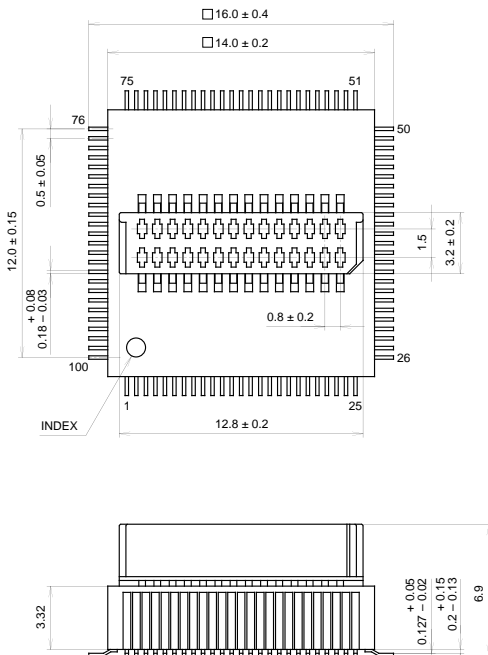


PACKAGE STRUCTURE

SONY CODE	PQFP-100C-L01
EIAJ CODE	AQFP100-C-0000-A
JEDEC CODE	—

PACKAGE MATERIAL	CERAMIC
LEAD TREATMENT	GOLD PLATING
LEAD MATERIAL	42 ALLOY
PACKAGE WEIGHT	5.7g

100PIN PQFP (CERAMIC)



PACKAGE STRUCTURE

SONY CODE	PQFP-100C-L02
EIAJ CODE	AQFP100-C-1414-A
JEDEC CODE	—

PACKAGE MATERIAL	CERAMIC
LEAD TREATMENT	GOLD PLATING
LEAD MATERIAL	42 ALLOY
PACKAGE WEIGHT	2.2g



LittleDiode supplies new, hard to find or obsolete electronic components and semiconductors all over the world.

With over two million different components listed you are sure to find the part you need.

Feel free to visit us today at our online store:

LittleDiode.com

Looking forward to providing you with the best possible service.