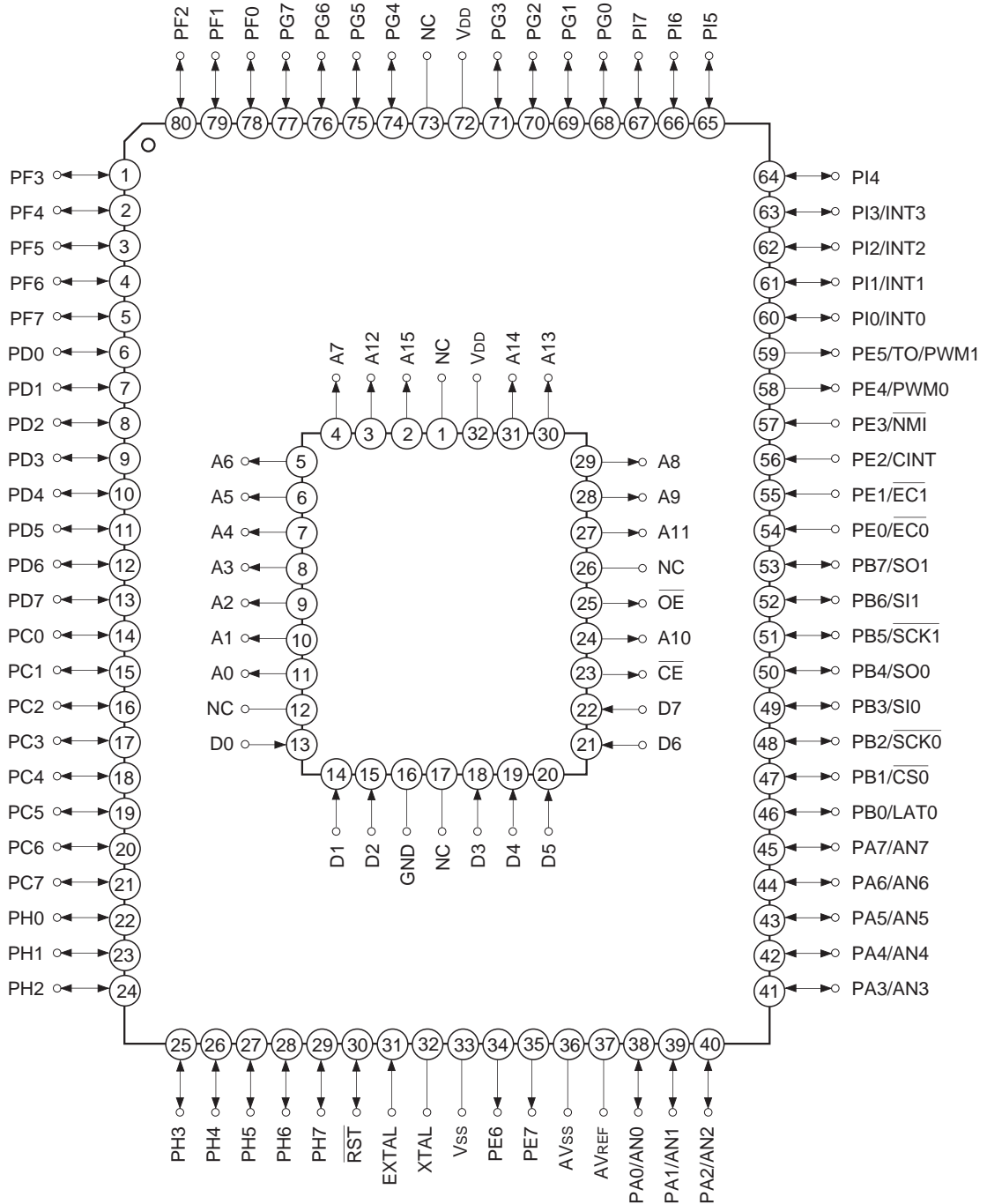


Pin Assignment in Piggyback Mode



Note) NC (pin 73) is left open.

However, this pin is used for the Flash EEPROM incorporated version (CXP845F60).

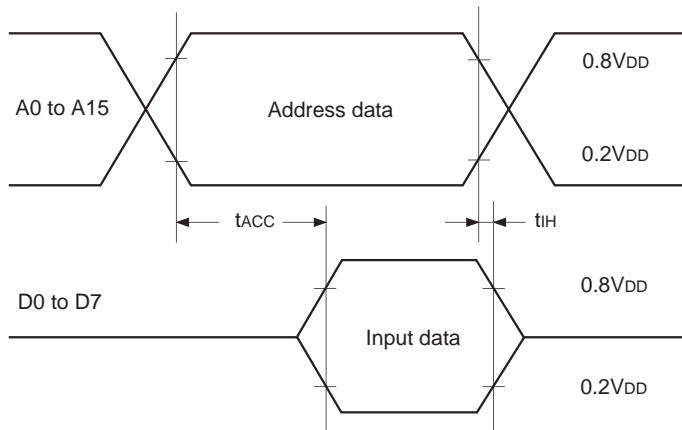
EPROM Read Timing

($T_a = -20$ to $+75^\circ\text{C}$, $V_{DD} = 3.0$ to 5.5V , $V_{SS} = 0\text{V}$ reference)

Item	Symbol	Pin	Min.	Max.	Unit
Address → data input delay time	t_{ACC}	A0 to A15 D0 to D7		60*1	ns
				40*2	
Address → data hold time	t_{IH}	A0 to A15 D0 to D7	0		ns

*1 At 20MHz operation ($V_{DD} = 4.5$ to 5.5V). The CXP27C700K is recommended.

*2 At 20MHz operation ($V_{DD} = 3.0$ to 5.5V) and 28MHz operation ($V_{DD} = 4.5$ to 5.5V). The CXP27V700K is recommended.



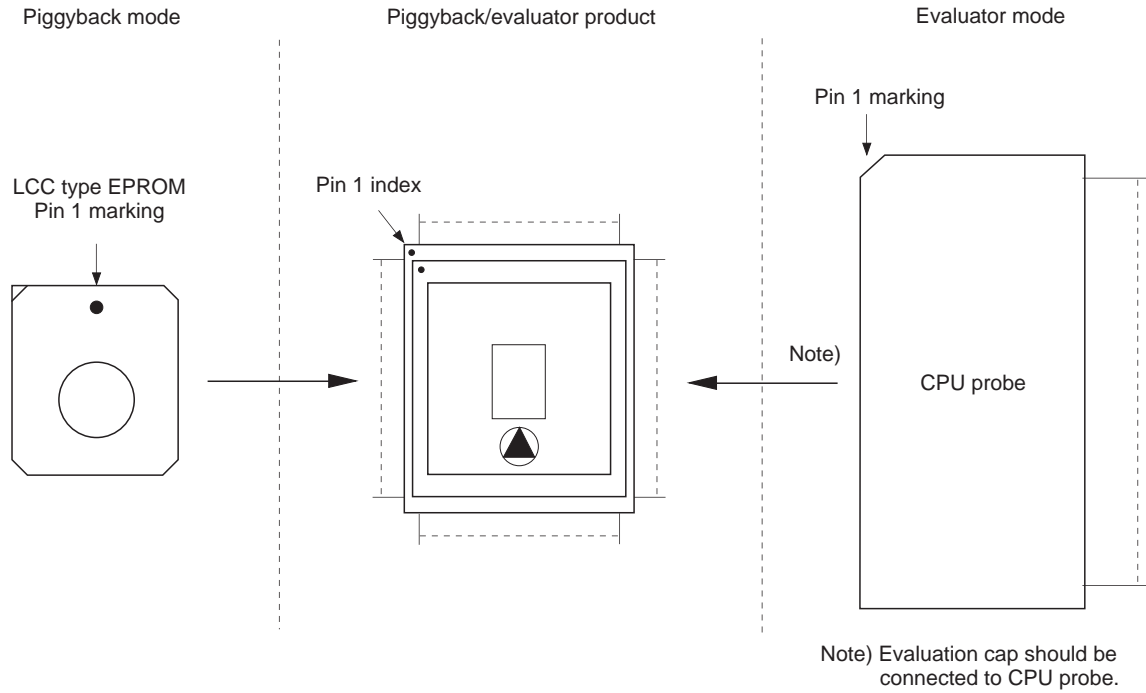
Product List

Option item	Products		
	Mask		Piggyback/evaluator
	CXP84540	CXP84548	CXP84500-U01Q CXP84500-U01R*1
Package	80-pin plastic QFP		80-pin ceramic PQFP
ROM capacity	40K bytes	48K bytes	EPROM 60K bytes
Reset pin pull-up resistor	Existent/Non-existent		Existent
Power-on reset circuit	Existent/Non-existent		Existent*2

*1 LQFP package conversion adopter used.(SEK-80Q-65MM; attached for piggyback/evaluator)

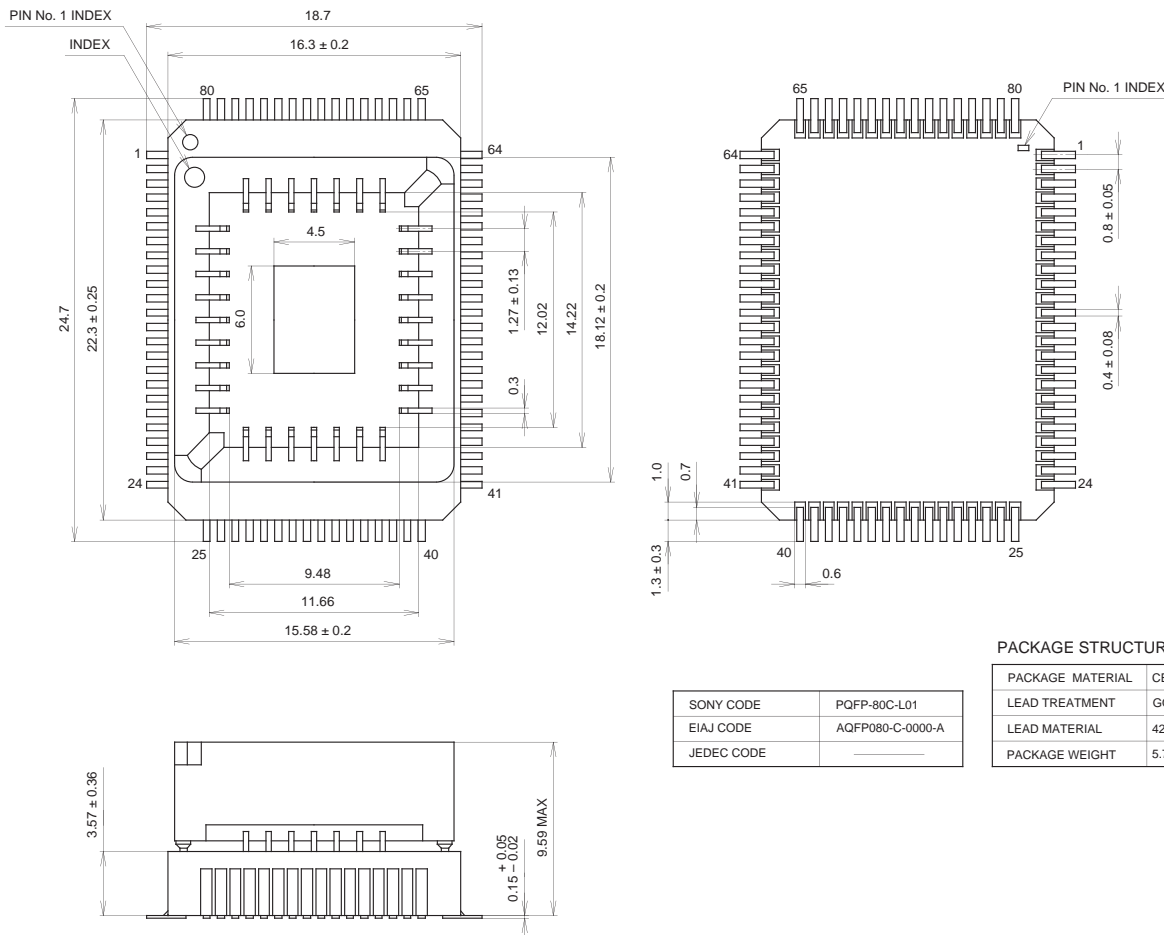
*2 Take the reset time which is more than the oscillation stabilization time by the external reset circuit because the power-on reset operation cannot be guaranteed for $V_{DD} = 3.0$ to 4.5V .

Piggyback mode/evaluator mode can be switched as shown below.



Package Outline Unit: mm

80PIN PQFP (CERAMIC)





LittleDiode supplies new, hard to find or obsolete electronic components and semiconductors all over the world.

With over two million different components listed you are sure to find the part you need.

Feel free to visit us today at our online store:

LittleDiode.com

Looking forward to providing you with the best possible service.