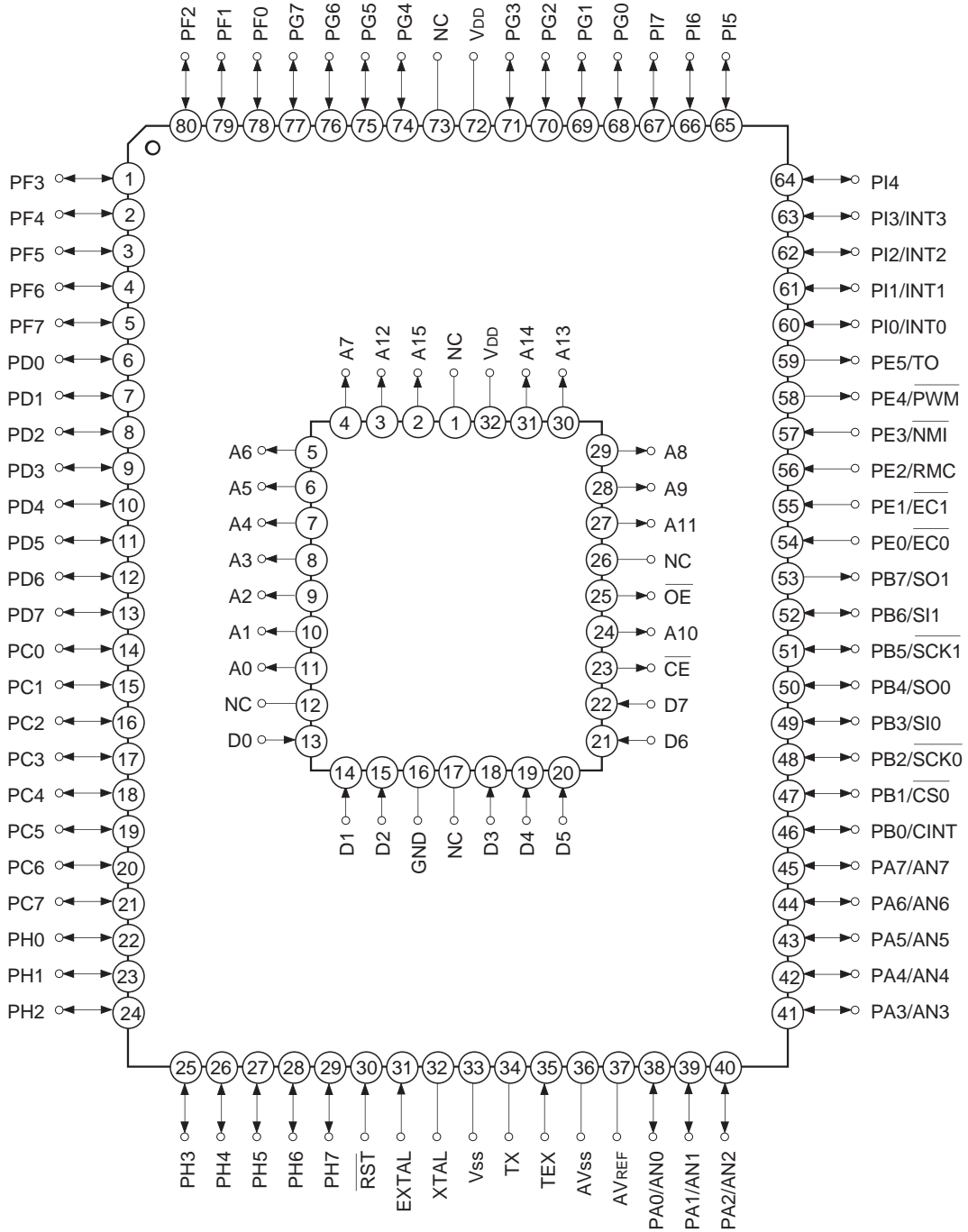
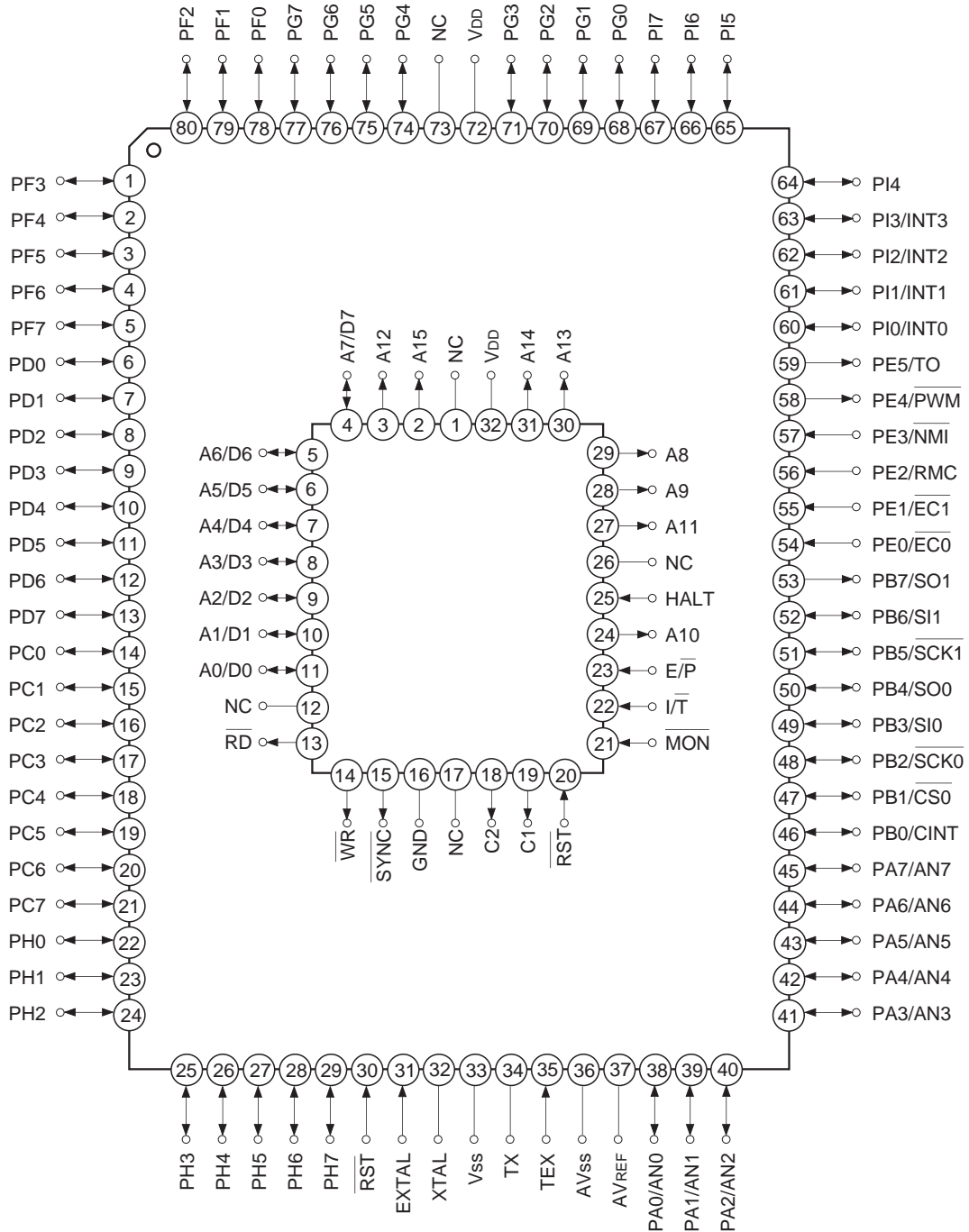


Pin Configuration in Piggyback Mode



Note NC (Pin 73) is always connected to V_{DD}.

Pin Configuration in Evaluator Mode

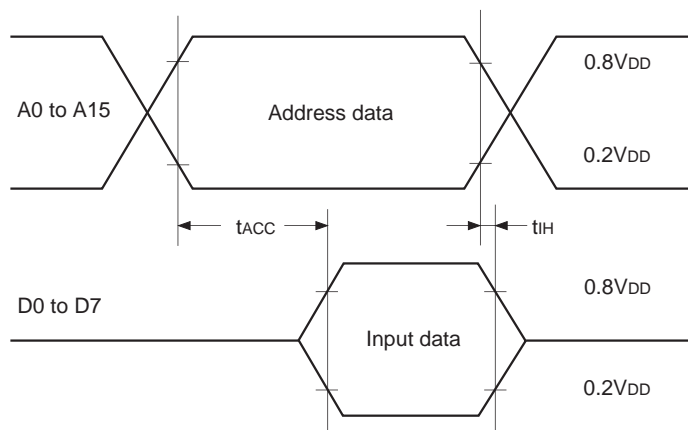


Note) NC (Pin 73) is always connected to V_{DD}.

EPROM Read Timing

($T_a = -20$ to $+75^\circ\text{C}$, $V_{cc} = 4.5$ to 5.5V , $V_{ss} = 0\text{V}$ reference)

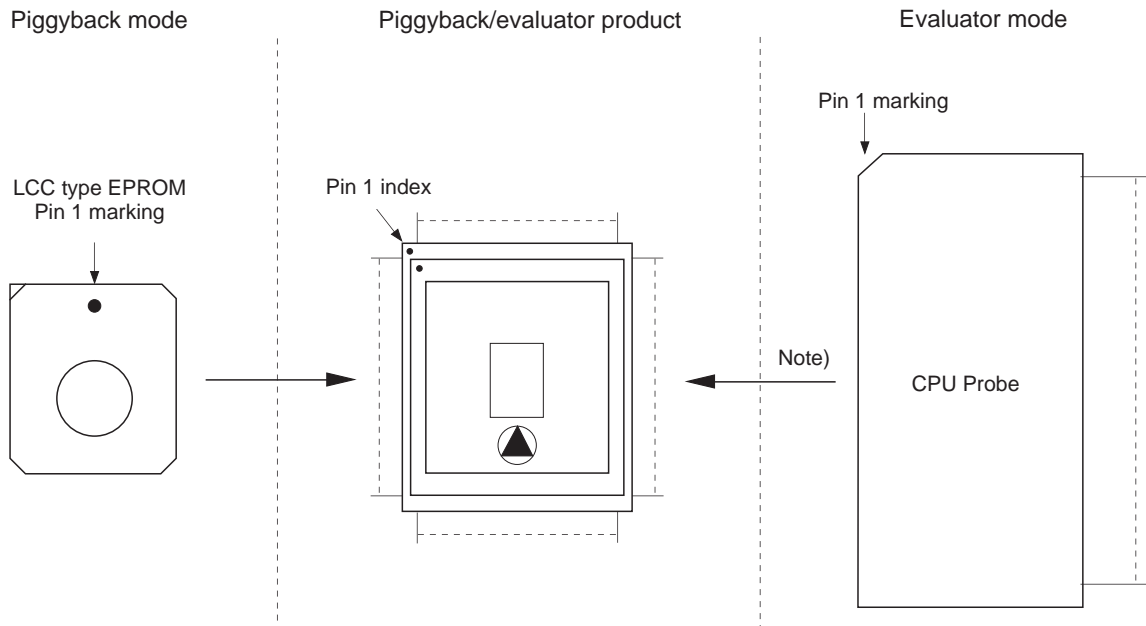
Item	Symbol	Pins	Min.	Max.	Unit
Address → Data Input delay time	t_{ACC}	A0 to A15 D0 to D7		120	ns
Address → Data Hold time	t_{IH}	A0 to A15 D0 to D7	0		ns



Products List

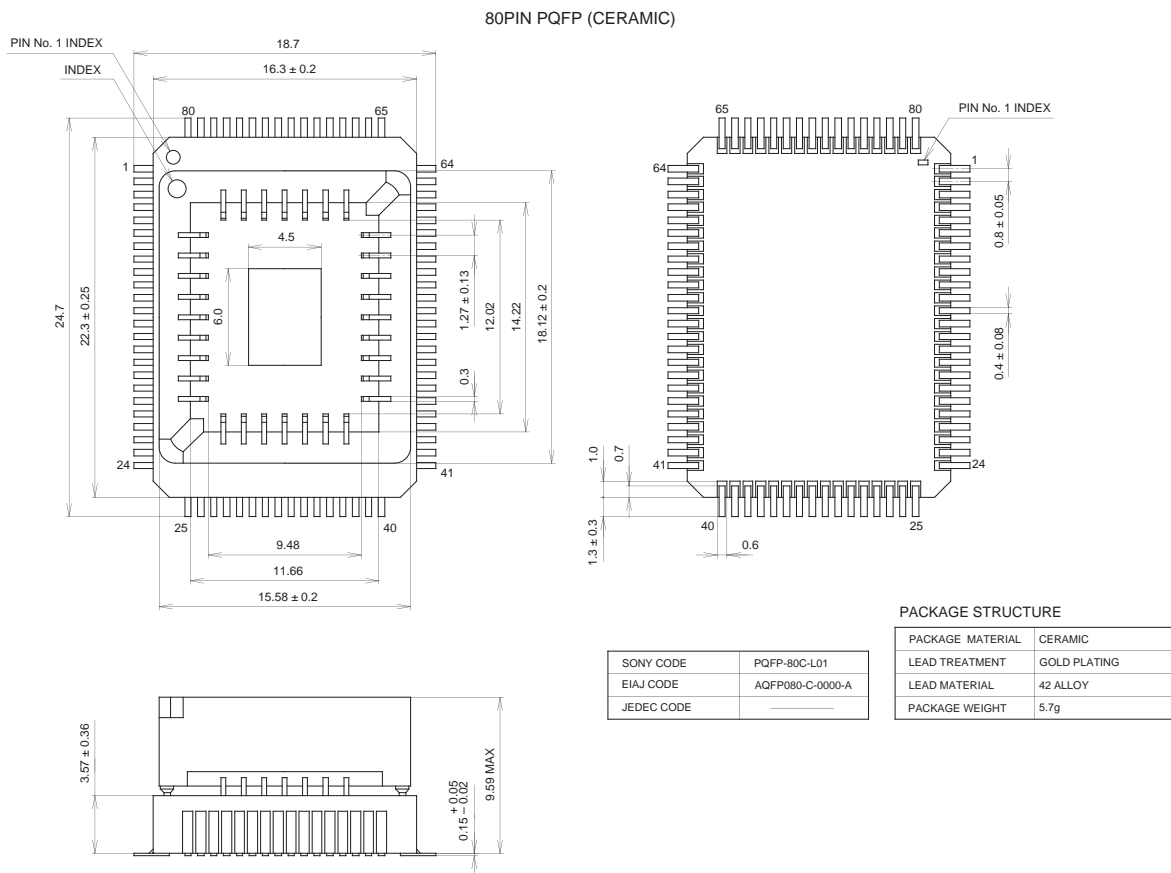
Option item	Products		
	Mask		Piggyback/evaluator
	CXP84120	CXP84124	CXP84100-U01Q
Package	80-pin plastic QFP		80-pin ceramic PQFP
ROM capacitance	20K bytes	24K bytes	24K bytes
Pull-up resistance for reset pin	Existent/Non-existent		Existent
Power-on reset circuit	Non-existent		Non-existent

Piggyback mode/evaluator mode can be switched as shown below.



Note) Evaluation cap should be connected to CPU probe.

Package Outline Unit: mm





LittleDiode supplies new, hard to find or obsolete electronic components and semiconductors all over the world.

With over two million different components listed you are sure to find the part you need.

Feel free to visit us today at our online store:

LittleDiode.com

Looking forward to providing you with the best possible service.