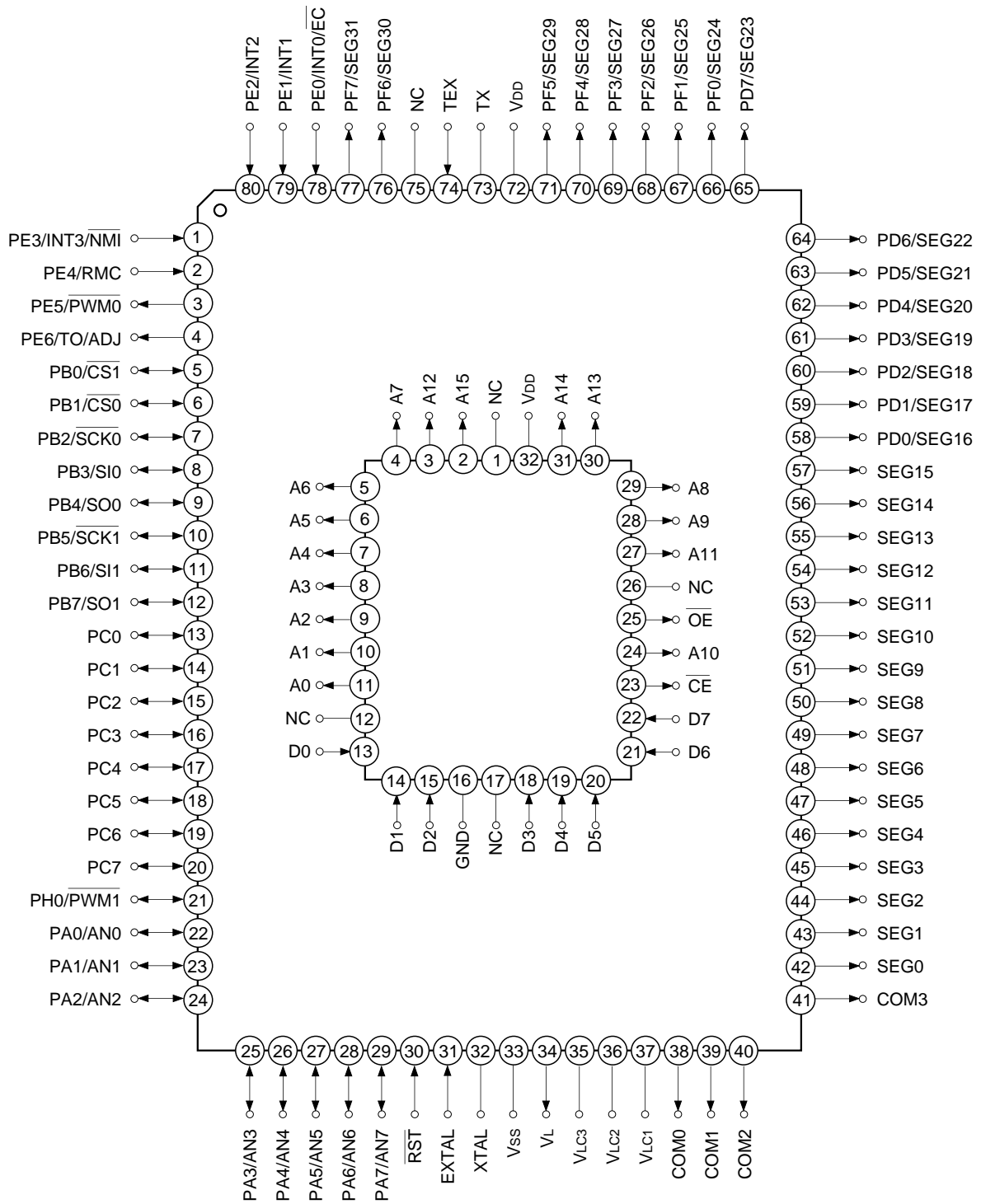
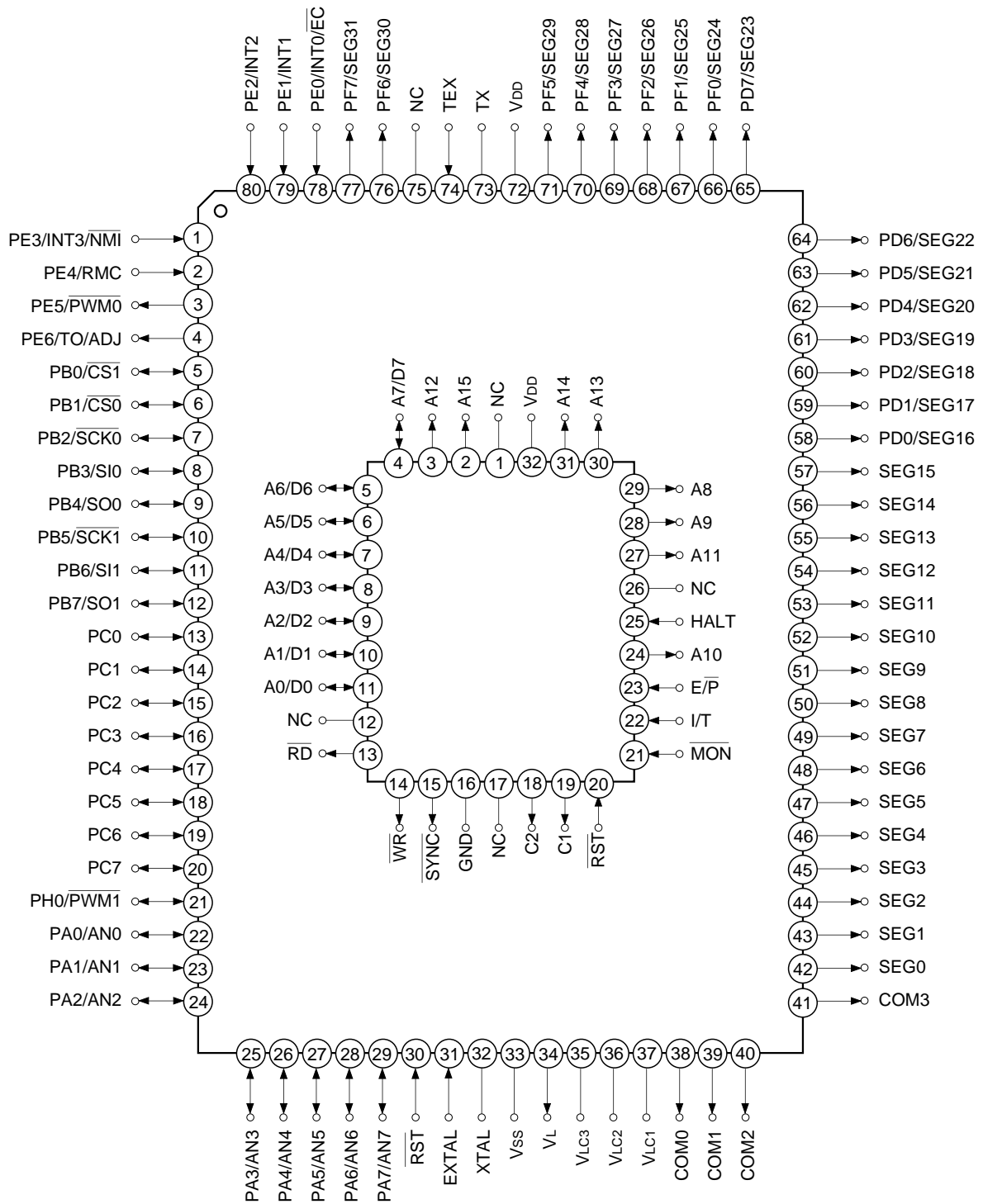


Pin Assignment in Piggyback Mode



Note) NC (Pin 75) is always connected to V_{DD}.

Pin Assignment in Evaluator Mode

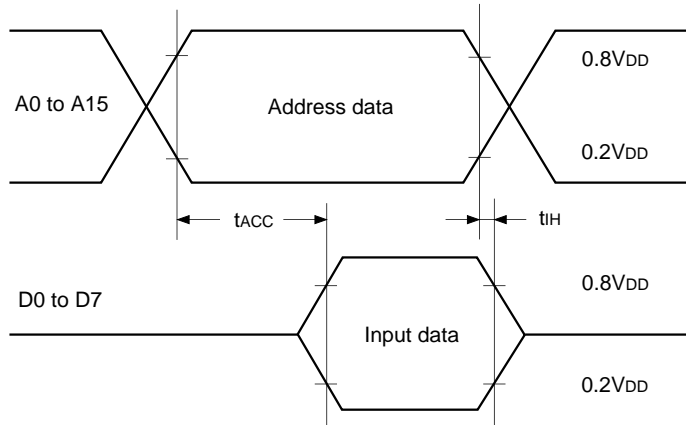


Note) NC (Pin 75) is always connected to VDD.

EPROM Read Timing

($T_a = -20$ to $+75^\circ\text{C}$, $V_{DD} = 4.5$ to 5.5V , $V_{SS} = 0\text{V}$ reference)

Item	Symbol	Pin	Min.	Max.	Unit
Address → data Input delay time	t_{ACC}	A0 to A15 D0 to D7		120	ns
Address → data Hold time	t_{IH}	A0 to A15 D0 to D7	0		ns



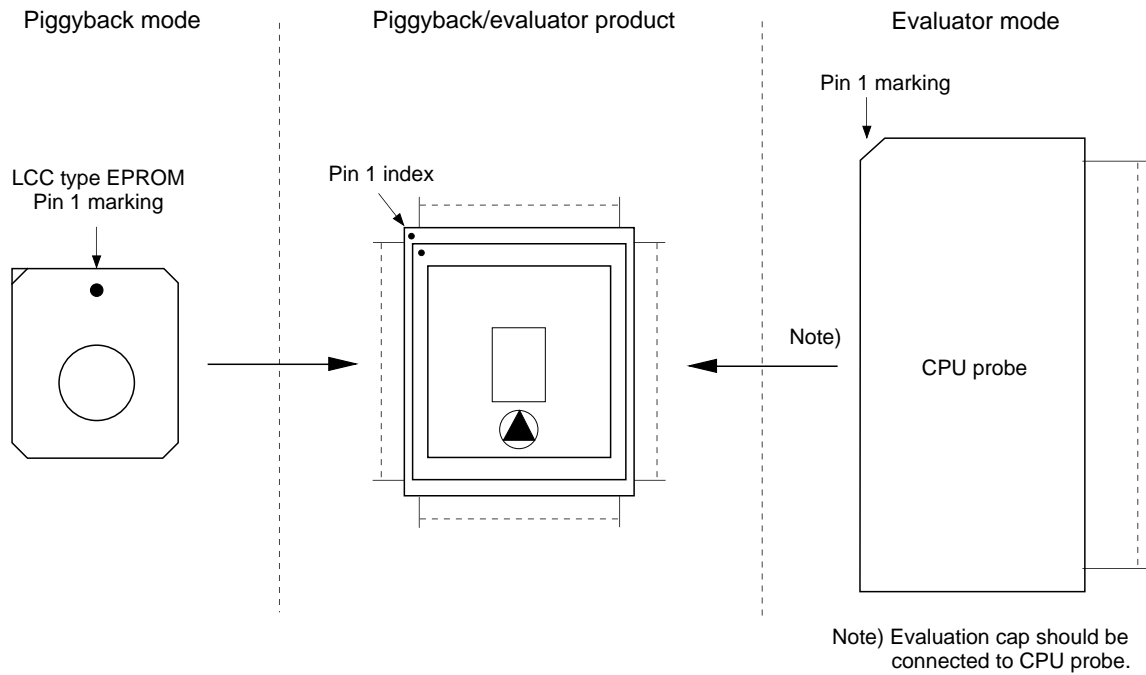
Products List

Option item	Products					
	Mask product				Piggyback/evaluator product	
	CXP83412	CXP83416	CXP83413	CXP83417	CXP83400-U01Q/R*1	CXP83401-U01Q*2
Package	80-pin plastic QFP/LQFP		0.65mm pitch 80-pin plastic QFP		80-pin ceramic PQFP	
ROM capacity	12K bytes	16K bytes	12K bytes	16K bytes	EPROM 16K bytes	
Pull-up resistor for reset pin	Existent/Non-existent				Existent	

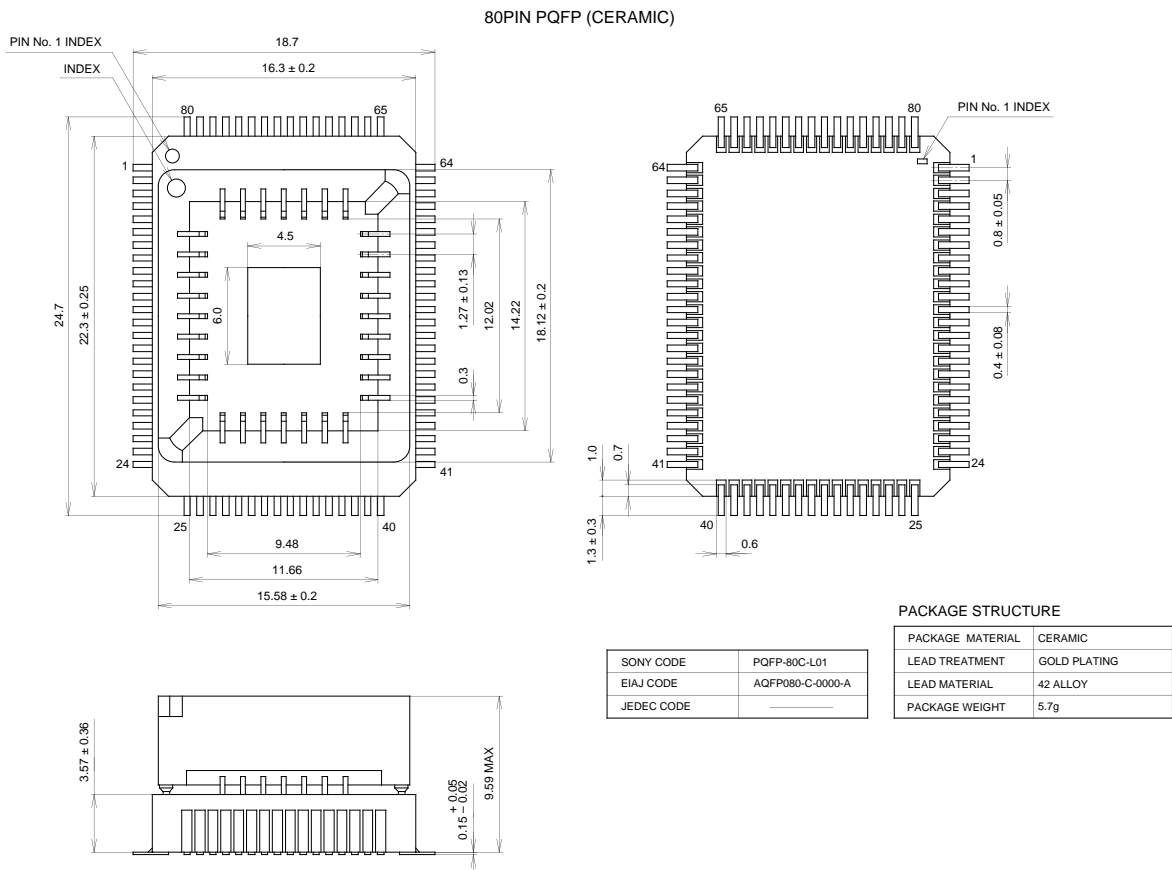
*1 Uses LQFP package conversion adaptor (SEK-80Q-80LQ, piggyback/evaluator attached).

*2 Uses 0.65mm pitch QFP package conversion adaptor (SEK-80Q-65MM, piggyback/evaluator attached).

Piggyback mode/evaluator mode can be switched as shown below.



Package Outline Unit: mm





LittleDiode supplies new, hard to find or obsolete electronic components and semiconductors all over the world.

With over two million different components listed you are sure to find the part you need.

Feel free to visit us today at our online store:

LittleDiode.com

Looking forward to providing you with the best possible service.