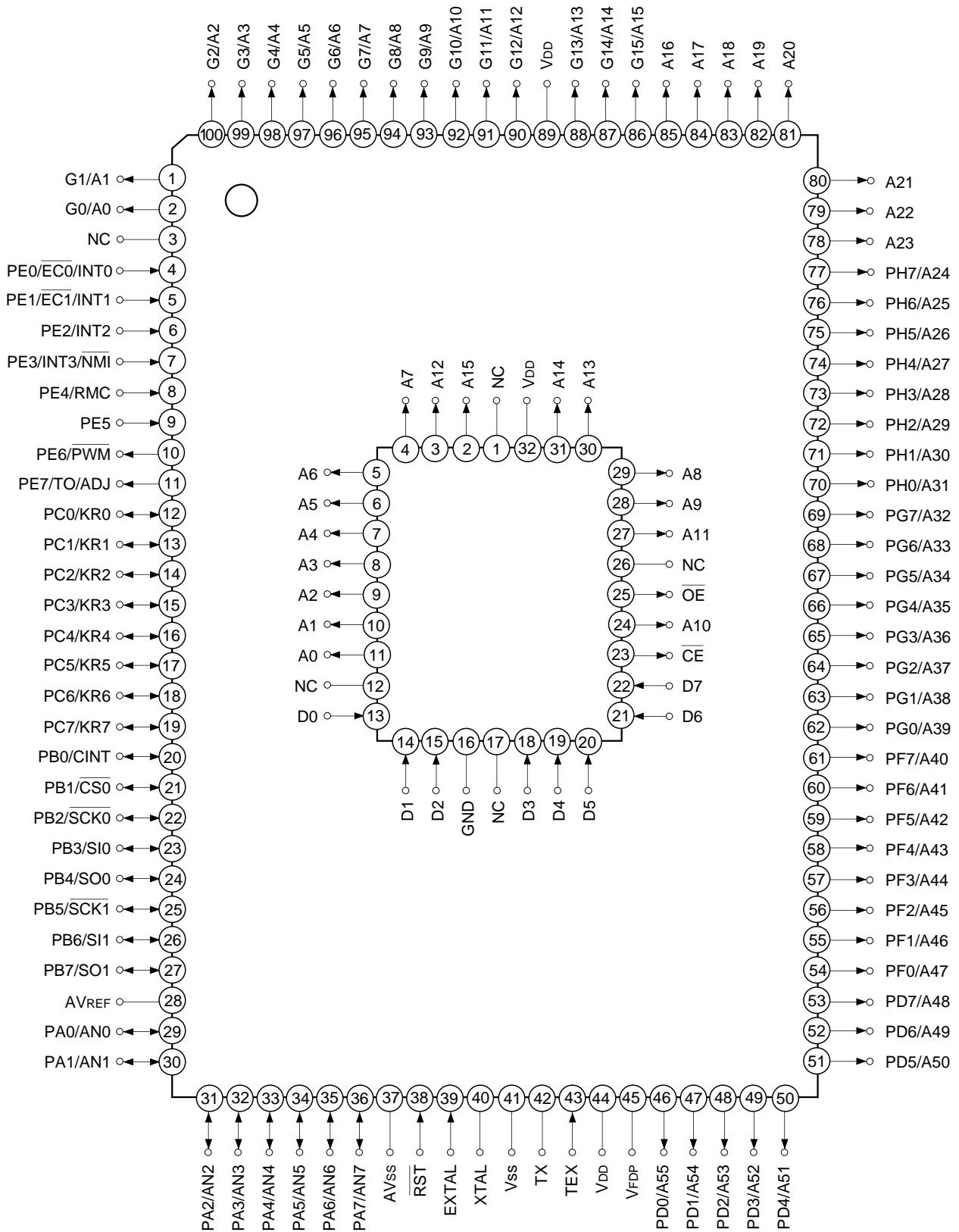
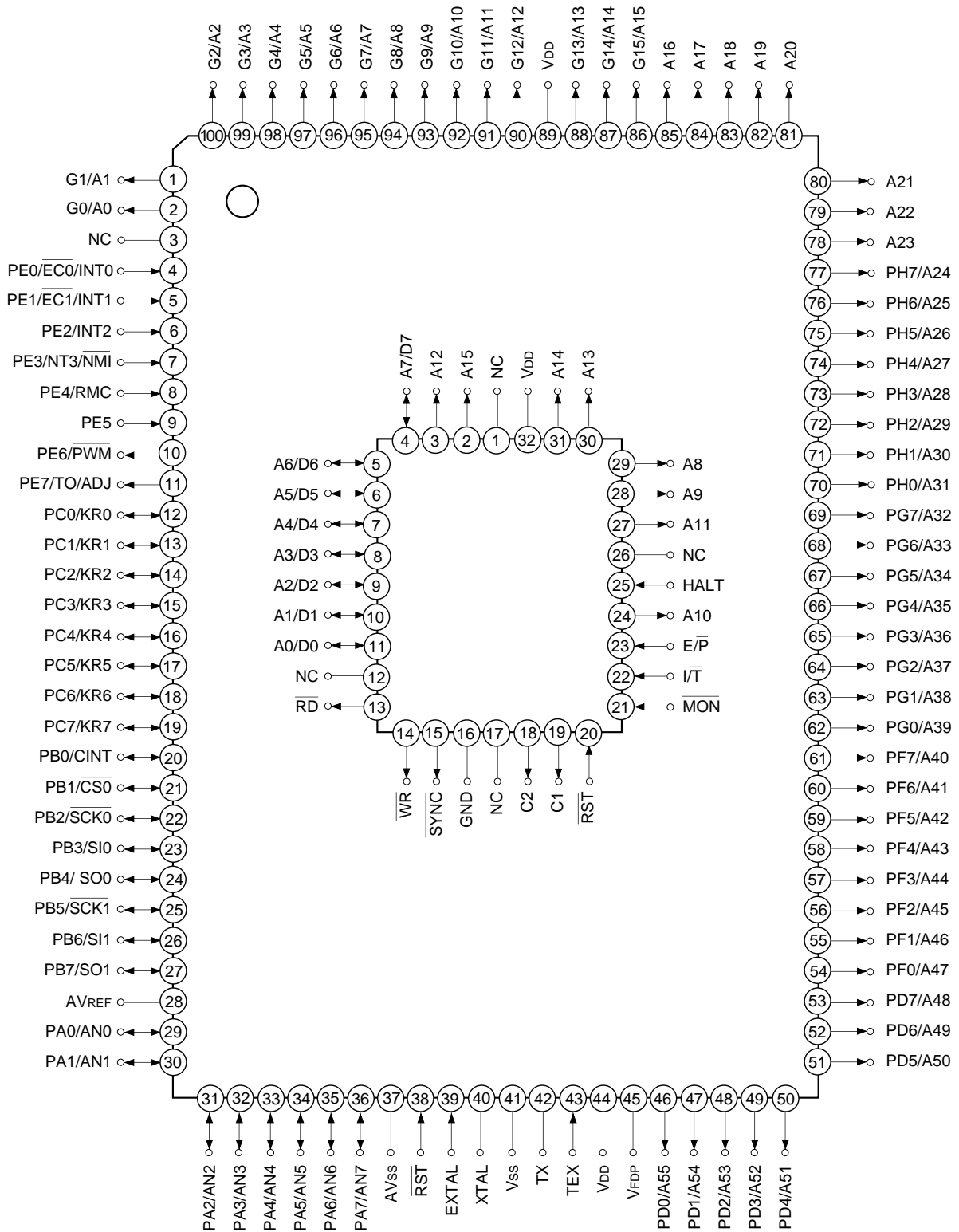


Pin Configuration in Piggyback Mode



- Note)**
1. NC (Pin 3) is always connected to V_{DD}.
 2. V_{DD} (Pins 44 and 89) are both connected to V_{DD}.

Pin Configuration in Evaluator Mode

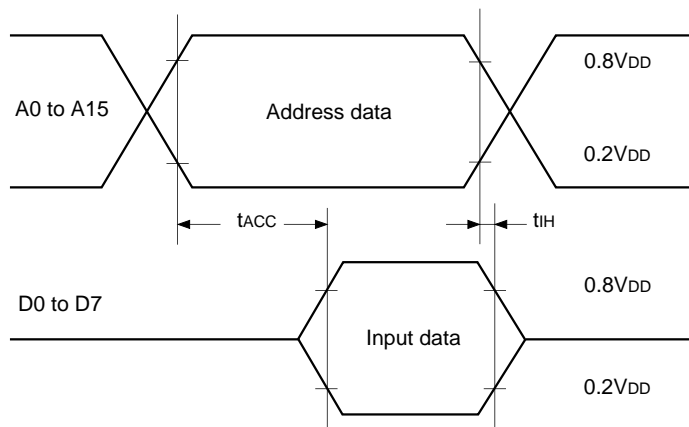


- Note)**
1. NC (Pin 3) is always connected to V_{DD}.
 2. V_{DD} (Pins 44 and 89) are both connected to V_{DD}.

EPROM Read Timing

($T_a = -20$ to $+75^\circ\text{C}$, $V_{cc} = 4.5$ to 5.5V , $V_{ss} = 0\text{V}$ reference)

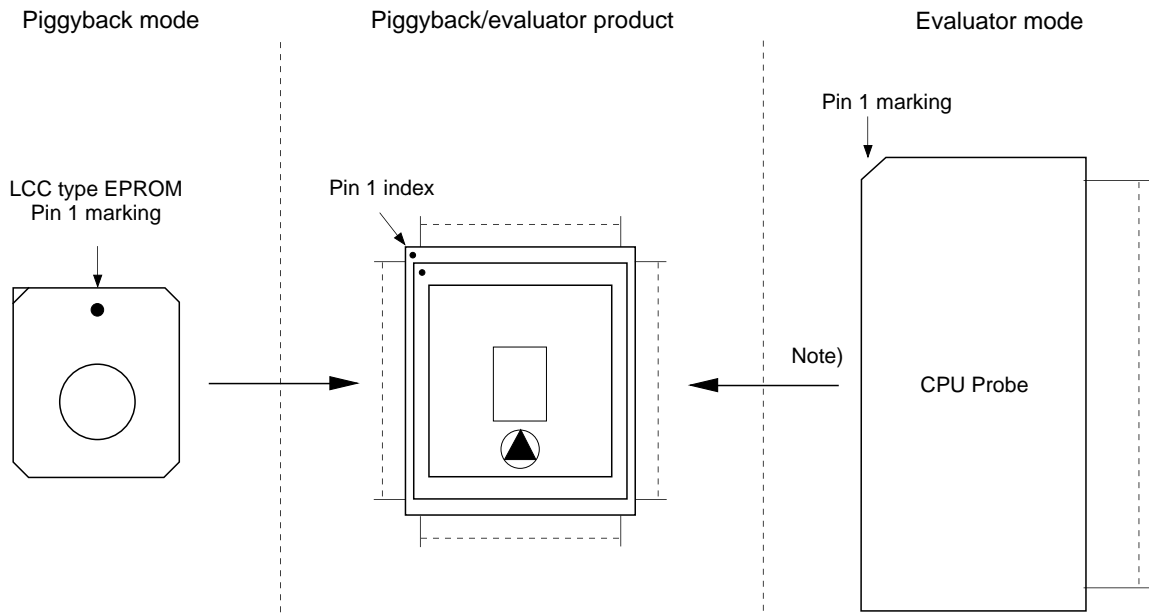
Item	Symbol	Pins	Min.	Max.	Unit
Address → Data input delay time	t_{ACC}	A0 to A15 D0 to D7		120	ns
Address → Data hold time	t_{IH}	A0 to A15 D0 to D7	0		ns



Products List

Option item	Products				
	Mask				Piggyback/evaluator
	CXP82832	CXP82840	CXP82852	CXP82860	CXP82800-U01Q
Package	100-pin plastic QFP				100-pin ceramic PQFP
ROM capacitance	32K bytes	40K bytes	52K bytes	60K bytes	EPROM 60K bytes
Pull-up resistance for reset pin	Existent/Non-existent				Existent
Pull-down resistance for high voltage drive pin	Existent/Non-existent				Existent: G0/A0 to A23 Non-existent: PD0/A55 to PH7/A24

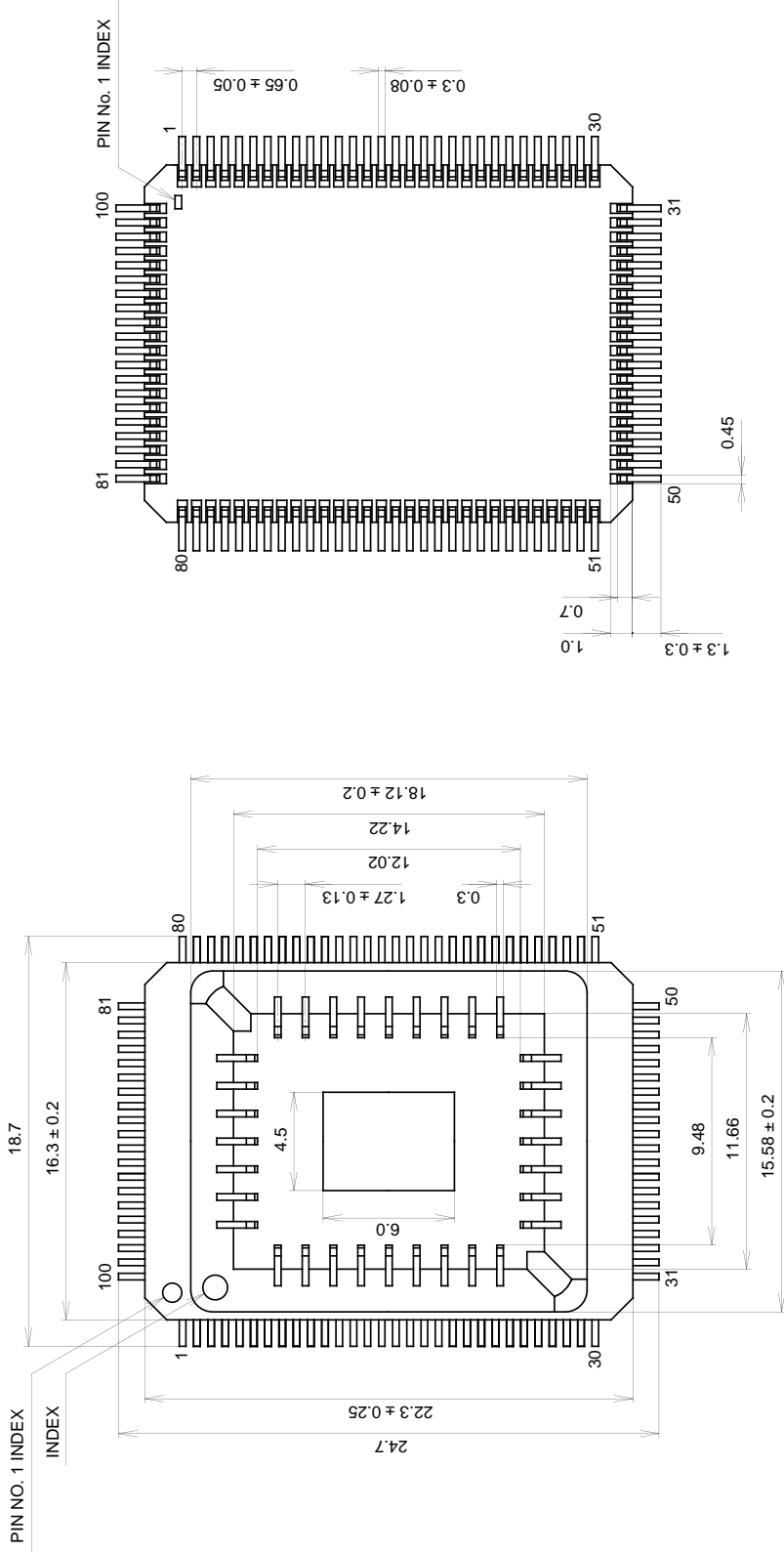
Piggyback mode/evaluator mode can be switched as shown below.



Note) Evaluation cap should be connected to CPU probe.

Package Outline Unit: mm

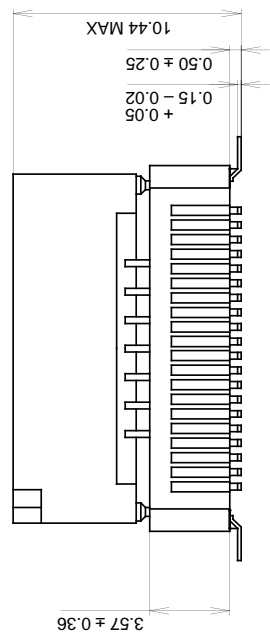
100PIN PQFP (CERAMIC)



SONY CODE	PQFP-100C-L01
EIA/J CODE	AQFP100-C-0000-A
JEDEC CODE	

PACKAGE STRUCTURE

PACKAGE MATERIAL	CERAMIC
LEAD TREATMENT	GOLD PLATING
LEAD MATERIAL	42 ALLOY
PACKAGE WEIGHT	5.7g





LittleDiode supplies new, hard to find or obsolete electronic components and semiconductors all over the world.

With over two million different components listed you are sure to find the part you need.

Feel free to visit us today at our online store:

LittleDiode.com

Looking forward to providing you with the best possible service.