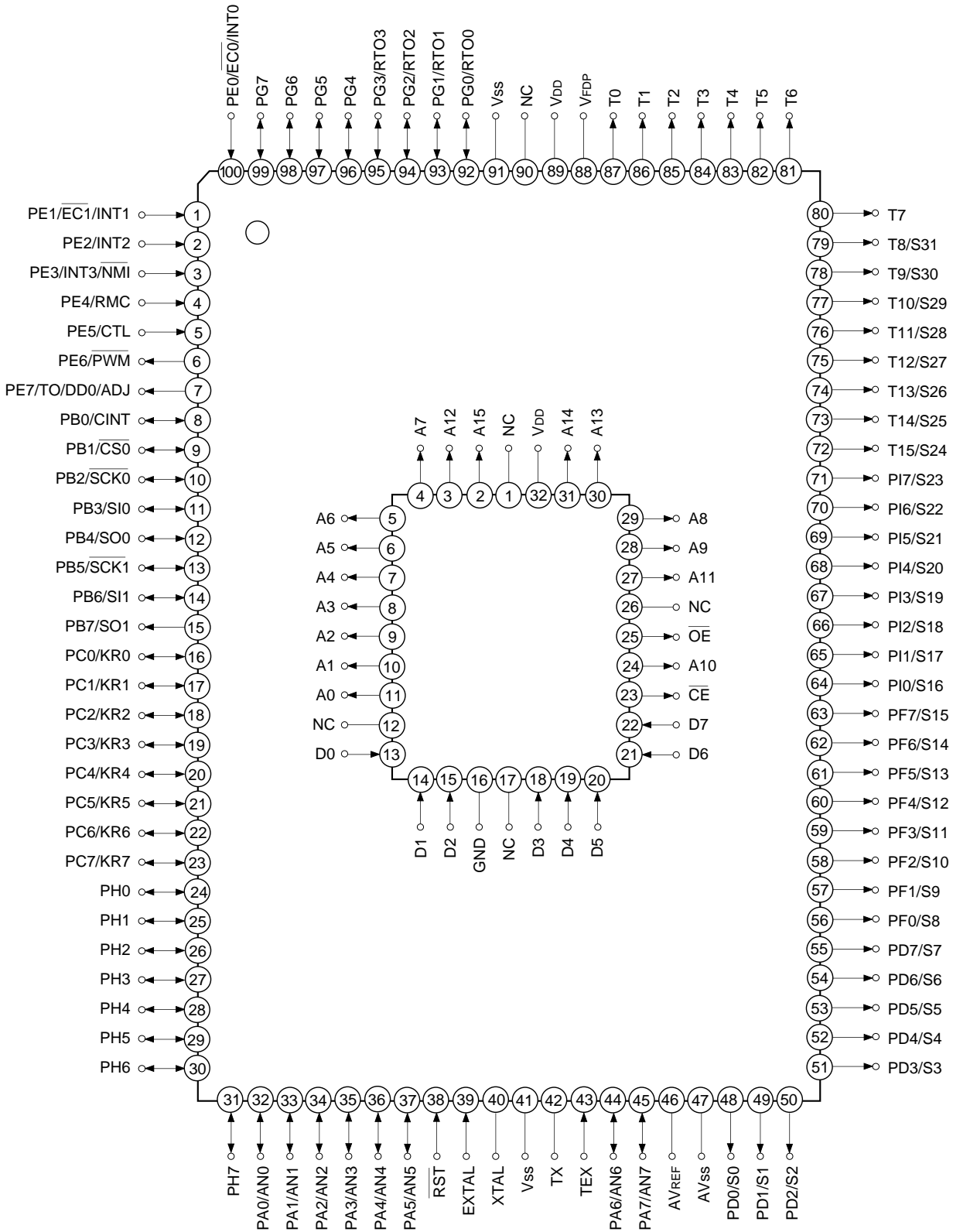
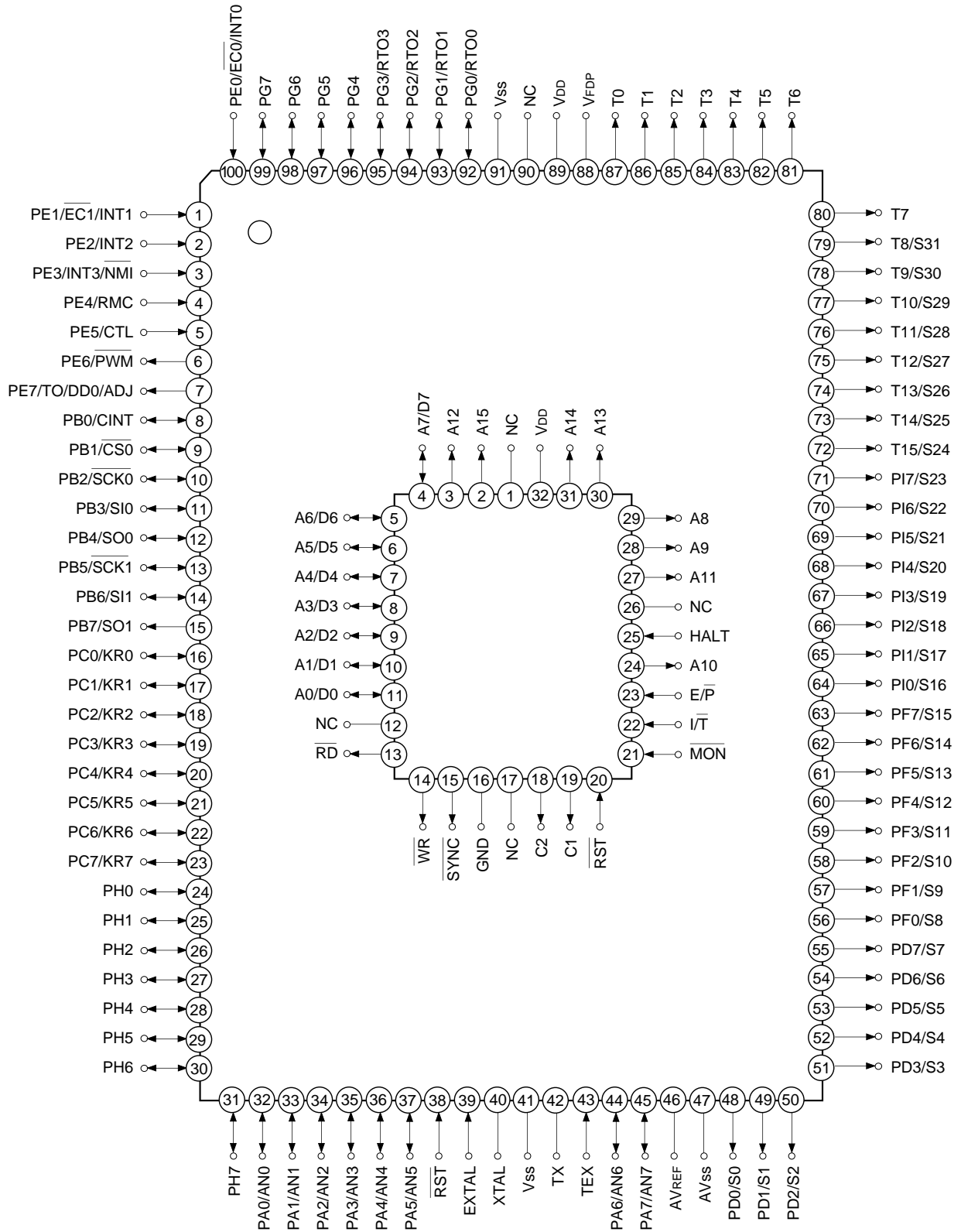


Pin Configuration in Piggyback Mode



- Note)** 1. NC (Pin 90) is always connected to V_{DD}.
 2. V_{ss} (Pins 41 and 91) are both connected to GND.

Pin Configuration in Evaluator Mode

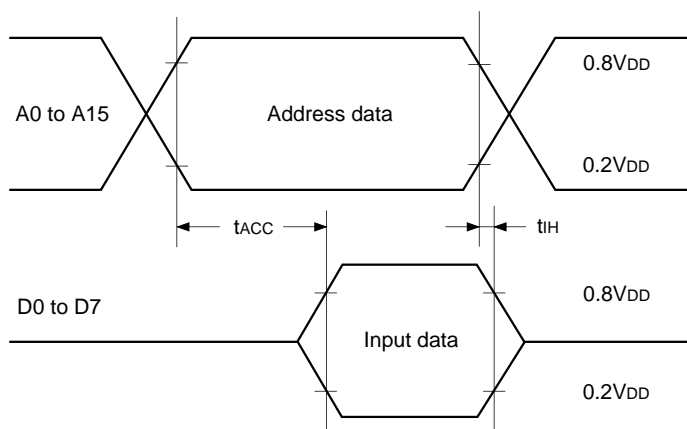


Note) 1. NC (Pin 90) is always connected to VDD.
 2. Vss (Pins 41 and 91) are both connected to GND.

EPROM Read Timing

($T_a = -20$ to $+75^\circ\text{C}$, $V_{cc} = 4.5$ to 5.5V , $V_{ss} = 0\text{V}$ reference)

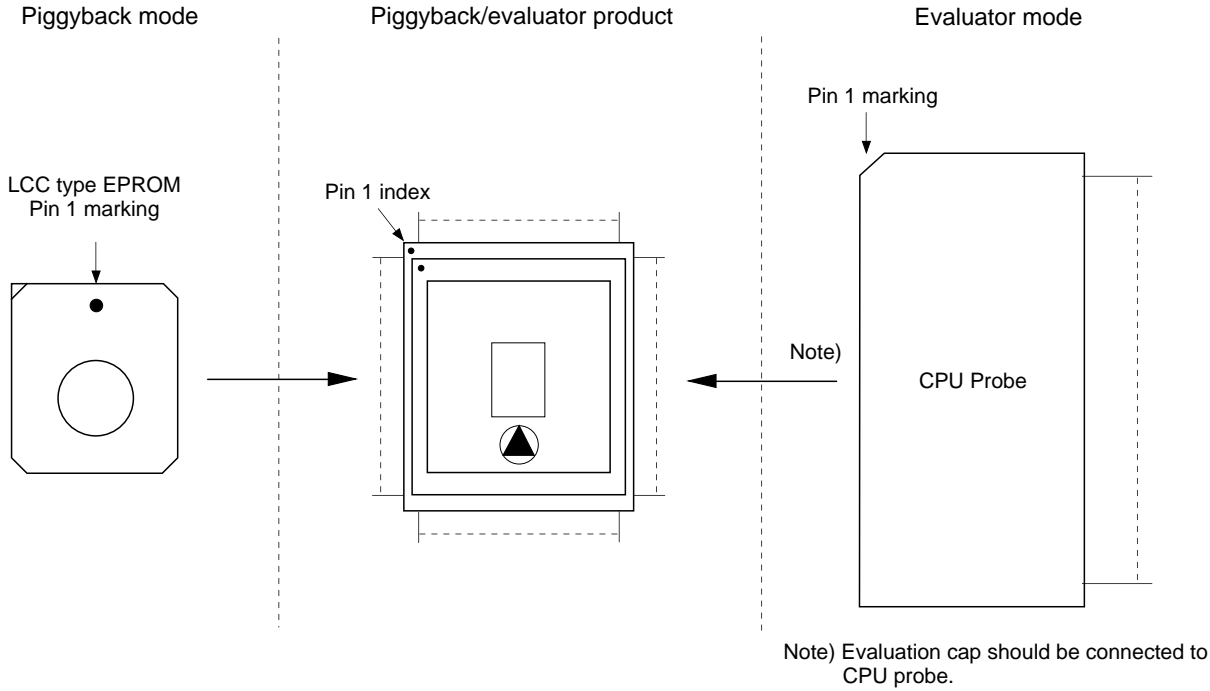
Item	Symbol	Pins	Min.	Max.	Unit
Address → Data Input delay time	t_{ACC}	A0 to A15 D0 to D7		120	ns
Address → Data Hold time	t_{IH}	A0 to A15 D0 to D7	0		ns



Products List

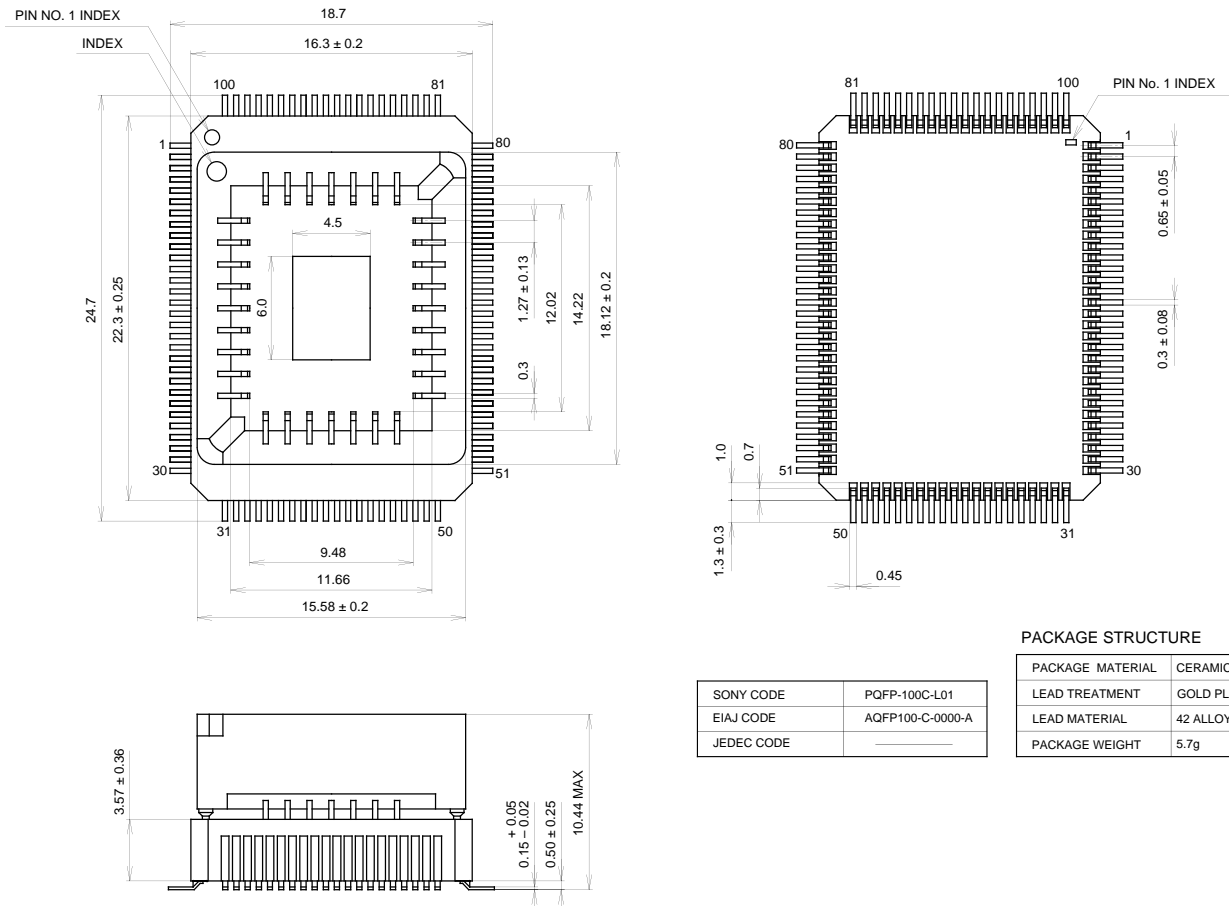
Option item	Products		
	Mask type		Piggyback/evaluator type
	CXP82432A	CXP82440A	CXP82400A-U01Q
Package	100-pin plastic QFP		100-pin ceramic PQFP
ROM capacitance	32K bytes	40K bytes	EPROM 40K bytes
Pull-up resistance for reset pin	Existent/Non-existent		Existent
Pull-down resistance for high voltage drive pin	Existent/Non-existent		Existent: T0 to T15/S24 Non-existent: PD0/S0 to PI7/S23

Piggyback mode/evaluator mode can be switched as shown below.



Package Outline Unit: mm

100PIN PQFP (CERAMIC)





LittleDiode supplies new, hard to find or obsolete electronic components and semiconductors all over the world.

With over two million different components listed you are sure to find the part you need.

Feel free to visit us today at our online store:

LittleDiode.com

Looking forward to providing you with the best possible service.