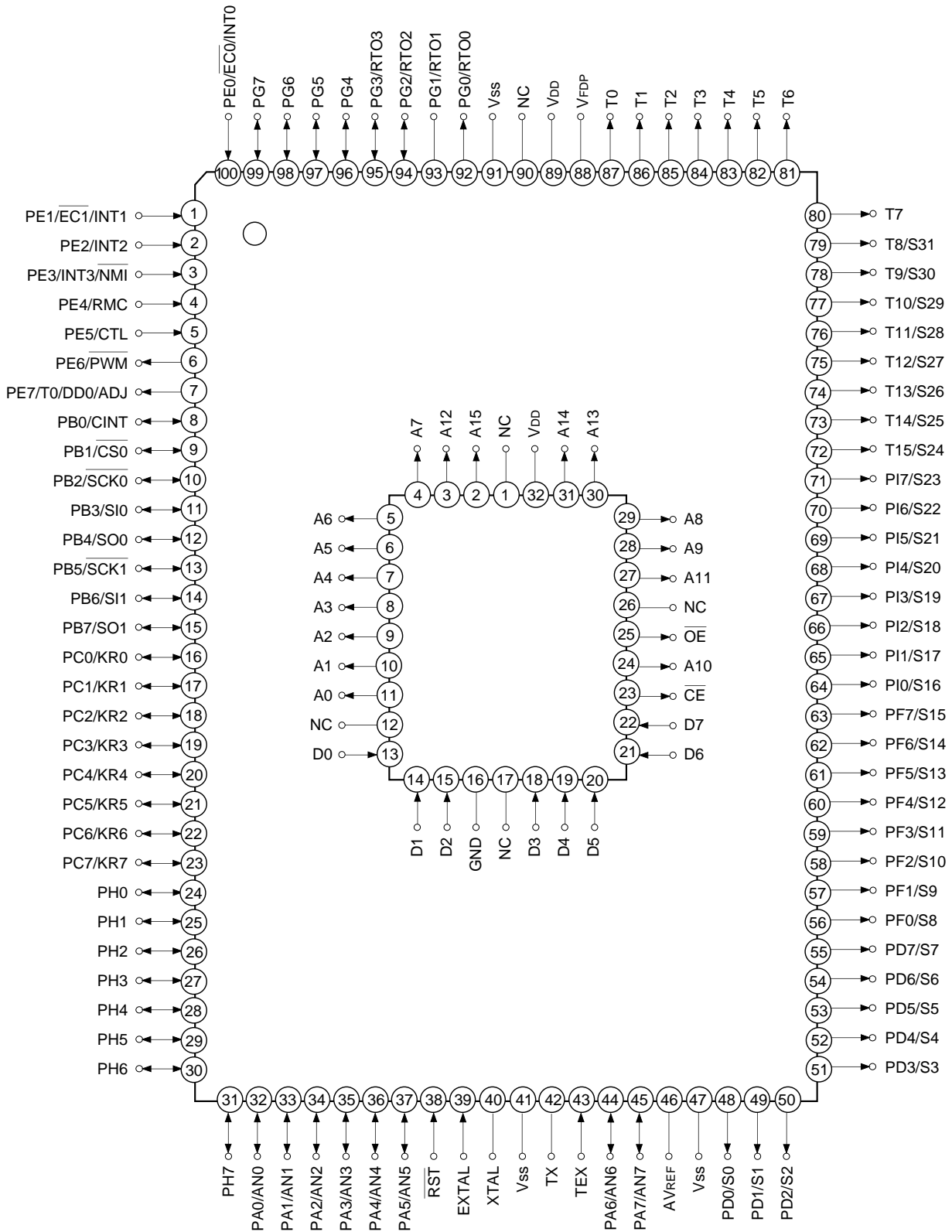




Pin Assignment in Piggyback Mode



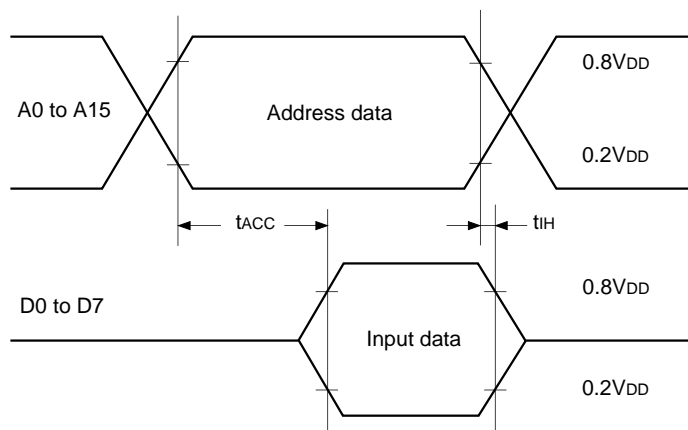
- Note)**
1. NC (Pin 90) is always connected to V<sub>DD</sub>.
  2. V<sub>ss</sub> (Pins 41 and 91) are both connected to GND.



**EPROM Read Timing**

( $T_a = -20$  to  $+75^\circ\text{C}$ ,  $V_{cc} = 4.5$  to  $5.5\text{V}$ ,  $V_{ss} = 0\text{V}$  reference)

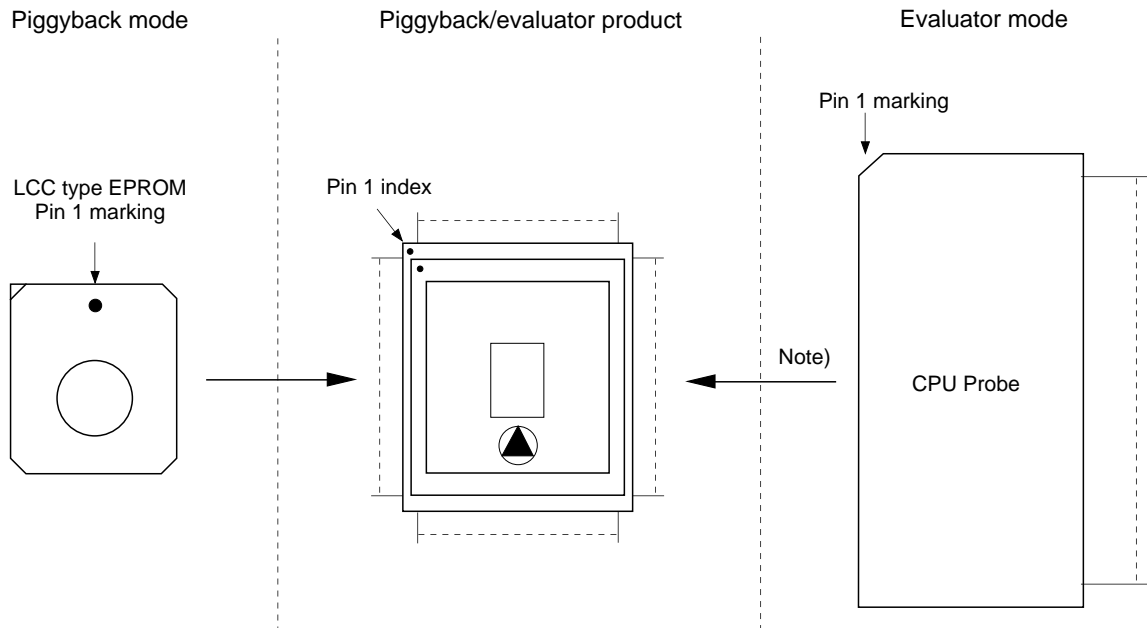
Item	Symbol	Pins	Min.	Max.	Unit
Address → Data Input delay time	$t_{ACC}$	A0 to A15 D0 to D7		120	ns
Address → Data Hold time	$t_{IH}$	A0 to A15 D0 to D7	0		ns



**Products List**

Option item	Products		
	Mask		Piggyback/evaluator
	CXP82220	CXP82224	CXP82200-U01Q
Package	100-pin plastic QFP		100-pin ceramic PQFP
ROM capacitance	20K bytes	24K bytes	EPROM 24K bytes
Pull-up resistance for reset pin	Existent/Non-existent		Existent
Power-on reset circuit	Non-existent		Non-existent
Pull-down resistance for high voltage drive pin	Existent/Non-existent		Only port for display

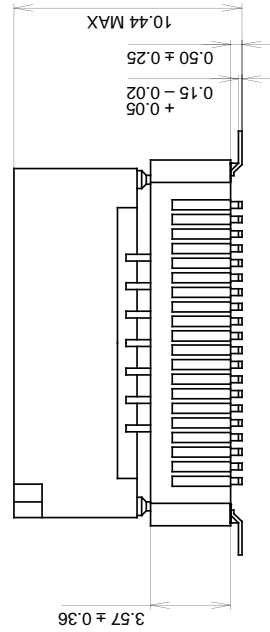
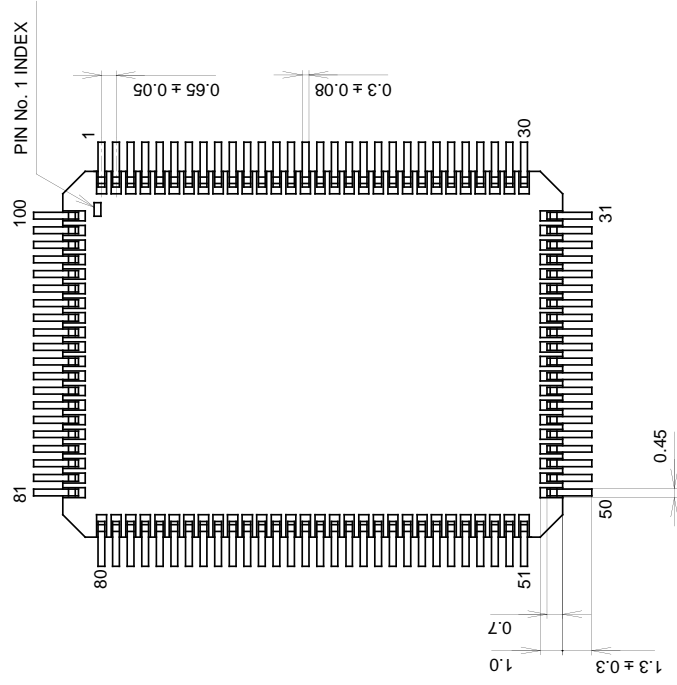
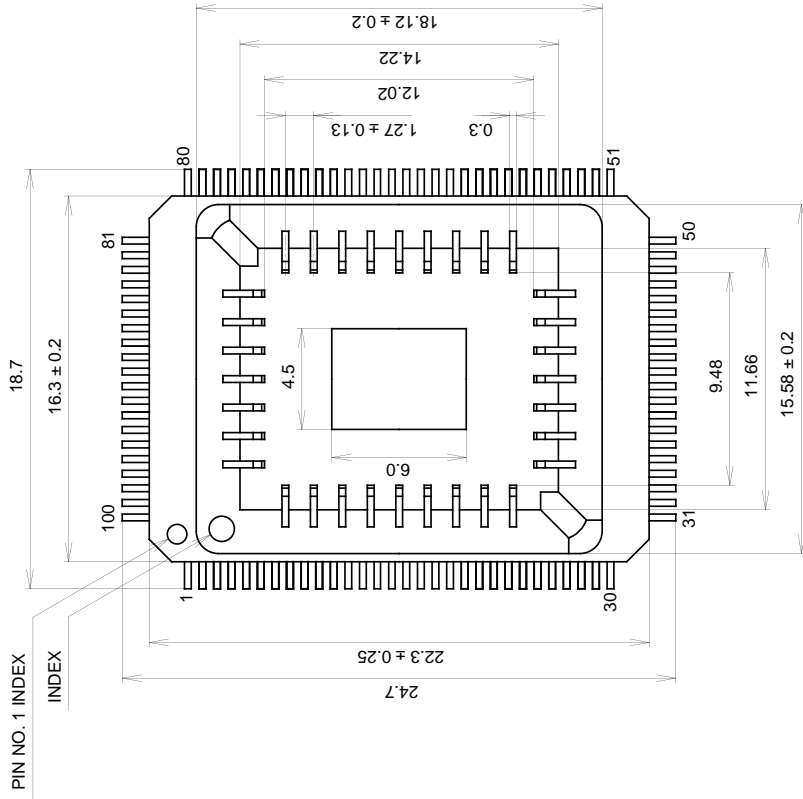
Piggyback mode/evaluator mode can be switched as shown below.



Note) Evaluation cap should be connected to CPU probe.

Package Outline Unit: mm

100PIN PQFP (CERAMIC)



PACKAGE STRUCTURE

PACKAGE MATERIAL	CERAMIC
LEAD TREATMENT	GOLD PLATING
LEAD MATERIAL	42 ALLOY
PACKAGE WEIGHT	5.7g

SONY CODE	PQFP-100C-L01
EIAJ CODE	AGFP100-C-0000-A
JEDEC CODE	



LittleDiode supplies new, hard to find or obsolete electronic components and semiconductors all over the world.

With over two million different components listed you are sure to find the part you need.

Feel free to visit us today at our online store:

[LittleDiode.com](http://LittleDiode.com)

Looking forward to providing you with the best possible service.