

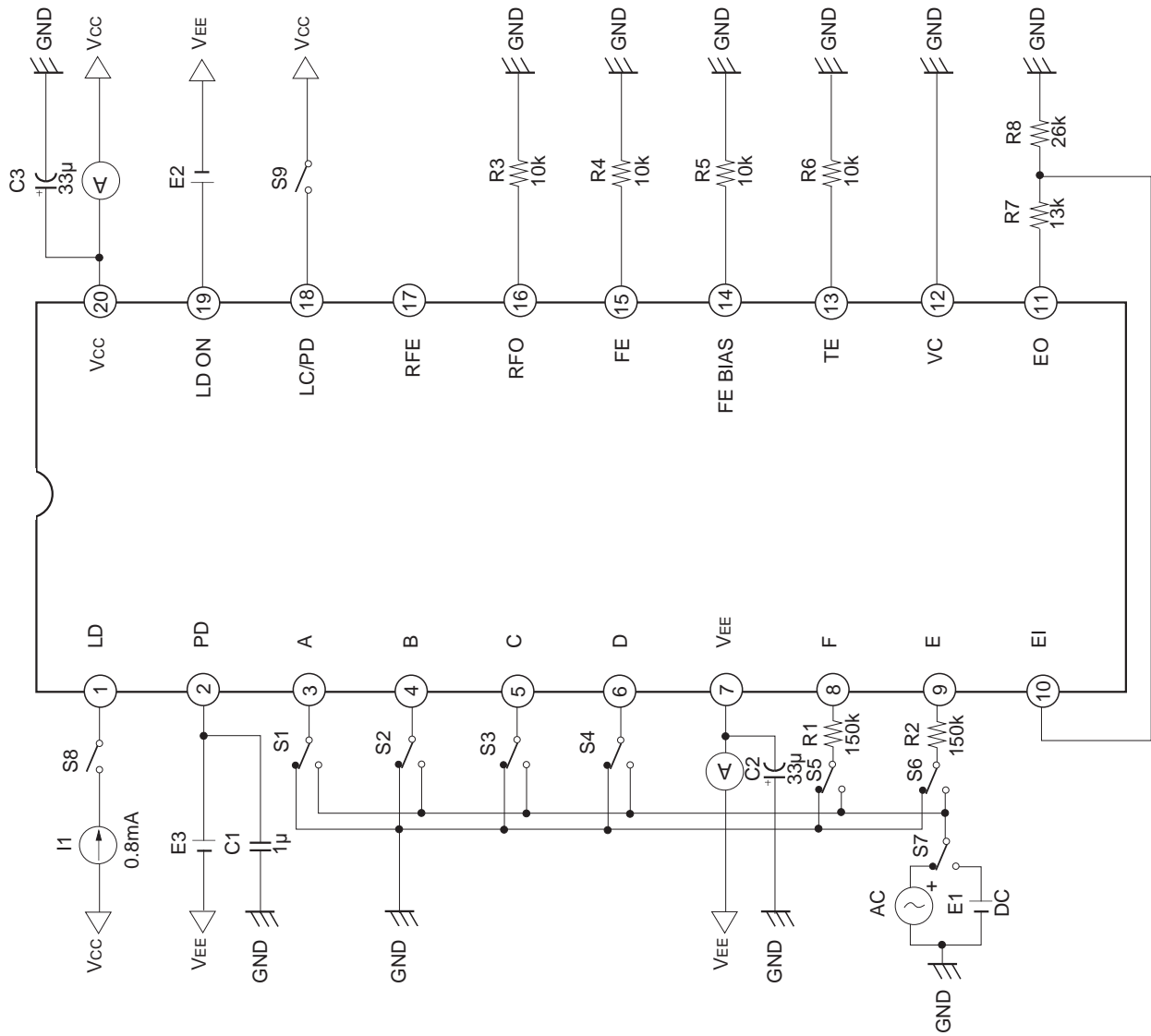
Pin Description

Pin No.	Symbol	I/O	Equivalent circuit	Description
1	LD	O	<p>The circuit for Pin 1 (LD) is a differential output stage. It features two NPN transistors with their emitters connected to a common VEE supply. The bases are biased by a VCC supply through a 10k resistor. The collector of the left transistor is connected to Pin 1 through a 1k resistor. The collector of the right transistor is connected to a VCC supply through a 55.7k resistor. Diodes are connected to the bases of both transistors.</p>	Output pin of APC amplifier.
2	PD	I	<p>The circuit for Pin 2 (PD) is a differential input stage. It features two NPN transistors with their emitters connected to a common VEE supply. The bases are biased by a VCC supply through a 10k resistor. The collector of the left transistor is connected to Pin 2 through a 147 resistor. The collector of the right transistor is connected to a VCC supply through a 55k resistor. A 17µF capacitor is connected between the two collectors. Diodes are connected to the bases of both transistors.</p>	Input pin of APC amplifier.
3 4 5 6 14	A B C D FE BIAS	I I I I I	<p>The circuit for Pins 3, 4, 5, 6, and 14 is a complex multi-stage amplifier. It features four input channels (A, B, C, D) and an FE BIAS input. Each channel has a differential input stage with a 24k resistor and a 30k resistor. The outputs of these stages are connected to a common VEE supply through a 100µF capacitor. The circuit also includes a 4.9k resistor, a 174k resistor, a 25pF capacitor, and an 87k resistor. The VC input is connected to the circuit through a 164k resistor. Diodes are connected to the bases of the transistors.</p>	Input pin of RF and FE amplifier for Pins 3, 4, 5 and 6; focus bias adjustment for Pin 14.
7	VEE	—		VEE.

Pin No.	Symbol	I/O	Equivalent circuit	Description
8 9 10 11 18	F E EI EO LC/PD	I I — — I		<p>Input pin of tracking error amplifier for Pins 8 and 9. An external resistor for V-I conversion should be connected because these pins are for current input. Gain adjustment of input signal from Pin 9 for Pins 10 and 11. Pin 18 is a bias for LC when connected to Vcc and for PD IC when left open.</p>
12	VC	O		<p>DC voltage output pin of $(V_{CC} + V_{EE})/2$. Connect to GND when dual power supply ($\pm 2.5V$) is used; connect a smoothing capacitor when single power supply (+5V) is used.</p>
13	TE	O		<p>Output pin of tracking error amplifier. The F-E signal is output.</p>
15	FE	O		<p>Output pin of focus error amplifier.</p>

Pin No.	Symbol	I/O	Equivalent circuit	Description
16	RFO	O		Output pin of RF amplifier.
17	RFE	—		Equalizing pin is used of RF amplifier. Frequency response can be adjusted by connecting CR to this pin.
19	LD ON	I		ON/OFF selection pin of APC amplifier. ON for Vcc and OFF for VEE
20	VCC	—		Vcc.

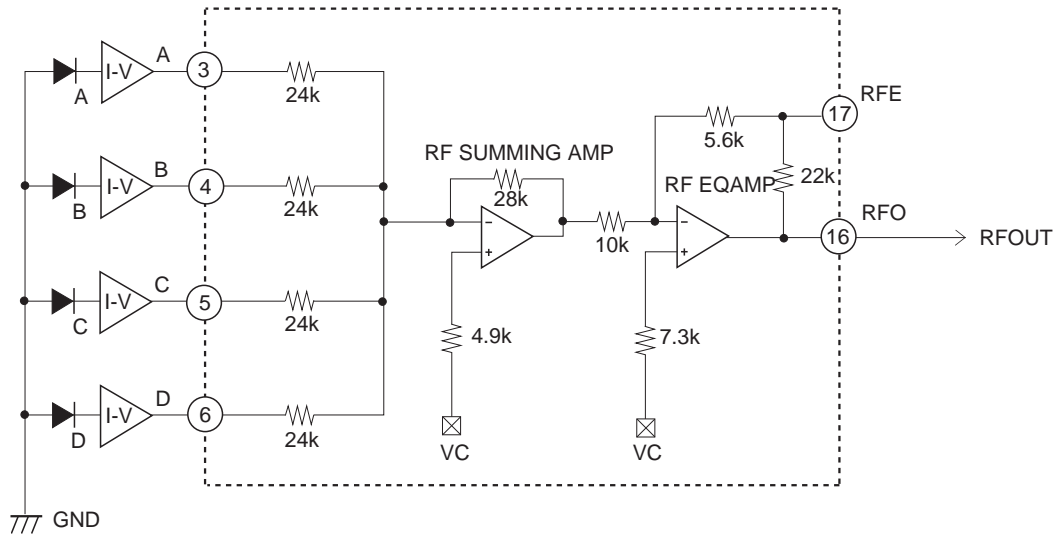
Electrical Characteristics Measurement Circuit



Description of Functions

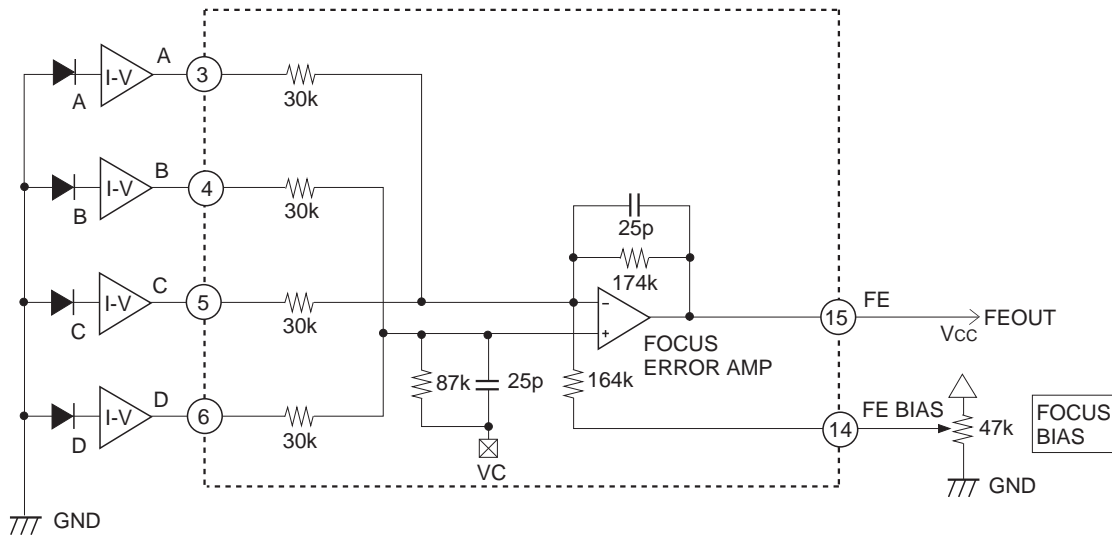
RF Amplifier

Each signal current from the photodiodes A, B, C and D is I-V converted, and input to Pins 3, 4, 5 and 6. These signals are added by the RF summing amplifier and equalized by the RF equalizing amplifier and then output to Pin 16. When the RF signal is equalized, an equalizing circuit is added to Pin 17.



Focus Error Amplifier

The operation of $(B + D) - (A + C)$ is performed and the signal is output to Pin 15. Pin 14 is used for bias adjustment of the focus error signal.

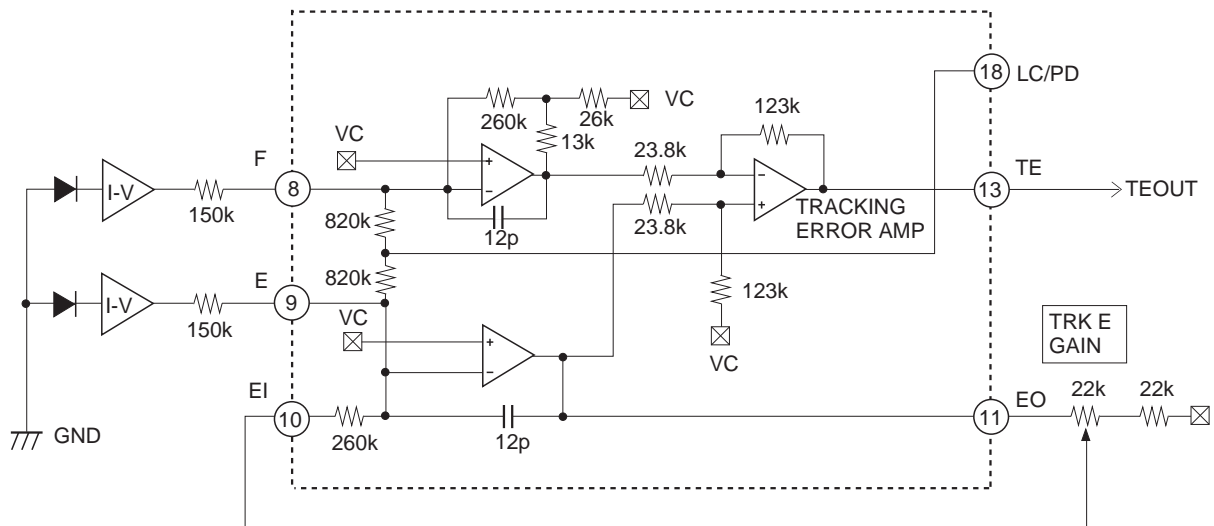


Tracking Error Amplifier

Each signal current from the photodiodes E and F is I-V converted and input to Pins 8 and 9 via an input resistor which determines the gain. The signal is amplified by the gain amplifier, operated by the tracking error amplifier and then the (F-E) signal is output to Pin 13.

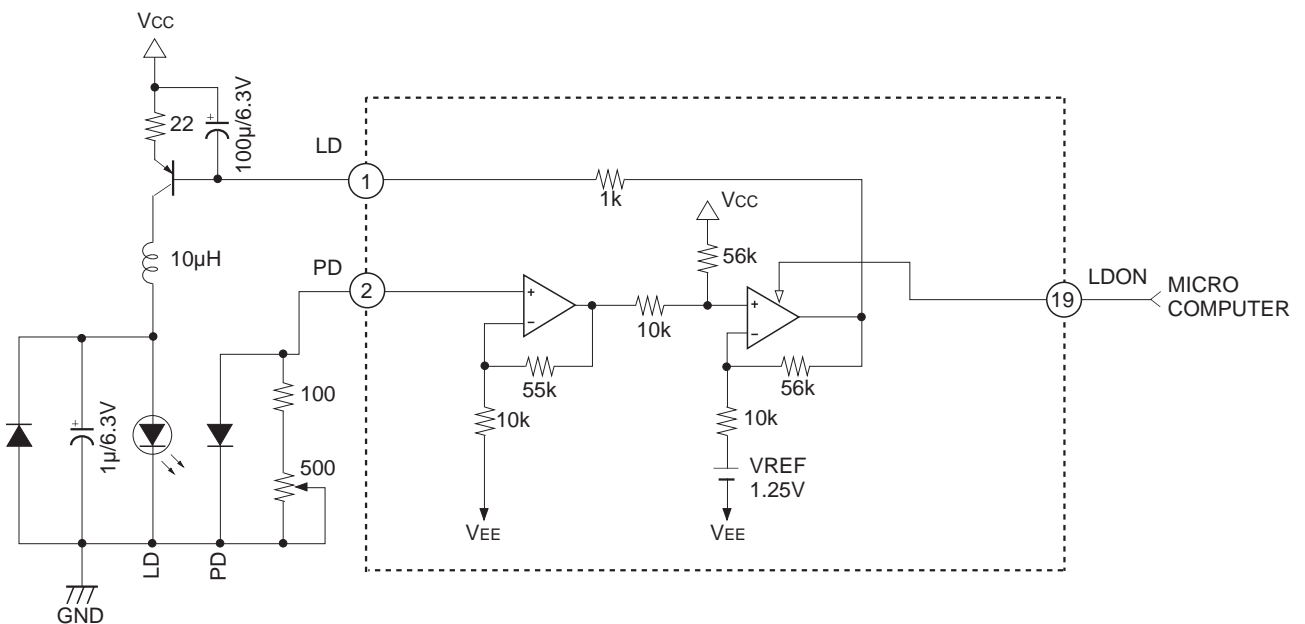
The E input gain can be adjusted by Pin 11.

Pin 18 can be used as a bias for LC when connected to VCC and as a bias for PD IC when left open.



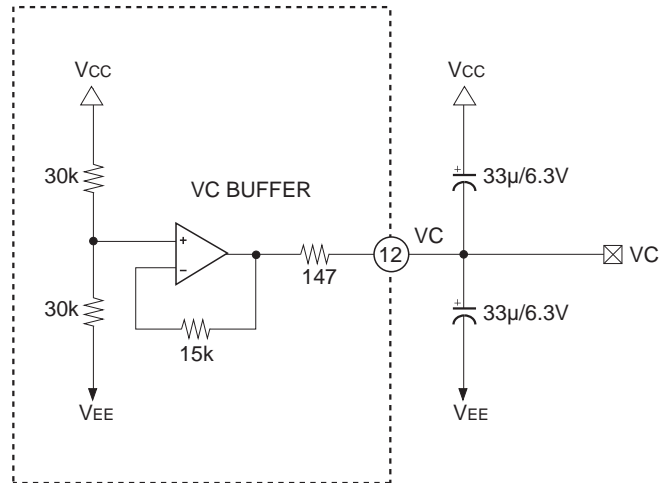
APC Circuit

When the laser diode is driven with constant current, the optical output possesses large negative temperature characteristics. Therefore, the current must be controlled with the monitor photodiode to ensure the output remains constant. This constitutes the APC circuit. When LD ON pin is connected to Vcc, APC is ON; connected to VEE, it is OFF.



Center Voltage Generation Circuit

This circuit provides the center potential when this IC is used at single power supply. The maximum current is approximately $\pm 3\text{mA}$. The output impedance is approximately 147Ω . Connect this circuit to GND when used at dual power supply.



Notes on Operation

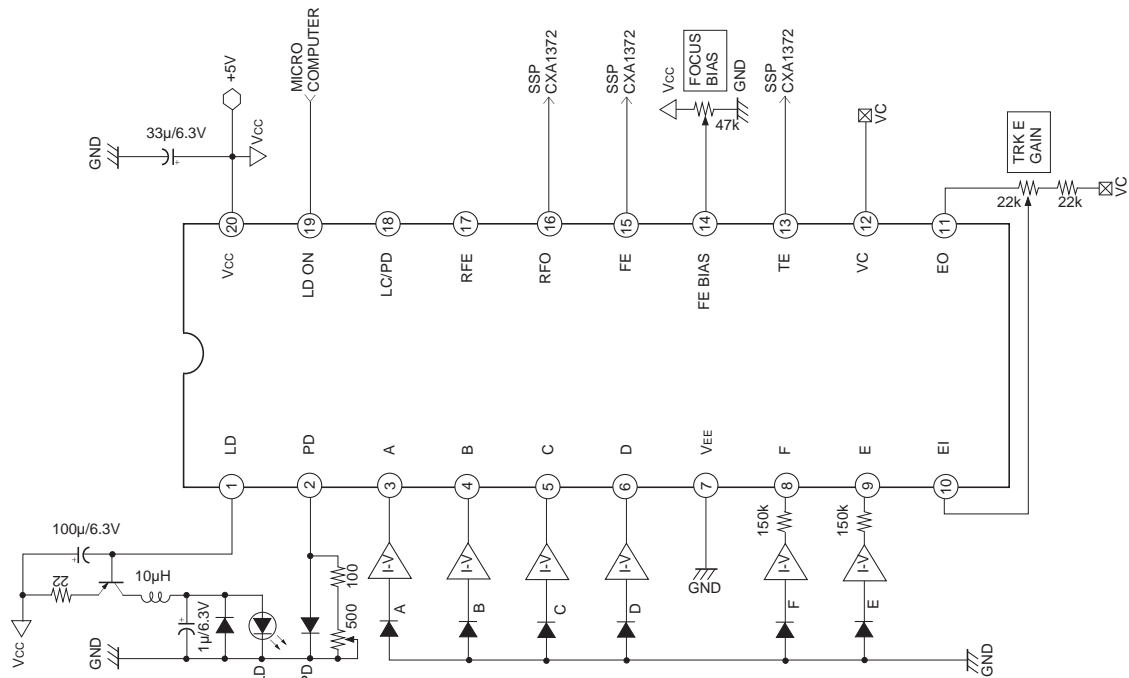
Power supply

The CXA1821M can be used either at dual power supply or single power supply. The table below shows the connection of power supply for each case.

	VCC	VEE	VC
Dual power supply	+power supply	-power supply	GND
Single power supply	Power supply	GND	OPEN

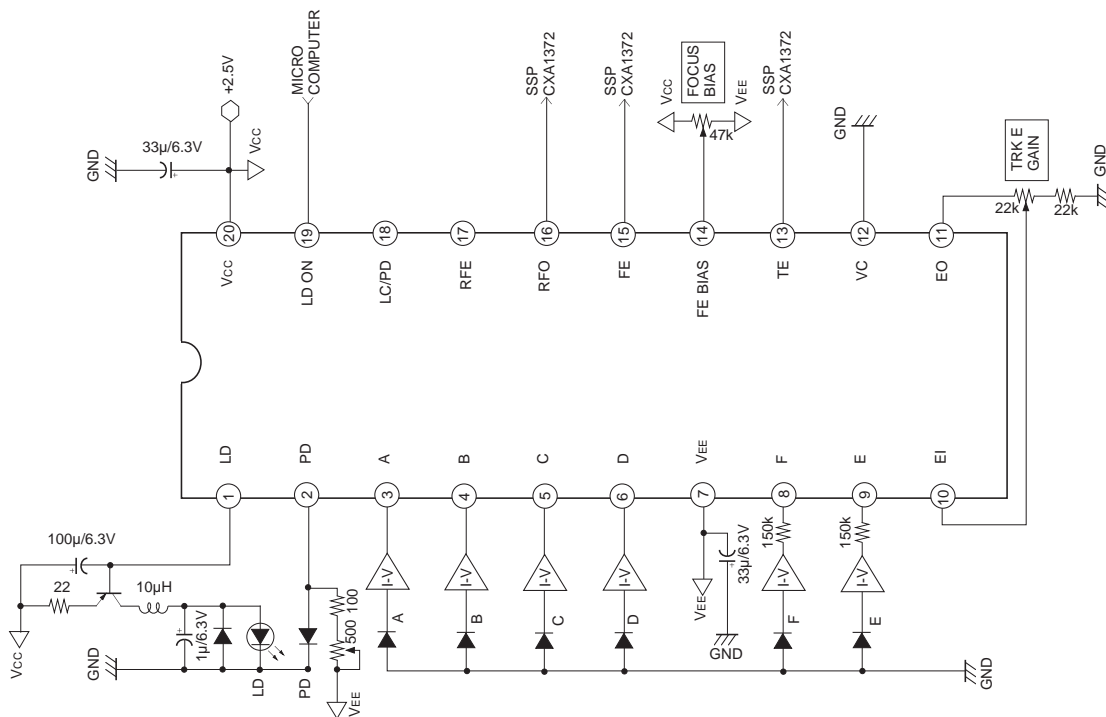
Application Circuit

- For single power supply +5V



* Connect Pin 18 to Vcc when LC is used.

- For dual power supply ±2.5V

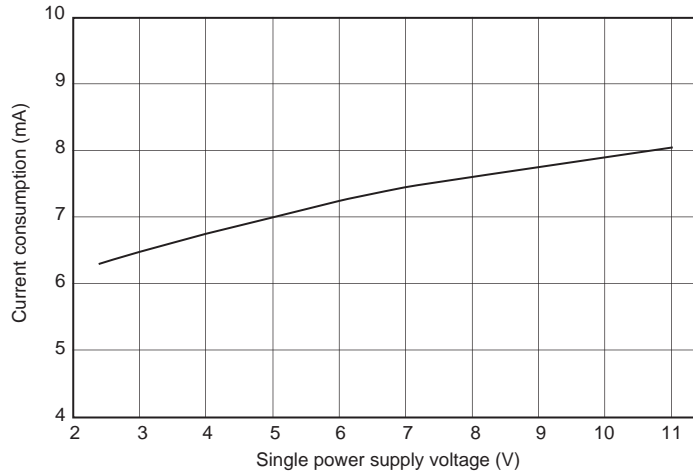


* Connect Pin 18 to Vcc when LC is used.

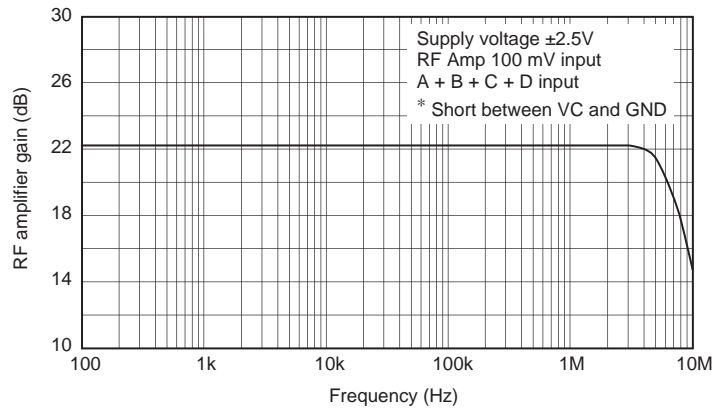
Application circuits shown are typical examples illustrating the operation of the devices. Sony cannot assume responsibility for any problems arising out of the use of these circuits or for any infringement of third party and other right due to same.

Example of Representative Characteristics

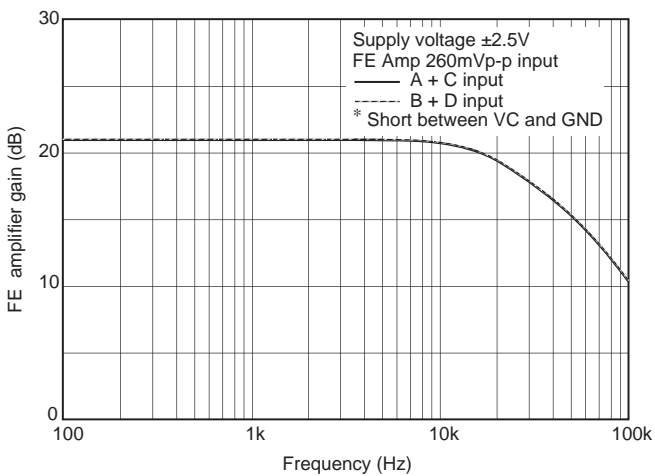
Current consumption characteristics



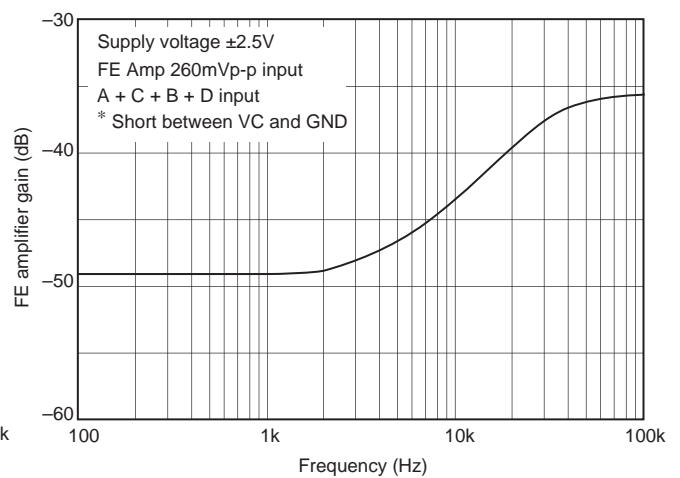
RF amplifier frequency characteristics

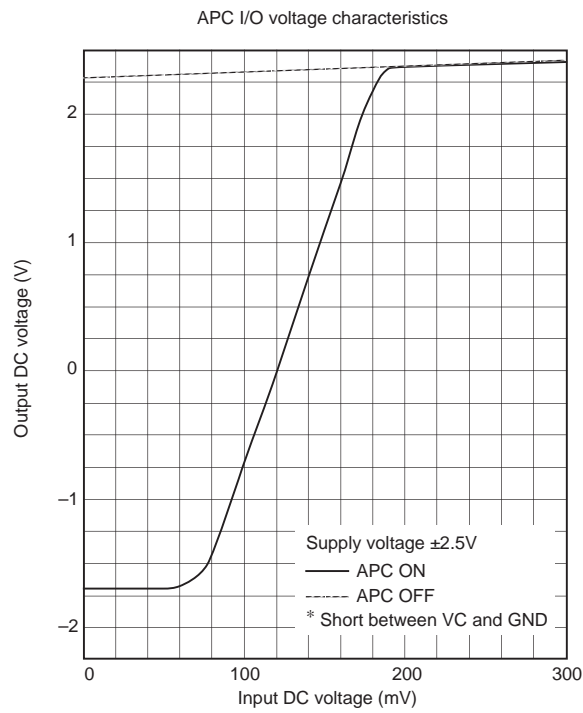
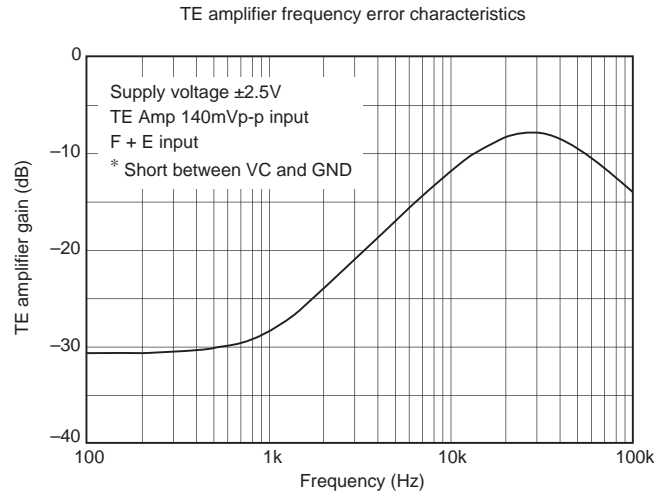
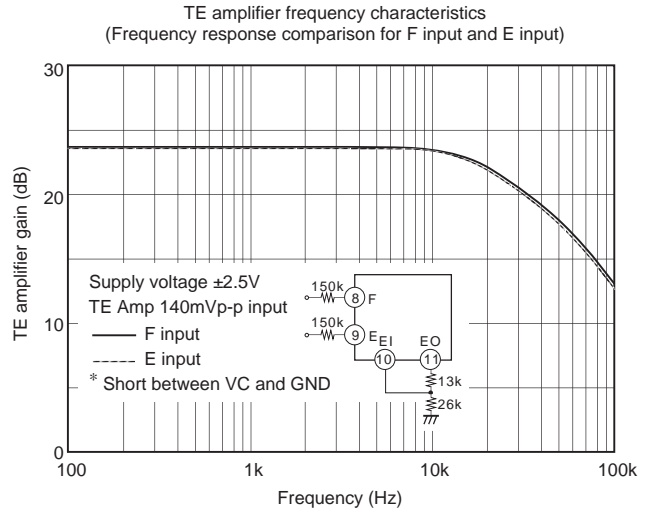
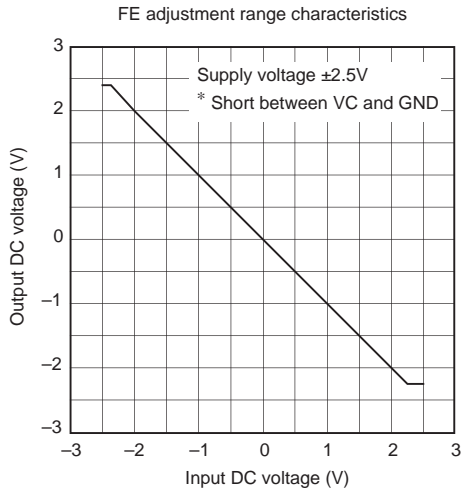


FE amplifier frequency characteristics
(Frequency response comparison for A+C input and B+D input)



FE amplifier frequency error characteristics

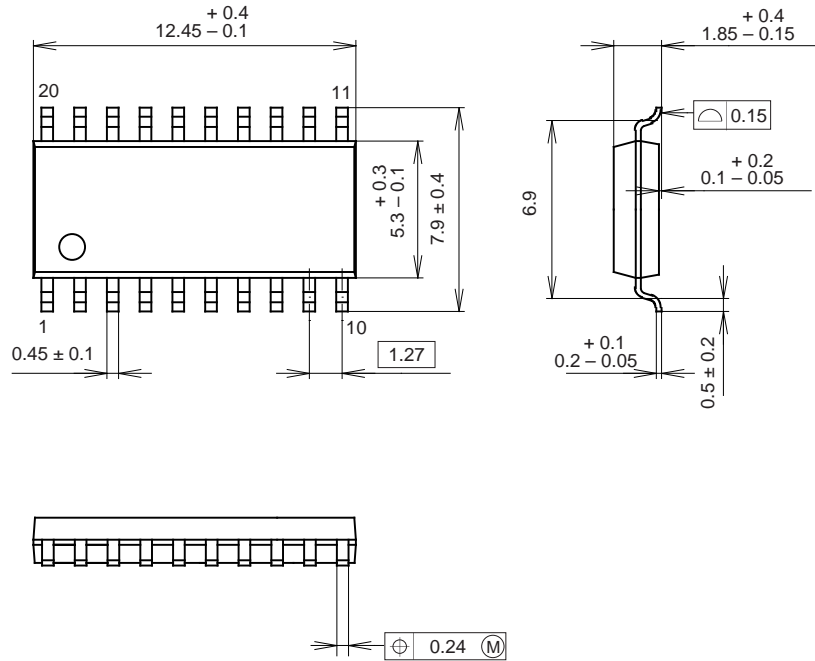




Package Outline

Unit: mm

20PIN SOP (PLASTIC)



PACKAGE STRUCTURE

SONY CODE	SOP-20P-L01
EIAJ CODE	SOP020-P-0300
JEDEC CODE	_____

PACKAGE MATERIAL	EPOXY RESIN
LEAD TREATMENT	SOLDER PLATING
LEAD MATERIAL	COPPER ALLOY
PACKAGE MASS	0.3g

This datasheet has been downloaded from:

www.DatasheetCatalog.com

Datasheets for electronic components.



LittleDiode supplies new, hard to find or obsolete electronic components and semiconductors all over the world.

With over two million different components listed you are sure to find the part you need.

Feel free to visit us today at our online store:

LittleDiode.com

Looking forward to providing you with the best possible service.