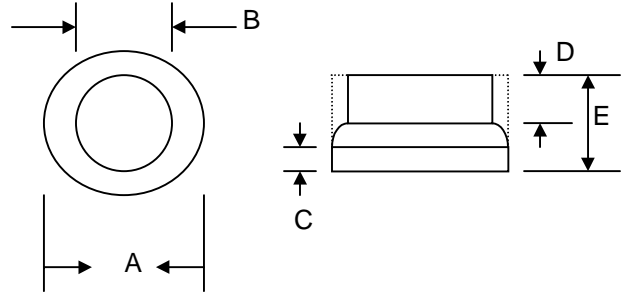


### Features

- Diffused Junction
- Low Leakage
- Low Cost
- High Surge Current Capability
- Die Size 220 mil HEX



### Mechanical Data

- Case: Protected with Silicon Rubber
- Terminal: Slug, Cu with Ag Plated
- Polarity: Indicated by Large Slug On Cathode Side
- Mounting Position: Any

C50		
Dim	Min	Max
A	—	7.23
B	—	6.55
C	0.75	—
D	1.0	—
E	—	2.2
All Dimensions in mm		

### Maximum Ratings and Electrical Characteristics @ $T_A=25^\circ\text{C}$ unless otherwise specified

Single Phase, half wave, 60Hz, resistive or inductive load.  
For capacitive load, derate current by 20%.

Characteristic	Symbol	C50A	C50B	C50D	C50G	C50J	C50K	C50M	Unit
Peak Repetitive Reverse Voltage	$V_{RRM}$	50	100	200	400	600	800	1000	V
Working Peak Reverse Voltage	$V_{RWM}$								
DC Blocking Voltage	$V_R$								
RMS Reverse Voltage	$V_{R(RMS)}$	35	70	140	280	420	560	700	V
Average Rectified Output Current @ $T_C = 150^\circ\text{C}$	$I_O$	50							A
Non-Repetitive Peak Forward Surge Current 8.3ms Single half sine-wave superimposed on rated load (JEDEC Method)	$I_{FSM}$	500							A
Forward Voltage @ $I_F = 100\text{A}$	$V_{FM}$	1.08							V
Peak Reverse Current At Rated DC Blocking Voltage @ $T_A = 25^\circ\text{C}$	$I_{RM}$	3.0							$\mu\text{A}$
Typical Thermal Resistance Junction to Ambient	$R_{\theta JA}$	26							K/W
Operating and Storage Temperature Range	$T_J, T_{STG}$	-40 to +150							$^\circ\text{C}$

\*Glass passivated forms are available upon request

## ORDERING INFORMATION

Product No.	Package Type	Shipping Quantity
C50A	7.23mm Cell	2000 Units/Box
C50B	7.23mm Cell	2000 Units/Box
C50D	7.23mm Cell	2000 Units/Box
C50G	7.23mm Cell	2000 Units/Box
C50J	7.23mm Cell	2000 Units/Box
C50K	7.23mm Cell	2000 Units/Box
C50M	7.23mm Cell	2000 Units/Box

Shipping quantity given is for minimum packing quantity only. For minimum order quantity, please consult the Sales Department.

Won-Top Electronics Co., Ltd (WTE) has checked all information carefully and believes it to be correct and accurate. However, WTE cannot assume any responsibility for inaccuracies. Furthermore, this information does not give the purchaser of semiconductor devices any license under patent rights to manufacturer. WTE reserves the right to change any or all information herein without further notice.

**WARNING:** DO NOT USE IN LIFE SUPPORT EQUIPMENT. WTE power semiconductor products are not authorized for use as critical components in life support devices or systems without the express written approval.

**Won-Top Electronics Co., Ltd.**

No. 44 Yu Kang North 3rd Road, Chine Chen Dist., Kaohsiung, Taiwan

**Phone:** 886-7-822-5408 or 886-7-822-5410

**Fax:** 886-7-822-5417

**Email:** sales@wontop.com

**Internet:** <http://www.wontop.com>

*We power your everyday.*



LittleDiode supplies new, hard to find or obsolete electronic components and semiconductors all over the world.

With over two million different components listed you are sure to find the part you need.

Feel free to visit us today at our online store:

[LittleDiode.com](http://LittleDiode.com)

Looking forward to providing you with the best possible service.