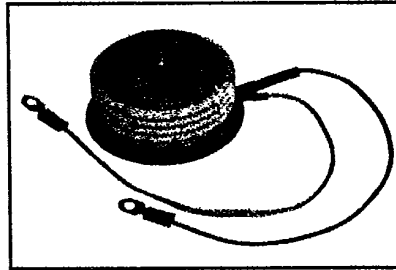
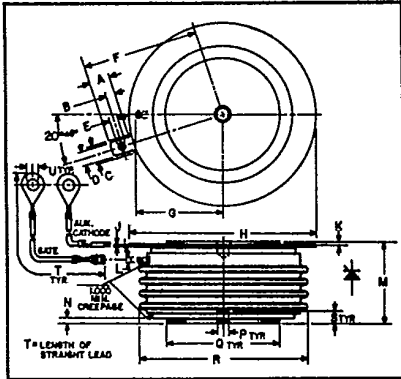




C391

Powerex, Inc. Hillis Street, Youngwood, Pennsylvania 15697 (412) 925-7272
 Powerex Europe, S.A., 428 Ave. G. Durand, BP107, 72003 LeMans, France (43) 72.75.15

Phase Control SCR
490 Amperes Avg
1300-1800 Volts



C391
Phase Control SCR
 490 Amperes/1300-1800 Volts

Description

Powerex Silicon Controlled Rectifiers (SCR) are designed for phase control applications. These are all-diffused, Press-Pak (Pow-R-Disco) devices employing the field-proven amplifying (di/namic) gate.

Features:

- Low On-State Voltage
- High di/dt
- High dv/dt
- Hermetic Packaging
- Excellent Surge and I²t Ratings

Applications:

- Power Supplies
- Battery Chargers
- Motor Control
- Light Dimmers
- VAR Generators

Ordering Information

Example: Select the complete six digit part number you desire from the table - i.e. C391PE is a 1500 Volt, 490 Ampere Phase Control SCR.

C391
Outline Drawing

Dimensions	Inches		Millimeters	
	Min.	Max.	Min.	Max.
A	.240	.260	6.096	6.604
B	.110	.130	2.794	3.302
C	.245		6.223	
D	.186	.191	4.724	4.851
E	.060	.075	1.524	1.905
F	—	1.430	—	36.32
G	—	1.065	—	27.051
H	2.200	2.500	55.88	63.50
J	.011	.019	2.794	3.483
K	.030	.130	.762	3.302
L	.056	.060	1.422	1.524
M	1.000	1.065	25.40	27.05
N	.030	.096	.762	2.438
P	.130	.150	3.302	3.810
Q	1.300	1.345	33.02	34.16
R	—	2.150	—	54.61
S	.067	.803	1.702	2.110
T	12.200	12.360	309.9	313.9
U	.137	.153	3.480	3.886

Type	Voltage		Current
	V _{DRM} V _{RRM}	Code	
C391	1300	PC	490
	1400	PD	
	1500	PE	
	1600	PM	
	1700	PS	
	1800	PN	



Powerex, Inc., Hillis Street, Youngwood, Pennsylvania 15697 (412) 925-7272

Powerex Europe, S.A., 428 Ave. G. Durand, BP107, 72003 LeMans, France (43) 72.75.15

C391

Phase Control SCR

490 Amperes Avg/1300-1800 Volts

Absolute Maximum Ratings

	Symbol	C391	Units
RMS On-State Current	$I_{T(RMS)}$	770	Amperes
Average On-State Current	$I_{T(av)}$	490	Amperes
Peak One-Cycle Surge (Non-Repetitive) On-State Current (60Hz)	I_{TSM}	8000	Amperes
Peak One-Cycle Surge (Non-Repetitive) On-State Current (50Hz)	I_{TSM}	7000	Amperes
Critical Rate-of-Rise of On-State Current (Non-Repetitive)	di/dt	150	Amperes/ μ s
Critical Rate-of-Rise of On-State Current (Repetitive)	di/dt	75	Amperes/ μ s
I^2t (for Fusing), One Cycle at 60Hz	I^2t	265,000	A ² sec
Peak Gate Power Dissipation	P_{GM}	200	Watts
Average Gate Power Dissipation	$P_{G(av)}$	5	Watts
Storage Temperature	T_{STG}	-40 to +150	°C
Operating Temperature	T_J	-40 to +125	°C
Mounting Force [Ⓞ]		2000 to 2500	lb.
Mounting Force [Ⓞ]		8.9 to 11.1	kN

Electrical and Thermal Characteristics

Characteristics	Symbol	Test Conditions	C391	Units
Voltage—Blocking State Maximums				
Forward Leakage, Peak	I_{DRM}	$T_J = 125^\circ\text{C}$, Rated V_{DRM}	45	mA
Reverse Leakage, Peak	I_{RRM}	$T_J = 125^\circ\text{C}$, Rated V_{RRM}	45	mA
Current—Conducting State Maximums				
Peak On-State Voltage	V_{TM}	$I_{TM} = 3000\text{A}$ Peak, Duty Cycle $\leq 0.01\%$, $T_C = 25^\circ\text{C}$	2.65	Volts
Switching				
Typical Turn-Off Time	t_q	$T_J = 125^\circ\text{C}$; $I_{TM} = 500$ Amps; $V_R = 50$ Volts Min.; .8 $\times V_{DRM}$ (Reapplied); Rate-of-Rise of Reapplied Off-State Voltage = 20V/ μ sec (linear); Commutation $di/dt = 25$ Amps/ μ sec; Repetition Rate = 1 pps; Gate Bias During Turn-Off Interval = 0 Volts, 100 Ω	200	μ sec
Typical Delay Time	t_d	$T_J = 25^\circ\text{C}$, $I_{TM} = 50$ Adc, V_{DRM} Rated. Gate Supply: 20 Volts, 20 Ω , 0.1 μ sec Max. Rise Time	1	μ sec
Min. Critical dv/dt exponential to V_{DRM}	dv/dt	0.8 V_{DRM} Rated, $T_J = 125^\circ\text{C}$	200	V/ μ sec
Thermal				
Maximum Thermal Resistance, [Ⓞ] double sided cooling				
Junction to Case	$R_{\theta JC}$.06	°C/Watt
Case to Sink, Lubricated	$R_{\theta CS}$.02	°C/Watt
Gate—Maximum Parameters				
Gate Current to Trigger	I_{GT}	$V_D = 6\text{Vdc}$, $T_C = 25^\circ\text{C}$, $R_L = 3\Omega$	150	mA
Gate Voltage to Trigger	V_{GT}	$T_C = -40$ to $+125^\circ\text{C}$, $V_D = 6\text{Vdc}$, $R_L = 3\Omega$	5	Volts
Non-Triggering Gate Voltage	V_{GDM}	$V = \text{rated } V_{DRM}$, $T_C = 125^\circ\text{C}$, $R_L = 1000\Omega$.15	Volts
Peak Forward Gate Current	I_{GTM}		10	Amperes
Peak Reverse Gate Voltage	V_{GRM}		5	Volts

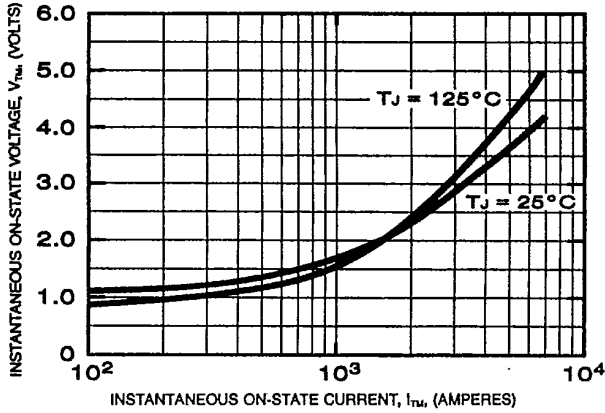
[Ⓞ] Consult recommended mounting procedures.



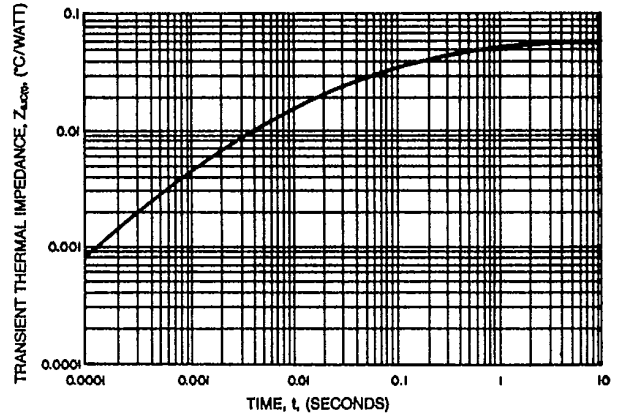
Powerex, Inc., Hillis Street, Youngwood, Pennsylvania 15697 (412) 925-7272
 Powerex Europe, S.A., 428 Ave. G. Durand, BP107, 72003 LeMans, France (43) 72.75.15

C391
Phase Control SCR
 490 Amperes Avg/1300-1800 Volts

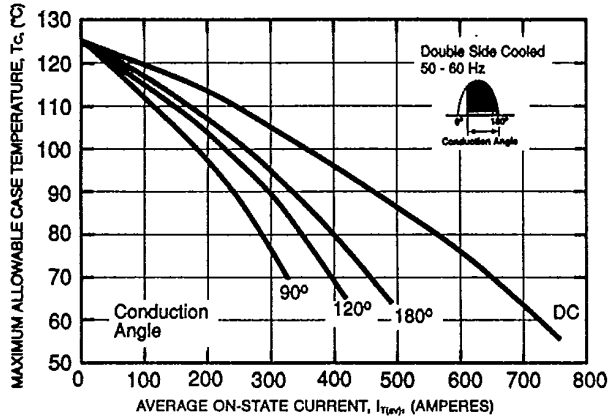
MAXIMUM ON-STATE CHARACTERISTICS



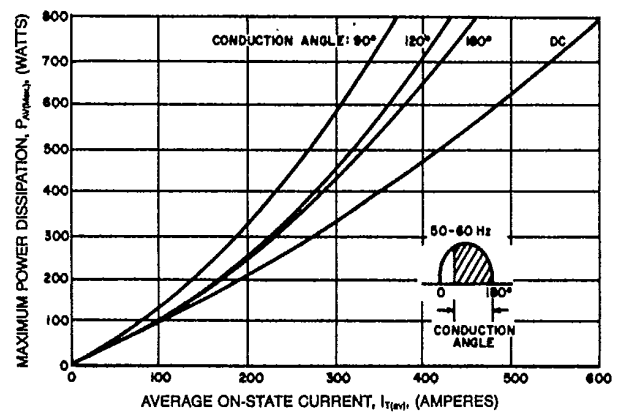
TRANSIENT THERMAL IMPEDANCE CHARACTERISTICS (JUNCTION TO CASE)



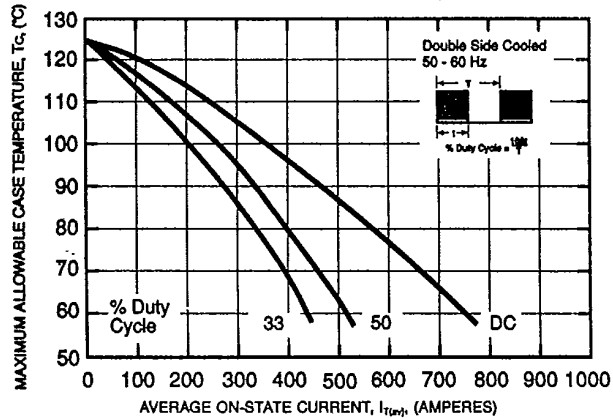
MAXIMUM ALLOWABLE CASE TEMPERATURE (SINUSOIDAL WAVEFORM)



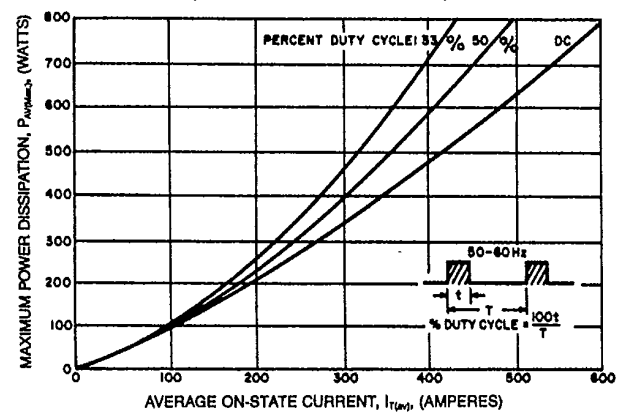
MAXIMUM ON-STATE POWER DISSIPATION (SINUSOIDAL WAVEFORM)



MAXIMUM ALLOWABLE CASE TEMPERATURE (RECTANGULAR WAVEFORM)



MAXIMUM ON-STATE POWER DISSIPATION (RECTANGULAR WAVEFORM)

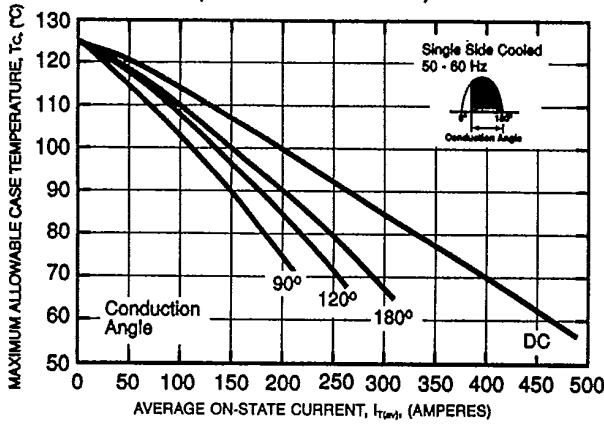




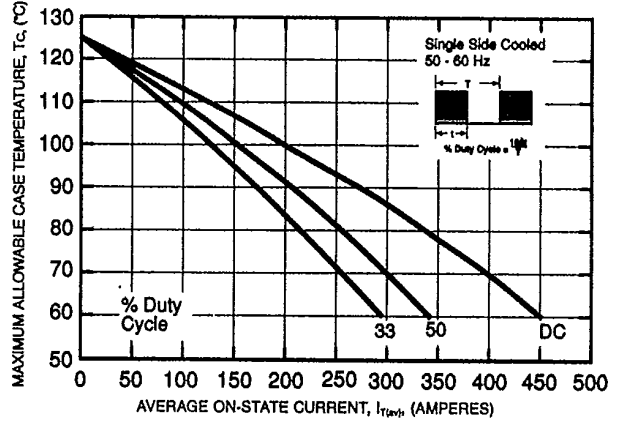
Powerex, Inc., Hillis Street, Youngwood, Pennsylvania 15697 (412) 925-7272
 Powerex Europe, S.A., 428 Ave. G. Durand, BP107, 72003 LeMans, France (43) 72.75.15

C391
 Phase Control SCR
 490 Amperes Avg/1300-1800 Volts

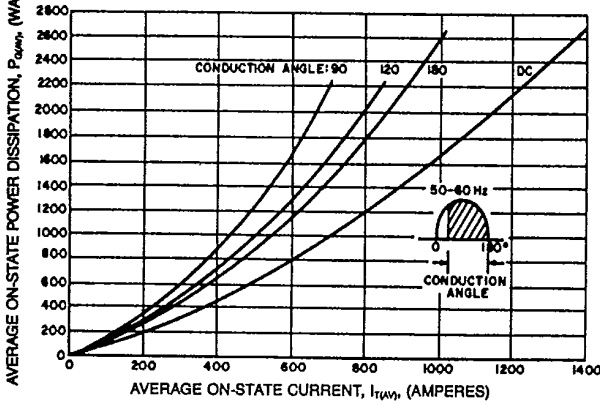
MAXIMUM ALLOWABLE CASE TEMPERATURE (SINUSOIDAL WAVEFORM)



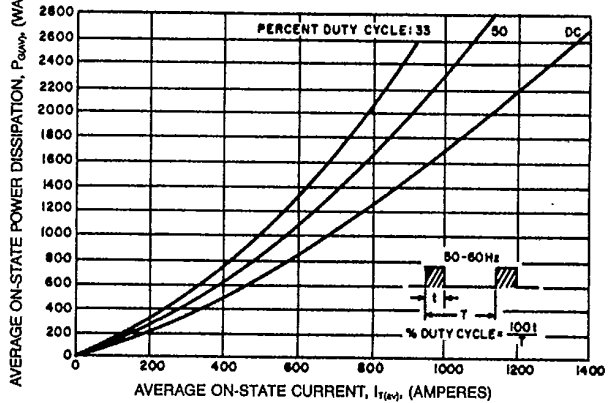
MAXIMUM ALLOWABLE CASE TEMPERATURE (RECTANGULAR WAVEFORM)



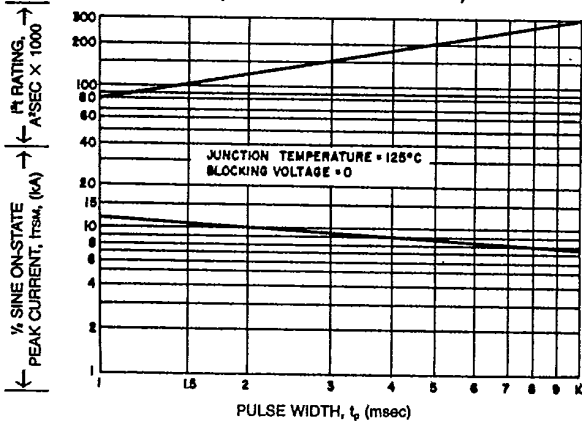
MAXIMUM ON-STATE POWER DISSIPATION (SINUSOIDAL WAVEFORM — EXTENDED)



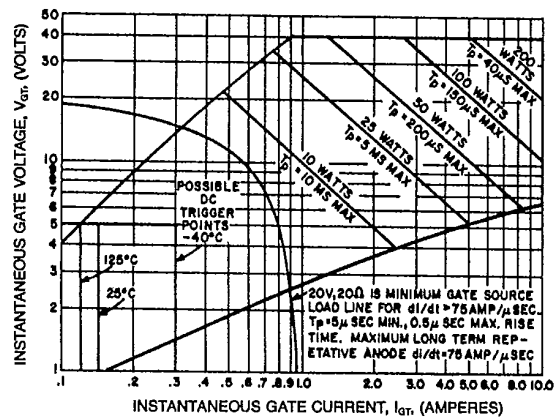
MAXIMUM ON-STATE POWER DISSIPATION (RECTANGULAR WAVEFORM — EXTENDED)



SUB-CYCLE SURGE AND I^2t RATINGS (RATED LOAD CONDITIONS)



GATE CHARACTERISTICS





LittleDiode supplies new, hard to find or obsolete electronic components and semiconductors all over the world.

With over two million different components listed you are sure to find the part you need.

Feel free to visit us today at our online store:

LittleDiode.com

Looking forward to providing you with the best possible service.