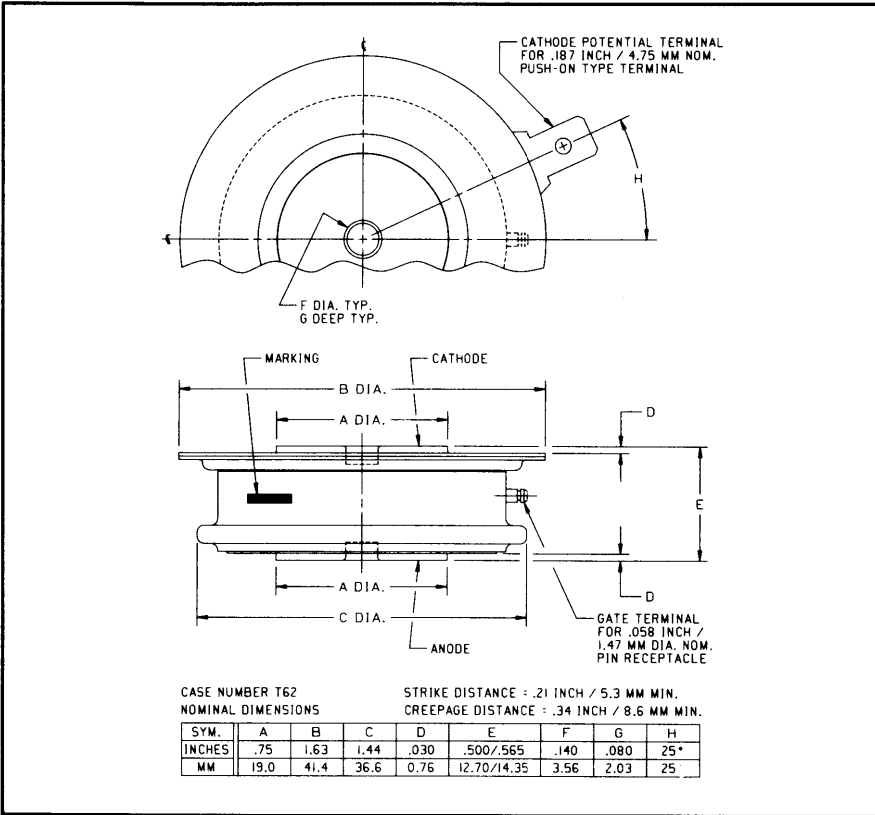
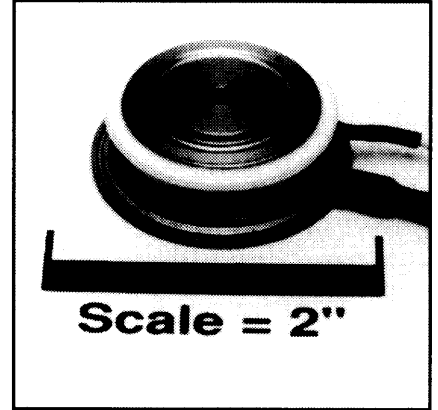


Powerex, Inc., 200 Hillis Street, Youngwood, Pennsylvania 15697-1800 (412) 925-7272  
 Powerex, Europe, S.A. 428 Avenue G. Durand, BP107, 72003 Le Mans, France (43) 41.14.14

**Phase Control SCR**  
 310 Amperes Average  
 1600 Volts



C380\_\_X500 (Outline Drawing)



C380\_\_X500 Phase Control SCR  
 310 Amperes Average, 1600 Volts

### Ordering Information:

Select the complete nine digit part number you desire from the table, i.e. C380PMX500 is a 1600 Volt, 310 Ampere Phase Control SCR.

Type	Voltage		Current
	V <sub>DRM</sub> V <sub>RRM</sub>	Code	I <sub>T(av)</sub>
C380__X500	200	B	310
	400	D	
	600	M	
	800	N	
	1000	P	
	1200	PB	
	1400	PD	
1600	PM		

### Description:

Powerex Silicon Controlled Rectifiers (SCR) are designed for phase control applications. These are all-diffused, Press-Pak (Pow-R-Disc) devices employing the field-proven amplifying (di/namic) gate.

### Features:

- Low On-State Voltage
- High di/dt
- High dv/dt
- Hermetic Packaging
- Excellent Surge and I<sup>2</sup>t Ratings

### Applications:

- Power Supplies
- Battery Chargers



Powerex, Inc., 200 Hillis Street, Youngwood, Pennsylvania 15697-1800 (412) 925-7272  
 Powerex, Europe, S.A. 428 Avenue G. Durand, BP107, 72003 Le Mans, France (43) 41.14.14

C380\_X500  
 Phase Control SCR  
 310 Amperes Average, 1600 Volts

### Absolute Maximum Ratings

	Symbol	C380_X500	Units
RMS On-State Current @ $T_C = 83^\circ\text{C}$	$I_{T(RMS)}$	500	Amperes
Average On-State Current @ $T_C = 83^\circ\text{C}$	$I_{T(av)}$	310	Amperes
Peak One-Cycle Surge (Non-Repetitive) On-State Current (60Hz)	$I_{TSM}$	5500	Amperes
Peak One-Cycle Surge (Non-Repetitive) On-State Current (50Hz)	$I_{TSM}$	5000	Amperes
Critical Rate-of-Rise of On-State Current (Non-Repetitive)	$di/dt$	800	Amperes/ $\mu\text{s}$
Critical Rate-of-Rise of On-State Current (Repetitive)	$di/dt$	500	Amperes/ $\mu\text{s}$
$I^2t$ (for Fusing), One Cycle at 60Hz	$I^2t$	125,000	$\text{A}^2\text{sec}$
Peak Gate Power Dissipation	$P_{GM}$	10	Watts
Average Gate Power Dissipation	$P_{G(av)}$	2	Watts
Storage Temperature	$T_{STG}$	-40 to 150	$^\circ\text{C}$
Operating Temperature	$T_J$	-40 to 125	$^\circ\text{C}$
Mounting Force		720 to 880	lb.
Mounting Force		3.2 to 3.92	kN

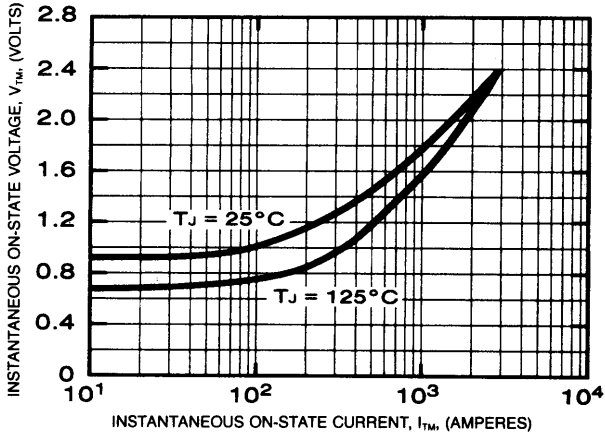
### Electrical and Thermal Characteristics

Characteristics	Symbol	Test Conditions	C380_X500	Units
<b>Voltage—Blocking State Maximums</b>				
Forward Leakage, Peak	$I_{DRM}$	$T_J = 125^\circ\text{C}, V = V_{DRM}$	20	mA
Reverse Leakage, Peak	$I_{RRM}$	$T_J = 125^\circ\text{C}, V = V_{RRM}$	20	mA
<b>Current—Conducting State Maximums</b>				
Peak On-State Voltage	$V_{TM}$	$T_C = 125^\circ\text{C}, I_{TM} = 1500\text{A}, \text{Duty Cycle} = 0.01\%$	1.75	Volts
<b>Switching</b>				
Typical Turn-On Delay	$t_d$	$T_C = 25^\circ\text{C}, I_T = 100\text{A}, V_{DRM} = \text{rated}.$ Gate Supply 10V Open Circuit, 25 $\Omega$ , 0.1 $\mu\text{sec}$ max. rise time	1	$\mu\text{sec}$
Min. Critical $dv/dt$ exponential to $V_{DRM}$	$dv/dt$	$T_J = 125^\circ\text{C}, \text{Gate open circuited}.$	200	$\text{V}/\mu\text{sec}$
<b>Thermal</b>				
Maximum Thermal Resistance, double sided cooling Junction to Case	$R_{\theta JC}$		0.095	$^\circ\text{C}/\text{Watt}$
Case to Sink, Lubricated	$R_{\theta CS}$		0.02	$^\circ\text{C}/\text{Watt}$
<b>Gate—Maximum Parameters</b>				
Gate Current to Trigger	$I_{GT}$	$T_C = 25^\circ\text{C}, V_D = 6\text{V}, R_L = 3 \Omega$	150	mA
Gate Voltage to Trigger	$V_{GT}$	$T_C = -40^\circ\text{C} \text{ to } 125^\circ\text{C}, V_D = 6\text{V}, R_L = 3 \Omega$	3.0	Volts
Non-Triggering Gate Voltage	$V_{GDM}$	$T_J = 125^\circ\text{C}, \text{Rated } V_{DRM}, R_L = 1000 \Omega$	0.15	Volts
Peak Forward Gate Current	$I_{GTM}$		10	Amperes
Peak Reverse Gate Voltage	$V_{GRM}$		5	Volts

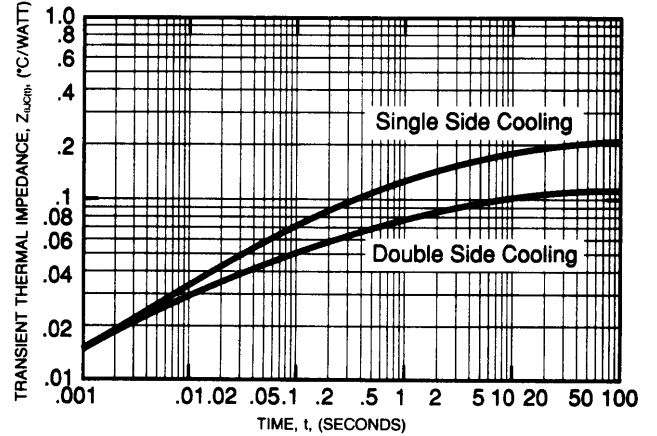
Powerex, Inc., 200 Hillis Street, Youngwood, Pennsylvania 15697-1800 (412) 925-7272  
 Powerex, Europe, S.A. 428 Avenue G. Durand, BP107, 72003 Le Mans, France (43) 41.14.14

**C380\_X500**  
**Phase Control SCR**  
 310 Amperes Average, 1600 Volts

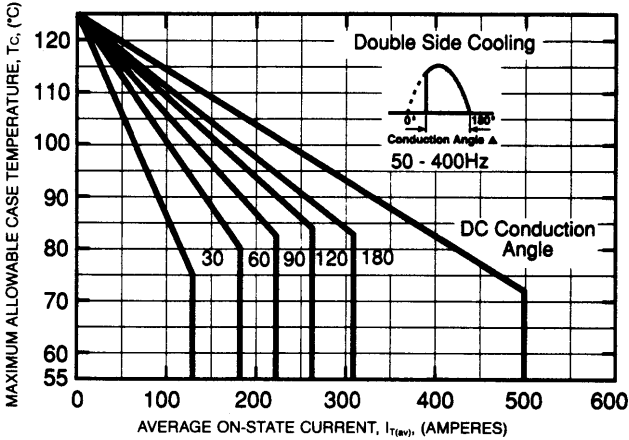
**MAXIMUM ON-STATE CHARACTERISTICS**



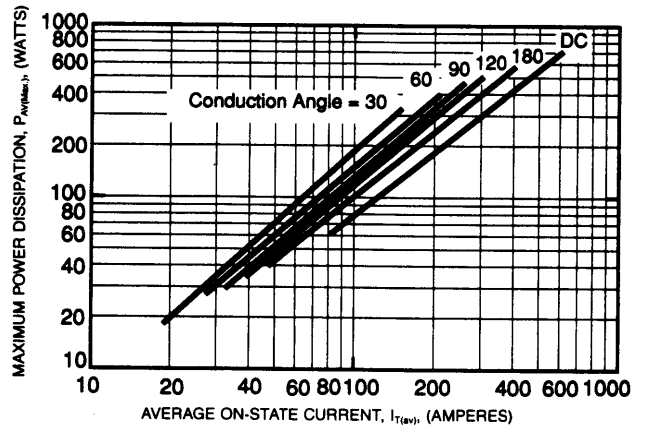
**TRANSIENT THERMAL IMPEDANCE CHARACTERISTICS (JUNCTION TO CASE)**



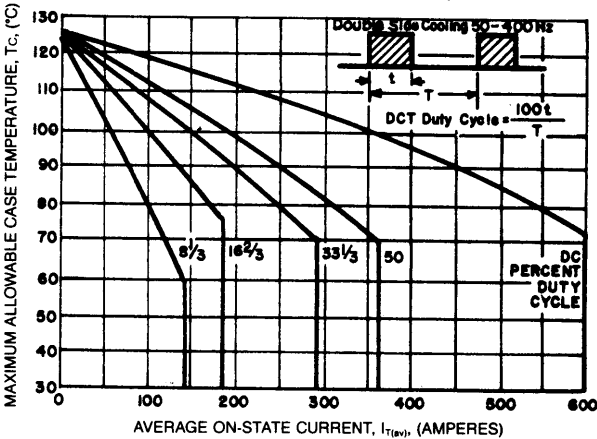
**MAXIMUM ALLOWABLE CASE TEMPERATURE (SINUSOIDAL WAVEFORM)**



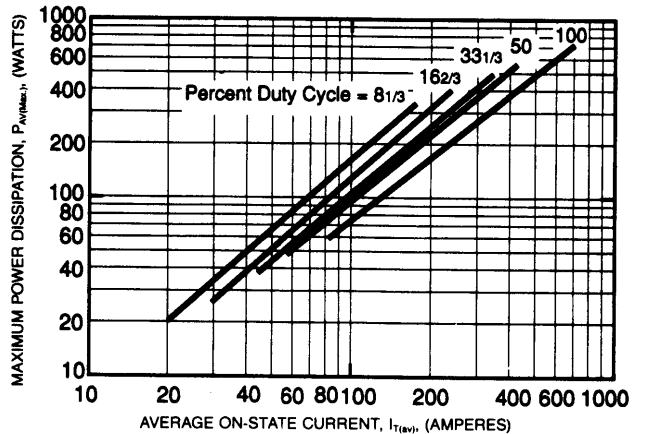
**MAXIMUM ON-STATE POWER DISSIPATION (SINUSOIDAL WAVEFORM)**



**MAXIMUM ALLOWABLE CASE TEMPERATURE (RECTANGULAR WAVEFORM)**



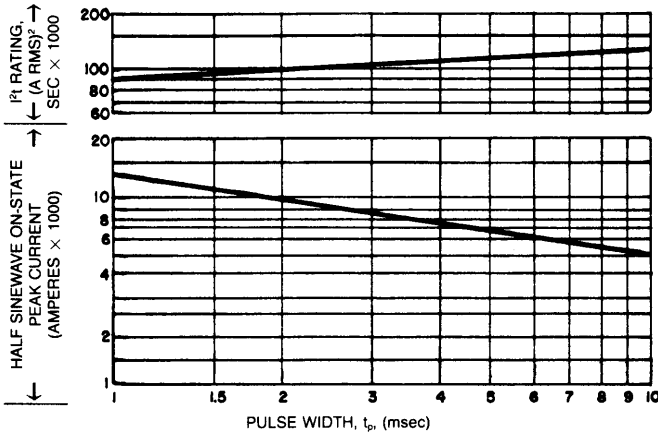
**MAXIMUM ON-STATE POWER DISSIPATION (RECTANGULAR WAVEFORM)**



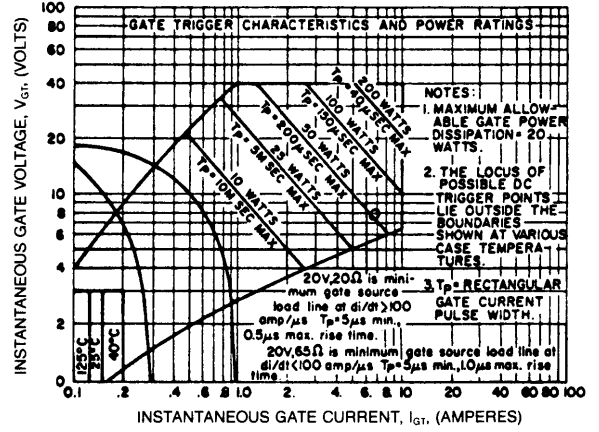
Powerex, Inc., 200 Hillis Street, Youngwood, Pennsylvania 15697-1800 (412) 925-7272  
 Powerex, Europe, S.A. 428 Avenue G. Durand, BP107, 72003 Le Mans, France (43) 41.14.14

**C380\_X500**  
**Phase Control SCR**  
 310 Amperes Average, 1600 Volts

**SUB-CYCLE SURGE AND  $I^2t$  RATINGS  
 (RATED LOAD CONDITIONS)**



**GATE CHARACTERISTICS**



- NOTES:**
1. Maximum allowable gate power dissipation = 20 watts.
  2. THE LOCUS OF POSSIBLE DC TRIGGER POINTS LIE OUTSIDE THE BOUNDARIES SHOWN AT VARIOUS CASE TEMPERATURES.
  3.  $T_p$  = RECTANGULAR GATE CURRENT PULSE WIDTH.



LittleDiode supplies new, hard to find or obsolete electronic components and semiconductors all over the world.

With over two million different components listed you are sure to find the part you need.

Feel free to visit us today at our online store:

[LittleDiode.com](http://LittleDiode.com)

Looking forward to providing you with the best possible service.