

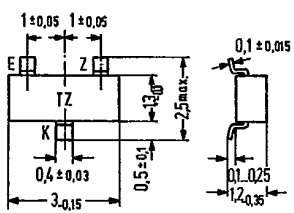
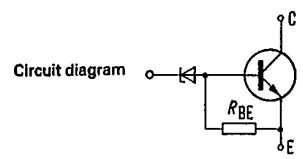
Control Unit

25C 04877 D

SIEMENS AKTIENGESELLSCHAFT

This component, a transistor with integrated base emitter resistance and a Z diode, in TO 236 case (24 A 3 DIN 41869) is designed for use as control unit in various professional and industrial electronic circuits. Due to the compact design of microelectronic circuits, it is particularly suitable for hybrid circuits in thick and thin film technology. The type is marked with the code letters "TZ".

Type	Mark	Ordering code
BZW 20	TZ	Q62702-Z1387



Approx. weight 0.02 g
Dimensions in mm

Maximum ratings

Collector-emitter voltage	V_{CE0}	20	V
Base-emitter voltage	V_{ZE}	8.4 to 9.5	V
Collector current	I_C	100	mA
Base current	I_z	10	mA
Storage temperature range	T_{stg}	-55 to +125	°C
Junction temperature	T_j	115	°C
Total power dissipation ($T_{amb} \leq 45^\circ\text{C}$)	P_{tot}	150	mW

Thermal resistance

Junction to ambient air if mounted on:			
Glass substrate (7 x 7 x 1 mm)	R_{thJA}	< 700	K/W
Glass fiber substrate (30 x 12 x 1.5 mm)	R_{thJA}	< 450	K/W
Ceramic substrate (30 x 12 x 1 mm)	R_{thJA}	< 450	K/W

— SIEMENS AKTIENGESELLSCHAFT —

Static characteristics ($T_{amb} = 25^\circ\text{C}$)

Collector cutoff current

($V_{CE} = 20\text{ V}$)

($V_{CE} = 20\text{ V}; T_{amb} = 125^\circ\text{C}$)

Collector-emitter breakdown voltage

($I_C = 100\ \mu\text{A}$)

DC current gain

($I_C = 50\text{ mA}; V_{CE} = 1.5\text{ V}$)

Collector-emitter saturation voltage

($I_C = 18\text{ mA}; I_Z = 2\text{ mA}$)

Differential current gain

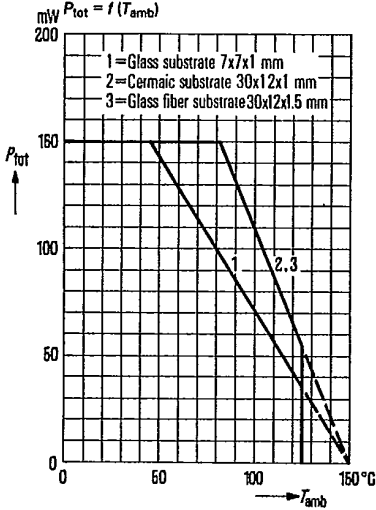
($I_C = 16\text{ mA}; V_{CE} = 1.5\text{ V}$)

Differential transconductance

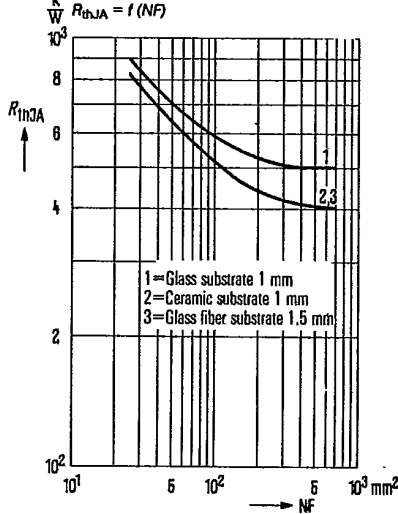
($I_C = 18\text{ mA}; V_{CE} = 1.5\text{ V}$)

I_{CEO}	< 100	nA
I_{CEO}	< 30	μA
$V_{(BR)CEO}$	> 20	V
h_{FE}	> 15	-
V_{CEsat}	< 0.4	V
$h_{fe} = \frac{\Delta I_C}{\Delta I_Z}$	250	-
$S = \frac{\Delta I_C}{\Delta V_{ZE}}$	700	mS

Total perm. power dissipation versus temperature

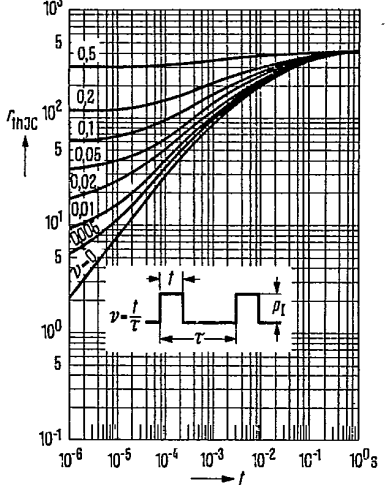


Thermal resistance versus substrate area

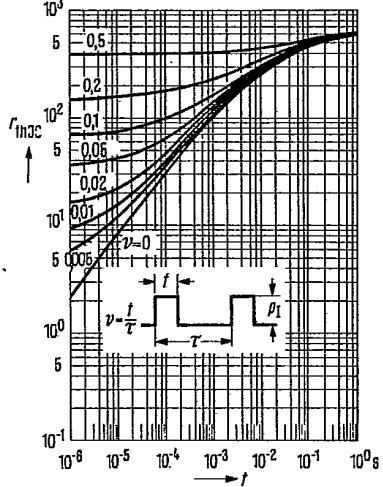


SIEMENS AKTIENGESELLSCHAFT

Permissible pulse load for ceramic substrate 30 x 12 x 1,5 mm
 $r_{thJC} = f(t); v = \text{parameter}$

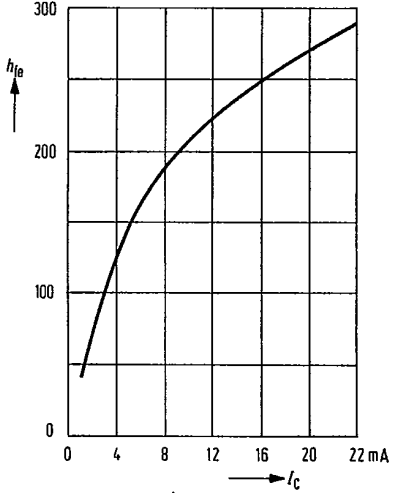


Permissible pulse load for glass substrate 7 x 7 x 1 mm
 $r_{thJC} = f(t); v = \text{parameter}$



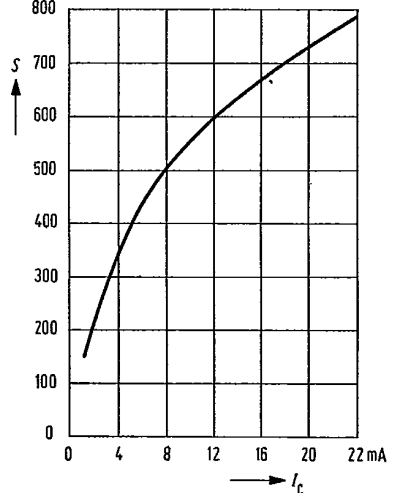
Differential current gain

$h_{fe} = \frac{\Delta I_c}{\Delta I_b} = f(I_c)$
 $V_{CE} = 1,5 \text{ V}; f = 1 \text{ kHz}$



Differential transconductance

$S = \frac{\Delta I_c}{\Delta V_{BE}} = f(I_c)$
 $V_{CE} = 1,5 \text{ V}; f = 1 \text{ kHz}$





LittleDiode supplies new, hard to find or obsolete electronic components and semiconductors all over the world.

With over two million different components listed you are sure to find the part you need.

Feel free to visit us today at our online store:

LittleDiode.com

Looking forward to providing you with the best possible service.