



BTD4M

Silicon Planar Type

Bidirectional Diode

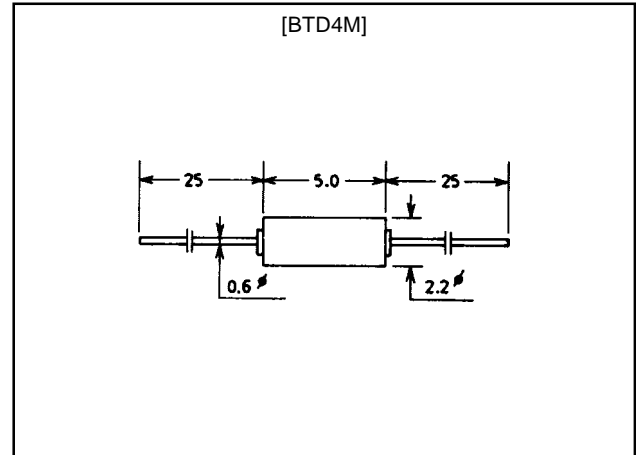
Features

- Small size and light weight.
- DHD type package.

Package Dimensions

unit:mm

1107



Specifications

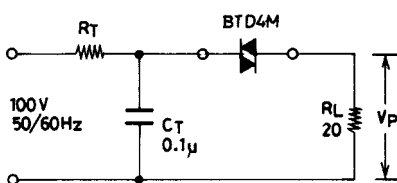
Absolute Maximum Ratings at Ta = 25°C

Parameter	Symbol	Conditions	Ratings	Unit
Peak Current	I_P	f=120Hz, pulse width 10μs	±2	A
Junction Temperature	T_J		-40 to +125	°C
Storage Temperature	T_{stg}		-40 to +125	°C

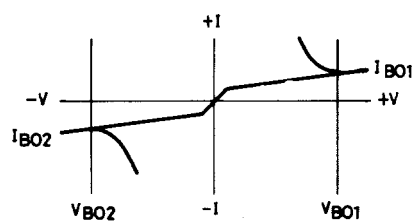
Electrical Characteristics at Ta = 25°C

Parameter	Symbol	Conditions	Ratings			Unit
			min	typ	max	
Breakover Voltage	$V_{BO1}(V_{BO2})$		29		37	V
Breakover Voltage Deviation	$\Delta V_{BO} V_{BO1} - V_{BO2} $				3	V
Breakover Current	$I_{BO1}(I_{BO2})$				50	μA
Temperature Coefficient of Breakover Voltage				0.1		%/°C
Peak Output Voltage	V_P		5			V

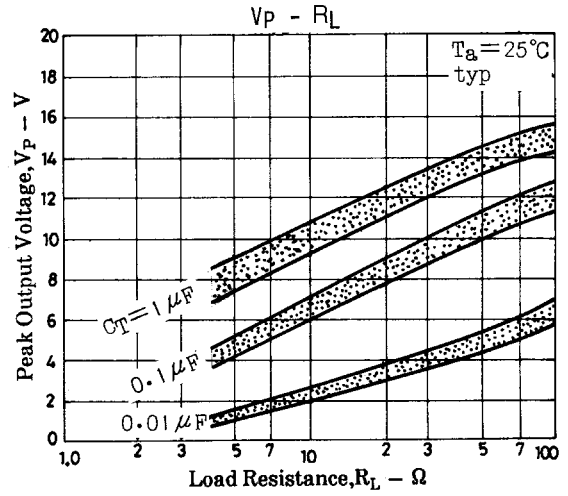
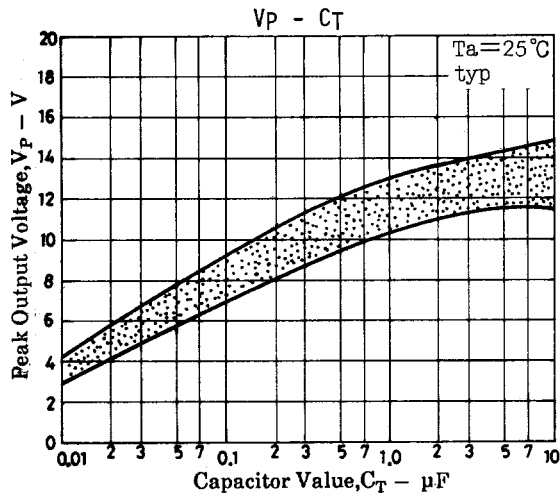
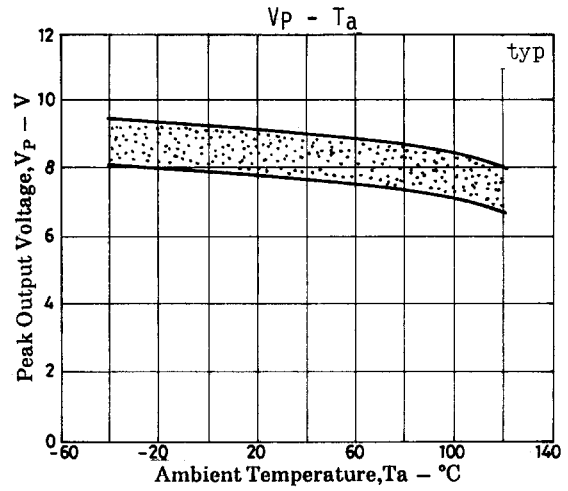
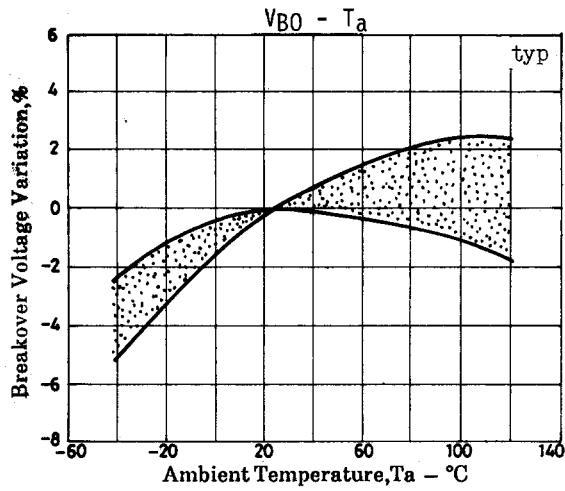
Basic Circuit



Basic Characteristic



BTD4M



■ No products described or contained herein are intended for use in surgical implants, life-support systems, aerospace equipment, nuclear power control systems, vehicles, disaster/crime-prevention equipment and the like, the failure of which may directly or indirectly cause injury, death or property loss.

■ Anyone purchasing any products described or contained herein for an above-mentioned use shall:

- ① Accept full responsibility and indemnify and defend SANYO ELECTRIC CO., LTD., its affiliates, subsidiaries and distributors and all their officers and employees, jointly and severally, against any and all claims and litigation and all damages, cost and expenses associated with such use:
- ② Not impose any responsibility for any fault or negligence which may be cited in any such claim or litigation on SANYO ELECTRIC CO., LTD., its affiliates, subsidiaries and distributors or any of their officers and employees jointly or severally.

■ Information (including circuit diagrams and circuit parameters) herein is for example only; it is not guaranteed for volume production. SANYO believes information herein is accurate and reliable, but no guarantees are made or implied regarding its use or any infringements of intellectual property rights or other rights of third parties.

This catalog provides information as of May, 1998. Specifications and information herein are subject to change without notice.



LittleDiode supplies new, hard to find or obsolete electronic components and semiconductors all over the world.

With over two million different components listed you are sure to find the part you need.

Feel free to visit us today at our online store:

LittleDiode.com

Looking forward to providing you with the best possible service.