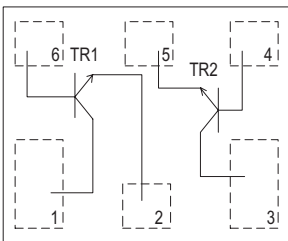
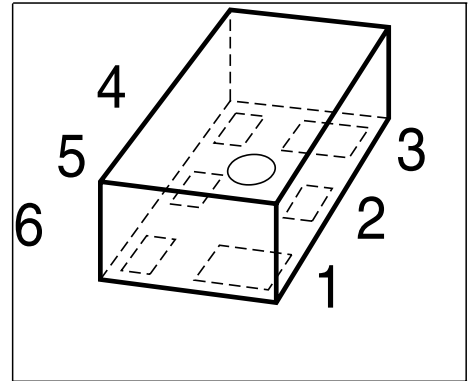


NPN Silicon RF Transistor

Preliminary data

- Low voltage/ low current operation
- For low noise amplifiers
- For oscillators up to 3.5 GHz and Pout > 10 dBm
- Low noise figure: TR1: 1.0dB at 1.8 GHz
TR2: 1.1 dB at 1.8 GHz
- Built in 2 Transistors (TR1: die as BFR360L3,
TR2: die as BFR380L3)



ESD: Electrostatic discharge sensitive device, observe handling precaution!

Type	Marking	Pin Configuration						Package
BFS386L6	FD	1=C1	2=E1	3=C2	4=B2	5=E2	6=B1	TSLP-6-1

Maximum Ratings

Parameter	Symbol	Value	Unit
Collector-emitter voltage	V_{CEO}		V
TR1		6	
TR2		6	
Collector-emitter voltage	V_{CES}		
TR1		15	
TR2		15	
Collector-base voltage	V_{CBO}		
TR1		15	
TR2		15	
Emitter-base voltage	V_{EBO}		
TR1		2	
TR2		2	
Collector current	I_C		mA
TR1		35	
TR2		80	

Maximum Ratings

Parameter	Symbol	Value	Unit
Base current	I_B		mA
TR1		4	
TR2		14	
Total power dissipation ¹⁾	P_{tot}		mW
$T_S \leq 101^\circ\text{C}$, TR1		210	
$T_S \leq 96^\circ\text{C}$, TR2		380	
Junction temperature	T_j		$^\circ\text{C}$
TR1		150	
TR2		150	
Ambient temperature	T_A		
TR1		-65 ... 150	
TR2		-65 ... 150	
Storage temperature	T_{stg}		
TR1		-65 ... 150	
TR2		-65 ... 150	

Thermal Resistance

Parameter	Symbol	Value	Unit
Junction - soldering point ²⁾	R_{thJS}		K/W
TR1		≤ 230	
TR2		≤ 140	

¹⁾ T_S is measured on the collector lead at the soldering point to the pcb

²⁾For calculation of R_{thJA} please refer to Application Note Thermal Resistance

Electrical Characteristics at $T_A = 25^\circ\text{C}$, unless otherwise specified

Parameter	Symbol	Values			Unit
		min.	typ.	max.	
DC Characteristics					
Collector-emitter breakdown voltage TR1, $I_C = 1\text{ mA}$, $I_B = 0$ TR2, $I_C = 1\text{ mA}$, $I_B = 0$	$V_{(BR)CEO}$	6	9	-	V
Collector-emitter cutoff current TR1, $V_{CE} = 15\text{ V}$, $V_{BE} = 0$ TR2, $V_{CE} = 15\text{ V}$, $V_{BE} = 0$	I_{CES}	-	-	10	μA
Collector-base cutoff current TR1, $V_{CB} = 5\text{ V}$, $I_E = 0$ TR2, $V_{CB} = 5\text{ V}$, $I_E = 0$	I_{CBO}	-	-	100	nA
Emitter-base cutoff current TR1, $V_{EB} = 1\text{ V}$, $I_C = 0$ TR2, $V_{EB} = 1\text{ V}$, $I_C = 0$	I_{EBO}	-	-	1	μA
DC current gain- TR1, $I_C = 15\text{ mA}$, $V_{CE} = 3\text{ V}$ TR2, $I_C = 40\text{ mA}$, $V_{CE} = 3\text{ V}$	h_{FE}	60	130	200	-

Electrical Characteristics at $T_A = 25^\circ\text{C}$, unless otherwise specified

Parameter	Symbol	Values			Unit
		min.	typ.	max.	
AC Characteristics (verified by random sampling)					
Transition frequency TR1, $I_C = 15\text{ mA}$, $V_{CE} = 3\text{ V}$, $f = 1\text{ GHz}$ TR2, $I_C = 40\text{ mA}$, $V_{CE} = 3\text{ V}$, $f = 1\text{ GHz}$	f_T	-	14	-	GHz
Collector-base capacitance TR1, $V_{CB} = 5\text{ V}$, $f = 1\text{ MHz}$, emitter grounded TR2, $V_{CB} = 5\text{ V}$, $f = 1\text{ MHz}$, emitter grounded	C_{cb}	-	0.3	-	pF
Collector emitter capacitance TR1, $V_{CE} = 5\text{ V}$, $f = 1\text{ MHz}$, base grounded TR2, $V_{CE} = 5\text{ V}$, $f = 1\text{ MHz}$, base grounded	C_{ce}	-	0.15	-	
Emitter-base capacitance TR1, $V_{EB} = 0,5\text{ V}$, $f = 1\text{ MHz}$, collector grounded TR2, $V_{EB} = 0,5\text{ V}$, $f = 1\text{ MHz}$, collector grounded	C_{eb}	-	0.43	-	

Electrical Characteristics at TA = 25°C, unless otherwise specified

Parameter	Symbol	Values			Unit
		min.	typ.	max.	
AC Characteristics (verified by random sampling)					
Noise figure TR1, $I_C = 3 \text{ mA}$, $V_{CE} = 3 \text{ V}$, $Z_S = Z_{Sopt}$, $f = 1.8 \text{ GHz}$ TR1, $I_C = 3 \text{ mA}$, $V_{CE} = 3 \text{ V}$, $Z_S = Z_{Sopt}$, $f = 3 \text{ GHz}$ TR2, $I_C = 8 \text{ mA}$, $V_{CE} = 3 \text{ V}$, $Z_S = Z_{Sopt}$, $f = 1.8 \text{ GHz}$ TR2, $I_C = 8 \text{ mA}$, $V_{CE} = 3 \text{ V}$, $Z_S = Z_{Sopt}$, $f = 3 \text{ GHz}$	F	-	1	-	dB
Power gain, maximum available ¹⁾ TR1, $I_C = 15 \text{ mA}$, $V_{CE} = 3 \text{ V}$, $f = 1.8 \text{ GHz}$ TR1, $I_C = 15 \text{ mA}$, $V_{CE} = 3 \text{ V}$, $f = 3 \text{ GHz}$ TR2, $I_C = 40 \text{ mA}$, $V_{CE} = 3 \text{ V}$, $f = 1.8 \text{ GHz}$ TR2, $I_C = 40 \text{ mA}$, $V_{CE} = 3 \text{ V}$, $f = 3 \text{ GHz}$	G_{ma}	-	14.5	-	
Transducer gain TR1, $I_C = 15 \text{ mA}$, $V_{CE} = 3 \text{ V}$, $f = 1.8 \text{ GHz}$ TR1, $I_C = 15 \text{ mA}$, $V_{CE} = 3 \text{ V}$, $f = 3 \text{ GHz}$ TR2, $I_C = 15 \text{ mA}$, $V_{CE} = 3 \text{ V}$, $f = 1.8 \text{ GHz}$ TR2, $I_C = 15 \text{ mA}$, $V_{CE} = 3 \text{ V}$, $f = 3 \text{ GHz}$	$ S_{21e} ^2$	-	12	-	
Third order intercept point at output ²⁾ TR1, $V_{CE} = 3 \text{ V}$, $I_C = 15 \text{ mA}$, $f = 1.8 \text{ GHz}$ TR2, $V_{CE} = 3 \text{ V}$, $I_C = 40 \text{ mA}$, $f = 1.8 \text{ GHz}$	IP_3	-	24	-	dBm
1dB Compression point TR1, $I_C = 15 \text{ mA}$, $V_{CE} = 3 \text{ V}$, $f = 1.8 \text{ GHz}$ TR2, $I_C = 40 \text{ mA}$, $V_{CE} = 3 \text{ V}$, $f = 1.8 \text{ GHz}$	P_{-1dB}	-	9	-	

$$^1G_{ma} = |S_{21e}| / |S_{12e}| (k - (k^2 - 1)^{1/2})$$

²IP3 value depends on termination of all intermodulation frequency components.
 Termination used for this measurement is 50Ω from 0.1 MHz to 6 GHz



LittleDiode supplies new, hard to find or obsolete electronic components and semiconductors all over the world.

With over two million different components listed you are sure to find the part you need.

Feel free to visit us today at our online store:

LittleDiode.com

Looking forward to providing you with the best possible service.