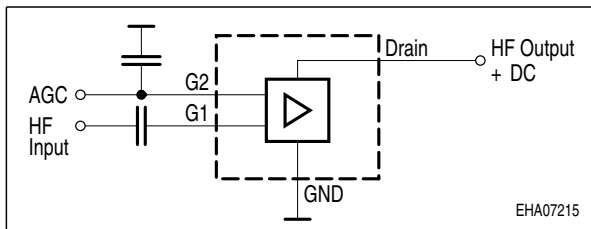
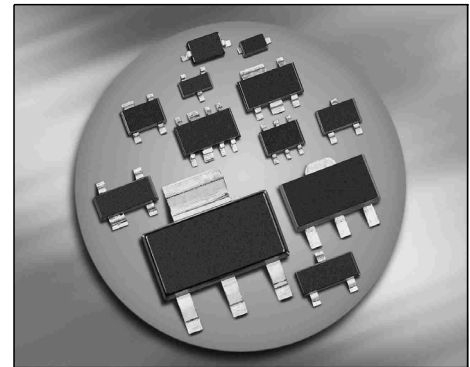


**Silicon N-Channel MOSFET Tetrode**

- For low noise, high gain controlled input stages up to 1 GHz
- Operating voltage 5V
- Integrated biasing network



**ESD: Electrostatic discharge sensitive device, observe handling precaution!**

Type	Package	Pin Configuration						Marking
		1=S	2=D	3=G2	4=G1	-	-	
BF1005	SOT143	1=S	2=D	3=G2	4=G1	-	-	MZs
BF1005R	SOT143R	1=D	2=S	3=G1	4=G2	-	-	MZs
BF1005W*	SOT343	1=D	2=S	3=G1	4=G2	-	-	MZ

\* on request only

**Maximum Ratings**

Parameter	Symbol	Value	Unit
Drain-source voltage	$V_{DS}$	8	V
Continuous drain current	$I_D$	25	mA
Gate 1/ gate 2-source current	$\pm I_{G1/2SM}$	10	
Gate 1 (external biasing)	$+V_{G1SE}$	3	V
Total power dissipation	$P_{tot}$		mW
$T_S \leq 76 \text{ }^\circ\text{C}$ , BF1005, BF1005R		200	
$T_S \leq 94 \text{ }^\circ\text{C}$ , BF1005W		200	
Storage temperature	$T_{stg}$	-55 ... 150	$^\circ\text{C}$
Channel temperature	$T_{ch}$	150	

**Note:**

**It is not recommended to apply external DC-voltage on Gate 1 in active mode.**

**Thermal Resistance**

Parameter	Symbol	Value	Unit
Channel - soldering point <sup>1)</sup> BF1005, BF1005R BF1005W	$R_{thchs}$	$\leq 370$ $\leq 280$	K/W

**Electrical Characteristics**

Parameter	Symbol	Values			Unit
		min.	typ.	max.	

**DC Characteristics**

Drain-source breakdown voltage $I_D = 650 \mu A, V_{G1S} = 0, V_{G2S} = 0$	$V_{(BR)DS}$	12	-	-	V
Gate1-source breakdown voltage $+I_{G1S} = 10 \text{ mA}, V_{G2S} = 0, V_{DS} = 0$	$+V_{(BR)G1SS}$	8	-	12	
Gate2 source breakdown voltage $\pm I_{G2S} = 10 \text{ mA}, V_{G1S} = 0, V_{DS} = 0$	$\pm V_{(BR)G2SS}$	8	-	13	
Gate1-source leakage current $V_{G1S} = 0, V_{G2S} = 6 \text{ V}$	$+I_{G1SS}$	-	100	-	$\mu A$
Gate 2 source leakage current $\pm V_{G2S} = 8 \text{ V}, V_{G1S} = 0, V_{DS} = 0$	$\pm I_{G2SS}$	-	-	50	nA
Drain current $V_{DS} = 5 \text{ V}, V_{G1S} = 0, V_{G2S} = 4 \text{ V}$	$I_{DSS}$	-	-	1.5	mA
Operating current (selfbiased) $V_{DS} = 5 \text{ V}, V_{G2S} = 4 \text{ V}$	$I_{DSO}$	8	10	16	
Gate2-source pinch-off voltage $V_{DS} = 5 \text{ V}, I_D = 100 \mu A$	$V_{G2S(p)}$	-	1	-	V

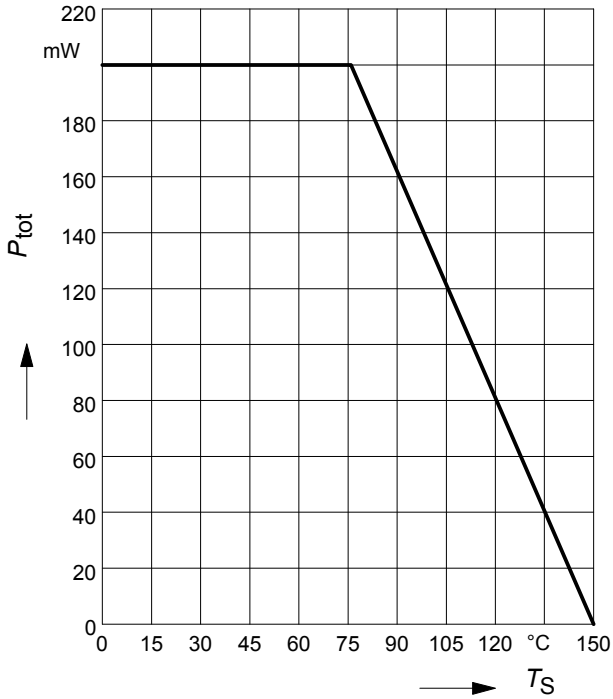
<sup>1)</sup>For calculation of  $R_{thJA}$  please refer to Application Note Thermal Resistance

**Electrical Characteristics**

Parameter	Symbol	Values			Unit
		min.	typ.	max.	
<b>AC Characteristics</b> (verified by random sampling)					
Forward transconductance $V_{DS} = 5\text{ V}, V_{G2S} = 4.5\text{ V}$	$g_{fs}$	20	24	-	mS
Gate1 input capacitance $V_{DS} = 5\text{ V}, V_{G2S} = 4\text{ V}, f = 1\text{ MHz}$	$C_{g1ss}$	-	2.1	2.5	pF
Output capacitance $V_{DS} = 5\text{ V}, V_{G2S} = 4\text{ V}, f = 100\text{ MHz}$	$C_{dss}$	-	1.3	-	
Power gain (self biased) $V_{DS} = 5\text{ V}, V_{G2S} = 4\text{ V}, f = 800\text{ MHz}$	$G_p$	17	19	-	dB
Noise figure $V_{DS} = 5\text{ V}, V_{G2S} = 4\text{ V}, f = 800\text{ MHz}$	$F$	-	1.6	2.5	dB
Gain control range $V_{DS} = 5\text{ V}, V_{G2S} = 4\text{ V} \dots 0\text{ V}, f = 800\text{ GHz}$	$\Delta G_p$	40	50	-	

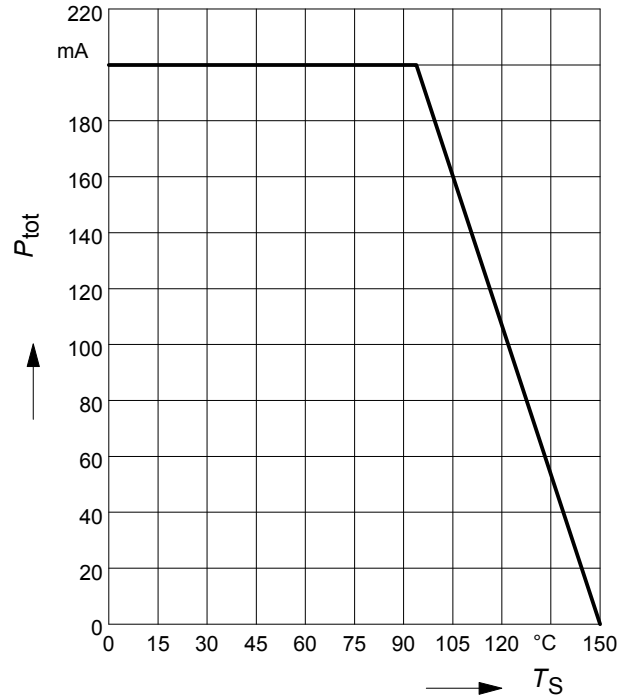
**Total power dissipation  $P_{tot} = f(T_S)$**

BF1005, BF1005R

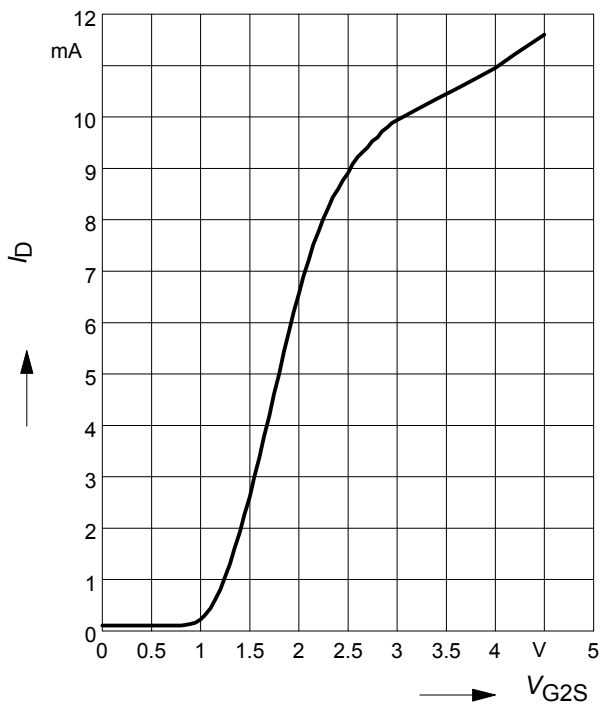


**Total power dissipation  $P_{tot} = f(T_S)$**

BF1005W

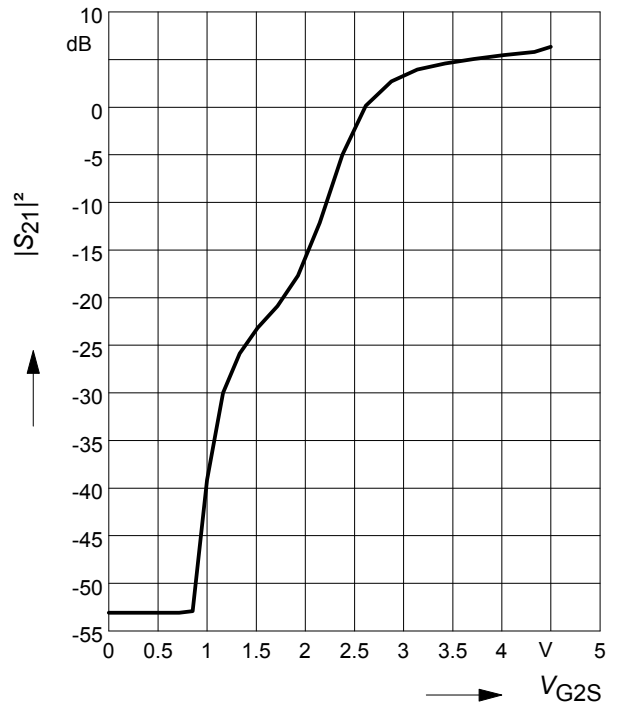


**Drain current  $I_D = f(V_{G2S})$**



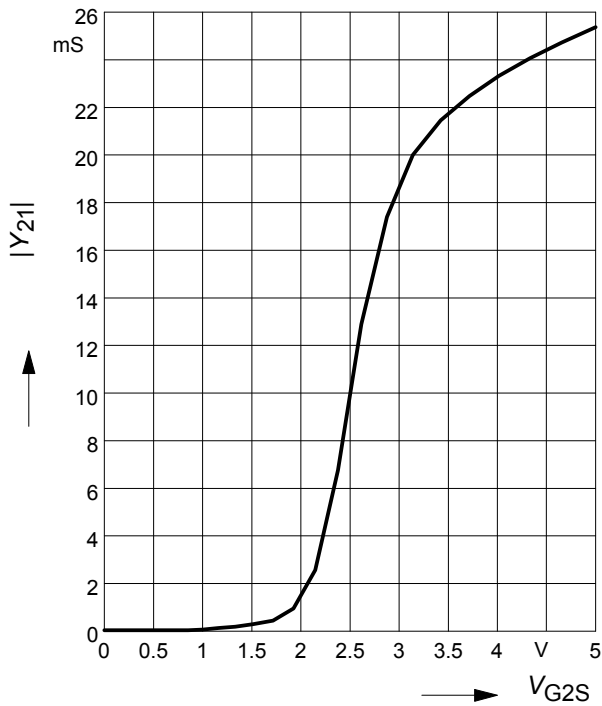
**Insertion power gain**

$|S_{21}|^2 = f(V_{G2S})$



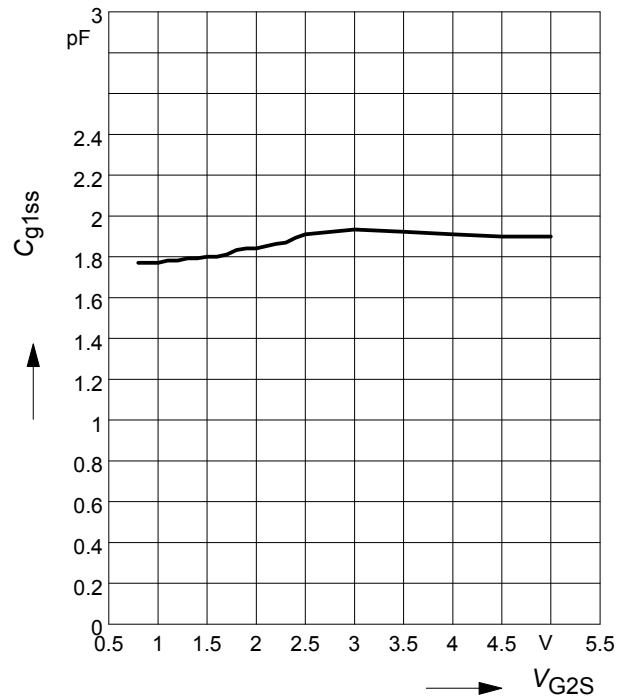
**Forward transfer admittance**

$|Y_{21}| = f(V_{G2S})$



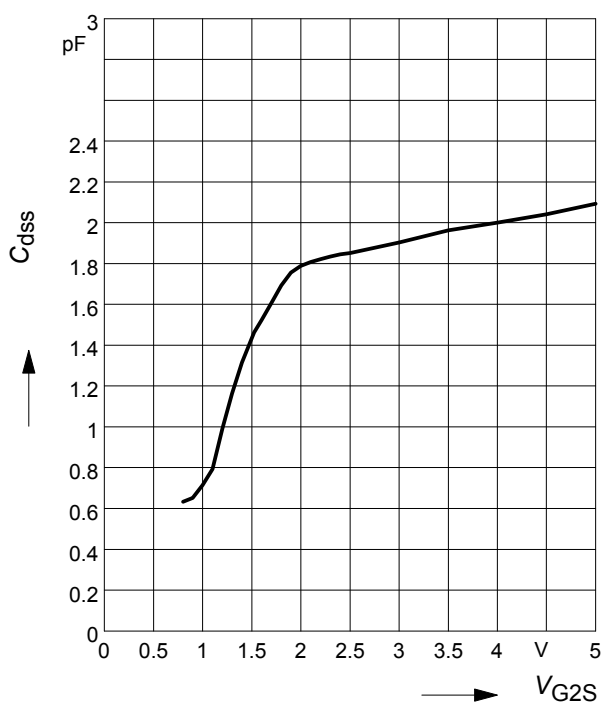
**Gate 1 input capacitance  $C_{g1ss} = f(V_{G2S})$**

f = 200MHz



**Output capacitance  $C_{dss} = f(V_{G2S})$**

f = 200MHz



This datasheet has been downloaded from:

[www.DatasheetCatalog.com](http://www.DatasheetCatalog.com)

Datasheets for electronic components.



LittleDiode supplies new, hard to find or obsolete electronic components and semiconductors all over the world.

With over two million different components listed you are sure to find the part you need.

Feel free to visit us today at our online store:

[LittleDiode.com](http://LittleDiode.com)

Looking forward to providing you with the best possible service.