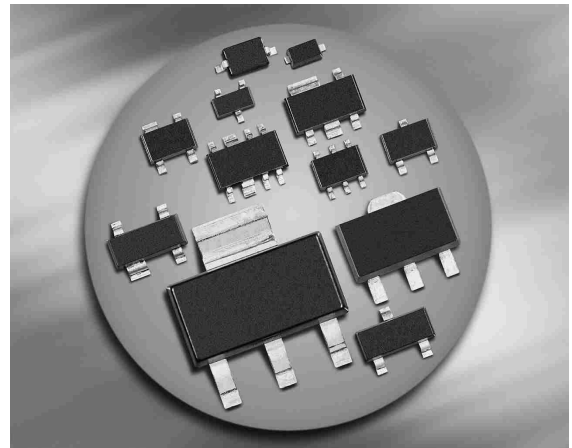
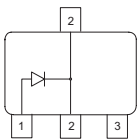


Silicon Switching Diodes

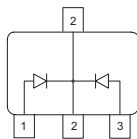
- Switching applications
- High breakdown voltage



BAW78D



BAW79D



Type	Package	Configuration	Marking
BAW78D	SOT89	single	GD
BAW79D	SOT89	common cathode	GH

Maximum Ratings at $T_A = 25^\circ\text{C}$, unless otherwise specified

Parameter	Symbol	Value	Unit
Diode reverse voltage	V_R	400	V
Peak reverse voltage	V_{RM}	400	
Forward current	I_F	1	A
Peak forward current	I_{FM}	1	
Surge forward current, $t = 1 \mu\text{s}$	I_{FS}	10	
Total power dissipation	P_{tot}		W
BAW78D, $T_S \leq 125^\circ\text{C}$		1	
BAW79D, $T_S \leq 115^\circ\text{C}$		1	
Junction temperature	T_j	150	$^\circ\text{C}$
Storage temperature	T_{stg}	-65 ... 150	

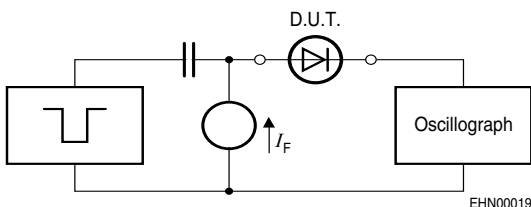
Thermal Resistance

Parameter	Symbol	Value	Unit
Junction - soldering point ¹⁾	R_{thJS}		K/W
BAW78D		≤ 25	
BAW79D		≤ 35	

¹For calculation of R_{thJA} please refer to Application Note Thermal Resistance

Electrical Characteristics at $T_A = 25^\circ\text{C}$, unless otherwise specified

Parameter	Symbol	Values			Unit
		min.	typ.	max.	
DC Characteristics					
Breakdown voltage $I_{(BR)} = 100 \mu\text{A}$	$V_{(BR)}$	400	-	-	V
Reverse current $V_R = 400 \text{ V}$ $V_R = 400 \text{ V}, T_A = 150^\circ\text{C}$	I_R	-	-	1 50	μA
Forward voltage $I_F = 1 \text{ A}$ $I_F = 2 \text{ A}$	V_F	- -	- -	1.6 2	V
AC Characteristics					
Diode capacitance $V_R = 0 \text{ V}, f = 1 \text{ MHz}$	C_T	-	10	-	pF
Reverse recovery time $I_F = 200\text{mA}, I_R = 200\text{mA}$, measured at $I_R = 20\text{mA}$ $R_L = 100\Omega$	t_{rr}	-	1	-	μs

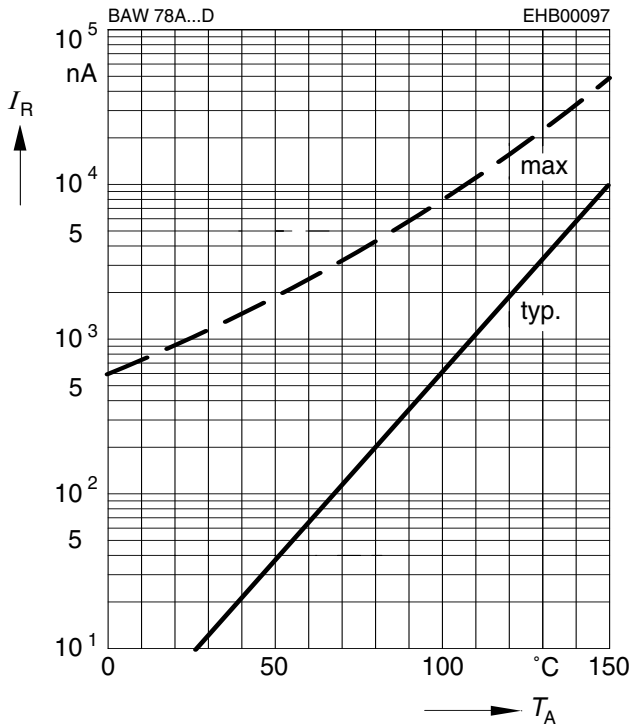
Test circuit for reverse recovery time


Puls generator: $t_p = 10\mu\text{s}$, $D = 0.05$,
 $t_r = 0.6\text{ns}$, $R_i = 50\Omega$

Oscillograp: $R = 50\Omega$, $t_r = 0.35\text{ns}$
 $C \leq 1\text{pF}$

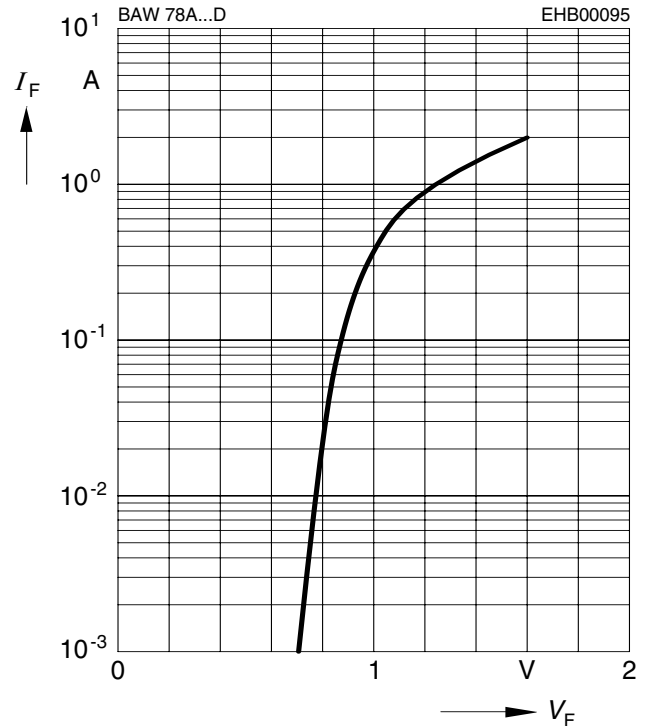
Reverse current $I_R = f(T_A)$

$V_R = 400V$

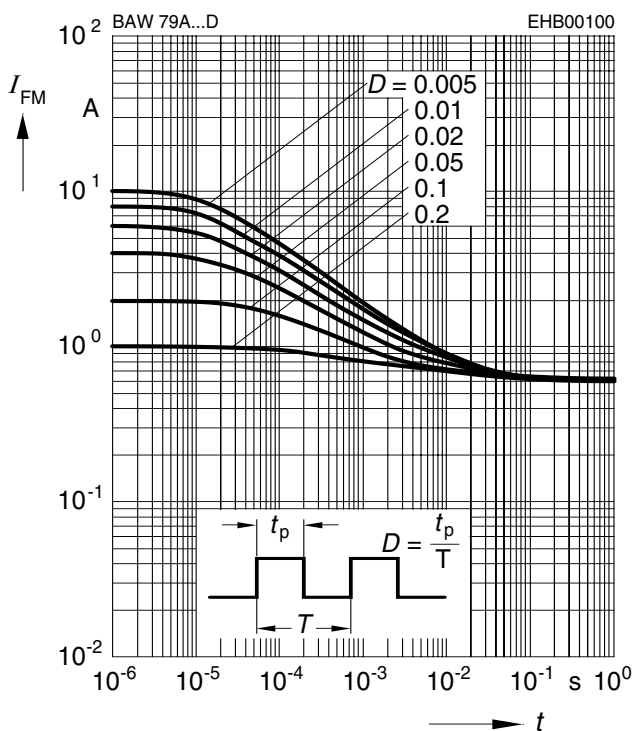


Forward current $I_F = f(V_F)$

$T_A = 25^\circ C$

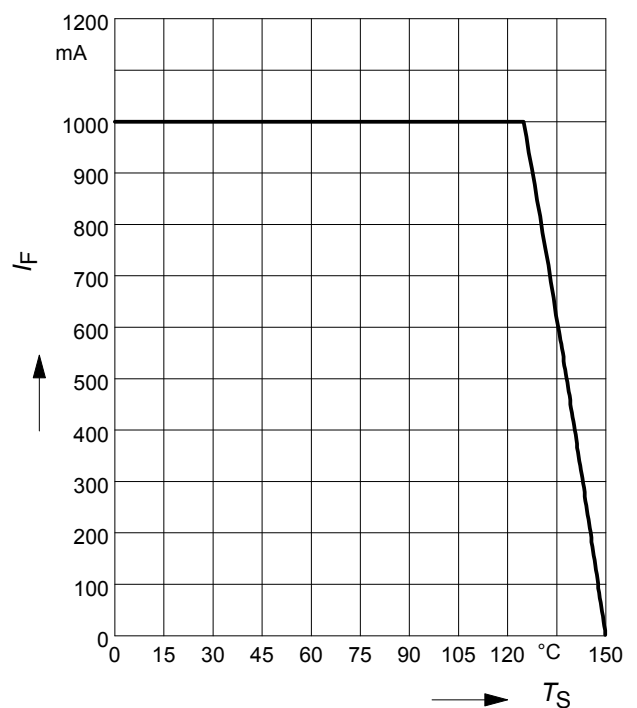


Peak forward current $I_{FM} = f(t_p)$



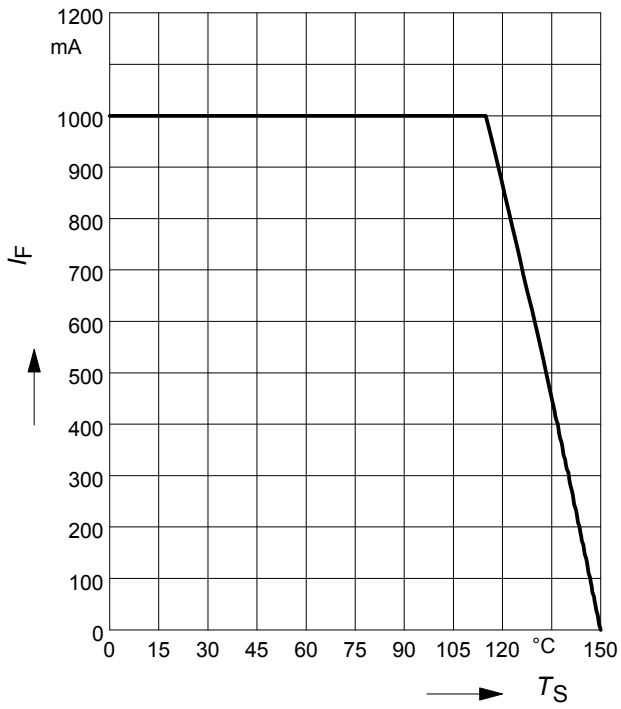
Forward current $I_F = f(T_S)$

BAW78D



Forward current $I_F = f(T_S)$

BAW79D



This datasheet has been downloaded from:

www.DatasheetCatalog.com

Datasheets for electronic components.



LittleDiode supplies new, hard to find or obsolete electronic components and semiconductors all over the world.

With over two million different components listed you are sure to find the part you need.

Feel free to visit us today at our online store:

LittleDiode.com

Looking forward to providing you with the best possible service.