

**VERY FAST LOAD TRANSIENT RESPONSE
WITH THE NEW LPR30 APPLICATION**

INTRODUCTION

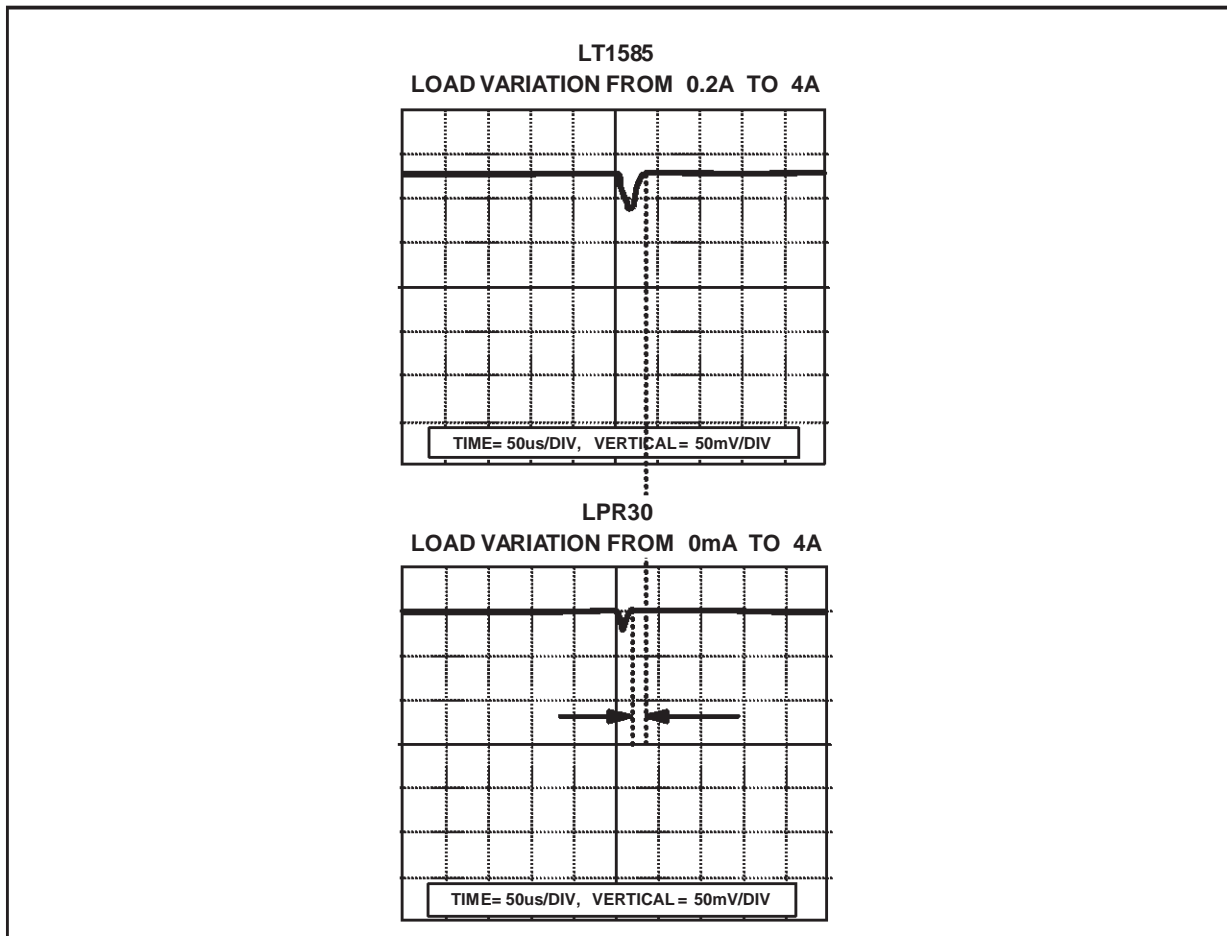
Some applications requires high performances power supply characteristics in terms of fast recover to properly work. In particular it happen in the sequential system, where if an unexpected and high current absorption happens the output voltage go down due to the slow power supply response. If in the system there are microprocessor or counters, functionality problems could happen. Some companies suggest integrated solutions, but the performances are not optimum due to recovery times around 40µs, with output current medium or low and high dropout voltage (as it is shown in figure 1, LT1585 performances).

Using the LPR30 it is easy to realize power supply system with improved performances thanks to the high flexibility given by this device . In fact using an external Power Mosfet , the ctm can use components with very low R_{LOAD}.

In this way it is possible to supply current more than 10A, with lower dropout voltage.

Another important feature of the LPR30 is the un compensated internal ERROR AMPLIFIER; which allows for realization of an optimized external compensated network in terms of faster response.

Figure 1. LT1585 and LPR30 Load Variations (R₂ = 50Ω, Cout = 220µF).



AN964 APPLICATION NOTE

CIRCUIT DESCRIPTION

The electric schematic is shown in Figure 2.

Figure 2. Electric Schematic.

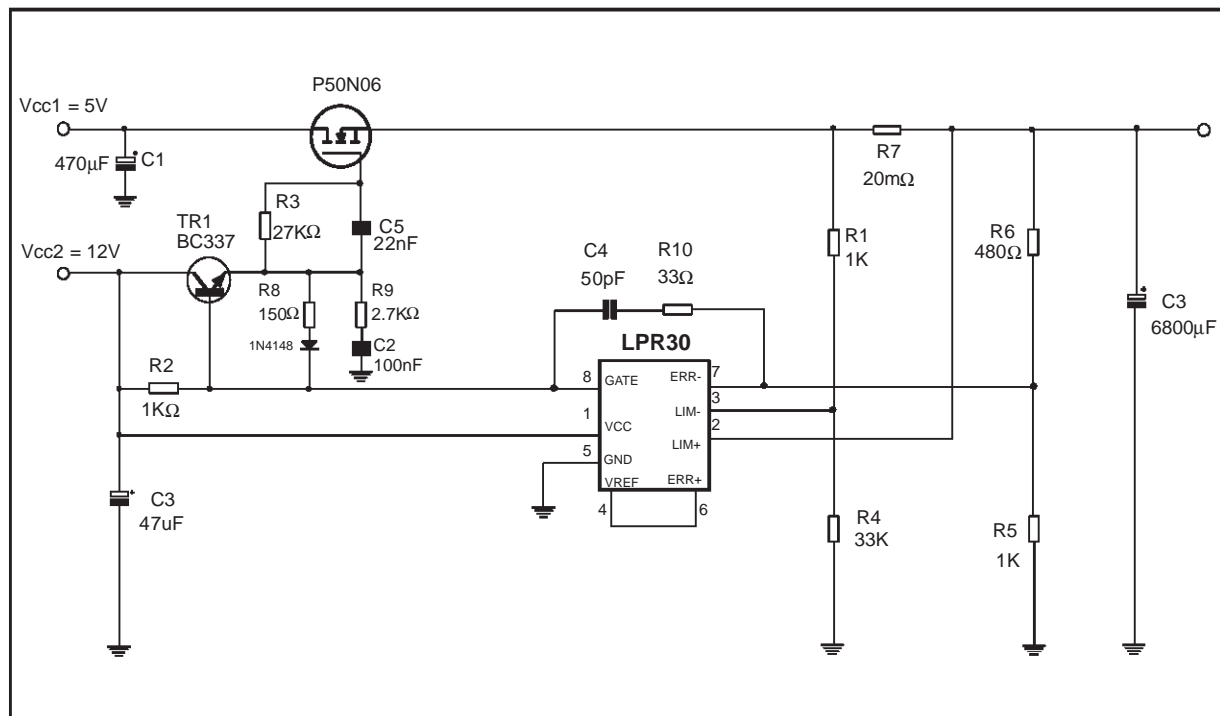


Table 1. Components description

Resistor	Value	Capacitor	Value
R1	1k Ω	C1	470 μ F
R2	1k Ω	C2	100nF
R3	27 Ω	C3	6800mF
R4	33k Ω	C4	50pF
R5	1k Ω	C5	22nF
R6	480 Ω	C6	47mF
R7	20m Ω		
R8	150 Ω		
R9	2.7k Ω		
R10	33 Ω		

In the circuit there are two different compensation ;

- the first one implements the current limit amplifier,
- the second one implements the error amplifier. The first compensation is given by R3, R8, R9, C2, D1 and TR1 .

The transistor TR1 is utilized to decrease the R2 resistor value; consequently it follows that there is a reduction of the total response time.

The second compensation is given by R10, C4 and C3.

In particular C3 in combination with R_{LOAD} constitutes the domination pole. It is important that the "constant time" associated with $C3 \cdot R_{LOAD}$ is $\tau \geq 1.8ms$. So if the ctm needs a $V_{out} \geq 3.3V$ and $I_{OUTMAX} =$

15A it follows :

$$R_{LOADMIN} = \frac{V_{out}}{I_{OUTmax}}$$

then

$$\frac{3.3}{15} = 0.22\Omega$$

and

$$\frac{C3 > (1.8 \cdot 10^{-3})}{R_{LOADmin}} 8.200mF$$

R10 and C4 decrease the amplifier error Gain at the high frequencies, while C5 improves the fast response.

Here below in figure n. 3 is shown the typical application demoboard.

HINTS...

In order to allow the complete Power MOSFET driving , V2 must be greater than $V_{OUT} + V_{GSat}$. R1 and R4 value are calculated in according to I_{OUTMAX} and $I_{OUTC.C}$ performances. Looking to the power dissipated at point A is:

$$P_{DA} = (V_{in} - V_{out} - R_{sense} \cdot I_{max}) \cdot I_{max}.$$

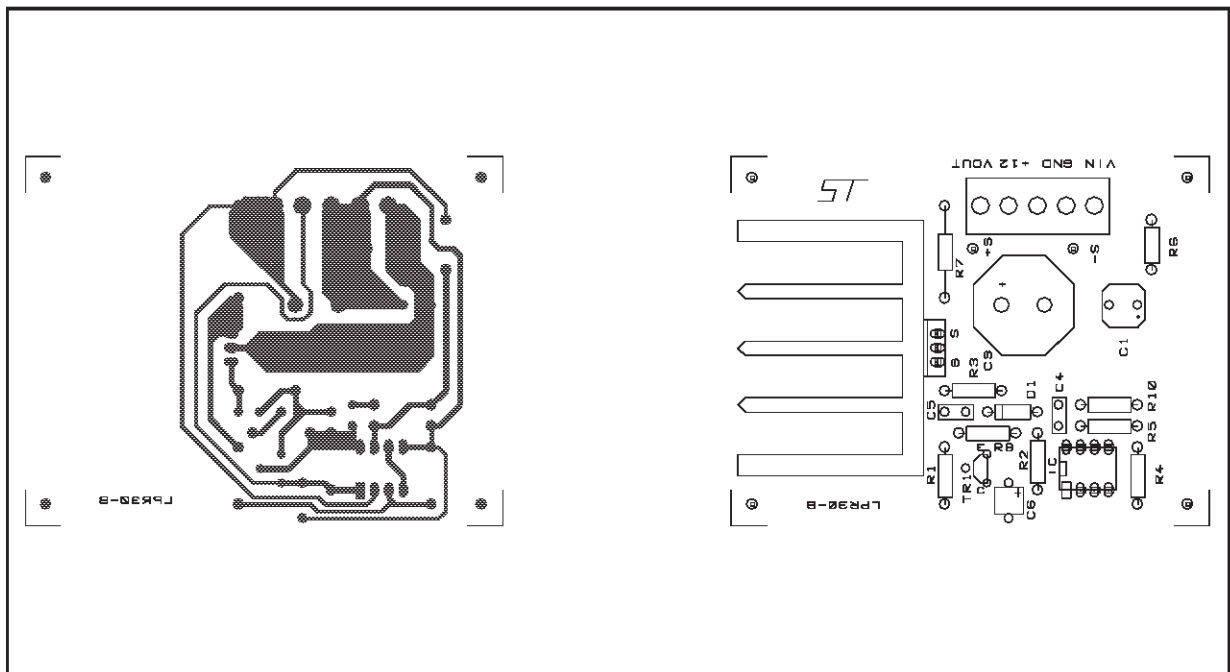
While the power dissipated at point B is

$$P_{DB} = (V_{in} - R_{sense} \cdot I_{sc}) \cdot I_{sc} \cong V_{in} \cdot I_{sc}.$$

In the operating mode it is good choice to impose $P_{DB} \leq P_{DA}$ to avoid a larger heatsink dimensioning in short circuit condition.If we let $P_{DA} = P_{DB}$, we obtain:

$$I_{sc} = \frac{(V_{in} - V_{out} - R_{sense} \cdot I_{max}) \cdot I_{max}}{V_{in}}$$

Figure 3 . Typical Application Demoboard.



AN964 APPLICATION NOTE

Figure 4 reports the foldback limitation characteristic. In some applications it is not possible to impose $P_{DB} \leq P_{DA}$ because a high ratio I_{max}/I_{sc} implies an higher drop on the R_{sense} .

In fact :

$$R_{sense} \cdot I_{sc} = 50 \cdot 10^{-3} \cdot \frac{R1 + R4}{R4} > 50mV$$

$$\frac{R_{sense} > 50mV}{I_{sc}}$$

and then

$$R_{sense} \cdot I_{max} = V_{sense} > 50mV \cdot \left(\frac{I_{max}}{I_{sc}} \right)$$

So the starting point to determinate all the components to be used is to impose the dissipation in short circuit condition :

$$P_{D-B} = (V_{in} - R_{sense} \cdot I_{sc}) \cdot I_{sc} \cong V_{in} \cdot I_{sc} > V_{in} \cdot 50mV \cdot I_{max} / V_{sense}$$

and then

$$1) \quad V_{sense} > 50mV \cdot \left[\frac{(V_{in} \cdot I_{max})}{P_{D-B}} \right]$$

$$2) \quad R_{sense} = \frac{V_{sense}}{I_{max}}$$

$$3) \quad R_{ONmax} \leq \left[\frac{(V_{drop} - V_{sense})}{I_{max}} \right] \text{ and so the PowerMOSFET.}$$

4) Now we can calculate the R1 and R4 resistors. $(R1 + R4) = \frac{V_{out} + V_{sense}}{V_{out} + 50mV} - 1$ and so imposing the R1 we can determinate the R4

$$5) \quad I_{sc} = \left(\frac{50mV}{R_{sense}} \right) \cdot \left[\frac{(R1 + R4)}{R4} \right]$$

PERFORMANCES

Figure 5 shows the Load Transient Response of the power supply when the load increases from 0A to 10A .

It is possible to see response times extremely short (around 1 μ s), even if we start from no-load condition. Consequently the Output Voltage variations are extremely reduced. It is possible to reduce this Load Variation even further by increasing the Output Capacitor (C3) value.

Figure 4.

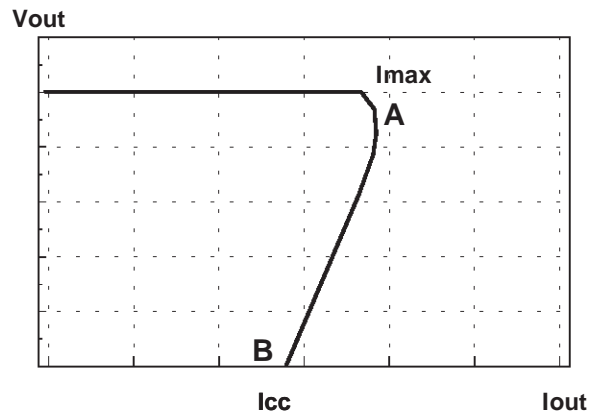
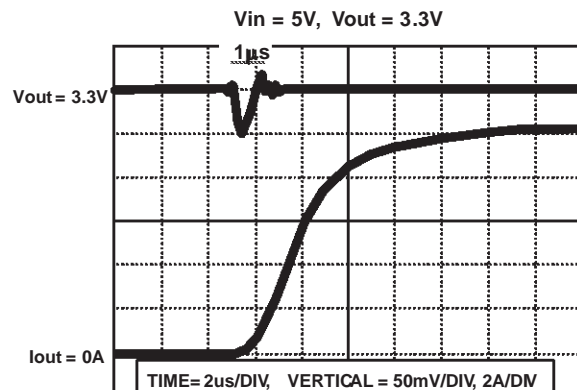


Figure 5.

LOAD VARIATION FROM 0A TO 10A



Information furnished is believed to be accurate and reliable. However, SGS-THOMSON Microelectronics assumes no responsibility for the consequences of use of such information nor for any infringement of patents or other rights of third parties which may result from its use. No license is granted by implication or otherwise under any patent or patent rights of SGS-THOMSON Microelectronics. Specification mentioned in this publication are subject to change without notice. This publication supersedes and replaces all information previously supplied. SGS-THOMSON Microelectronics products are not authorized for use as critical components in life support devices or systems without express written approval of SGS-THOMSON Microelectronics.

© 1997 SGS-THOMSON Microelectronics – Printed in Italy – All Rights Reserved

SGS-THOMSON Microelectronics GROUP OF COMPANIES

Australia - Brazil - Canada - China - France - Germany - Italy - Japan - Korea - Malaysia - Malta - Morocco - The Netherlands -
Singapore - Spain - Sweden - Switzerland - Taiwan - Thailand - United Kingdom - U.S.A.



LittleDiode supplies new, hard to find or obsolete electronic components and semiconductors all over the world.

With over two million different components listed you are sure to find the part you need.

Feel free to visit us today at our online store:

LittleDiode.com

Looking forward to providing you with the best possible service.