

# AN6166NK

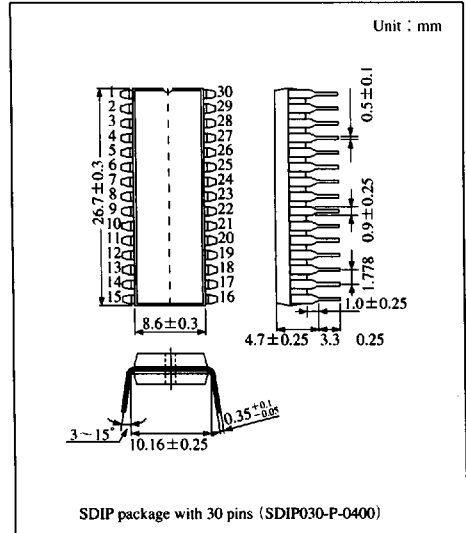
## Cordless Telephone Speech Network IC

### Overview

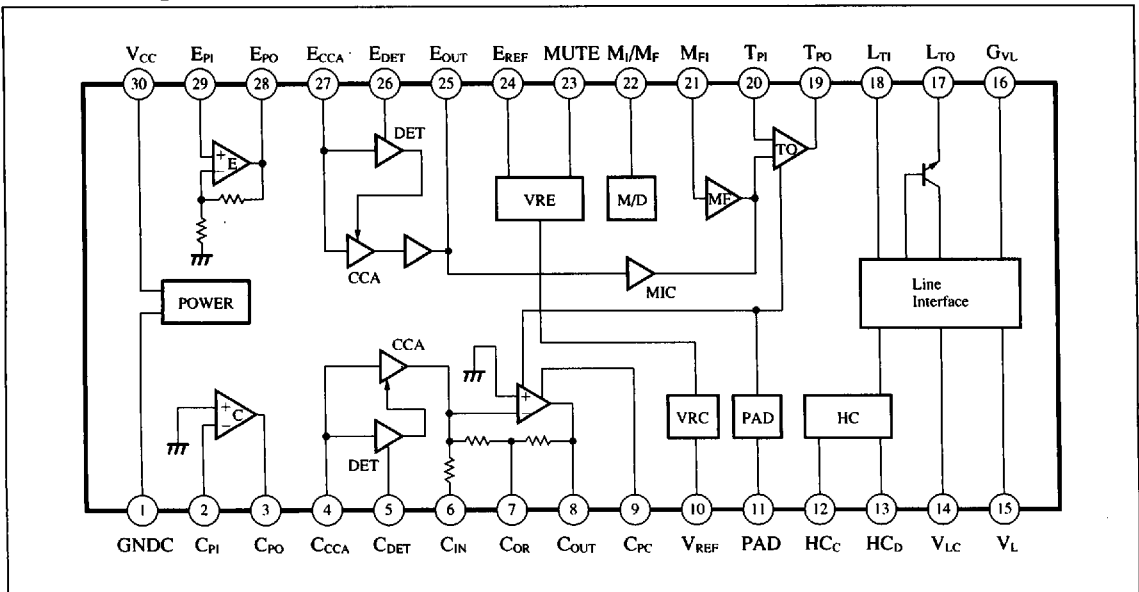
The AN6166NK is a speech network IC for the base set of a cordless telephone. It incorporates a line interface (speech network), a compander circuit, and an automatic hold-reset circuit. With a minimal number of external components, it can perform all the functions of the base set of a cordless telephone.

### Features

- The compressor/expander circuit incorporates preamplifiers to make level and frequency adjustments easier.
- Incorporates a MUTE function to make the compander circuit independent of the speech network.
- The speech network consumes minimal current, operates on low voltage, and supports telephone branching.
- Incorporates an MF amplifier, an automatic-pad circuit, and an automatic hold-reset circuit, making the required number of external components minimal.



### Block Diagram



■ 6932852 0013070 91T ■

### ■ Absolute Maximum Ratings (Ta=25°C)

Parameter	Symbol	Rating	Unit
Supply voltage (1)	V <sub>CC</sub>	7.5	V
Supply voltage (2)	V <sub>L</sub>	10	V
Supply current	I <sub>L</sub>	150	mA
Power dissipation (Ta = 75°C)	P <sub>D</sub>	1,070	mW
Operating ambient temperature	T <sub>opr</sub>	-20 to +75	°C
Storage temperature	T <sub>stg</sub>	-55 to +150	°C

### ■ Recommended Operating Range (Ta=25°C)

Parameter	Symbol	Range
Operating supply voltage range (1)	V <sub>CC</sub>	2.5 to 4.5V
Operating supply voltage range (2)	V <sub>L</sub>	1 to 8V
Operating supply current	I <sub>L</sub>	3 to 120mA

### ■ Electrical Characteristics (Ta=25°C)

Parameter	Symbol	Condition	min	typ	max	Unit
<b>Compressor</b>						
Preamplifier voltage gain	G <sub>PC</sub>	RA/RB = 51kΩ/5.1kΩ, V <sub>in</sub> = -40dBV	19	20	21	dB
Preamplifier output voltage	V <sub>PC</sub>	RA/RB = 51kΩ/5.1kΩ, THD = 5%, R <sub>L</sub> = 1kΩ	-10	-7	—	dBV
Reference output	V <sub>ORC</sub>	V <sub>IRC</sub> = -20dBV (Ref. output)	-13	-11	-9	dBV
Δ Gain (1)	ΔC <sub>1</sub>	V <sub>in</sub> = V <sub>IRC</sub> - 20dB, ΔC <sub>1</sub> = V <sub>ORC</sub> - V <sub>OC1</sub>	-11	-10	-9	dB
Δ Gain (2)	ΔC <sub>2</sub>	V <sub>in</sub> = V <sub>IRC</sub> - 40dB, ΔC <sub>2</sub> = V <sub>ORC</sub> - V <sub>OC2</sub>	-22	-20	-19	dB
Distortion	THD <sub>C</sub>	V <sub>in</sub> = -20dBV	—	0.5	1	%
Maximum output voltage	V <sub>OCM</sub>	THD = 5%, R <sub>L</sub> = 1kΩ	-10	-7	—	dBV
Output noise voltage	V <sub>NOC</sub>	R <sub>g</sub> = 2kΩ, with a CCITT filter	—	-60	55	dBV
Receiver automatic PAD	ΔP <sub>C</sub>	V <sub>in</sub> = -20dBV, I <sub>L</sub> = 20 to 100mA	-3.5	-2	-1	dB
<b>Expander</b>						
Preamplifier voltage gain	G <sub>PE</sub>	V <sub>in</sub> = -20dBV	10	12	14	dB
Preamplifier output voltage	V <sub>PE</sub>	THD = 5%, R <sub>L</sub> = 1kΩ	-10	-7	—	dBV
Reference output	V <sub>ORE</sub>	V <sub>IRE</sub> = -20dBV (Ref. output)	-32	-29	-26	dBV
Δ Gain (1)	ΔE <sub>1</sub>	V <sub>in</sub> = V <sub>IRE</sub> - 10dB, ΔE <sub>1</sub> = V <sub>ORE</sub> - V <sub>OE1</sub>	-21	-20	-19	dB
Δ Gain (2)	ΔE <sub>2</sub>	V <sub>in</sub> = V <sub>IRE</sub> - 20dB, ΔE <sub>2</sub> = V <sub>ORE</sub> - V <sub>OE2</sub>	-41.5	-40	-38.5	dB
Distortion	THD <sub>E</sub>	V <sub>in</sub> = -20dBV	—	0.5	1	%
Maximum output voltage	V <sub>OFM</sub>	THD = 5%, R <sub>L</sub> = 1kΩ	-10	-7	—	dBV
Output noise voltage	V <sub>NOE</sub>	R <sub>g</sub> = 2kΩ, with a CCITT filter	—	-95	-90	dBV
<b>Speech network</b>						
Line voltage (1)	V <sub>L1</sub>	I <sub>L</sub> = 20mA	2.5	3.5	4	V
Line voltage (2)	V <sub>L2</sub>	I <sub>L</sub> = 100mA	6.5	8	9.5	V
MIC amp. voltage gain	G <sub>MIC</sub>	V <sub>in</sub> (Pin <sup>25</sup> ) = -30dBV, MUTE - ON	22	24	26	dB
MIC amp. distortion	THD <sub>M</sub>	V <sub>in</sub> (Pin <sup>25</sup> ) = -30dBV, MUTE - ON	—	0.5	2	%
MIC amp. automatic PAD	ΔP <sub>M</sub>	V <sub>in</sub> (Pin <sup>25</sup> ) = -30dBV, I <sub>L</sub> = 20 to 100mA	-6	-4.5	-3	dBV

6932852 0013071 856

### ■ Electrical Characteristics (Cont.) (Ta=25°C)

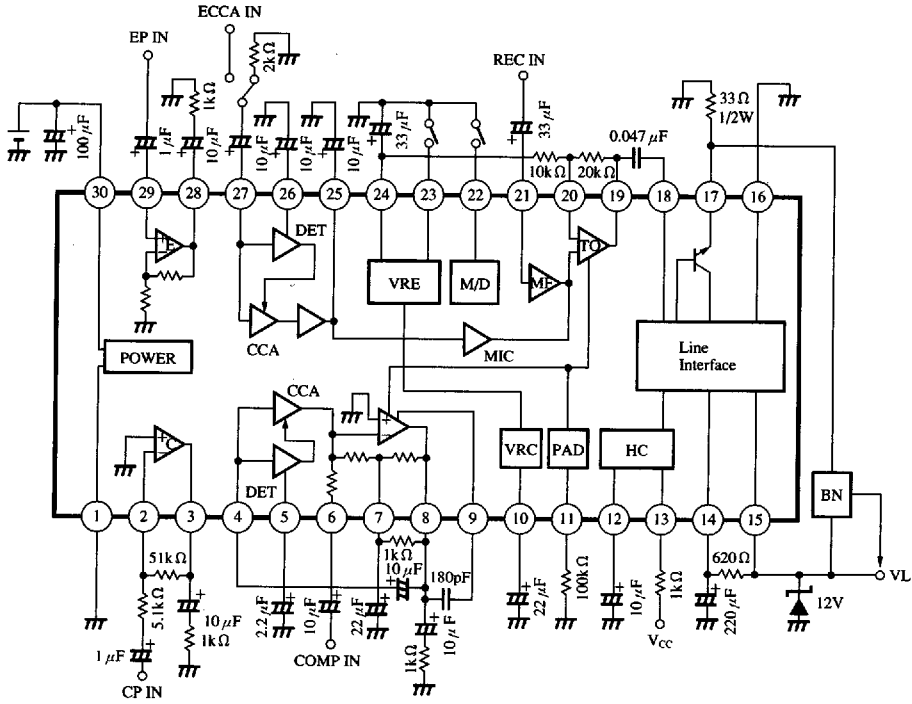
Parameter	Symbol	Condition	min	typ	max	Unit
<b>Speech network (Cont.)</b>						
MIC amp. max output voltage	V <sub>OM</sub>	THD=5%	3	—	—	dBV
MIC amp. output noise voltage	V <sub>NOM</sub>	MIC input pin=OPEN, MUTE ON	—	-60	-55	dBV
DTMF amp. voltage gain	G <sub>MF</sub>	V <sub>in</sub> (Pin②) = -40dBV, MI/MF ON	36	38	40	dB
DTMF amp. gain	THD <sub>MF</sub>	V <sub>in</sub> (Pin②) = -40dBV, MI/MF ON	—	0.2	1.5	%
DTMF amp. automatic PAD	ΔP <sub>MF</sub>	V <sub>in</sub> (Pin②) = -40dBV, I <sub>L</sub> =20 to 100mA	-6	-4.5	-3	dB
DTMF amp. max output voltage	V <sub>OMF</sub>	THD=5%	3	—	—	dBV
<b>Power supply</b>						
Current consumption	I <sub>CC</sub>	V <sub>CC</sub> =3V, no signal	2	3	6	mA
Sink current at the hold-reset pin	I <sub>HC</sub>	20 hold-reset signal ON	0.5	—	—	mA

### ■ Pin Descriptions

Pin No.	Symbol	Description	Pin No.	Symbol	Description
1	GNDC	Compander GND	16	G <sub>VL</sub>	Line GND
2	C <sub>PI</sub>	COMP preamp. input	17	L <sub>TO</sub>	Line transmission
3	C <sub>PO</sub>	COMP preamp. output	18	L <sub>TI</sub>	Line transmission signal input
4	C <sub>CCA</sub>	COMP-CCA input	19	T <sub>PO</sub>	Speech preamp. output
5	C <sub>DET</sub>	COMP detection	20	T <sub>PI</sub>	Speech preamp. input
6	C <sub>IN</sub>	COMP signal input	21	M <sub>FI</sub>	DTMF signal input
7	C <sub>OR</sub>	COMP output V <sub>REF</sub>	22	M <sub>I/MF</sub>	MIC/DTMF switching
8	C <sub>OUT</sub>	COMP output	23	MUTE	Compander MUTE
9	C <sub>PC</sub>	COMP phase adjustment	24	E <sub>REF</sub>	EXP-V <sub>REF</sub>
10	V <sub>REF</sub>	COMP-V <sub>REF</sub>	25	E <sub>OUT</sub>	EXP output
11	PAD	PAD adjustment	26	E <sub>DET</sub>	EXP detection
12	H <sub>CC</sub>	Hold adjustment	27	E <sub>CCA</sub>	EXP-CCA input
13	H <sub>CO</sub>	Hold-reset signal output	28	E <sub>PO</sub>	EXP preamp. output
14	V <sub>LC</sub>	Line regulated power supply	29	E <sub>PI</sub>	EXP preamp. input (+)
15	V <sub>L</sub>	Line power supply	30	V <sub>CC</sub>	Supply voltage

 ICs for  
Telephone

■ Application Circuit



■ 6932852 0013073 629 ■

This datasheet has been downloaded from:

[www.DatasheetCatalog.com](http://www.DatasheetCatalog.com)

Datasheets for electronic components.



LittleDiode supplies new, hard to find or obsolete electronic components and semiconductors all over the world.

With over two million different components listed you are sure to find the part you need.

Feel free to visit us today at our online store:

[LittleDiode.com](http://LittleDiode.com)

Looking forward to providing you with the best possible service.