

AN2125FHS

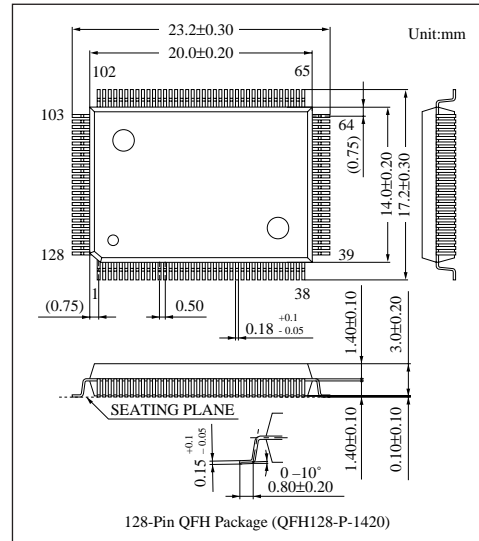
NTSC/PAL signal processor IC for 510H color CCD camera

■ Overview

The AN2125FHS is a CCD camera video signal processor IC featuring luminance and color-difference signals processing, and encoding, Y/C mixing, 75-Ω driver output, and subcarrier generation. It also includes an automatic white balance control circuit, an operational amplifier for AGC, a DAC for adjustment, and a circuit that automatically reads the EEPROM at the instance of power-on. Together with only an external EEPROM, you can make all signal processing system without a microprocessor.

■ Features

- Supports 510H CCDs (250,000 pixels)
- Compatible with both NTSC and PAL
- Built-in FH lock system for subcarrier generation
- Built-in automatic EEPROM read-in circuit at power-on instance.
- Built-in adjustment DAC (8 bits, 32 channels)
- Built-in external synchronization circuit
- Built-in comparator to provide for an electronic iris



■ Absolute Maximum Ratings

Parameter	Symbol	Rating	Unit
Supply voltage	V_{CC}	$V_{CC1}=5.5$	V
Supply current	I_{CC}	$I_{CC1(156)}=170$	mA
Power dissipation ^{Note 2)}	P_D	876	mW
Operating ambient temperature ^{Note 1)}	T_{opr}	-20 to +70	°C
Storage temperature ^{Note 1)}	T_{stg}	-55 to +150	°C

Note 1) $T_a=25^{\circ}\text{C}$ for other than operating ambient and storage temperatures.

Note 2) Allowable power dissipation of the package at $T_a=70^{\circ}\text{C}$.

■ Recommended Operating Range ($T_a=25^{\circ}\text{C}$)

Parameter	Symbol	Range
Operating supply voltage range	V_{CC}	4.5 to 5.1V



LittleDiode supplies new, hard to find or obsolete electronic components and semiconductors all over the world.

With over two million different components listed you are sure to find the part you need.

Feel free to visit us today at our online store:

LittleDiode.com

Looking forward to providing you with the best possible service.