



# AN1352 APPLICATION NOTE

## A LNA OPTIMIZED FOR HIGH IP3<sub>out</sub> AT 1.9GHz USING THE NPN Si START420 TRANSISTOR

F. Caramagno - G. Privitera

Data at 1.9GHz (3V, 20mA)

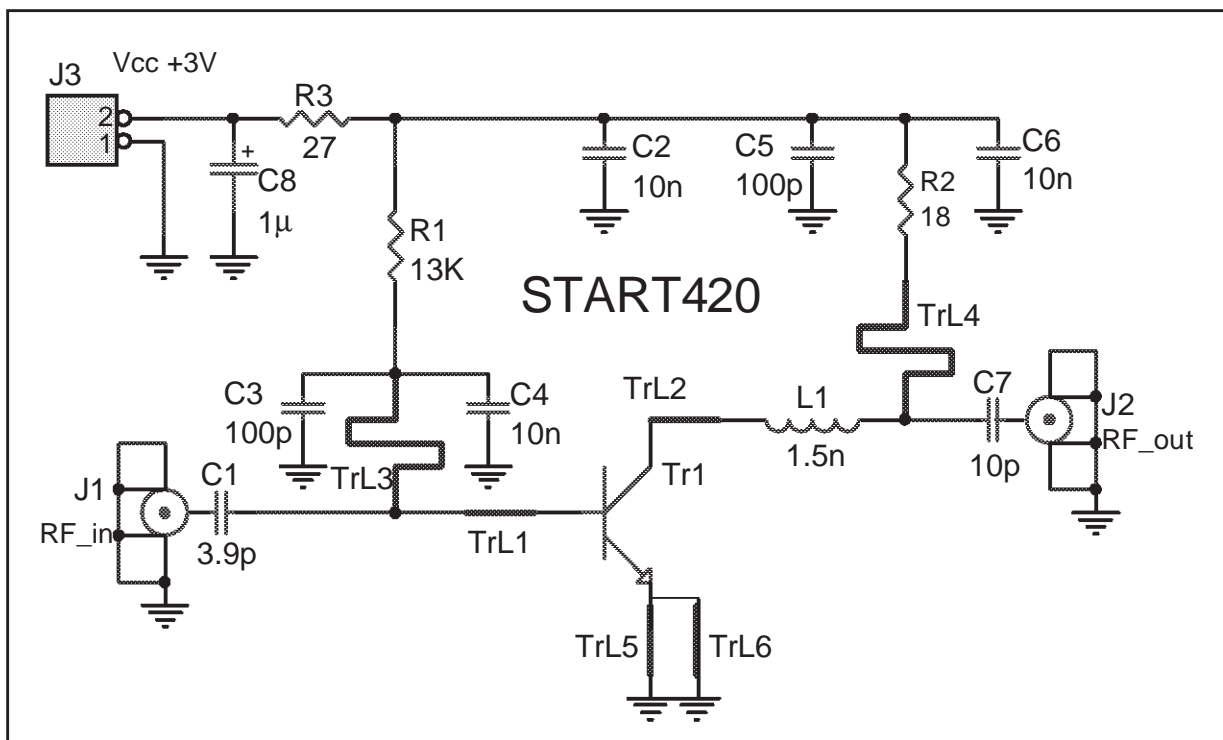
Gain = 18dB, IP3<sub>out</sub> = 23dBm, N<sub>F</sub> = 1.9dB, R<sub>Lin/out</sub> > 13dB

### 1. INTRODUCTION.

START420 is a product of the START Family (ST Advanced Radio frequency Transistor). It is a high performance silicon bipolar transistor housed in the ultra miniature 4-lead SC-70 (SOT-343) surface mount plastic package. The amplifier is designed for use with 30mils thickness FR-4 printed circuit board material. The amplifier application circuit has been optimized to achieve a good compromise among IP3, noise figure and return loss at 1.9GHz, with V<sub>ce</sub>=2V and I<sub>c</sub>=20mA. The amplifier has 18dB of Gain, 1.9dB of Noise Figure a Input and Output Return Loss >13dB and an output IP3 of +23dBm (1.9GHz, 3V, 20mA).

### 2. LNA DESIGN.

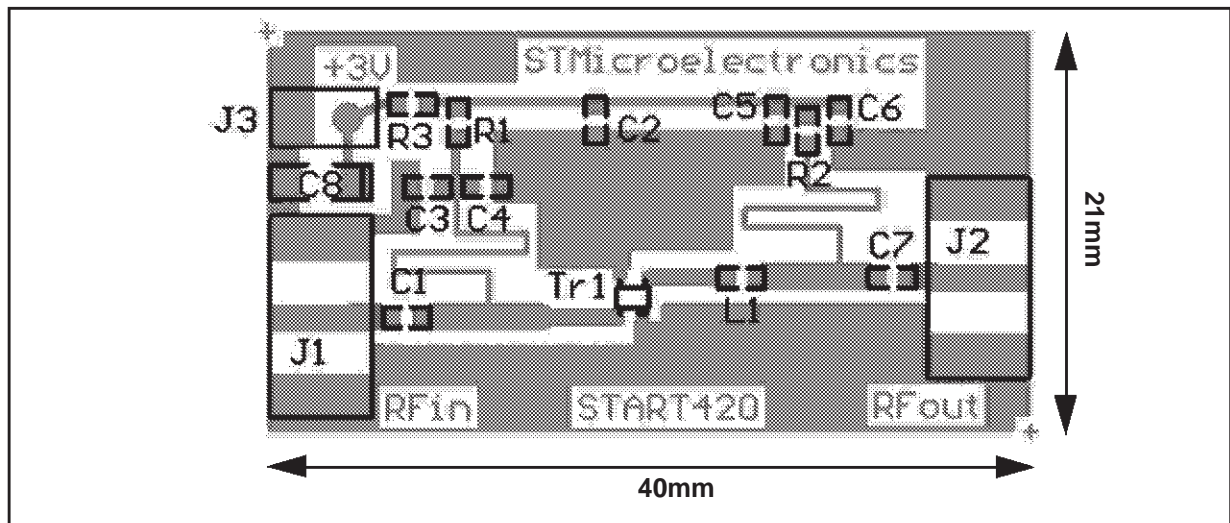
Figure 1: Schematic Design



## AN1352 - APPLICATION NOTE

This amplifier is realized with a microstrip line as matching elements and a small number of surface-mount components. A single pin ( $V_{CC}=3V$ ) for voltage supply is used. A  $1\mu F$  bypass capacitor to filter the supply at the common  $V_{CC}$  node is also used. The transistor's base is connected to the power supply through a choke inductor (microstrip line TrL3) and the transistor's collector is connected to the voltage supply through a choke inductor (microstrip line TrL4). The collector's voltage is 2V. The input matching is realized with both a chip-capacitor (C1) and a 60ohm series transmission line of  $15^\circ$  electrical length (TrL1). The output matching is realized with both a chip-inductor (L1) and a 60ohm series transmission line of  $16^\circ$  electrical length (TrL2). Resistor (R2) is used to improve RF circuit stability.

**Figure 2: Demoboard Layout**



**Table 1: Bill of Materials**

Component	Value	Unit	Size	Comment
R1	13	K $\Omega$	0603	
R2	18	$\Omega$	0603	
R3	27	$\Omega$	0603	
C1	3.9	pF	0603	
C2	10	nF	0603	
C3	100	pF	0603	
C4	10	nF	0603	
C5	100	pF	0603	
C6	10	nF	0603	
C7	10	pF	0603	
C8	1	$\mu F$	0603	
L1	1.5	nH	0603	
Tr1			SOT-343	Start420
TrL1				Inputmatch, w=1mm
TrL2				Outputmatch, w=1mm
TrL3				Dc-bias, w=0.3
TrL4				Dc-bias, w=0.3
TrL5				emitter-microstrip-line, w=0.7mm
TrL6				emitter-microstrip-line, w=0.7mm
J1				RF Connector; sma-f
J2				RF Connector; sma-f
J3				DC Connector
Substrate	FR4			h= 0.03 inch; Er=4.5

### 3. LNA PERFORMANCE.

The high intercept point START420 amplifier is biased at  $V_{ce}=2V$  and  $I_c=20mA$ . The measured gain and noise figure is shown in figures 3 and 4. The optimum amplifier noise figure is 1.9dB and the associated gain between 1800MHz and 1900MHz is about 18dB. Measured input and output return loss are shown in figures 5 and 6. The Input Return Loss is about 18dB from 1800MHz through 1900MHz.

Figure 3: Power Gain vs. Frequency

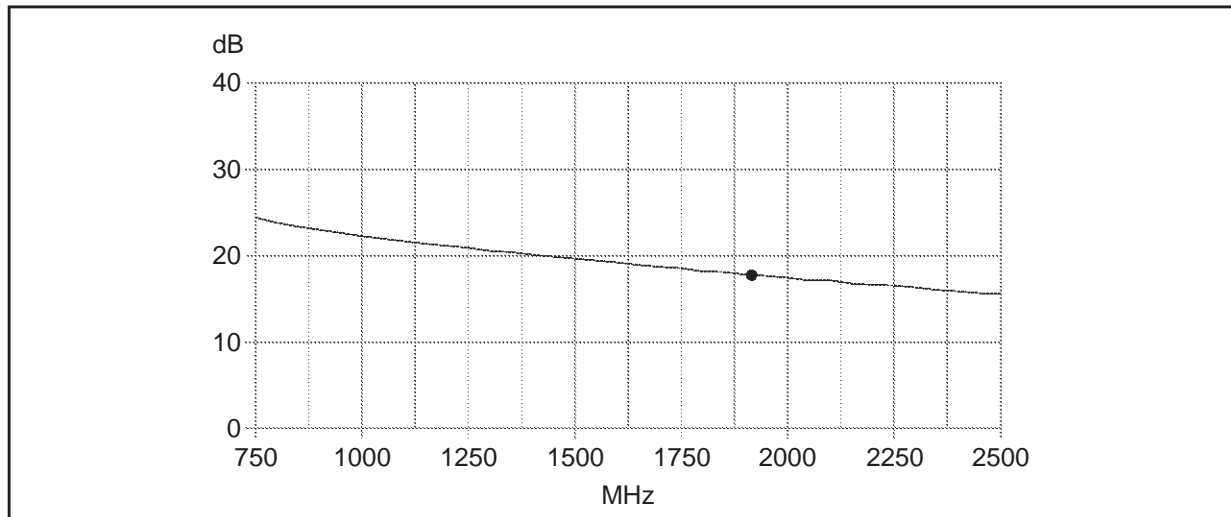


Figure 4: Noise Figure vs. Frequency

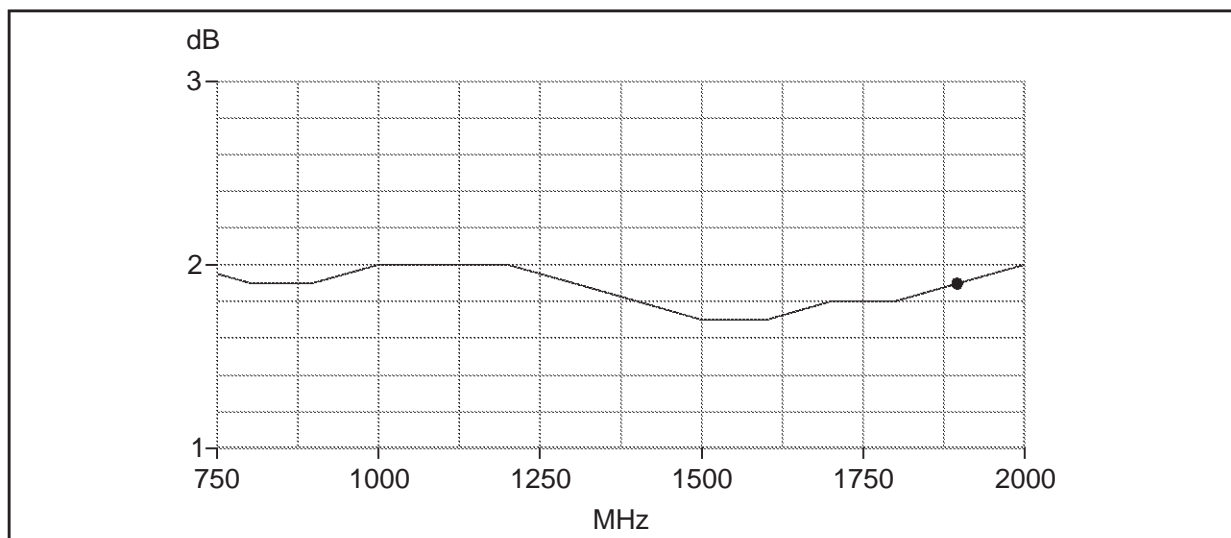


Figure 5: Input Return Loss vs. Frequency

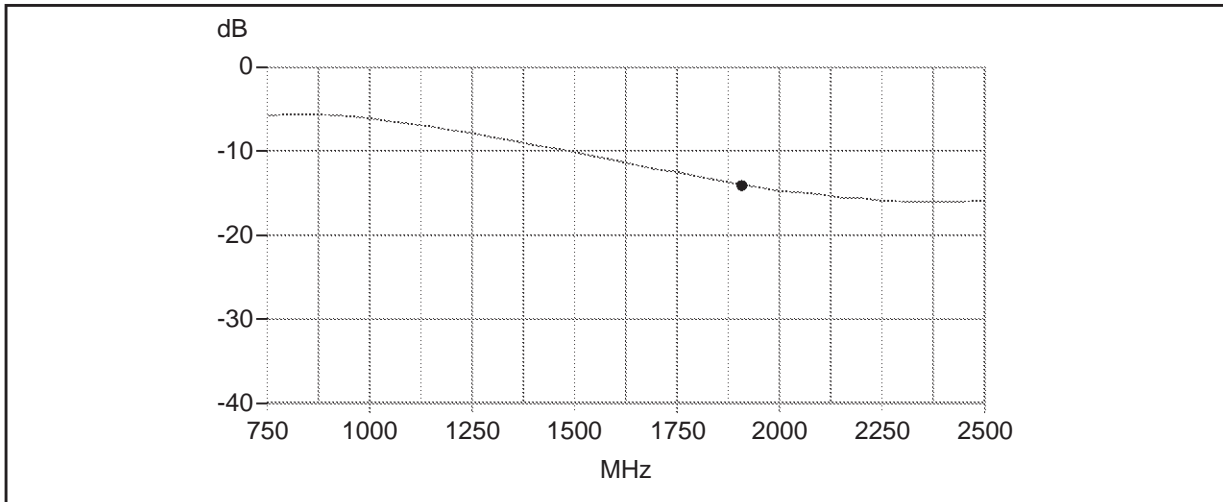


Figure 6: Output Return Loss vs. Frequency

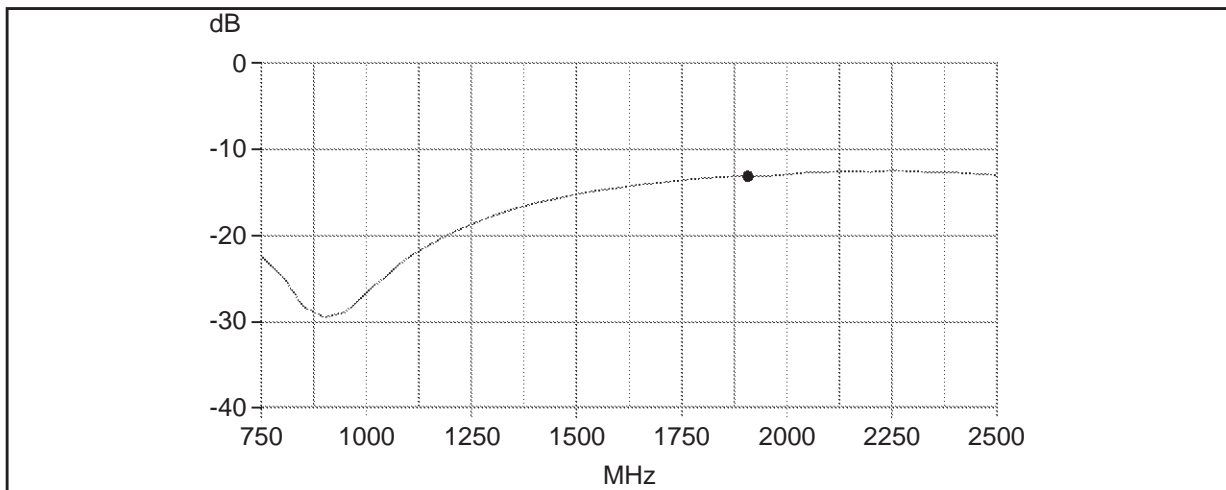


Figure 7: In-band Third Order Intermodulation Product Distorsion

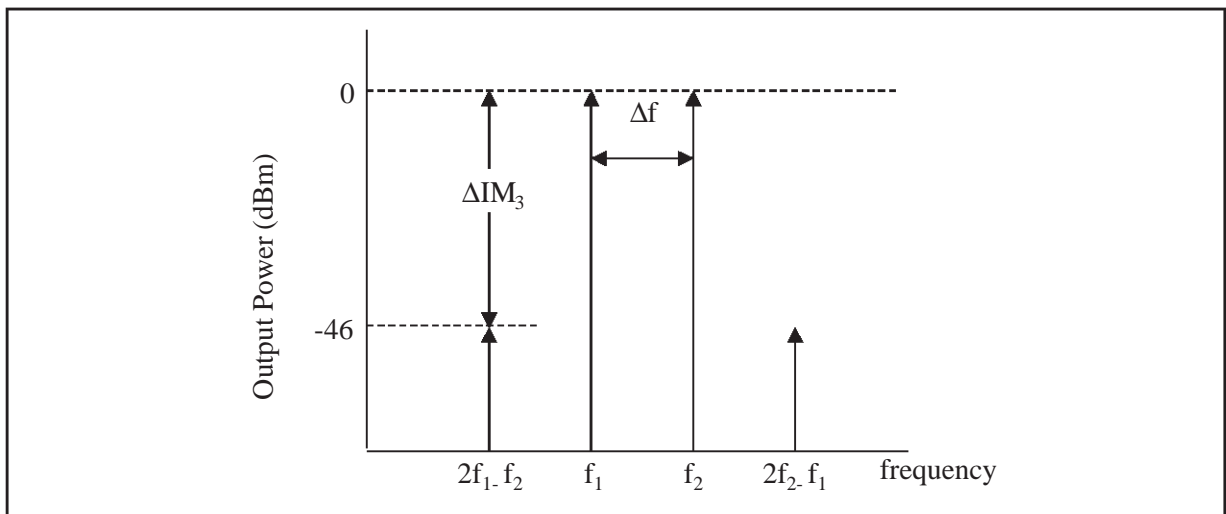


Figure 7 is a partial representation of the LNA output spectrum.  $f_1=1900\text{MHz}$  and  $f_2 =1901\text{MHz}$  are equal amplitude input test tones. For this LNA we use  $-18\text{dBm}$  input power in order to reach  $0\text{dBm}$  of output power for each test tones. Other signals besides  $f_1$  and  $f_2$  are generated as a result of non-linear device behavior.

The Output IP3 is calculated as follows:

$$IP3_{out} = \frac{\Delta IM3}{2} + P_{out}$$

where  $\Delta IM3$  (please refer figure 7) is the difference between one of two equal amplitude test tones present at the amplifier output, and the level of the highest 3rd -order distortion product. The  $\Delta IM3$  measured is  $46\text{dB}$ .

So we have:

$$IP3_{out} = \frac{\Delta IM3}{2} + P_{out} = \frac{46}{2} + 0 = 23\text{dBm}$$

Information furnished is believed to be accurate and reliable. However, STMicroelectronics assumes no responsibility for the consequences of use of such information nor for any infringement of patents or other rights of third parties which may result from its use. No license is granted by implication or otherwise under any patent or patent rights of STMicroelectronics. Specification mentioned in this publication are subject to change without notice. This publication supersedes and replaces all information previously supplied. STMicroelectronics products are not authorized for use as critical components in life support devices or systems without express written approval of STMicroelectronics.

The ST logo is a registered trademark of STMicroelectronics

© 2001 STMicroelectronics - Printed in Italy - All rights reserved

STMicroelectronics GROUP OF COMPANIES

Australia - Brazil - China - Finland - France - Germany - Hong Kong - India - Italy - Japan - Malaysia - Malta - Morocco - Singapore - Spain - Sweden - Switzerland - United Kingdom - U.S.A.

<http://www.st.com>



LittleDiode supplies new, hard to find or obsolete electronic components and semiconductors all over the world.

With over two million different components listed you are sure to find the part you need.

Feel free to visit us today at our online store:

[LittleDiode.com](http://LittleDiode.com)

Looking forward to providing you with the best possible service.