

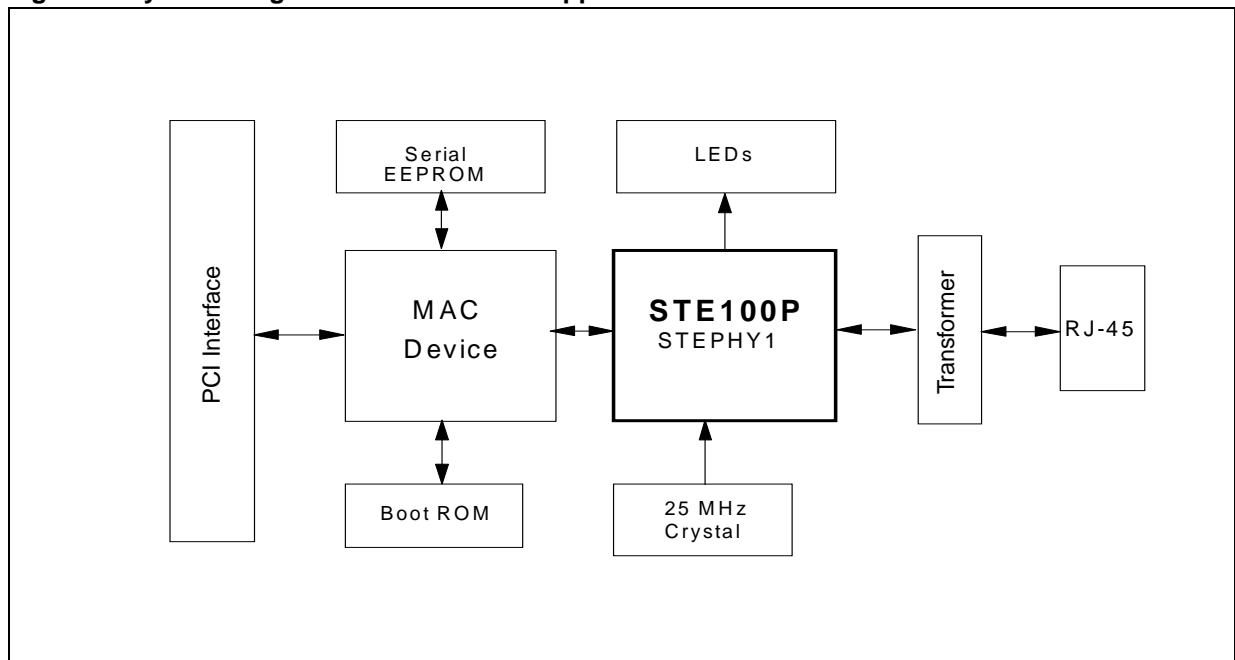
## STE100P - SINGLE PORT FAST ETHERNET TRANSCEIVER

### 1.0 GENERAL DESCRIPTION

The STE100P, also referred to as STEPHY1, is a high performance Fast Ethernet physical layer interface for 10BASE-T and 100BASE-TX applications. It was designed with advanced CMOS technology to provide a Media Independent Interface (MII) for easy attachment to 10/100 Media Access Controllers (MAC) and a physical media interface for 100BASE-TX and 10BASE-T. The twisted pair interface directly drives a 10/100 twisted pair connection. STE100P is an excellent device perfectly suited for hub, switch, router and other embedded Ethernet applications.

The system diagram is as shown below:

**Figure 1. System Diagram of the STE100P Application**



### 2.0 FEATURES

- Integrates the whole physical layer functions of the 100BASE-TX and 10BASE-T
- 3.3V low power operation
- The hardware control pins set the initial state of the STE100P at power-up
- Designed with a power down feature, which can save the power consumption significantly
- Can operate for either full duplex or half duplex network applications.
- MII interface
- Provides auto-negotiation, parallel detection or manual control for mode setting
- Provides MLT-3 transceiver with DC restoration for Base-line wander compensation

- Provides transmit wave-shaper, receive filters, and adaptive equalizer
- Provides loop-back modes for diagnostic testing
- Builds in Stream Cipher Scrambler/Descrambler and 4B/5B encoder/decoder
- Supports external transmit transformer with turn ratio 1:1
- Supports external receive transformer with turn ratio 1:1

### **3.0 DESIGN AND LAYOUT GUIDELINES**

#### **3.1 General Guidelines**

- Verify that all components meet application requirements.
- Design in filters for the analog power circuits.
- Use bulk capacitors (10-22uF) between the power and ground planes to minimize switching noise, particularly near high-speed busses (>25 MHz).
- Use an ample supply of 0.1uF decoupling capacitors to reduce high-frequency noise on the power and ground planes.
- Use a single analog power and ground plane for multiple devices. Keep ferrite bead currents under 65% of the rated load
- Avoid breaks in the ground plane, especially in areas where it is shielding high-frequency signals.
- Keep power and ground noise levels below 50mV
- Keep high-speed signals out of the area between STE100P and the magnetics
- Ensure that the power supply is rated for the load and that output ripple is minimal (<50mV)
- Route high-speed signals next to a continuous, unbroken ground plane.
- Provide impedance matching on long traces to prevent reflections.
- Do not route any digital signals between the STE100P and the RJ-45 connectors at the edge of the board
- It is recommended to fill in unused areas of the signal planes with solid copper and attach them with vias to a Vcc or ground plane that is not located adjacent to the signal layer.

#### **3.2 Differential Signal Layout Guidelines**

- Route differential pairs close together and away from everything else
- Keep both traces of each differential pair as close to the same length as possible.
- Avoid vias and layer changes
- Keep transmit and receive pairs away from each other. Run orthogonally, or separate with a ground plane layer.

#### **3.3 Power and Ground**

In order to obtain high speed communications design, the power and ground planes may be conceptually divided into three regions (the analog and digital power planes and the signal ground plane)

The analog power region extends from the magnetics back to the STE100P, whereas the digital power region extends from the MII interfaces of the STE100P through the rest of the board. Only components and signals pertaining to the particular interface should be placed or routed through each respective region. The digital section supplies power to the digital V<sub>cc</sub>e/i pin and to the external components. The analog section supplies power to V<sub>cc</sub>a pins of the STE100P.

The signal ground region is one continuous, unbroken plane that extends from the magnetics through the rest

of the board. The signal ground plane may be combined with chassis ground or isolated from it. If the ground planes are combined, an isolation area is not required. When laying out ground planes, special care must be taken to avoid creating loop antenna effect. Some guidelines are as follows-

- Run all ground plane as solid square or rectangular regions
- Avoid creating loops with ground planes around other planes

### 3.4 Recommendations

The following recommendations apply to design and layout of the power and ground planes and will prevent the most common signal and noise issues.

- Divide the Vcc plane into two sections - analog and digital. The break between the planes should run under the device.
- When dividing the Vcc plane, it is not necessary to add extra layers to the board. Simply create moats or cutout regions in existing layers.
- Place a high-frequency bypass cap (0.1uF) near each analog Vcc pin
- Join the digital and analog sections at one or more points by ferric beads. Ensure that the maximum current rating of the bead is at least 150% of the nominal current that is expected to flow through it. (250mA per STE100P)
- Place a bulk capacitor (22uF) on each side of each ferrite bead to stop switching noise from travelling through the ferrite.

For designs with multiple STE100P's, it is acceptable to supply all from one analog Vcc plane. This plane can be joined to the digital Vcc plane at multiple points, with a ferrite bead at each one.

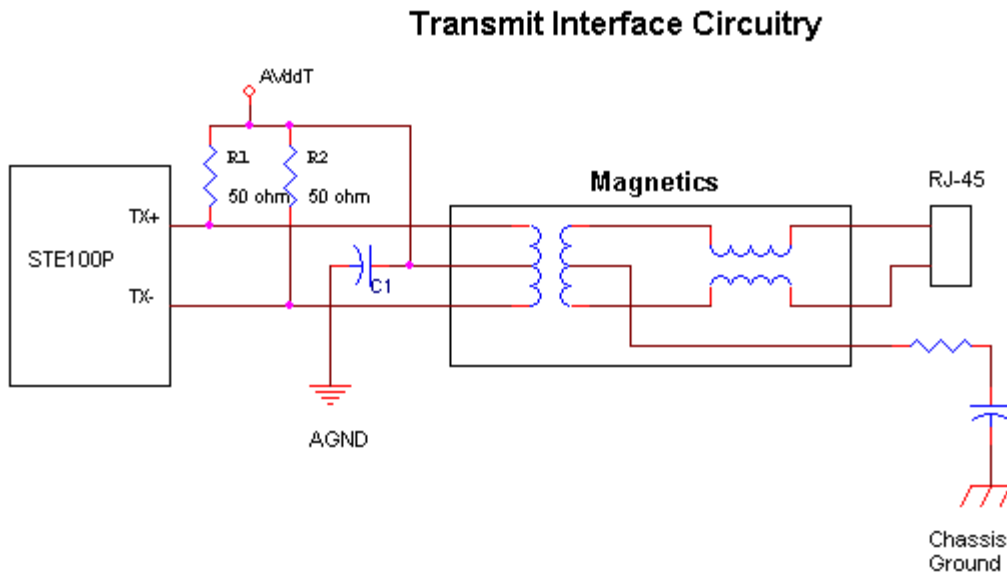
## 4.0 TWISTED PAIR INTERFACE

### 4.1 Transmit Interface Circuitry

Figure 2 shows a typical transmit interface circuitry. Current is sourced by the AVddt output to the centertap of the primary side of the winding. Current flows from the centertap to TX+ and TX-. Other components are as follows:

- R1 and R2 are 49.9 ohm resistors that provide impedance matching to the line, which has a nominal impedance of 100 ohm.
- C1 shunts any common-mode energy present in the output to ground.
- The magnetics consists of the main winding and a common-mode choke.
- The common-mode choke stops common mode energy from reaching the line. It works together with capacitor C1 to direct common-mode energy away from the line.

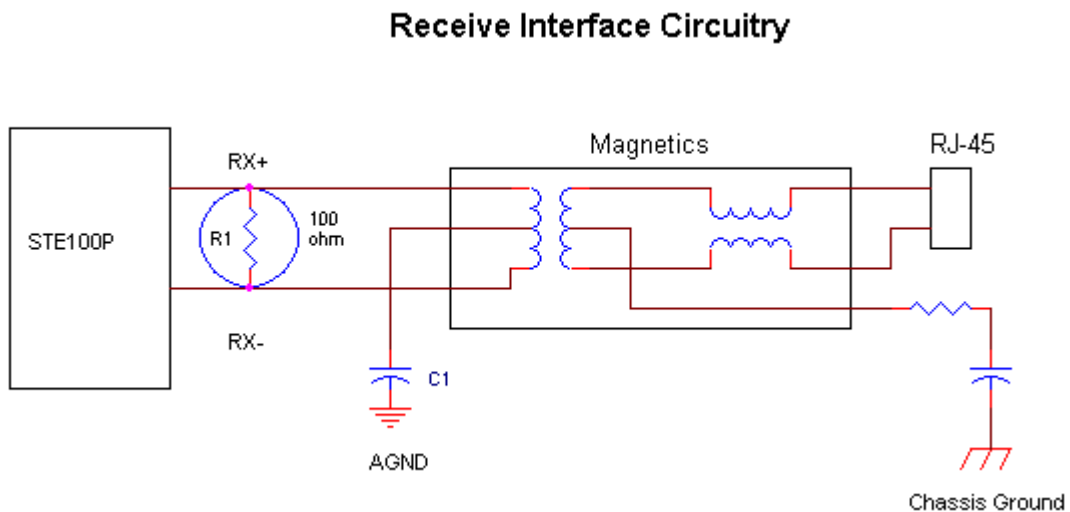
Figure 2. Transmit Interface Circuitry



4.2 Receive Termination Circuitry

The receive termination circuit as shown in Figure 3 is a simple 100 ohm, 1% resistor across the RX+/RX- pair. The receive circuit consists of magnetics, which include a main winding and a common-mode choke, and termination resistance to match the line impedance. The common-mode choke can be located on either the primary or secondary side of the winding. Some vendors place the receive common-mode choke on the line-side (primary) of the main winding while others place it on the device side (secondary). Either location is acceptable.

Figure 3. Receive Interface Circuitry

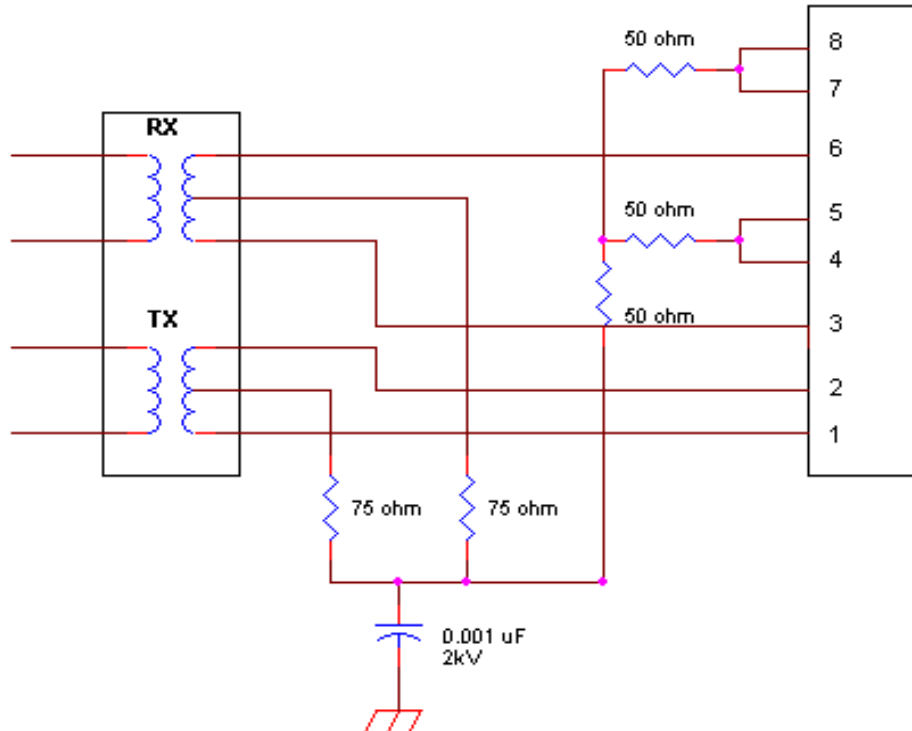


4.3 Standard termination

ST recommends a standard termination for the unused pairs on the twisted-pair interface as shown in Figure 4. The termination basically looks like a 100 ohm load, matched to the line, which is by passed to chassis ground. This termination is added for robustness and noise reduction.

Figure 4. Suggested Termination Circuit

Suggested Termination Circuit



5.0 CRYSTAL REQUIREMENTS

The following table shows the crystal specifications

Parameter	Units	Min	Max	Nom
Frequency	MHz	-	-	25.0
Frequency Stability	ppm	-	+ <sub>-</sub> 100	-

Table 1

6.0 LED PINS

The LED display, consists of five LEDs having the following characteristics:

- Speed LED: 100Mbps(on) or 10Mbps(off)

- ✦ Receive LED: Blinks at 10Hz when receiving, but not colliding
- ✦ Transmit LED: Blinks at 10Hz when transmitting, but not colliding
- ✦ Link LED: On when 100M or 10M link ok
- ✦ Collision LED: Blinks at 20Hz to indicate a collision

## **7.0 TYPICAL APPLICATION**

While the STE100P may be used in a variety of applications such as multi-port repeaters or switches, the application shown below gives a very simple way of evaluating and using the STE100P with minimum circuitry. (Refer to Bill of Materials in Table 2)

A typical application of the STE100P presented here would be in designing a Fast Ethernet transceiver with a standard MII interface and a 10/100 Mbps twisted pair connector. (Refer to Fig. 5)

In this application,

- STE100P is the only IC needed.
- It connects directly to the industry standard 40-pin MII connector.
- It also connects to the RJ-45 jack via a standard Fast Ethernet transformer.
- 5, 4-position DIP switches are used to select the PHY address. (More details on the PHY address registers, etc. are available on the STE100P datasheet)
- 2, 10-position DIP switches are used for determination of all of the pin-selectable options of the STE100P such as duplex mode, data rate and auto negotiation.
- STE100P also supports the MII MDIO access to all of its internal registers.
- LEDs are included to indicate status information such as speed, duplex mode, transmit and receive activity and link status.
- There are registers with 16 bits each supported for STE100P. (More details on these registers are available in the STE100P datasheet).
- There are also 4 special registers for advanced chip control and status information.

### **7.1 Schematics**

The schematics for the sample application can be found on the ST website at:

<http://www.st.com/stonline/prodpres/dedicate/connect/datacom/ste100p/ste100p.htm>

### **7.2 Bill of Materials**

Following are the Bill of Materials for the STE100P sample application.

## AN1301 APPLICATION NOTE

---

Item	Quantity	Reference	Part
1	27	C1,C2,C3,C4,C8,C9,C10, C11,C12,C13,C14,C15,C16, C17,C18,C19,C20,C21,C23, C25,C26,C30,C38,C39,C41, C42,C44	0.1UF
2	5	C5,C28,C29,C50,C51	22UF
3	2	C7,C6 22PF	
4	3	C36,C37,C46	10PF
5	1	C40	0.001UF
6	1	C43	1000PF
7	1	C45	0.01UF
8	3	D1,D2,D3	LED
9	1	JP1	HEADER
10	1	J1	RJ45
11	5	L1,L2,L3,L4,L5	27ohm, 100MHz BEAD
12	1	OSC	25MHZ oscillator
13	1	Q2	NDS352P
14	1	Q3	NDS351N
15	1	Q4	2N3904
16	2	R1,R13	4.99K
17	3	R2,R3,R4	330
18	3	R5,R22,R40	0
19	1	R6	33
20	2	R9,R14	20K
21	3	R10,R39,R41	10k
22	1	R11	5.1K
23	1	R12	2.2K
24	2	R21,R20	50
25	1	R26	100
26	3	R28,R30,R34	49.9
27	2	R33,R32	75
28	1	R36	133k
29	1	R38	4.7K
30	1	U1	32PIN
31	1	U2	PCISLOT_0
32	1	U3	93C46
33	1	U4	STE10/100A
34	1	U5	LM393M
35	1	U7	HB626-1 Transpower
36	1	U8	74VHC123A
37	1	U9	3.3V Regulator
38	1	X1	25MHz crystal

Information furnished is believed to be accurate and reliable. However, STMicroelectronics assumes no responsibility for the consequences of use of such information nor for any infringement of patents or other rights of third parties which may result from its use. No license is granted by implication or otherwise under any patent or patent rights of STMicroelectronics. Specifications mentioned in this publication are subject to change without notice. This publication supersedes and replaces all information previously supplied. STMicroelectronics products are not authorized for use as critical components in life support devices or systems without express written approval of STMicroelectronics.

The ST logo is a registered trademark of STMicroelectronics  
© 2001 STMicroelectronics - All Rights Reserved

STMicroelectronics GROUP OF COMPANIES  
Australia - Brazil - China - Finland - France - Germany - Hong Kong - India - Italy - Japan - Malaysia - Malta - Morocco - Singapore - Spain  
- Sweden - Switzerland - United Kingdom - U.S.A.  
<http://www.st.com>



LittleDiode supplies new, hard to find or obsolete electronic components and semiconductors all over the world.

With over two million different components listed you are sure to find the part you need.

Feel free to visit us today at our online store:

[LittleDiode.com](http://LittleDiode.com)

Looking forward to providing you with the best possible service.