

Silicon RECTIFIER

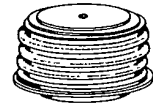
A540

2400 Volts 1000 Amps Avg.

The A540 Series of high power rectifier diodes feature the newly developed, multi-diffusion technology in a new General Electric pressure-mounted package.

FEATURES:

- High Current, High Voltage
- Pressure Contacts
- Glazed Ceramic Package with 1" Creepage Path
- Reversibility (eliminates need for special reverse polarity units)
- Hermetic Seal
- Available in Factory Assembled Heat Exchangers or Ready-to-Mount



IMPORTANT: Mounting instructions on the last page of the C501 specification must be followed.

MAXIMUM ALLOWABLE RATINGS

TYPE	REPETITIVE PEAK REVERSE VOLTAGE, V_{RRM} $T_J = -40^\circ\text{C to } +185^\circ\text{C}$	NON-REPETITIVE REVERSE VOLTAGE, V_{RSM} $T_J = 0^\circ\text{C to } +185^\circ\text{C}$	V_{RRM}/V_{RSM} $T_J = 185^\circ\text{C to } 200^\circ\text{C}$
A540LD	2400 Volts	2500 Volts	2000 Volts
A540LC	2300	2400	1950
A540LB	2200	2300	1850
A540LA	2100	2200	1750
A540L	2000	2100	1700

Lower voltages available – consult factory.

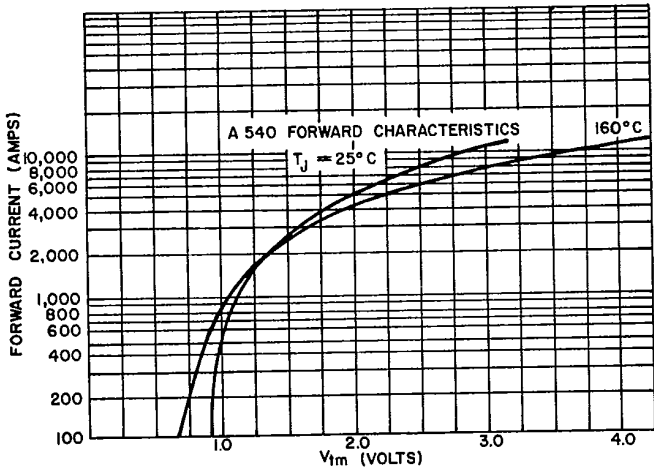
Average Forward Current	.1000 Amperes, 1 Φ Average
Peak One-Cycle Surge Current	12,000 Amperes
Minimum I^2t Rating (for times ≥ 1.5 msec)	285,000 Ampere ² Seconds
Minimum I^2t Rating (at 8.3 msec)	597,000 Ampere ² Seconds
Maximum Forward Voltage Drop ($T_C = 160^\circ\text{C}$ Case Temperature, 1000 Amps. Peak)	1.08 Volts
Peak Reverse Leakage Current ($T_J = 200^\circ\text{C}$, $V =$ Rated V_{RRM})	35mA
Maximum Thermal Resistance, $R_{\theta JS}$ (Double-Side Cooling)	0.06 $^\circ\text{C/Watt}$
Storage Temperature, T_{STG}	-40 $^\circ\text{C}$ to +200 $^\circ\text{C}$
Operating Junction Temperature, T_J	-40 $^\circ\text{C}$ to +200 $^\circ\text{C}$
Mounting Force Required	.2200 Lbs. \pm 10% 9.8 KN \pm 10%

NOTES:

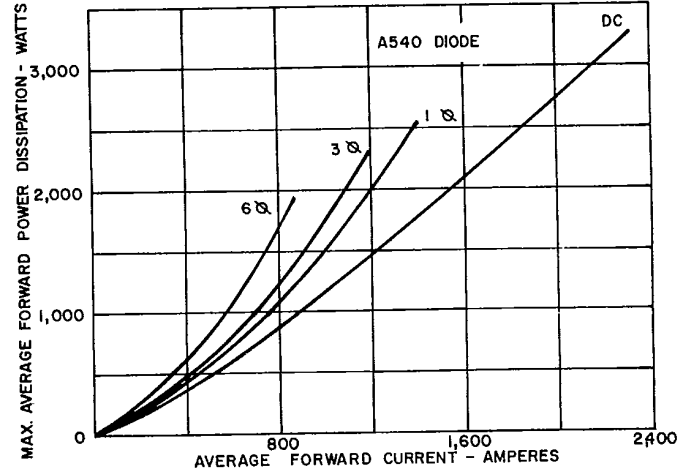
- ¹ Assumes a heatsink thermal resistance of less than 1.1 $^\circ\text{C/watt}$.
- ² Non-recurrent voltage and current ratings, as contrasted to repetitive ratings which apply for occasional or unpredictable overloads. For example, the forward surge current ratings are non-recurrent ratings that are used in fault coordination work.

A-----00540-1X

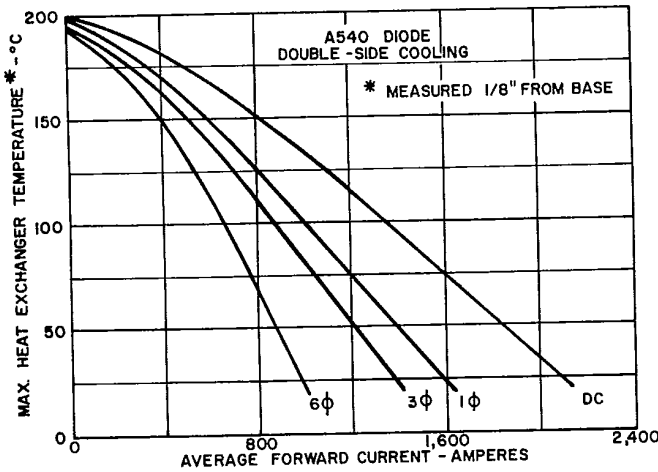
A540



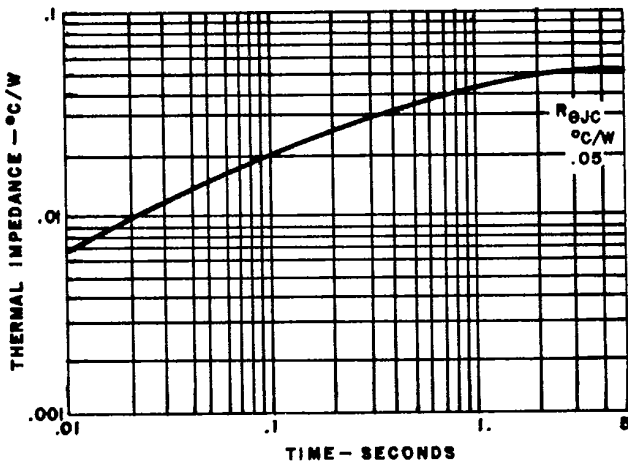
1. MAXIMUM ON-STATE CHARACTERISTICS



2. AVERAGE FORWARD POWER DISSIPATION VERSUS AVERAGE FORWARD CURRENT



3. MAXIMUM HEAT EXCHANGER TEMPERATURE VERSUS AVERAGE FORWARD CURRENT FOR DOUBLE-SIDE COOLING

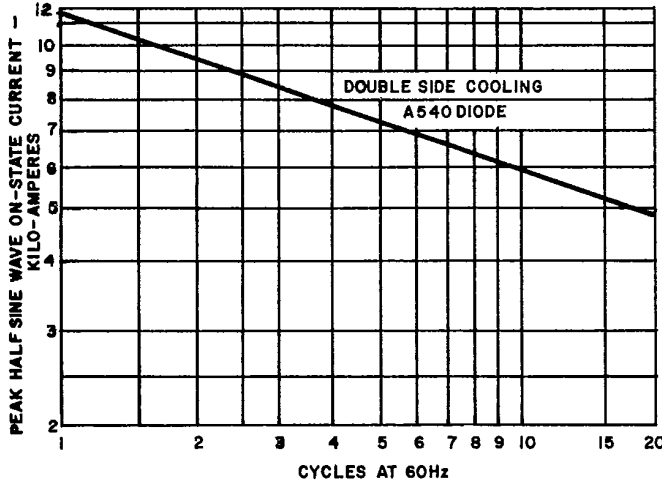


4. TRANSIENT THERMAL IMPEDANCE - JUNCTION-TO-CASE

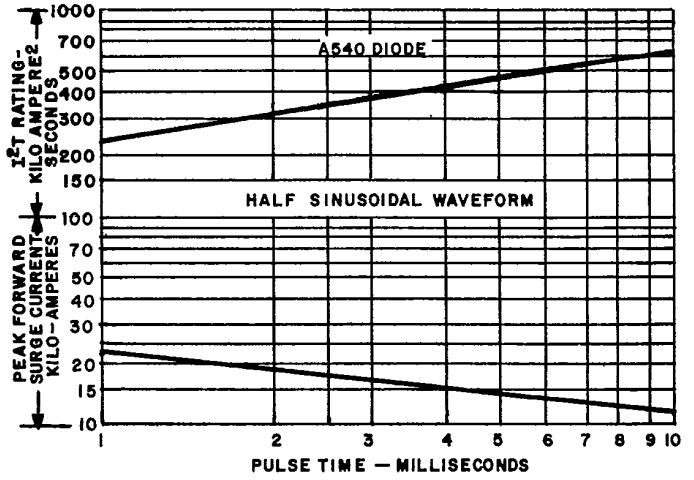
NOTES:

1. Power "D" adds .01°C/W to account for both case to dissipator interfaces, when properly mounted; e.g., $R_{\theta JS} = .06^\circ\text{C/W}$. See Mounting Instructions.
2. DC Thermal Impedance is based on average full cycle junction temperature. Instantaneous junction temperature may be calculated using the following modifications.
 - end of conducting portion of cycle
 - 120° sq. wave add .0065°C/W along entire curve
 - 180° sq. wave add .0047°C/W along entire curve
 - 180° sine wave add .0026°C/W along entire curve
 - end of full cycle
 - any wave, subtract .0026°C/W along entire curve

A540

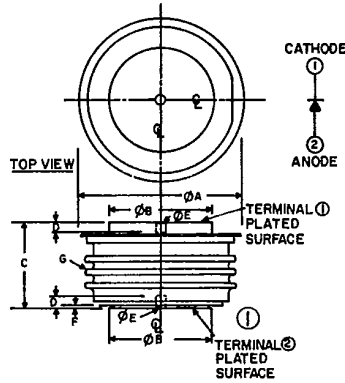


5. MAXIMUM SURGE CURRENT FOLLOWING RATED LOAD CONDITIONS



6. SUBCYCLE PEAK SURGE FORWARD CURRENT AND I²t RATING FOLLOWING RATED LOAD CONDITIONS

OUTLINE DRAWING



NOTE:
1. GLAZED CERAMIC INSULATOR
WITH 1.00 INCH MIN. SURFACE
CREEPAGE (25.40mm)

SYMBOL	INCHES		MILLIMETERS		NOTE
	MIN	MAX	MIN	MAX	
Φ A	—	2.000	—	50.80	
Φ B	1.240	1.260	31.50	32.00	
C	1.000	1.060	25.40	26.92	
D	.080	—	2.03	—	
Φ E	0.136	0.146	3.45	3.71	
F	.034	—	0.86	—	
G					1

A-----00540-3X



LittleDiode supplies new, hard to find or obsolete electronic components and semiconductors all over the world.

With over two million different components listed you are sure to find the part you need.

Feel free to visit us today at our online store:

LittleDiode.com

Looking forward to providing you with the best possible service.