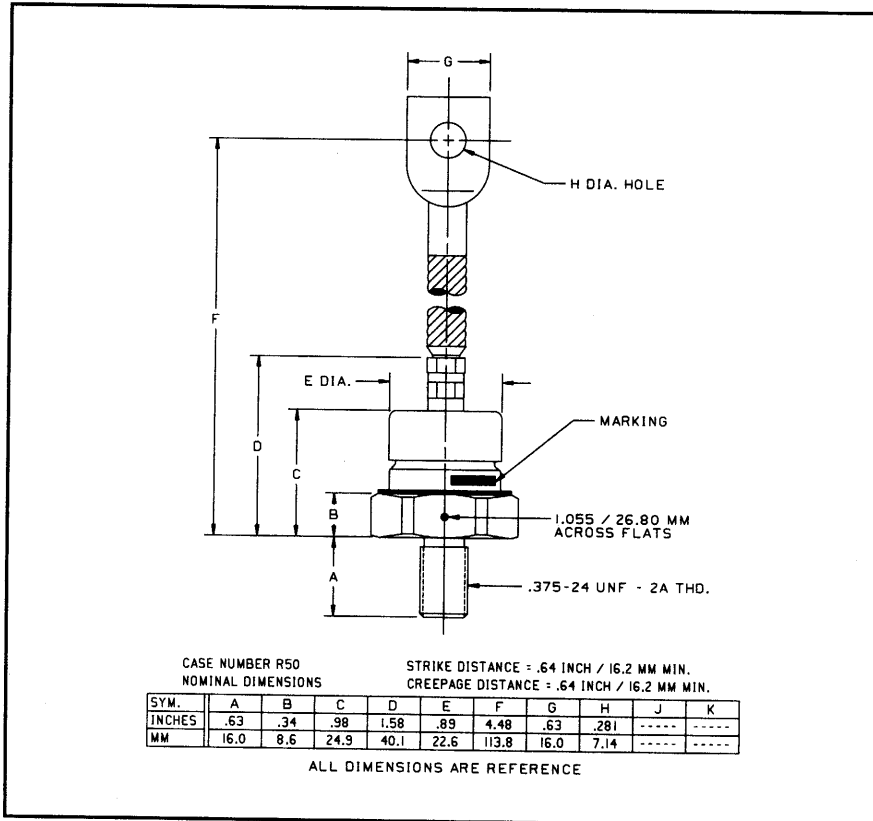


Powerex, Inc., 200 Hillis Street, Youngwood, Pennsylvania 15697-1800 (412) 925-7272  
 Powerex, Europe, S.A. 428 Avenue G. Durand, BP107, 72003 Le Mans, France (43) 41.14.14

**Silicon Rectifier**  
 150 Amperes Average  
 1600 Volts



A180 (R) (Outline Drawing)



A180 (R)  
 Silicon Rectifier  
 150 Amperes Average, 1600 Volts

### Ordering Information:

Select the complete five or six digit part number you desire from the table, i.e. A180PM is a 1600 Volt, 150 Ampere Silicon Rectifier.

Type	Voltage		Current
	V <sub>RRM</sub>	Code	I <sub>T(av)</sub>
A180	200	B	150
	400	D	
	600	M	
	800	N	
	1000	P	
	1200	PB	
	1400	PD	
	1600	PM	

### Features:

- Hermetic Seal

### Applications:

- Transportation Equipment
- DC Motor Control
- DC Power Supplies
- Battery Vehicles



Powerex, Inc., 200 Hillis Street, Youngwood, Pennsylvania 15697-1800 (412) 925-7272  
Powerex, Europe, S.A. 428 Avenue G. Durand, BP107, 72003 Le Mans, France (43) 41.14.14

**A180 (R)**  
**Silicon Rectifier**  
150 Amperes Average, 1600 Volts

### Absolute Maximum Ratings

Characteristics	Symbol	A180 (R)	Units
RMS Forward Current	$I_{F(rms)}$	236	Amperes
Average Forward Current	$I_{F(av)}$	150	Amperes
One Cycle Surge Current	$I_{FSM}$	3400	Amperes
$i^2t$ (for Fusing), Times $\geq 1.0$ milliseconds	$i^2t$	22000	$A^2sec$
Storage Temperature	$T_{stg}$	-40 to +200	$^{\circ}C$
Operating Temperature	$T_j$	-40 to +200	$^{\circ}C$
Mounting Torque (Lubricated)		90 to 100	in-lb
		10.2 to 11.3	N-m

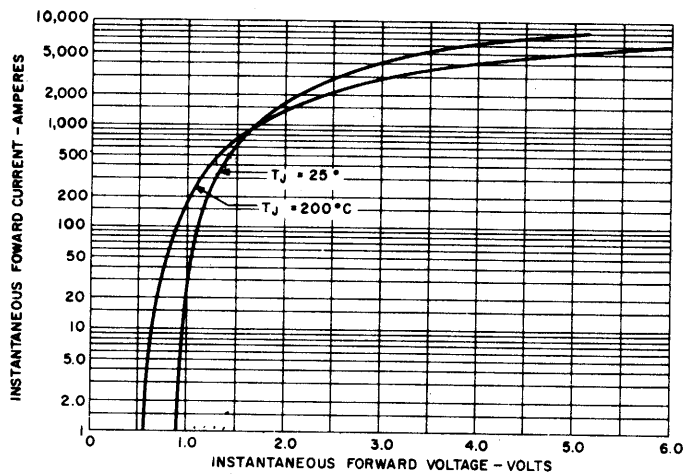
### Electrical and Thermal Characteristics

Characteristics	Symbol	Test Conditions	A180 (R)	Units
<b>Current - Conducting State Maximums</b>				
Forward Voltage Drop	$V_{FM}$	$T_C = 143^{\circ}C$ , $I_{F(av)} = 150A, 471A$ Peak	1.3	Volts
<b>Voltage - Blocking State Maximums</b>				
Repetitive Peak Reverse Voltage (Rated Limit)	$V_{RRM}$		1600	Volts
Non-rep. Trans. Peak Rev. Voltage (Rated Limit)	$V_{RSM}$	$V \leq 5.0msec$	1800	Volts
Reverse Leakage Current, mA peak	$I_{RRM}$	$T_j$ at max., $V_{RRM} =$ Rated	20	mA
<b>Thermal</b>				
Maximum Resistance, Junction to Case	$R_{\theta(j-c)}$		0.3	$^{\circ}C/Watt$

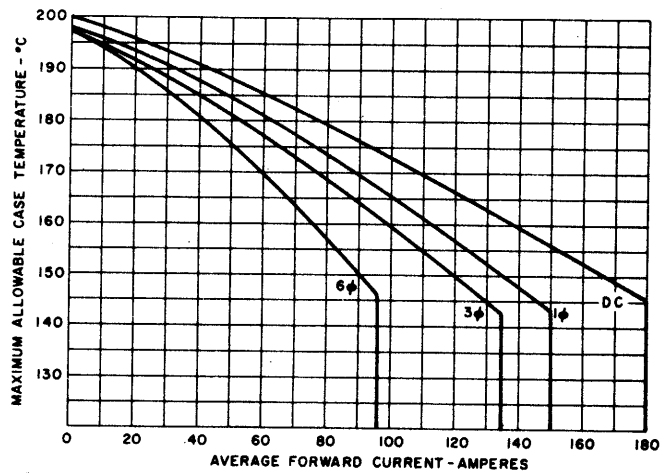


Powerex, Inc., 200 Hillis Street, Youngwood, Pennsylvania 15697-1800 (412) 925-7272  
 Powerex, Europe, S.A. 428 Avenue G. Durand, BP107, 72003 Le Mans, France (43) 41.14.14

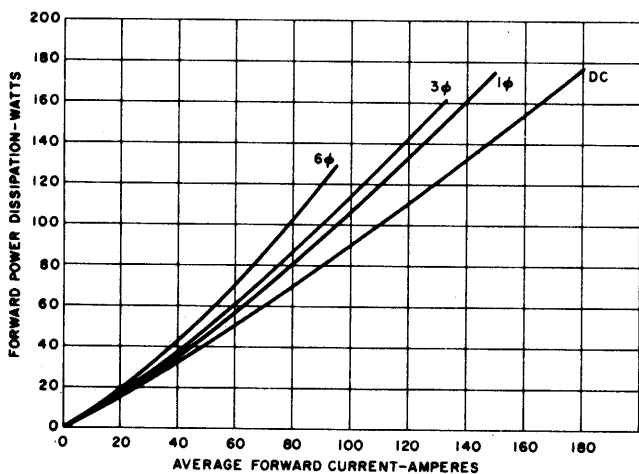
**A180 (R)**  
**Silicon Rectifier**  
 150 Amperes Average, 1600 Volts



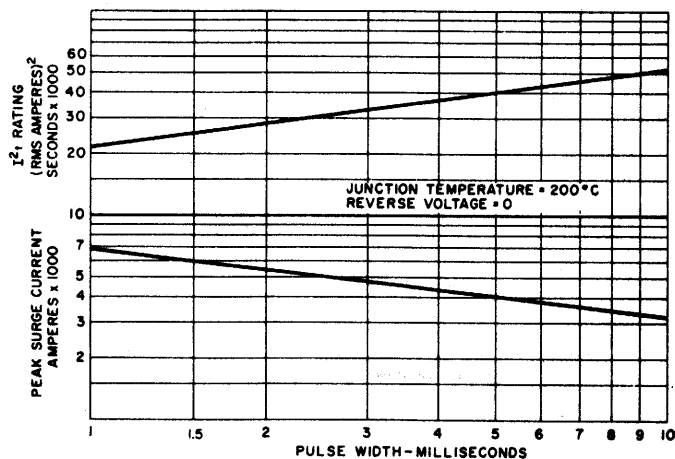
**MAXIMUM FORWARD CHARACTERISTICS**



**MAXIMUM CASE TEMPERATURE VS. AVERAGE FORWARD CURRENT**



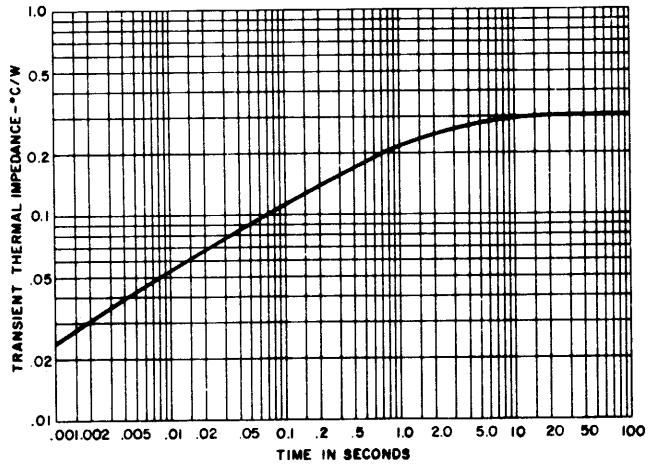
**AVERAGE FORWARD POWER DISSIPATION VS. AVERAGE FORWARD CURRENT**



**SUB-CYCLE SURGE FORWARD CURRENT AND I²t RATING VS. PULSE TIME FOLLOWING RATED LOAD CONDITIONS**

Powerex, Inc., 200 Hillis Street, Youngwood, Pennsylvania 15697-1800 (412) 925-7272  
Powerex, Europe, S.A. 428 Avenue G. Durand, BP107, 72003 Le Mans, France (43) 41.14.14

A180 (R)  
Silicon Rectifier  
150 Amperes Average, 1600 Volts



TRANSIENT THERMAL IMPEDANCE —  
JUNCTION-TO-CASE



LittleDiode supplies new, hard to find or obsolete electronic components and semiconductors all over the world.

With over two million different components listed you are sure to find the part you need.

Feel free to visit us today at our online store:

[LittleDiode.com](http://LittleDiode.com)

Looking forward to providing you with the best possible service.