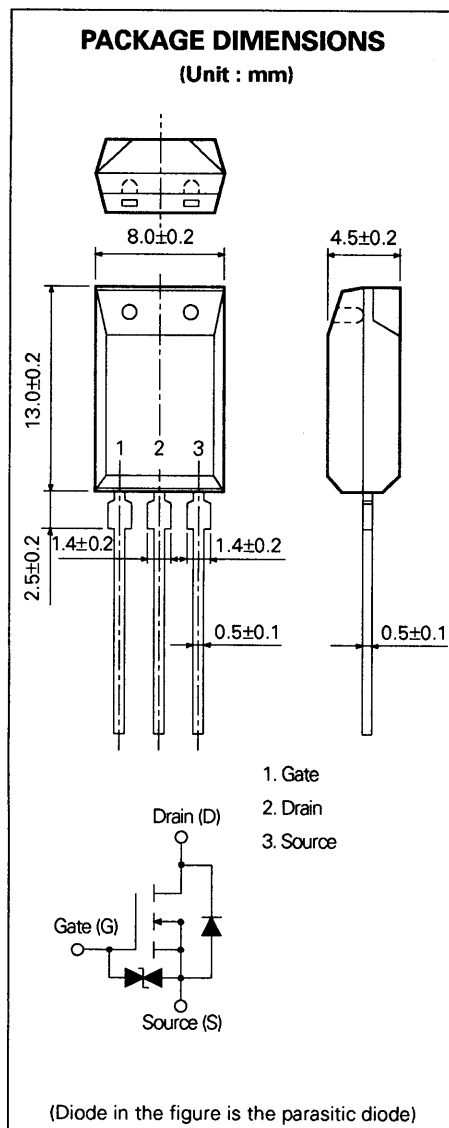


SWITCHING N-CHANNEL POWER MOS FET INDUSTRIAL USE



DESCRIPTION

The 2SK2132 is N-channel Power MOS Field Effect Transistor designed for high voltage switching applications.

FEATURES

- Low On-state Resistance
 $R_{DS(on)} = 0.65 \Omega$ MAX. ($V_{GS} = 10$ V, $I_D = 2.0$ A)
- Low C_{iss} $C_{iss} = 300$ pF TYP.
- Built-in G-S Gate Protection Diodes
- High Avalanche Capability Ratings

QUALITY GRADE

Standard

Please refer to "Quality grade on NEC Semiconductor Devices" (Document number IEI-1209) published by NEC Corporation to know the specification of quality grade on the devices and its recommended applications.

ABSOLUTE MAXIMUM RATINGS

Maximum Temperatures

| | | |
|---------------------|-------------|---------|
| Storage Temperature | -55 to +150 | °C |
| Channel Temperature | 150 | °C MAX. |

Maximum Power Dissipation

| | | |
|--|-----|---|
| Total Power Dissipation ($T_a = 25$ °C) | 1.8 | W |
|--|-----|---|

Maximum Voltages and Currents ($T_a = 25$ °C)

| | | | |
|-----------------|-------------------------|------|---|
| V_{DSS} | Drain to Source Voltage | 180 | V |
| V_{GSS} | Gate to Source Voltage | ±20 | V |
| $I_{D(DC)}$ | Drain Current (DC) | ±4.0 | A |
| $I_{D(pulse)*}$ | Drain Current (pulse) | ±16 | A |

Maximum Avalanche Capability Ratings**

| | | | |
|----------|--------------------------|------|----|
| I_{AS} | Single Avalanche Current | 4.0 | A |
| EAS | Single Avalanche Energy | 51.2 | mJ |

* $PW \leq 10 \mu s$, Duty Cycle $\leq 1\%$

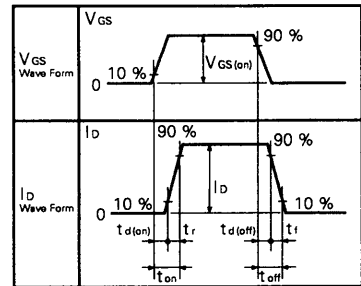
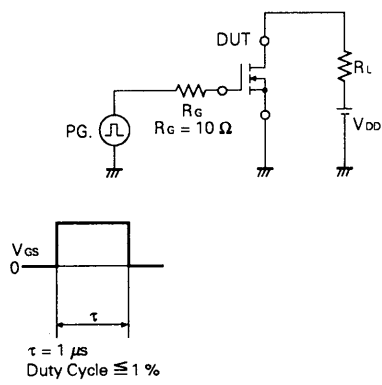
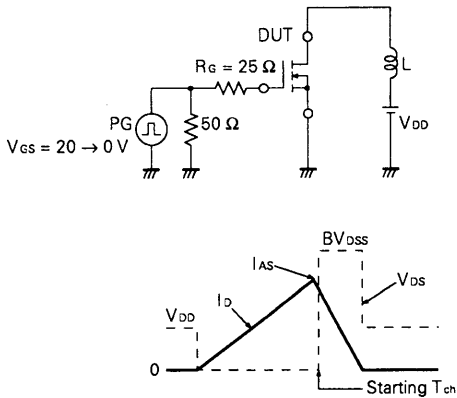
** Starting $T_{ch} = 25$ °C, $R_G = 25 \Omega$, $V_{GS} = 20$ V \rightarrow 0

ELECTRICAL CHARACTERISTICS (T_a = 25 °C)

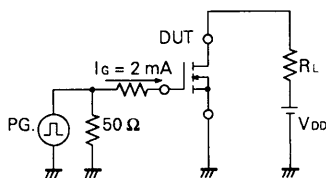
| CHARACTERISTIC | SYMBOL | MIN. | TYP. | MAX. | UNIT | TEST CONDITIONS |
|-------------------------------------|-----------------------|------|------|------|------|---|
| Drain to Source On-state Resistance | R _{DS (on)} | | 0.52 | 0.65 | Ω | V _{GS} = 10 V, I _D = 18 A |
| Gate to Source Cutoff Voltage | V _{GS (off)} | 2.0 | | 4.0 | V | V _{DS} = 10 V, I _D = 1 mA |
| Forward Transfer Admittance | y _{fs} | 0.5 | | | S | V _{DS} = 10 V, I _D = 18 A |
| Drain Leakage Current | I _{DSS} | | | 100 | μA | V _{DS} = 500 V, V _{GS} = 0 |
| Gate to Source Leakage Current | I _{GSS} | | | ±10 | μA | V _{GS} = ±20 V, V _{DS} = 0 |
| Input Capacitance | C _{iss} | | 300 | | pF | V _{DS} = 10 V V _{GS} = 0 f = 1 MHz |
| Output Capacitance | C _{oss} | | 170 | | pF | |
| Reverse Transfer Capacitance | C _{rss} | | 50 | | pF | |
| Turn-On Delay Time | t _{d (on)} | | 9.0 | | ns | V _{GS} = 10 V V _{DD} = 100 V I _D = 2 A, R _G = 10 Ω R _L = 50 Ω |
| Rise Time | t _r | | 10 | | ns | |
| Turn-Off Delay Time | t _{d (off)} | | 28 | | ns | |
| Fall Time | t _f | | 12 | | ns | |
| Total Gate Charge | Q _G | | 10 | | nC | V _{GS} = 10 V I _D = 2 A V _{DD} = 140 V |
| Gate to Source Charge | Q _{GS} | | 2.3 | | nC | |
| Gate to Drain Charge | Q _{GD} | | 4.7 | | nC | |
| Diode Forward Voltage | V _{F(S-D)} | | 0.9 | | V | I _F = 2 A, V _{GS} = 0 |
| Reverse Recovery Time | t _{rr} | | 180 | | ns | I _F = 2 A |
| Reverse Recovery Charge | Q _{rr} | | 0.5 | | μC | di / dt = 50 A/μs |

Test Circuit 1 : Avalanche Capability

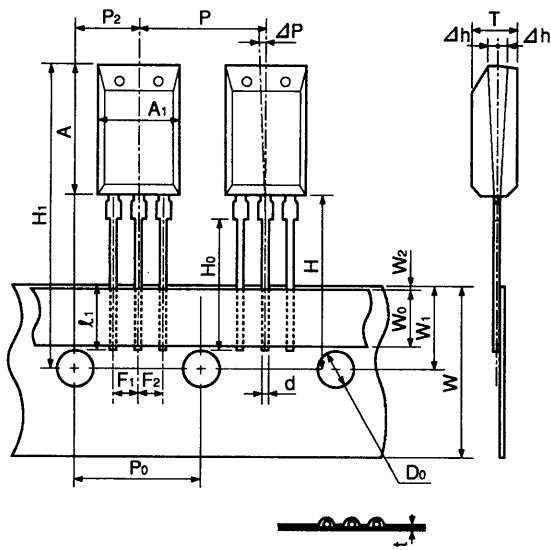
Test Circuit 2 : Switching Time



Test Circuit 3 : Gate Charge



Radial Tape Specification

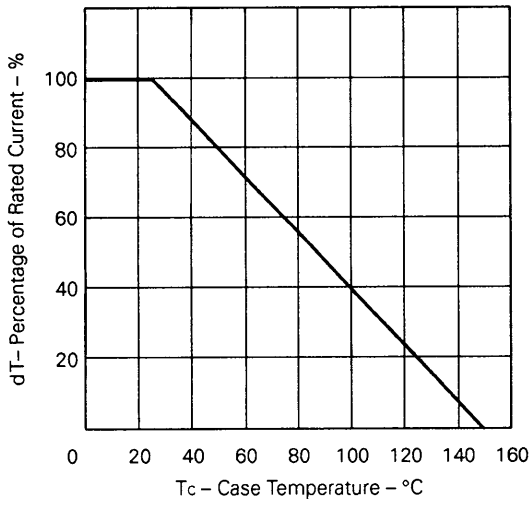


Dimension (unit : mm)

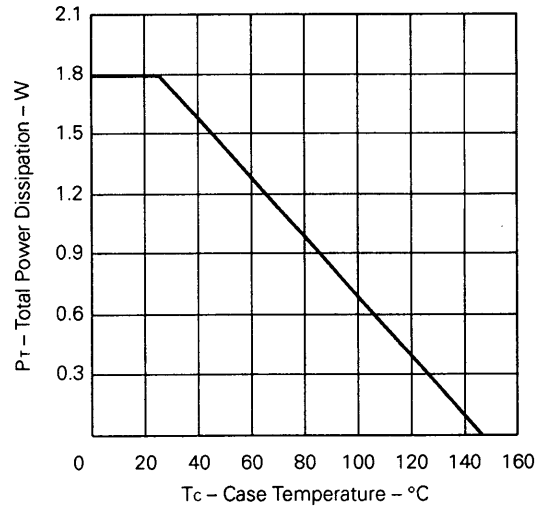
| Item | | |
|----------------------------------|------------|---|
| Component Body Length along Tape | A_1 | 8.0 ± 0.2 |
| Component Body Height | A | 13.0 ± 0.2 |
| Component Body Width | T | 4.5 ± 0.2 |
| Component Lead Width Dimension | d | 0.5 ± 0.1 |
| Lead Wire Enclosure | l_1 | 2.5 MIN. |
| Component Center Pitch | P | 12.7 ± 1.0 |
| Feedhole Pitch | P_0 | 12.7 ± 0.3 |
| Feedhole Center to Center Lead | P_2 | 6.35 ± 0.5 |
| Component Lead Pitch | F_1, F_2 | $2.5 \begin{matrix} + 0.4 \\ - 0.1 \end{matrix}$ |
| Deflection Front or Rear | Δh | ± 1.0 |
| Deflection Left or Right | ΔP | ± 1.3 |
| Carrier Strip Width | W | $18.0 \begin{matrix} + 1.0 \\ - 0.5 \end{matrix}$ |
| Adhesive Tape Width | W_0 | 5.0 MIN. |
| Feedhole Location | W_1 | 9.0 ± 0.5 |
| Adhesive Tape Position | W_2 | 0.7 MIN. |
| Height of Seating Plane | H_0 | 16.0 ± 0.5 |
| Feedhole to upper of Component | H_1 | 32.2 MAX. |
| Feedhole to Bottom of Component | H | 20.0 MAX. |
| Tape Feedhole Diameter | D_0 | 4.0 ± 0.2 |
| Overall Taped Package Thickness | t | 0.7 ± 0.2 |

TYPICAL CHARACTERISTICS ($T_a = 25^\circ\text{C}$)

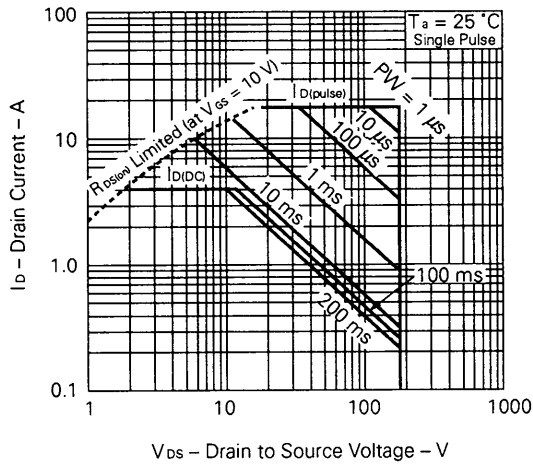
DERATING FACTOR OF FORWARD BIAS SAFE OPERATING AREA



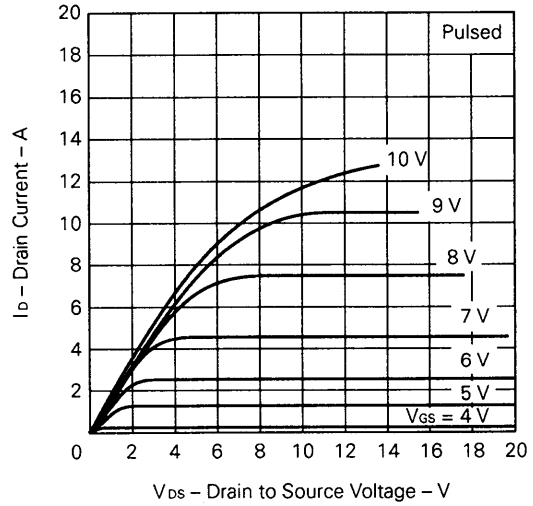
TOTAL POWER DISSIPATION vs. CASE TEMPERATURE



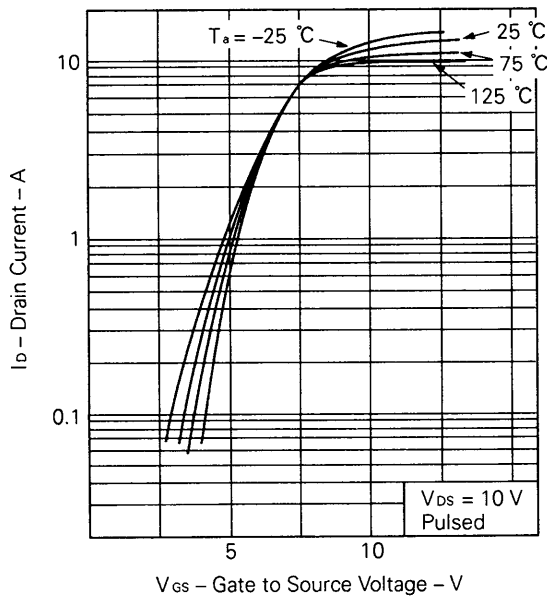
FORWARD BIAS SAFE OPERATING AREA



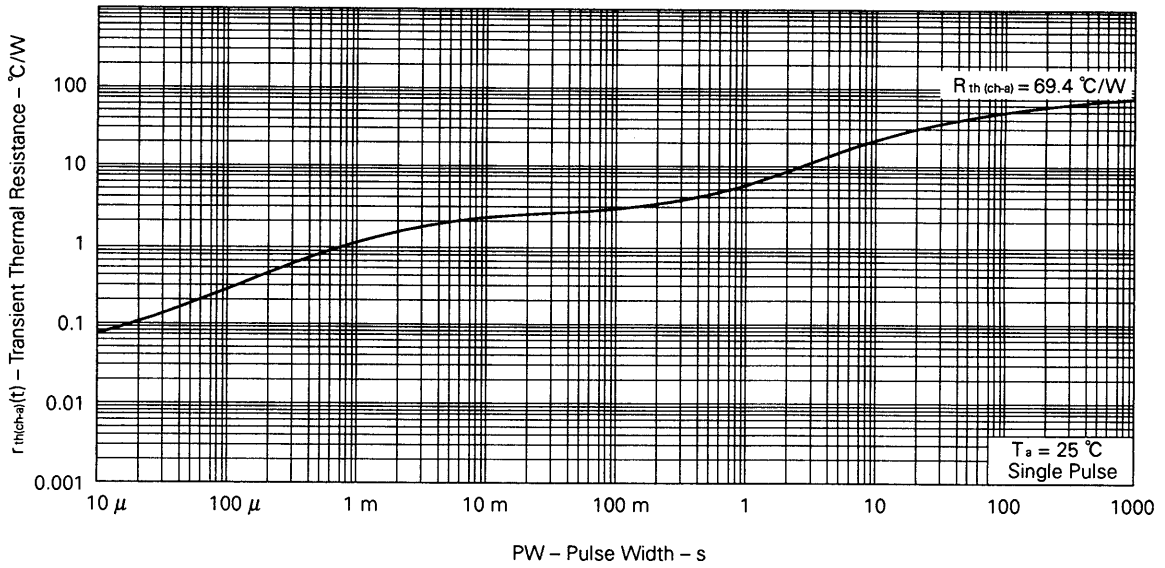
DRAIN CURRENT vs. DRAIN TO SOURCE VOLTAGE



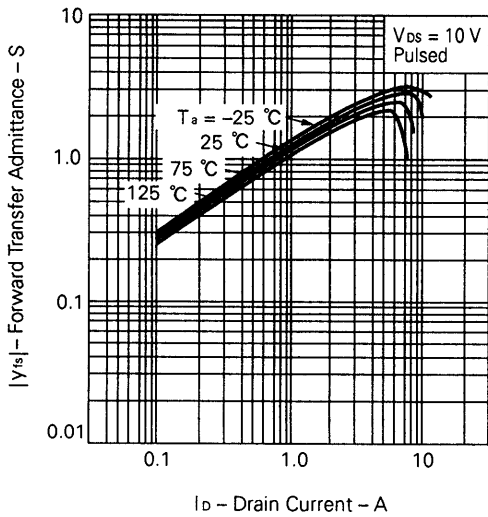
TRANSFER CHARACTERISTICS



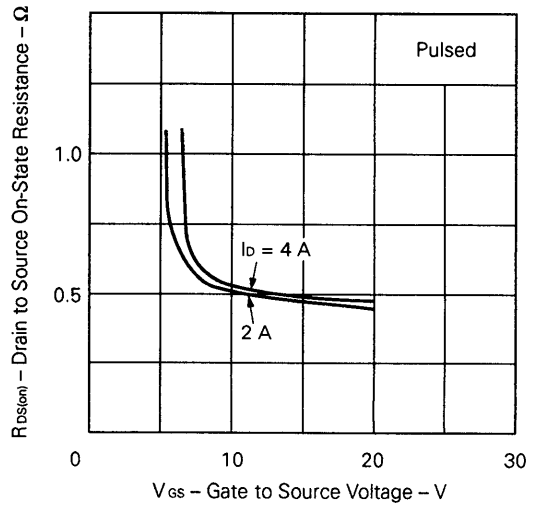
TRANSIENT THERMAL RESISTANCE vs. PULSE WIDTH



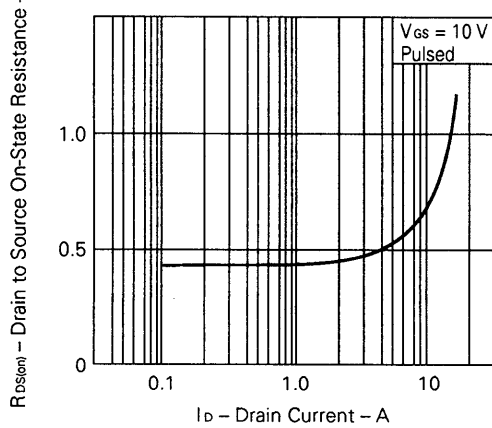
FORWARD TRANSFER ADMITTANCE vs. DRAIN CURRENT



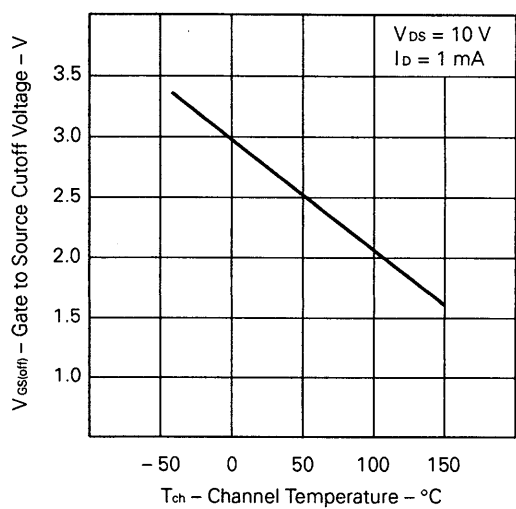
DRAIN TO SOURCE ON-STATE RESISTANCE vs. GATE TO SOURCE VOLTAGE



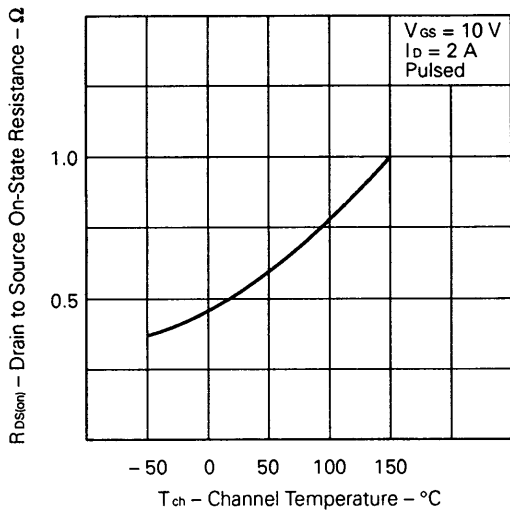
DRAIN TO SOURCE ON-STATE RESISTANCE vs. DRAIN CURRENT



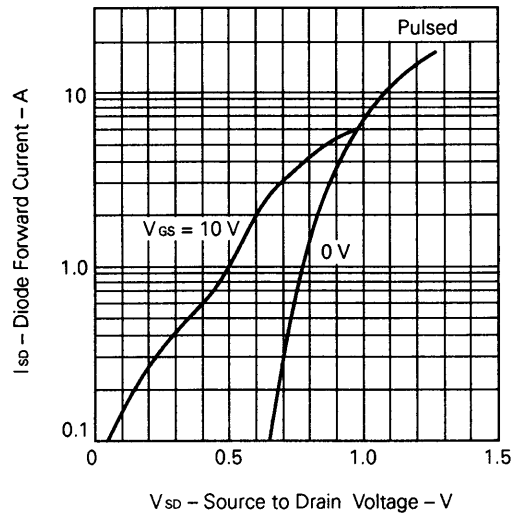
GATE TO SOURCE CUTOFF VOLTAGE vs. CHANNEL TEMPERATURE



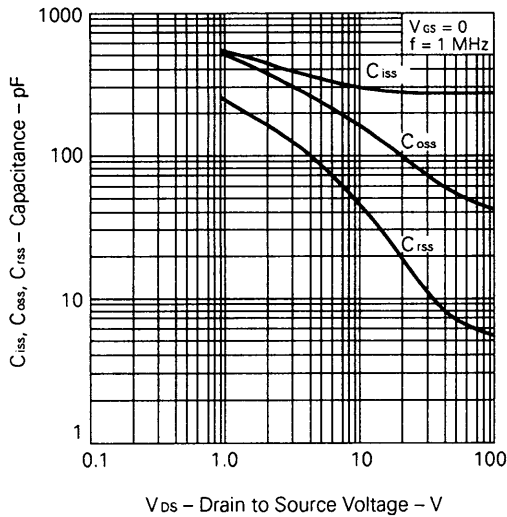
DRAIN TO SOURCE ON - STATE RESISTANCE vs. CHANNEL TEMPERATURE



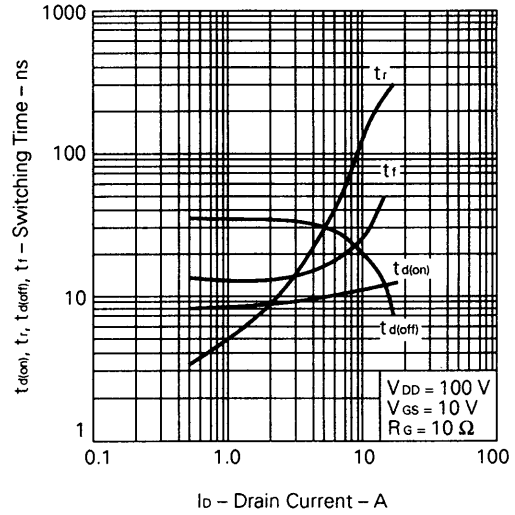
SOURCE TO DRAIN DIODE FORWARD VOLTAGE



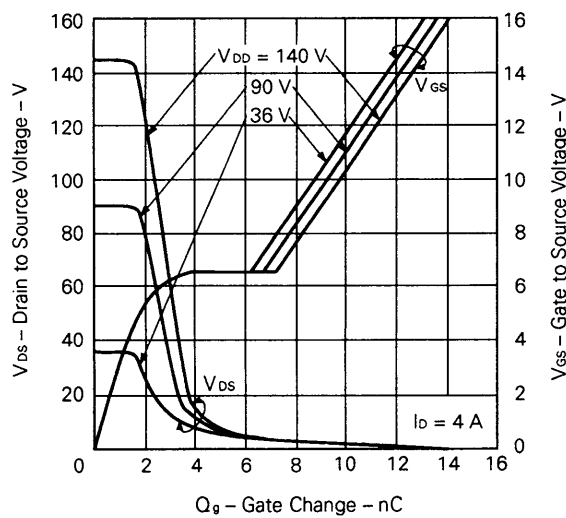
CAPACITANCE vs. DRAIN TO SOURCE VOLTAGE



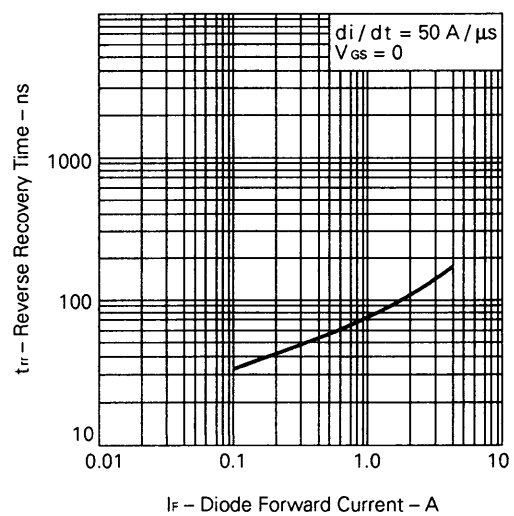
SWITCHING CHARACTERISTICS



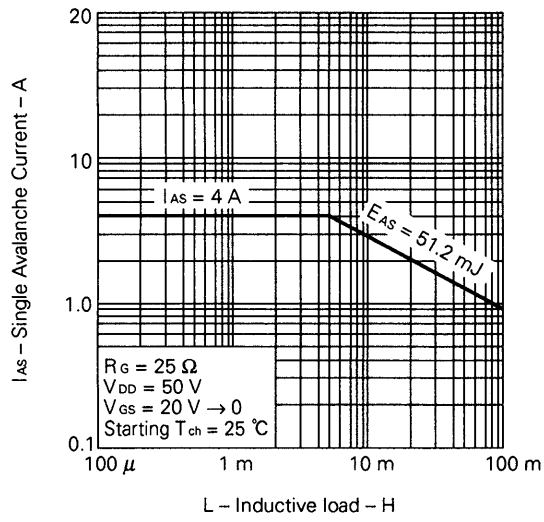
DYNAMIC INPUT CHARACTERISTICS



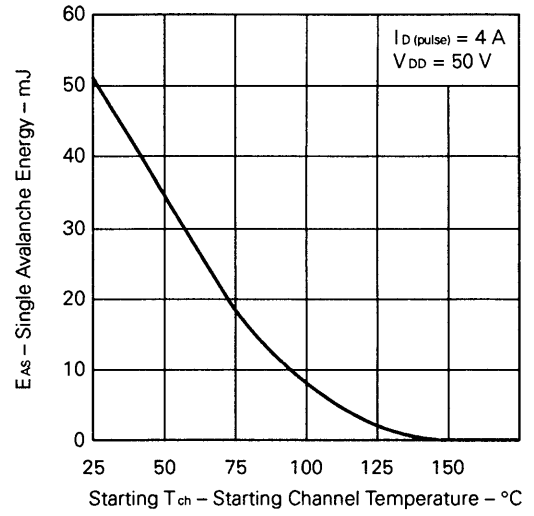
REVERSE RECOVERY TIME vs. DIODE FORWARD CURRENT



SINGLE AVALANCE CURRENT vs. INDUCTIVE LOAD



SINGLE AVALANCHE ENERGY vs. STARTING CHANNEL TEMPERATURE



[MEMO]

No part of this document may be copied or reproduced in any form or by any means without the prior written consent of NEC Corporation. NEC Corporation assumes no responsibility for any errors which may appear in this document.

NEC Corporation does not assume any liability for infringement of patents, copyrights or other intellectual property rights of third parties by or arising from use of a device described herein or any other liability arising from use of such device. No license, either express, implied or otherwise, is granted under any patents, copyrights or other intellectual property rights of NEC Corporation or others.

The devices listed in this document are not suitable for use in aerospace equipment, submarine cables, nuclear reactor control systems and life support systems. If customers intend to use NEC devices for above applications or they intend to use "Standard" quality grade NEC devices for applications not intended by NEC, please contact our sales people in advance.

Application examples recommended by NEC Corporation.

Standard: Computer, Office equipment, Communication equipment, Test and Measurement equipment, Machine tools, Industrial robots, Audio and Visual equipment, Other consumer products, etc.

Special: Automotive and Transportation equipment, Traffic control systems, Antidisaster systems, Anticrime systems, etc.



LittleDiode supplies new, hard to find or obsolete electronic components and semiconductors all over the world.

With over two million different components listed you are sure to find the part you need.

Feel free to visit us today at our online store:

LittleDiode.com

Looking forward to providing you with the best possible service.