

# SPECIFICATION

DEVICE NAME : Power MOSFET

TYPE NAME : 2SJ473-01L,S

SPEC. NO. :

Fuji Electric Co.,Ltd.

This Specification is subject to change without notice.

	DATE	NAME	APPROVED	Fuji Electric Co.,Ltd.	
DRAWN				DWG. NO.	
CHECKED					
					1/13

1.Scope This specifies Fuji Power MOSFET 2SJ473-01L,S

2.Construction P-Channel enhancement mode power MOSFET

3.Applications for Switching

4.Outview K-Pack L-Type : Outview See to 5/13 page  
S-Type : Outview See to 6/13 page

5.Absolute Maximum Ratings at Tc=25°C (unless otherwise specified)

Description	Symbol	Characteristics	Unit	Remarks
Drain-Source Voltage	V <sub>DS</sub>	-60	V	
Continuous Drain Current	I <sub>D</sub>	±7	A	
Pulsed Drain Current	I <sub>DP</sub>	±28	A	
Gate-Source Voltage	V <sub>GS</sub>	±20	V	
Maximum Avalanche Energy	E <sub>AV</sub>	141.8	mJ	*1
Maximum Power Dissipation	P <sub>D</sub>	20	W	
Operating and Storage	T <sub>ch</sub>	150	°C	
Temperature range	T <sub>stg</sub>	-55 to +150	°C	

\*1 L=3.86mH,Vcc=-24V

6.Electrical Characteristics at Tc=25°C (unless otherwise specified)

Static Ratings

Description	Symbol	Conditions	min.	typ.	max.	Unit
Drain-Source Breakdown Voltage	BV <sub>DSS</sub>	I <sub>D</sub> =-1mA V <sub>GS</sub> =0V	-60			V
Gate Threshold Voltage	V <sub>GS(th)</sub>	I <sub>D</sub> =-1mA V <sub>DS</sub> =V <sub>GS</sub>	-1.0	-1.5	-2.5	V
Zero Gate Voltage Drain Current	I <sub>DSS</sub>	V <sub>DS</sub> =-60V V <sub>GS</sub> =0V		-10	-500	μA
		T <sub>ch</sub> =25°C				
		T <sub>ch</sub> =125°C		-0.2	-1.0	mA
Gate-Source Leakage Current	I <sub>GSS</sub>	V <sub>GS</sub> =±20V V <sub>DS</sub> =0V		10	100	nA
Drain-Source On-State Resistance	R <sub>DS(on)</sub>	I <sub>D</sub> =-3.5A		260	350	mΩ
		V <sub>GS</sub> =-4V				
		V <sub>GS</sub> =-10V		150	200	

### Dynamic Ratings

Description	Symbol	Conditions	min.	typ.	max.	Unit
Forward Transconductance	$g_{fs}$	$I_D = -3.5A$ $V_{DS} = -25V$	2.5	5.0		S
Input Capacitance	$C_{iss}$	$V_{DS} = -25V$		550	830	pF
Output Capacitance	$C_{oss}$	$V_{GS} = 0V$		200	300	
Reverse Transfer Capacitance	$C_{rss}$	$f = 1MHz$		110	170	
Turn-On Time	$t_{d(on)}$	$V_{cc} = -30V$		10	15	ns
	$t_r$	$V_{GS} = -10V$		20	30	
Turn-Off Time	$t_{d(off)}$	$I_D = -7A$		60	90	
	$t_f$	$R_{GS} = 10\Omega$		25	50	

### Reverse Diode

Description	Symbol	Conditions	min.	typ.	max.	Unit
Avalanche Capability	$I_{AV}$	$L = 100\mu H$ $T_{ch} = 25^\circ C$ See Fig.1 and Fig.2	-7			A
Diode Forward On-Voltage	$V_{SD}$	$I_F = 2 \times I_{DR}$ $V_{GS} = 0V$ $T_{ch} = 25^\circ C$		-2.5	-3.8	V
Reverse Recovery Time	$t_{rr}$	$I_F = I_{DR}$		110		ns
Reverse Recovery Charge	$Q_{rr}$	$di/dt = 100A/\mu s$ $T_{ch} = 25^\circ C$		0.5		$\mu C$

### 7. Thermal Resistance

Description	Symbol	min.	typ.	max.	Unit
Channel to Case	$R_{th(ch-c)}$			6.25	$^\circ C/W$
Channel to Ambient	$R_{th(ch-a)}$			150	$^\circ C/W$

Fig.1 Test circuit

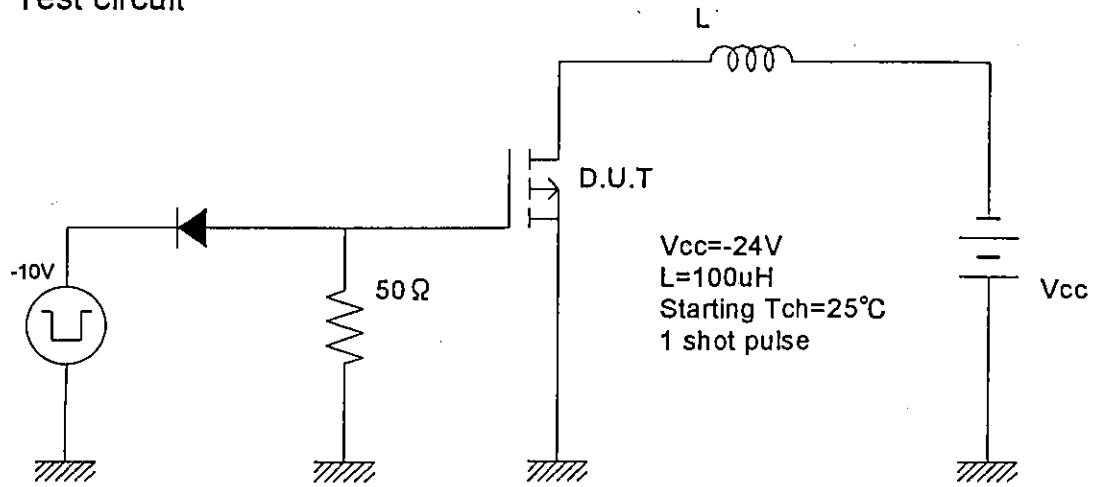
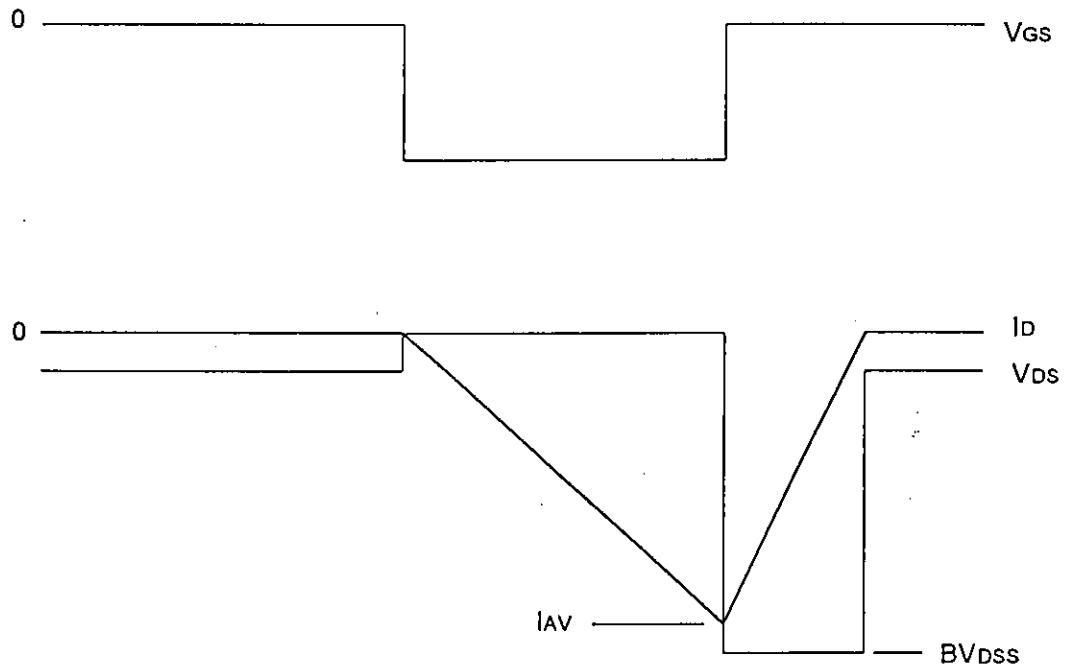
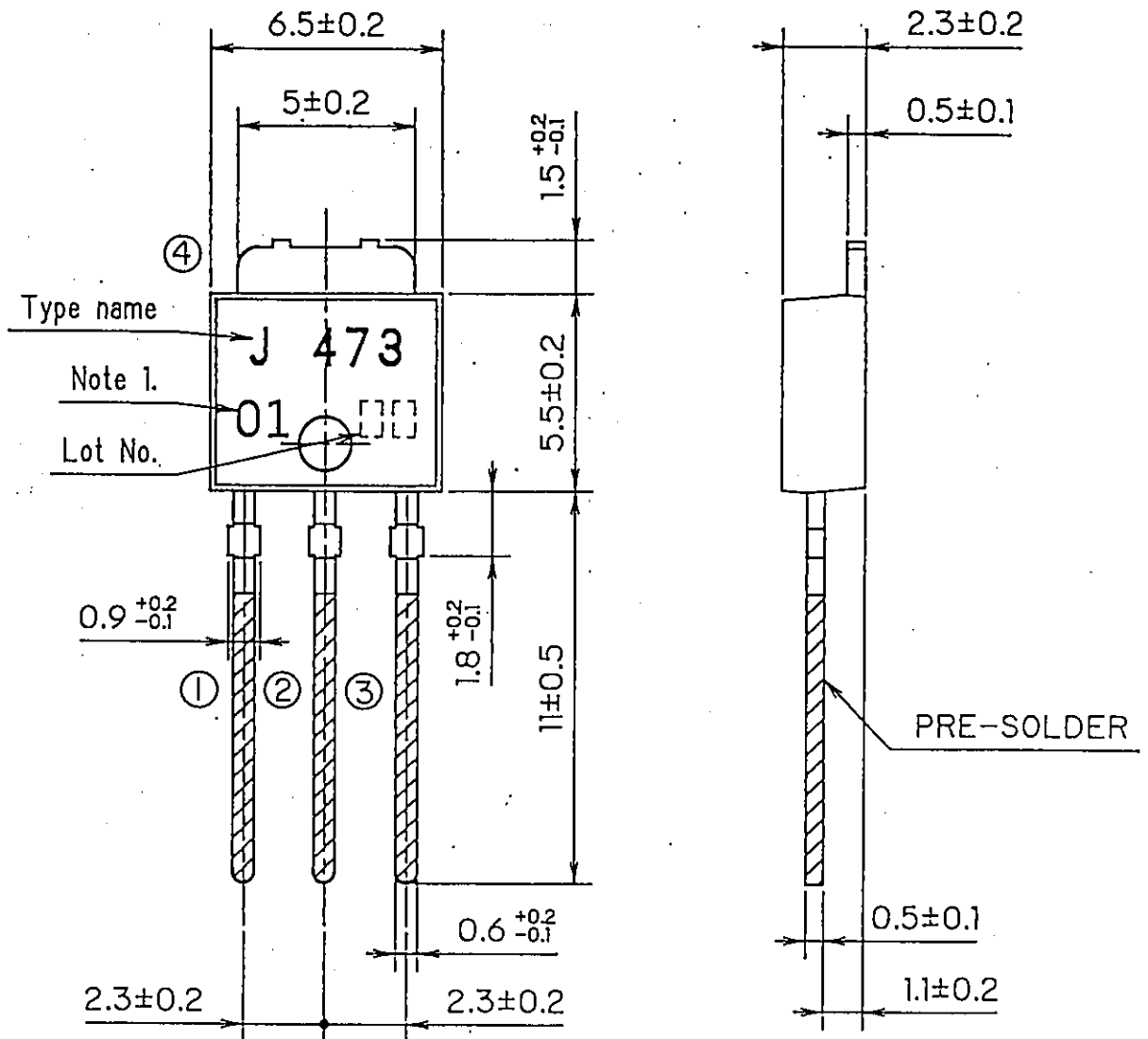


Fig.2 Operating waveforms



MOSFET Type : 2SJ473-01L

OUT VIEW



CONNECTION

- ① GATE
- ②④ DRAIN
- ③ SOURCE

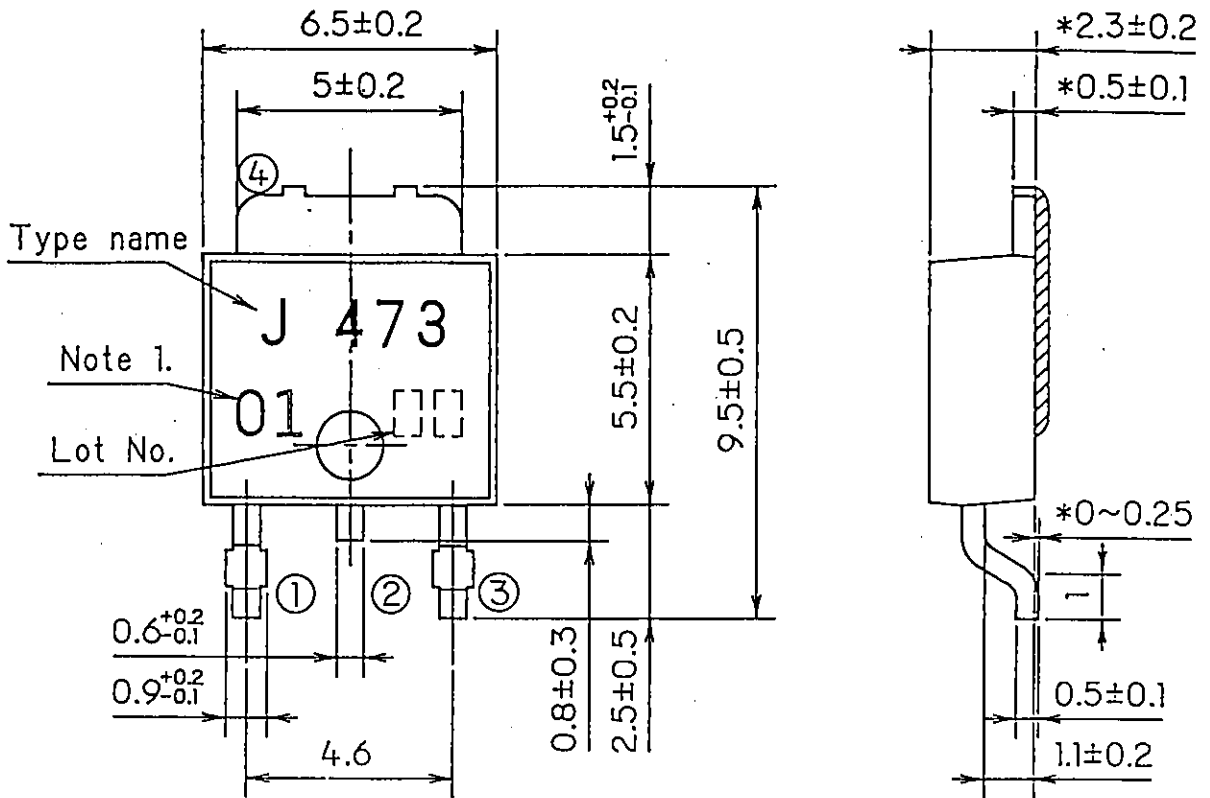
JEDEC:TO-252  
EIAJ:SC-64

Note 1. Guaranteed mark of avalanche ruggedness.

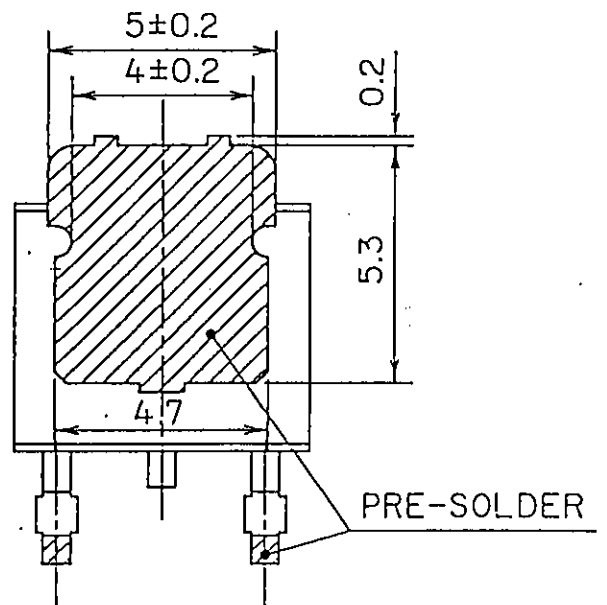
DIMENSIONS ARE IN MILLIMETERS.

MOSFET Type : 2SJ473-01S

OUT VIEW



BACK VIEW



CONNECTION

- ① GATE
- ②④ DRAIN
- ③ SOURCE

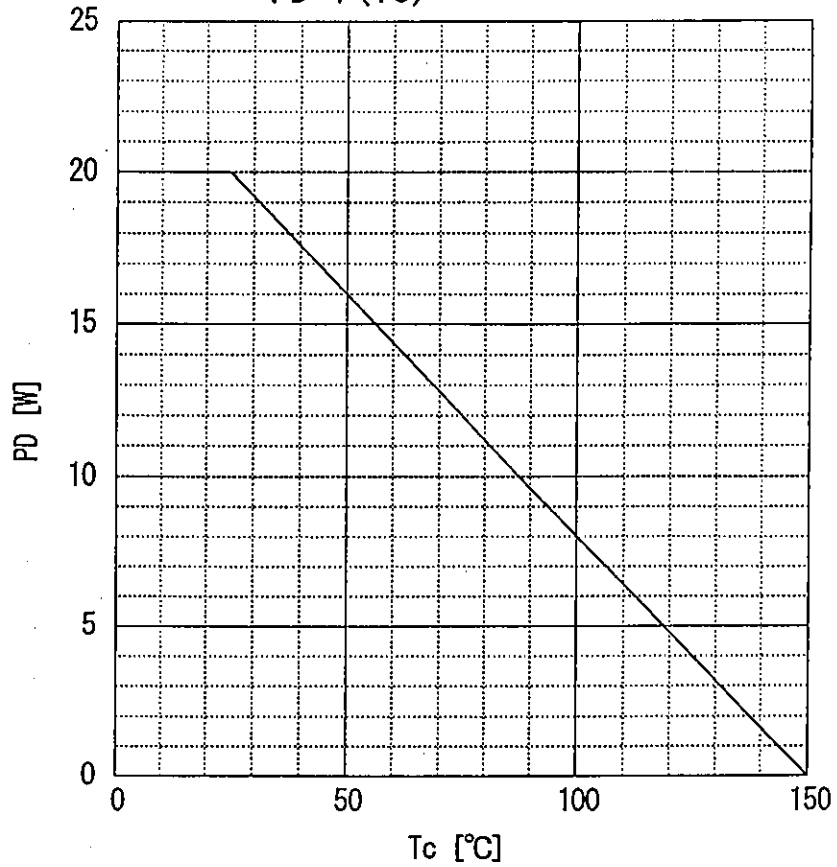
JEDEC:T0-252  
EIAJ:SC-63

Dimension of \* marks are excluded the thickness solder.

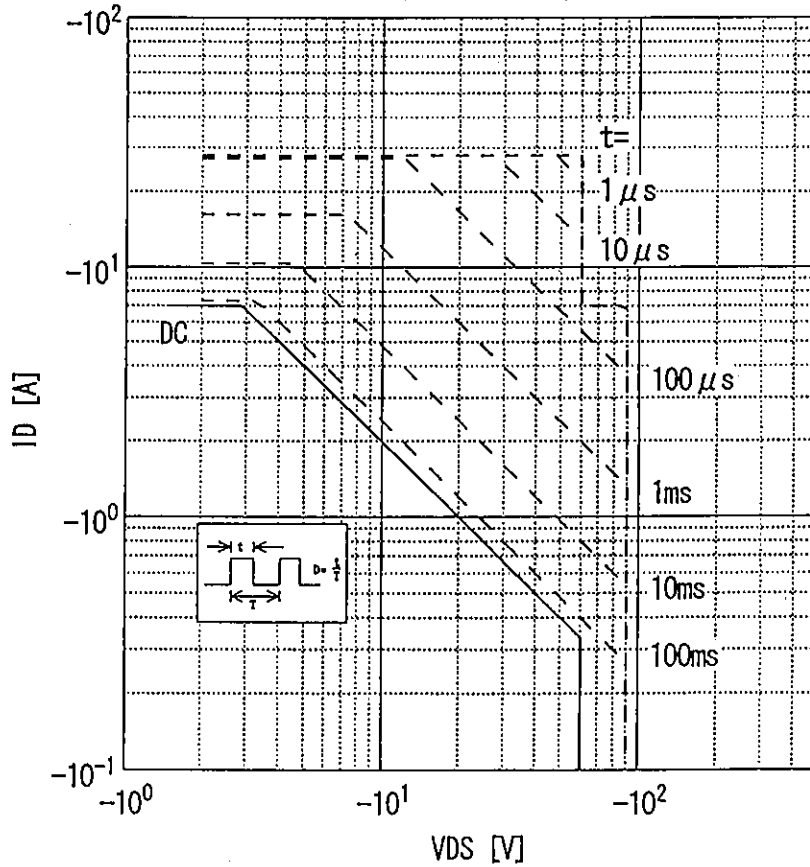
Note 1. Guaranteed mark of avalanche ruggedness.

DIMENSIONS ARE IN MILLIMETERS.

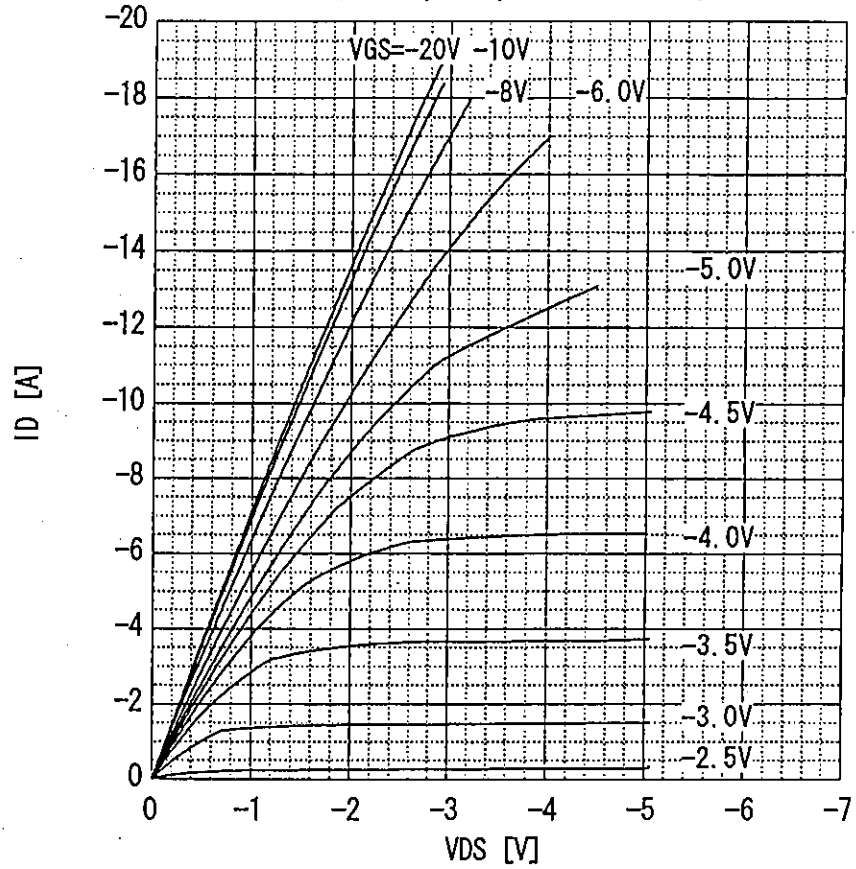
Power Dissipation  
 $PD=f(T_c)$



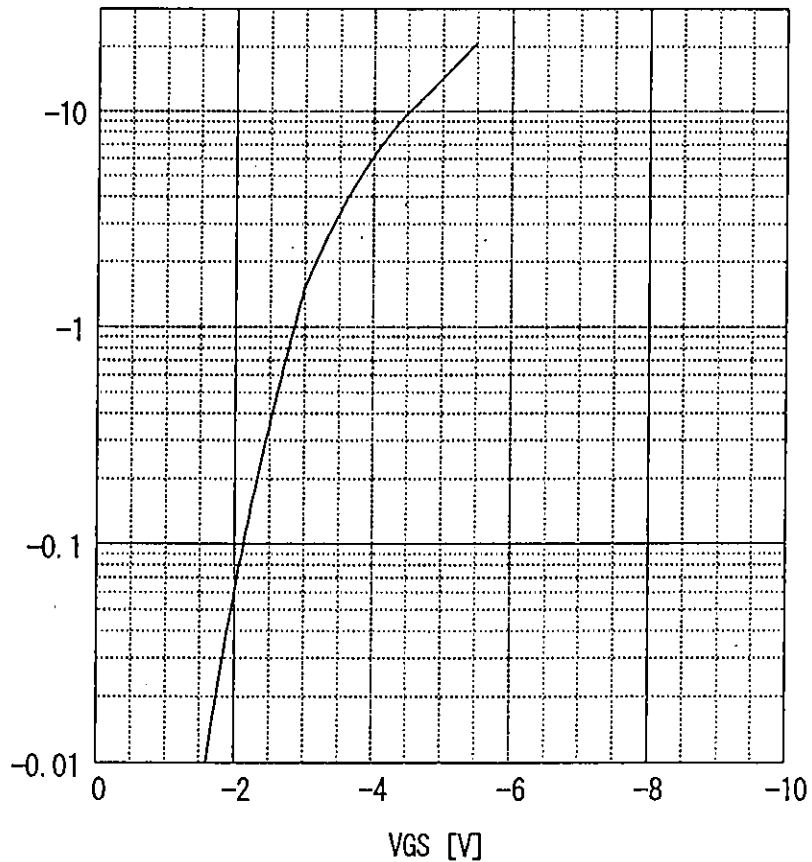
Safe operating area  
 $ID=f(V_{DS}) : D=0.01, T_c=25^\circ C$



Typical output characteristics  
 $I_D = f(V_{DS})$  : 80  $\mu$ s pulse test,  $T_c = 25^\circ\text{C}$

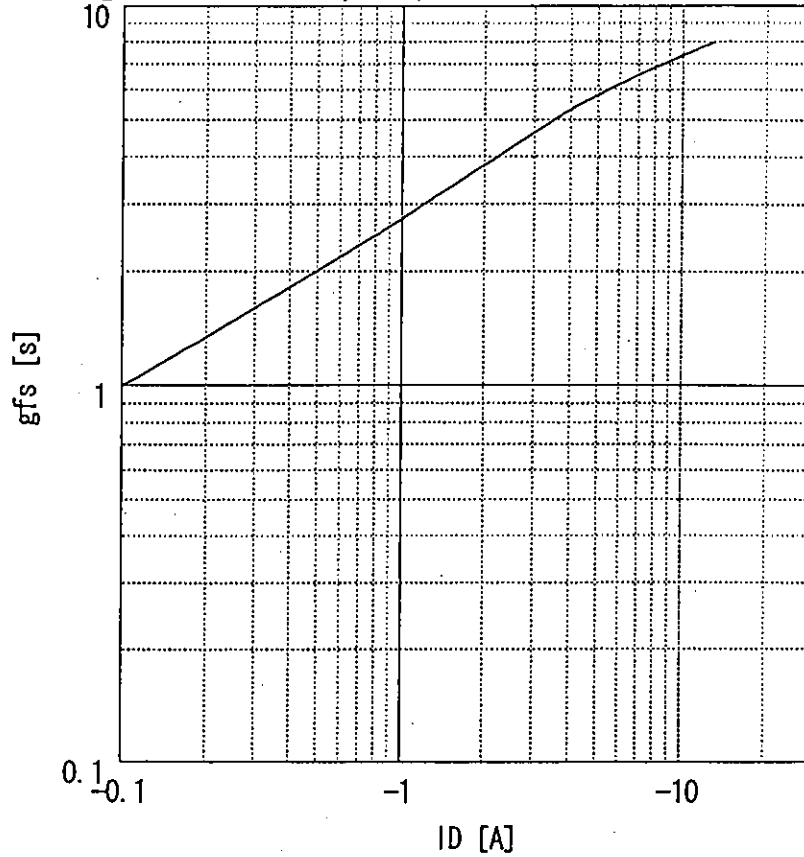


Typical transfer characteristic  
 $I_D = f(V_{GS})$  : 80  $\mu$ s pulse test,  $V_{DS} = -25\text{V}$ ,  $T_{ch} = 25^\circ\text{C}$



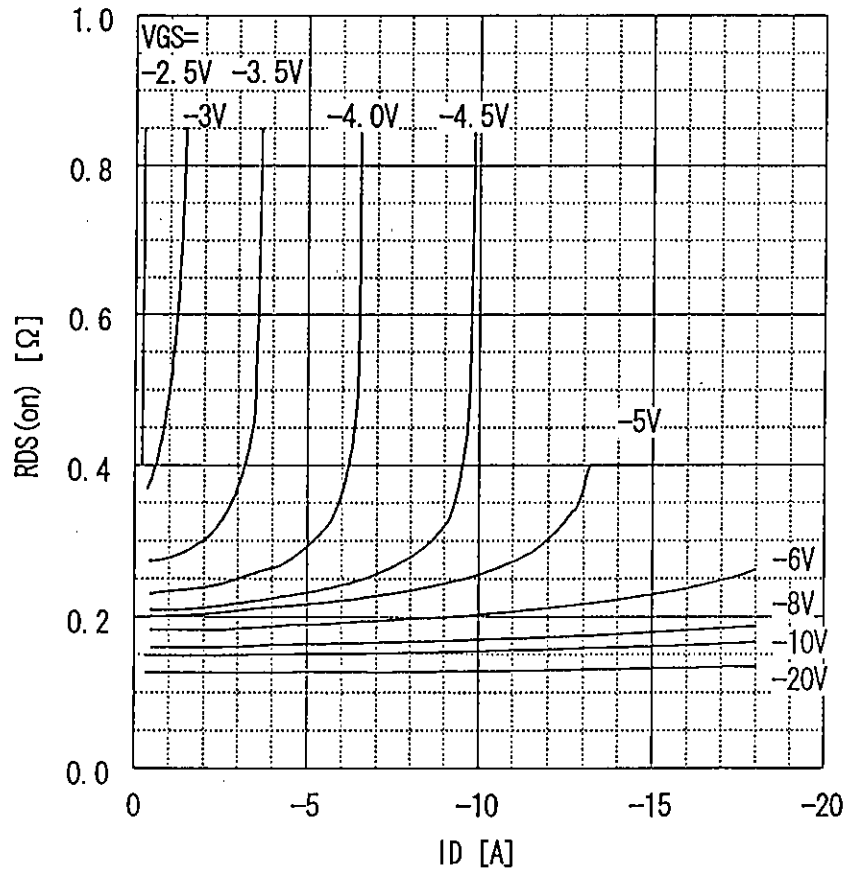
Typical forward transconductance

$g_{fs}=f(I_D)$ : 80  $\mu$ s pulse test,  $V_{DS}=-25V$ ,  $T_{ch}=25^\circ C$

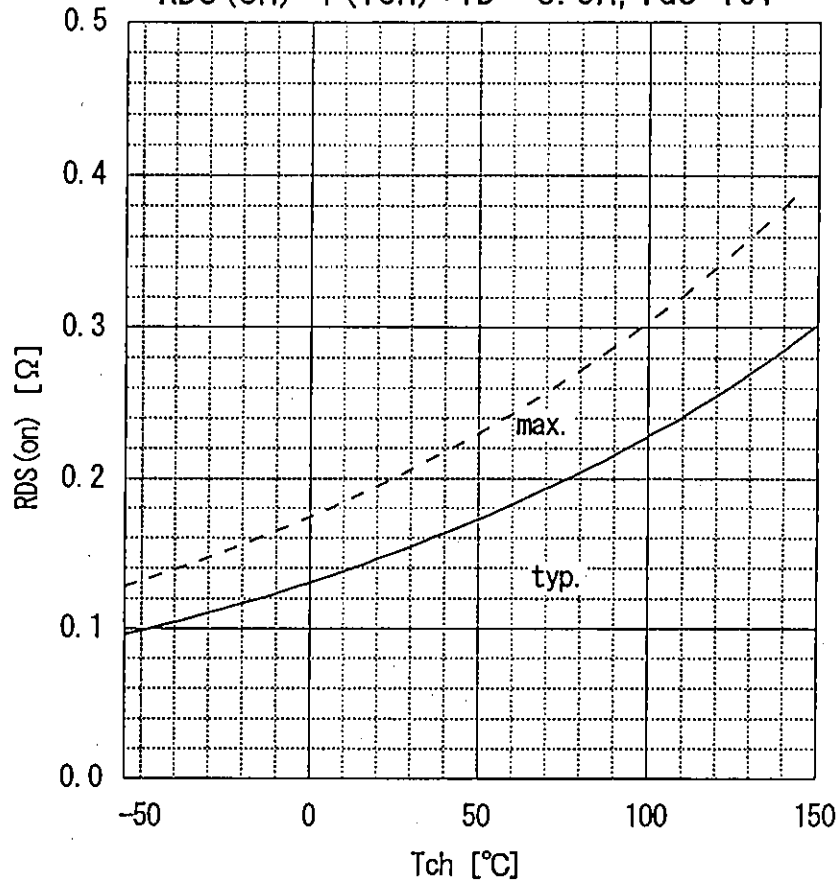


Typical drain-source on-state resistance

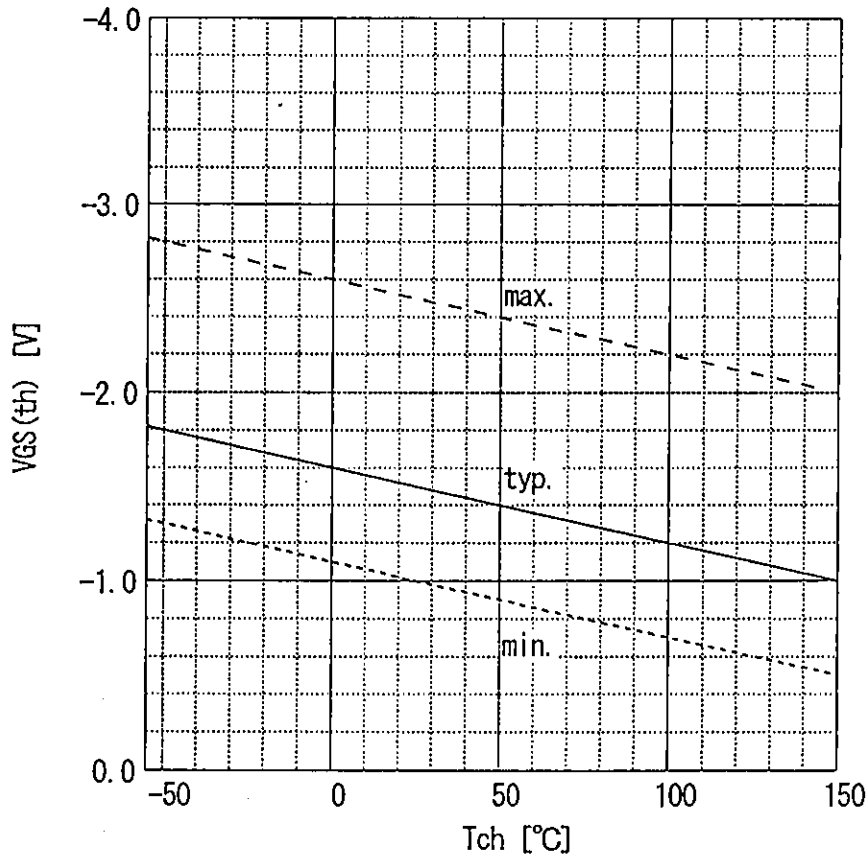
$R_{DS(on)}=f(I_D)$ : 80  $\mu$ s pulse test,  $T_c=25^\circ C$



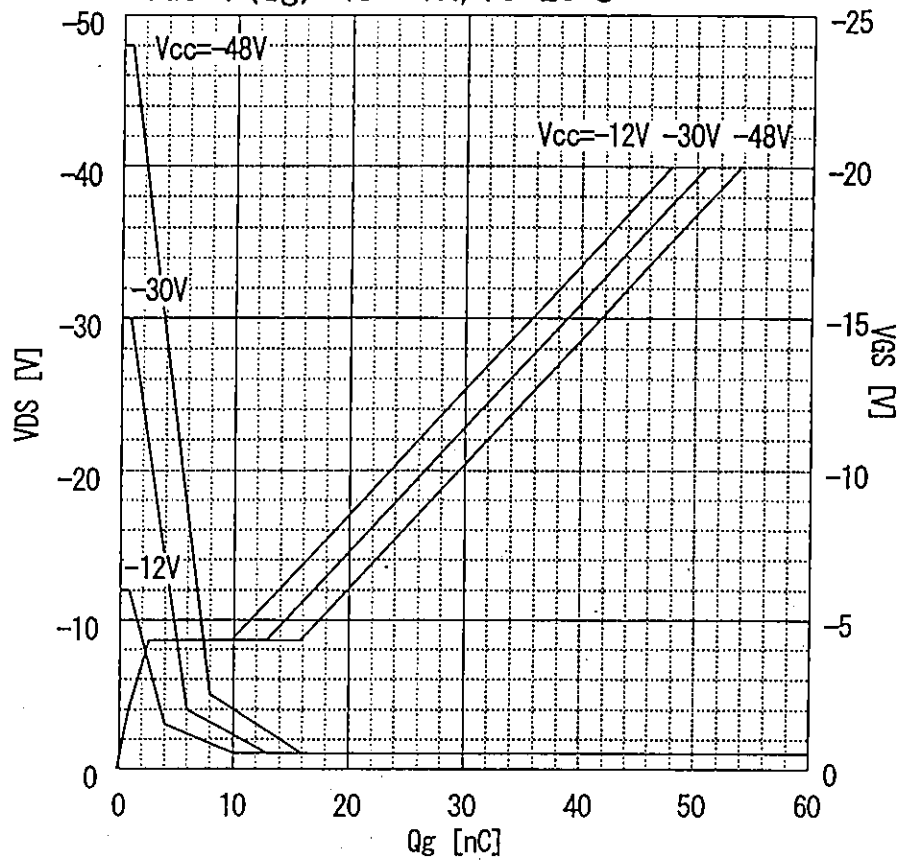
Drain-source on-state resistance  
 $R_{DS(on)} = f(T_{ch}) : I_D = -3.5A, V_{GS} = 10V$



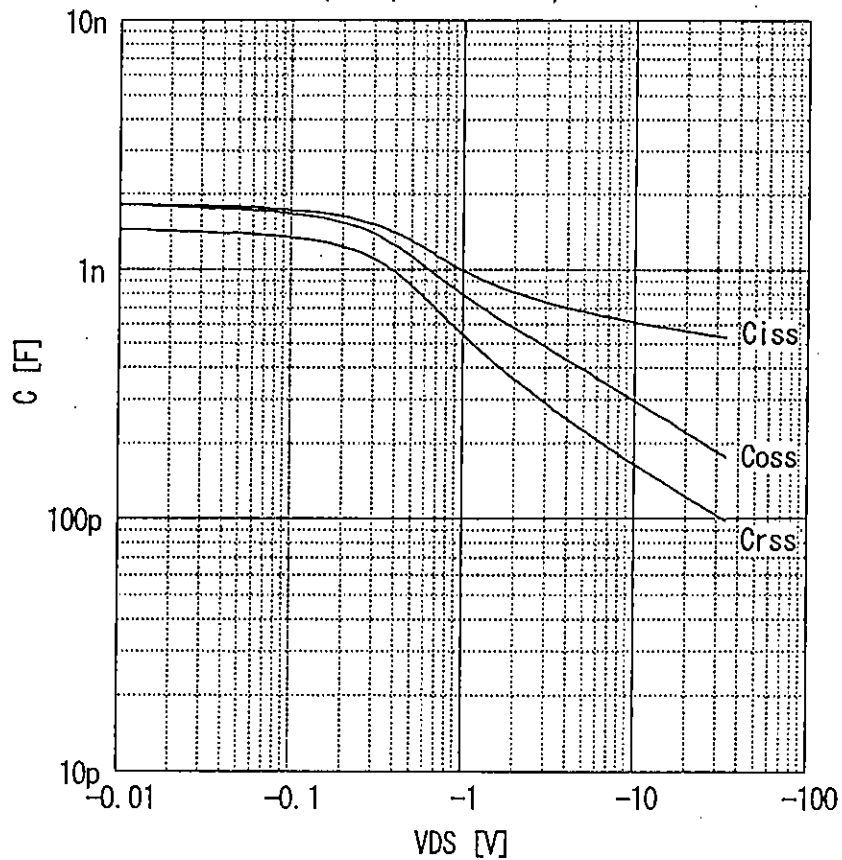
Gate threshold voltage  
 $V_{GS(th)} = f(T_{ch}) : I_D = -1mA, V_{DS} = V_{GS}$



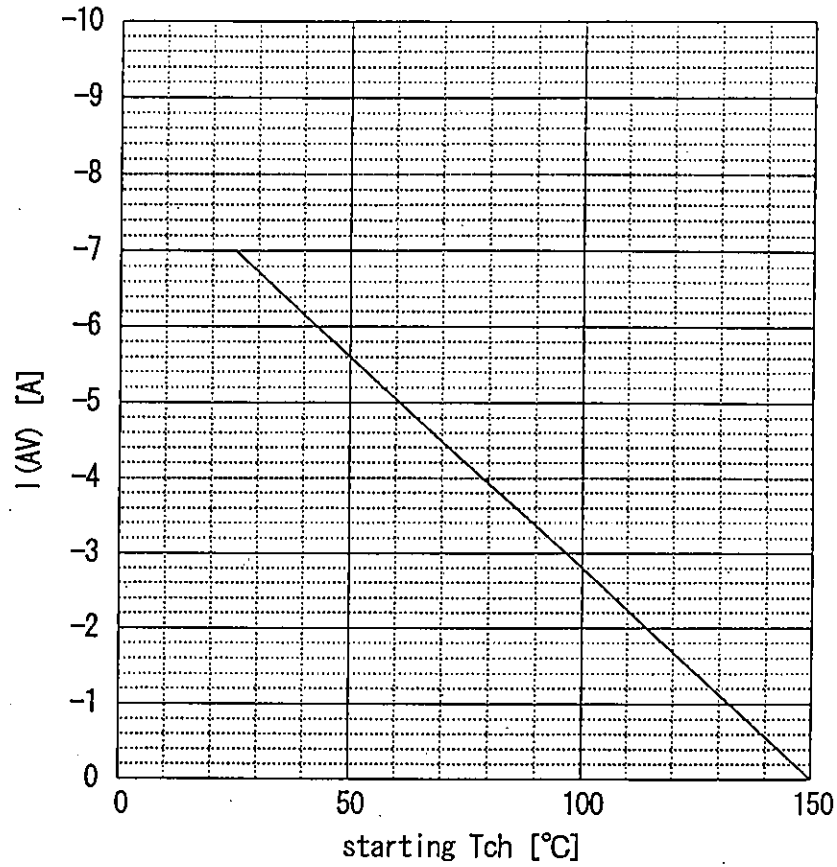
Typical gate charge characteristic  
 $V_{GS} = f(Q_g) : I_D = -7A, T_c = 25^\circ C$



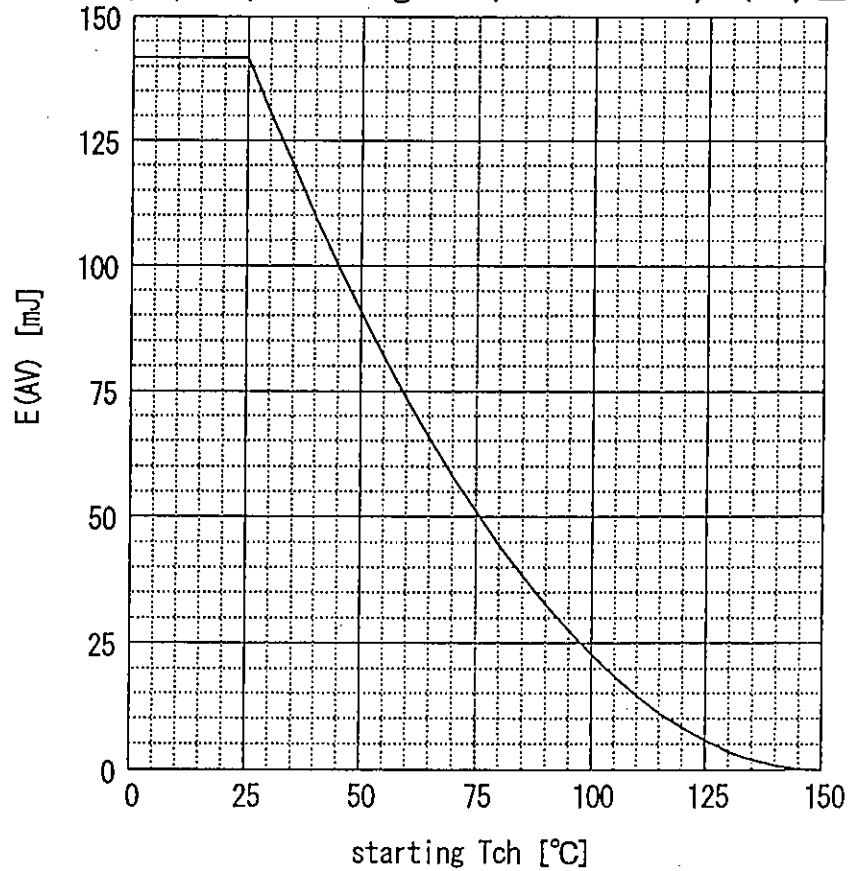
Typical capacitances  
 $C = f(V_{DS}) : V_{GS} = 0V, f = 1MHz$



Maximum Avalanche Current vs. starting Tch  
 $I(AV) = f(\text{starting Tch})$



Maximum Avalanche Energy vs. starting Tch  
 $E(AV) = f(\text{starting Tch}) : V_{CC} = -24V, I(AV) \geq -7A$





LittleDiode supplies new, hard to find or obsolete electronic components and semiconductors all over the world.

With over two million different components listed you are sure to find the part you need.

Feel free to visit us today at our online store:

[LittleDiode.com](http://LittleDiode.com)

Looking forward to providing you with the best possible service.