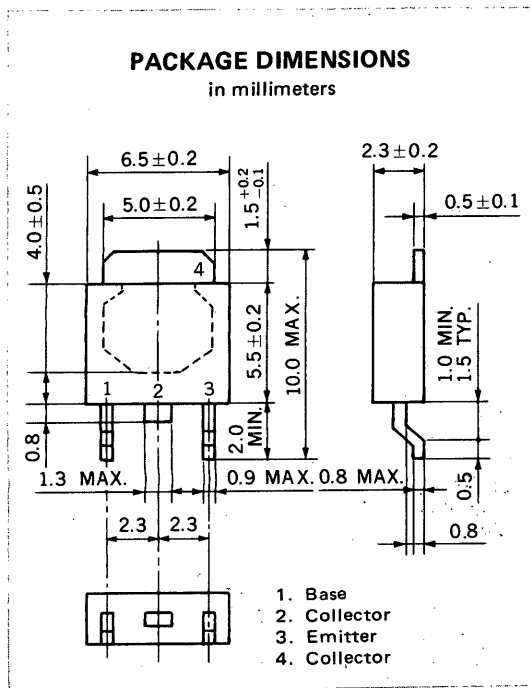


NPN SILICON EPITAXIAL TRANSISTOR
MP-3

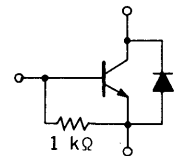
DESCRIPTION

2SD992-Z is designed for Audio Frequency Amplifier and Switching, especially in Hybrid Integrated Circuits.



FEATURES

- Low $V_{CE(sat)}$: $V_{CE(sat)} = 0.3$ V TYP.
- B-E Resistor, Built-in
- Complement to 2SB962-Z



ABSOLUTE MAXIMUM RATINGS

Maximum Voltages and Currents ($T_a = 25^\circ\text{C}$)

Collector to Base Voltage	V_{CBO}	30	V
Collector to Emitter Voltage	V_{CEO}	30	V
Emitter to Base Voltage	V_{EBO}	5	V
Collector Current (DC)	I_C	2	A
Collector Current (Pulse)*	I_C	3	A

Maximum Power Dissipation

Total Power Dissipation at 25°C Ambient Temperature**	P_T	2.0	W
--	-------	-----	---

Maximum Temperatures

Junction Temperature	T_j	150	$^\circ\text{C}$
Storage Temperature Range	T_{stg}	-55 to +150	$^\circ\text{C}$

* $PW \leq 10$ ms, Duty Cycle $\leq 50\%$

**When mounted on ceramic substrate of $2.5\text{ cm}^2 \times 0.7\text{ mm}$

ELECTRICAL CHARACTERISTICS ($T_a = 25^\circ\text{C}$)

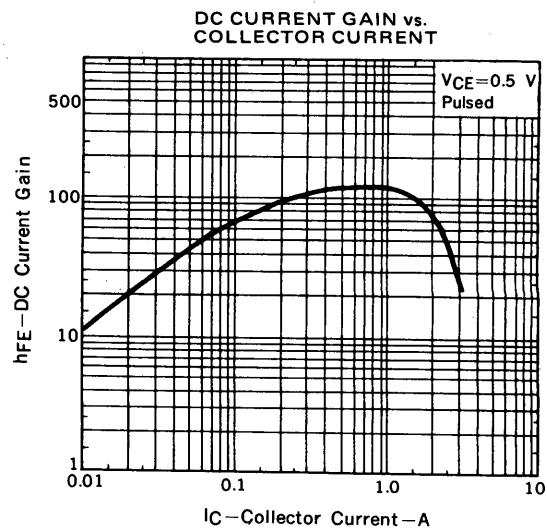
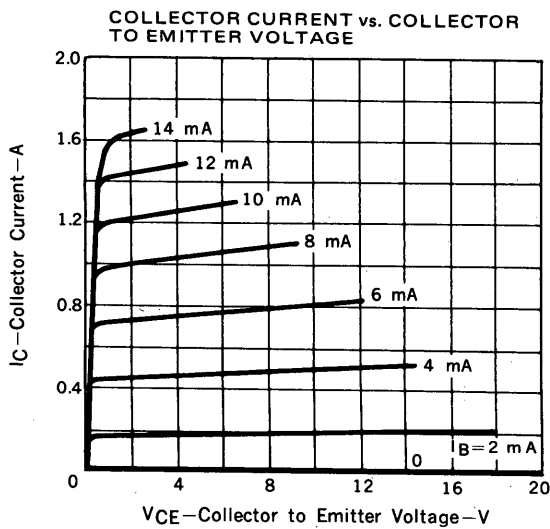
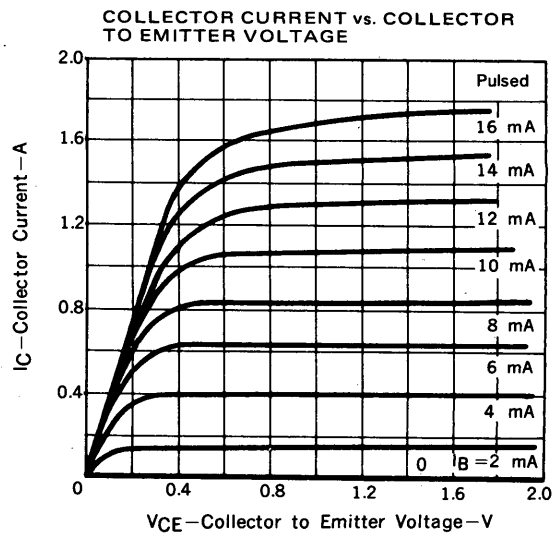
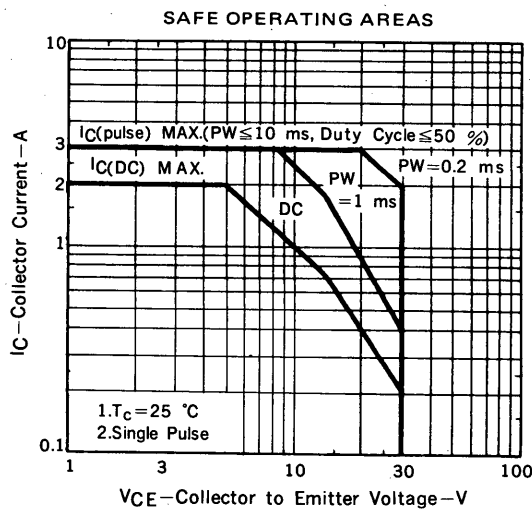
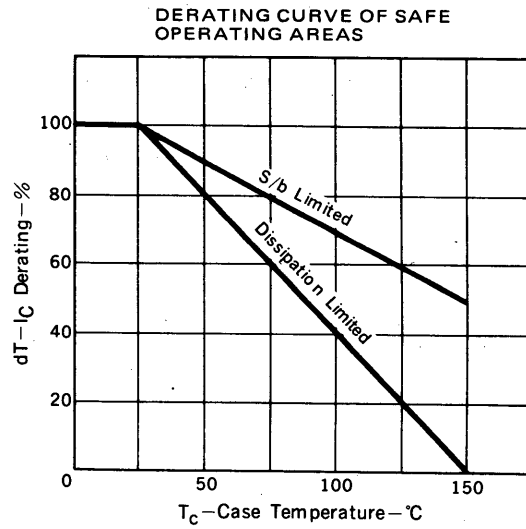
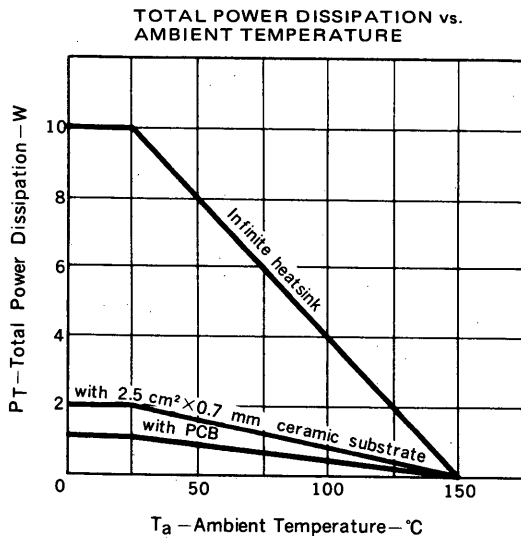
CHARACTERISTIC	SYMBOL	MIN.	TYP.	MAX.	UNIT	TEST CONDITIONS
Collector Cutoff Current	I_{CBO}			10	μA	$V_{CB} = 20\text{ V}, I_E = 0$
DC Current Gain	h_{FE1}^{***}	35		200		$V_{CE} = 0.5\text{ V}, I_C = 0.1\text{ A}$
DC Current Gain	h_{FE2}^{***}	50				$V_{CE} = 0.5\text{ V}, I_C = 2.0\text{ A}$
Collector Saturation Voltage	$V_{CE(sat)}^{***}$		0.3	0.5	V	$I_C = 2.0\text{ A}, I_B = 40\text{ mA}$
Base Saturation Voltage	$V_{BE(sat)}^{***}$		0.95	1.5	V	$I_C = 2.0\text{ A}, I_B = 40\text{ mA}$

***Pulsed: $PW \leq 350\ \mu\text{s}$, Duty Cycle $\leq 2\%$

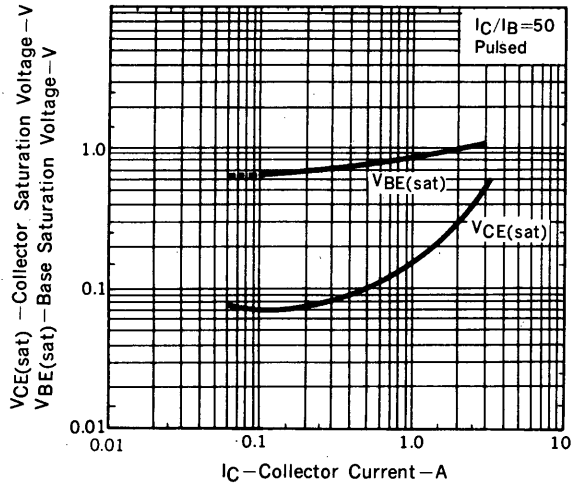
h_{FE} Classification

MARKING	N	M	L	K
h_{FE1}	35 to 80	60 to 120	80 to 120	100 to 200

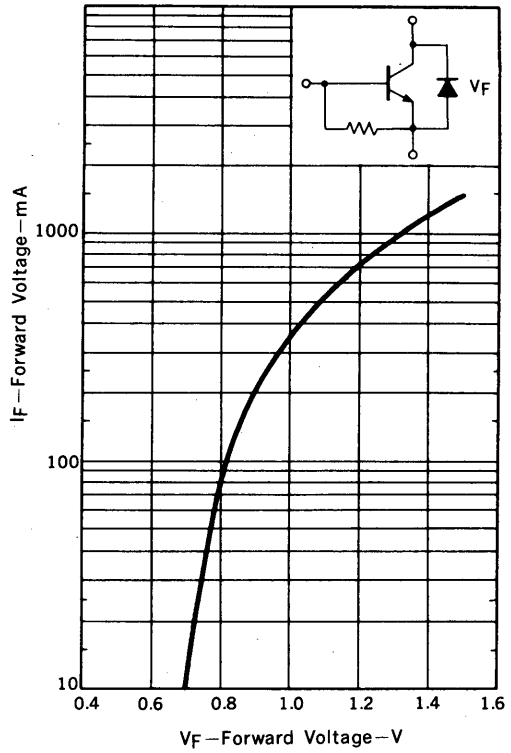
TYPICAL CHARACTERISTICS ($T_a = 25^\circ\text{C}$)



BASE AND COLLECTOR SATURATION VOLTAGE vs. COLLECTOR CURRENT



FORWARD CURRENT vs. FORWARD VOLTAGE



NEC Corporation

INTERNATIONAL ELECTRON DEVICES DIV.
SUMITOMO MITA Building, 37-8,
Shiba Gochome, Minato-ku, Tokyo 108, Japan
Tel: Tokyo 456-3111
Telex Address: NECTOK J22686
Cable Address: NEC TOKYO

TC-1666
JULY-10-85M
Printed in Japan



LittleDiode supplies new, hard to find or obsolete electronic components and semiconductors all over the world.

With over two million different components listed you are sure to find the part you need.

Feel free to visit us today at our online store:

LittleDiode.com

Looking forward to providing you with the best possible service.