

AN6308, AN6308S

Analog Switch ICs for VCR

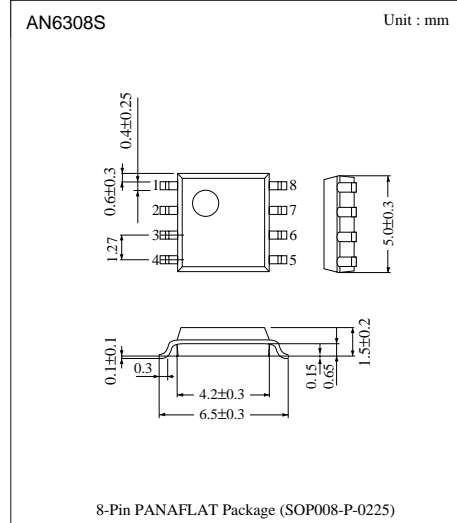
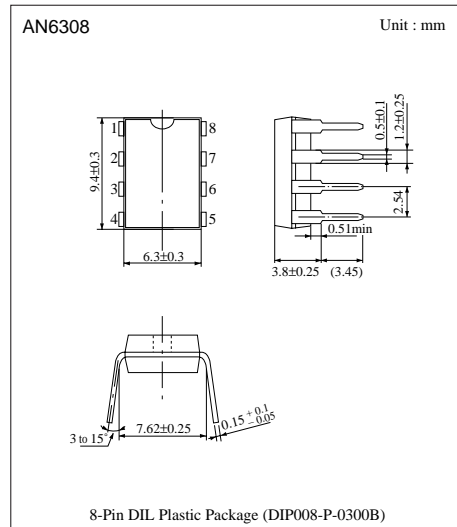
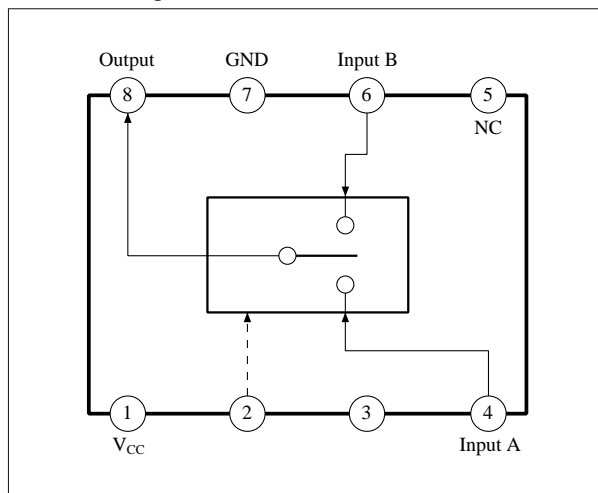
■ Overview

The AN6308 and the AN6308S are integrated circuits designed for video band analog switching.

■ Features

- Good frequency response : 10MHz flat
- High speed switching : 70ns typ.
- Low power consumption : 13mW typ.
- Supply voltage : 5V

■ Block Diagram



■ Pin Descriptions

Pin No.	Pin name
1	V _{CC}
2	Select
3	Bias
4	Input A
5	NC
6	Input B
7	GND
8	Output

■ Absolute Maximum Ratings (Ta = 25°C)

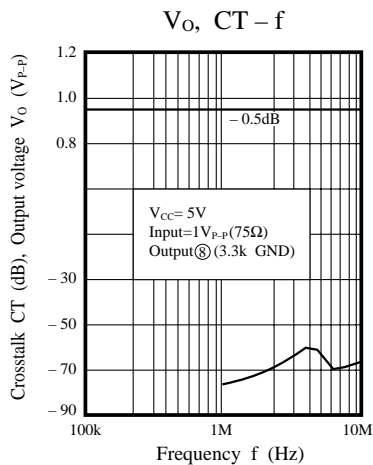
Parameter	Symbol	Rating	Unit
Supply voltage	V _{CC}	6.0	V
Power dissipation	P _D	30	mW
Operating ambient temperature	T _{opr}	- 20 to + 70	°C
Storage temperature	AN6308	T _{stg}	°C
	AN6308S		

■ Electrical Characteristics (V_{CC} = 5V, Ta = 25°C ± 2°C)

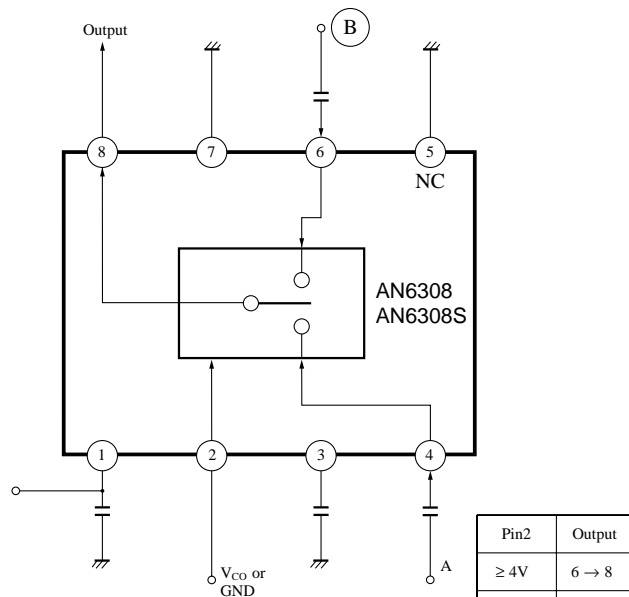
Parameter	Symbol	Condition	min	typ	max	Unit
Circuit current	I ₁		1.6	—	3.7	mA
Cross talk	CT ₈	f = 4MHz/1V _{P-P}	—	—	-50	dB
SW level difference	V _{O (offset)}		—	—	10	mV
Select sensitivity (A)	S _{(2) 4}		—	—	1.0	V
Select sensitivity (A)	S _{(2) 6}		4.0	—	—	V

Note) Operating supply voltage range V_{CC} (crp.) = 4.5V to 5.5V

■ Characteristics Curve



■ Application Circuit



- (1) Max. input 2.0V_{P-P} typ. (V_{CC} = 5V)
- (2) 4 6 Z_{in} = 5kΩ (typ.)
- (3) Output emitter follower, Current 2mA max.



LittleDiode supplies new, hard to find or obsolete electronic components and semiconductors all over the world.

With over two million different components listed you are sure to find the part you need.

Feel free to visit us today at our online store:

LittleDiode.com

Looking forward to providing you with the best possible service.