

# AN6550

## Dual Operational Amplifier

### Overview

The AN6550 is a dual operational amplifier with a phase compensation circuit built-in, allowing low voltage operation.

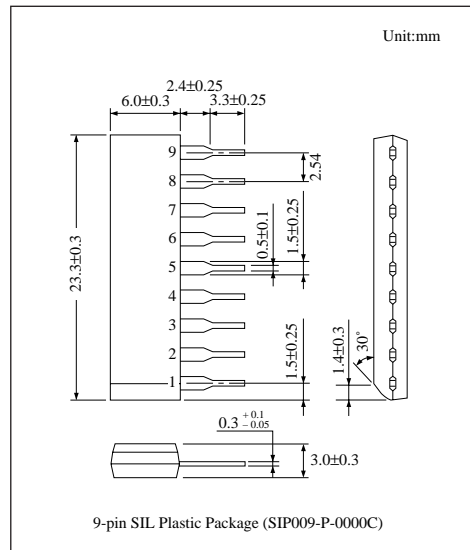
It is suitable for application to various electronic circuits such as active filters and audio preamplifiers.

### Features

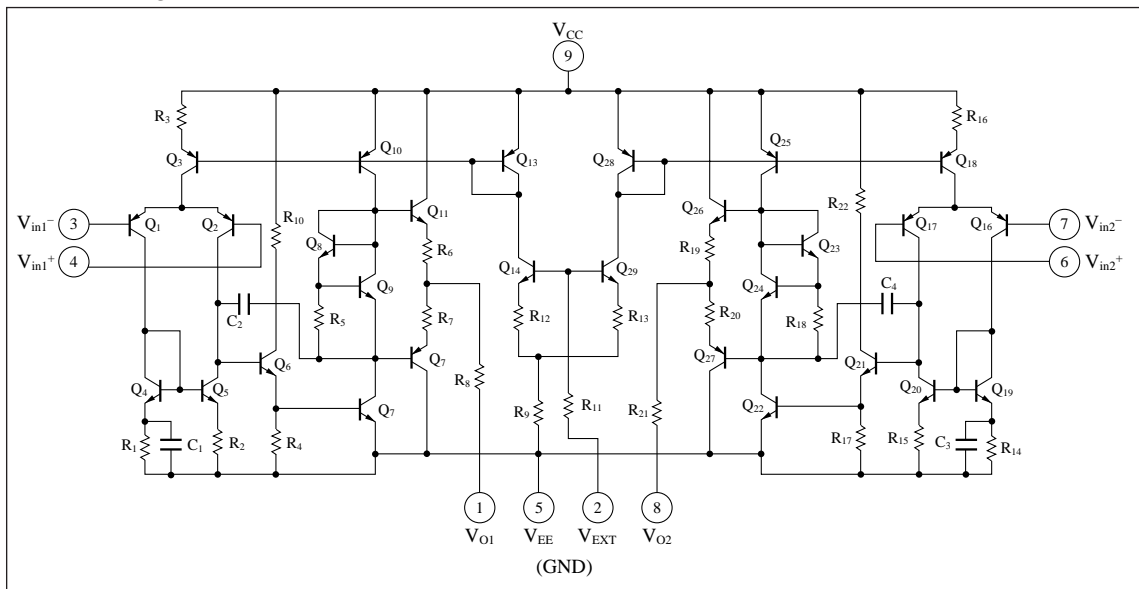
- Phase compensation circuit
- High voltage gain, low noise
- Output short protection circuit
- Low voltage operation( $\pm 2.5V$  to  $\pm 10V$ )

### Pin Descriptions

| Pin No. | Pin name                 |
|---------|--------------------------|
| 1       | Ch.1 output              |
| 2       | External bias            |
| 3       | Ch.1 inverting input     |
| 4       | Ch.1 non inverting input |
| 5       | $V_{EE}$ (GND)           |
| 6       | Ch.2 non inverting input |
| 7       | Ch.2 inverting input     |
| 8       | Ch.2 output              |
| 9       | $V_{CC}$                 |



### Block Diagram



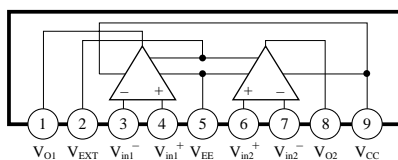
## ■ Absolute Maximum Ratings (Ta=25°C)

| Parameter         |                               | Symbol           | Rating               | Unit |
|-------------------|-------------------------------|------------------|----------------------|------|
| Voltage           | Supply voltage                | $V_{CC}, V_{EE}$ | $\pm 12$             | V    |
|                   | External bias supply voltage  | $V_{EXT}$        | $V_{EE}$ to $V_{CC}$ | V    |
|                   | Differential input voltage    | $V_{ID}$         | $\pm 24$             | V    |
|                   | Common-mode input voltage     | $V_{ICM}$        | $\pm 12$             | V    |
| Power dissipation |                               | $P_D$            | 500                  | mW   |
| Temperature       | Operating ambient temperature | $T_{opr}$        | -20 to +75           | °C   |
|                   | Storage temperature           | $T_{stg}$        | -55 to +150          | °C   |

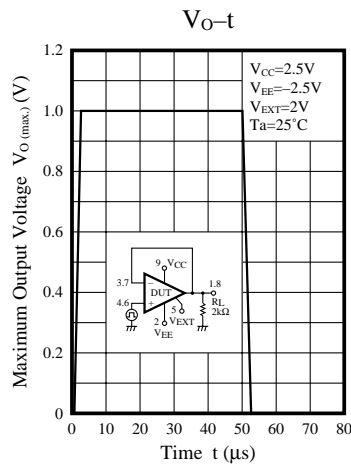
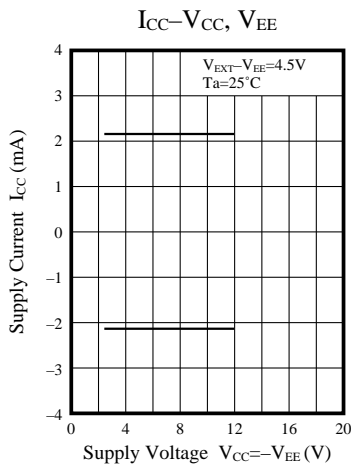
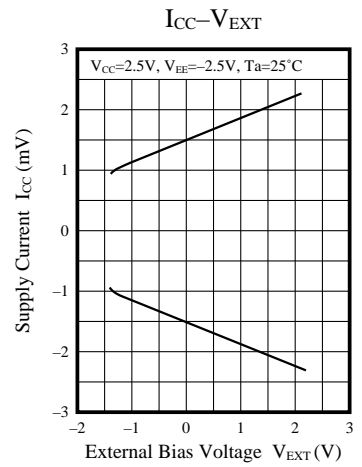
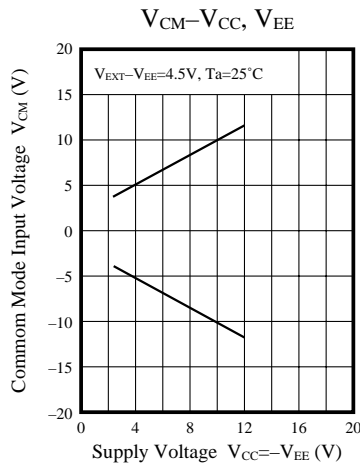
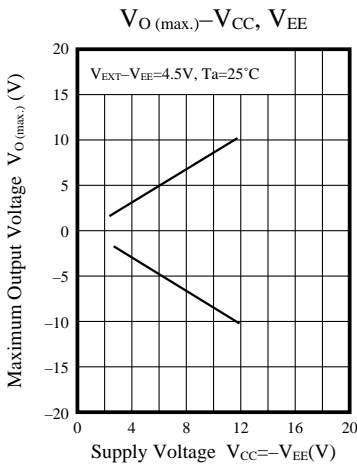
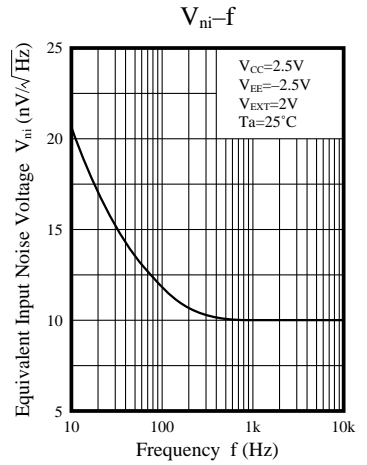
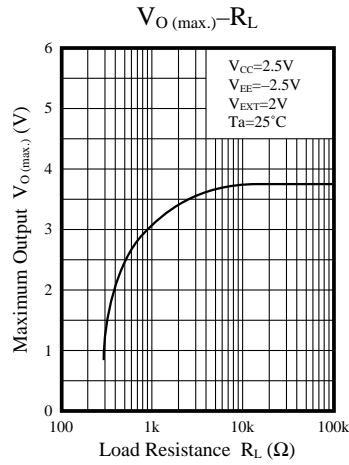
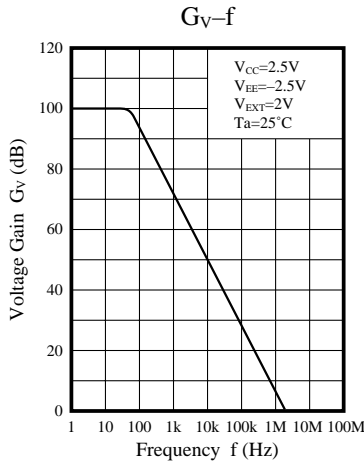
## ■ Electrical Characteristics (V<sub>CC</sub>=2.5V, V<sub>EE</sub>=-2.5V, V<sub>EXT</sub>=2.0V, Ta=25°C)

| Parameter                       | Symbol          | Condition                           | min       | typ       | max | Unit          |
|---------------------------------|-----------------|-------------------------------------|-----------|-----------|-----|---------------|
| Input offset voltage            | $V_{I(offset)}$ | $R_S \leq 10k\Omega$                | —         | 1.5       | 6   | mV            |
| Input offset current            | $I_{IO}$        |                                     | —         | 5         | 200 | nA            |
| Input bias current              | $I_{Bias}$      |                                     | —         | 150       | 500 | nA            |
| Voltage gain                    | $G_V$           | $R_L \geq 2k\Omega$                 | 65        | 100       | —   | dB            |
| Maximum output voltage          | $V_{O(max)}$    | $R_L \geq 10k\Omega$                | $\pm 1.2$ | $\pm 1.7$ | —   | V             |
|                                 |                 | $R_L \geq 2k\Omega$                 | $\pm 1$   | $\pm 1.5$ | —   | V             |
| Common-mode input voltage width | $V_{CM}$        |                                     | $\pm 1$   | $\pm 1.5$ | —   | V             |
| Common-mode rejection ratio     | CMR             |                                     | 70        | 80        | —   | dB            |
| Supply voltage rejection ratio  | SVR             |                                     | —         | 100       | 300 | $\mu V/V$     |
| Power consumption               | $P_C$           | $R_L = \infty$                      | —         | 8         | 15  | mW            |
| Slew rate                       | SR              | $R_L \geq 2k\Omega$                 | —         | 0.8       | —   | V/ $\mu s$    |
| Equivalent input noise voltage  | $V_{ni}$        | $R_S = 1k\Omega, B = 10Hz$ to 30kHz | —         | 2.5       | —   | $\mu V_{rms}$ |

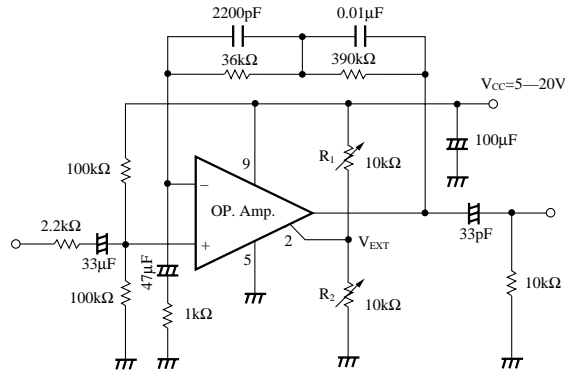
## ■ Pin Assignments



## ■ Characteristics Curve



Application Circuit



RIAA Pre-amplifier (single power supply operation)

Note)  $R_1$  and  $R_2$  are resistances for setting operational amplifier bias.

Set  $R_1$  and  $R_2$  so that  $V_{EXT}=2.0V$  to  $6.0V$ .

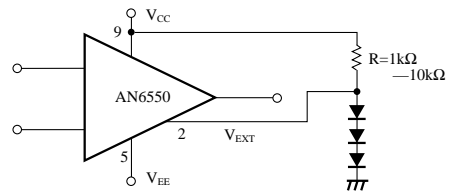
(Recommended Voltage  $V_{EXT}=4.5V$ )

How to Apply External to the AN6550

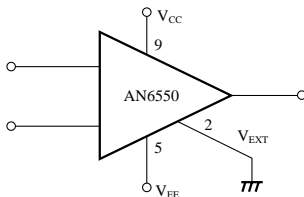
1. The AN6550 is an operational amplifier with a phase compensation circuit built-in, allowing low voltage operation, and its current consumption and bandwidth can be changed by applying external bias to it.
2. As shown below, applies bias voltage to 2  $V_{EXT}$  pin of the AN6550 allows the AN6550 to be handled in the very same way as the AN6551, except for pin connection.

Set  $V_{EXT} \geq V_{EE} + 1V$ .

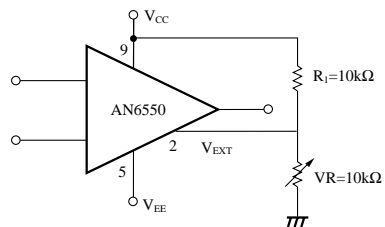
1) By diode



2) By connecting  $V_{EXT}$  pin to GND

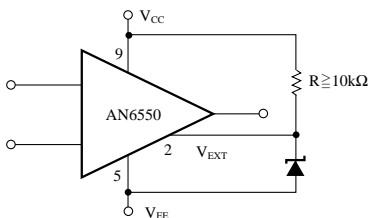


3) By dividing with resistors



4) By Zener diode

( $V_{CC} - V_{EE} \geq 6V$ )





LittleDiode supplies new, hard to find or obsolete electronic components and semiconductors all over the world.

With over two million different components listed you are sure to find the part you need.

Feel free to visit us today at our online store:

[LittleDiode.com](http://LittleDiode.com)

Looking forward to providing you with the best possible service.