

AN7213

FM Front-end Circuit for Radio

■ Description

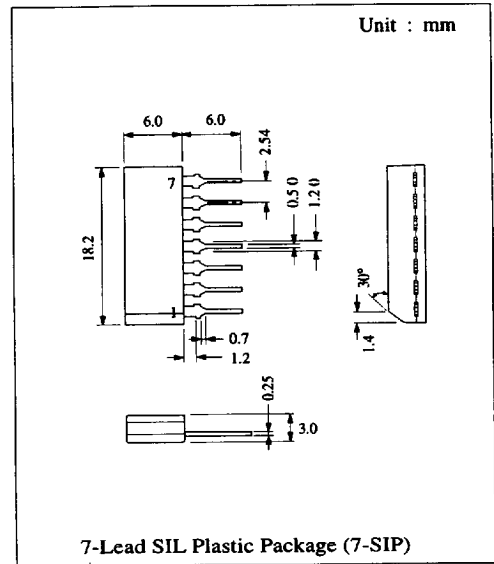
The AN7213 is a monolithic integrated circuit designed for FM front-end of the portable radio.

■ Features

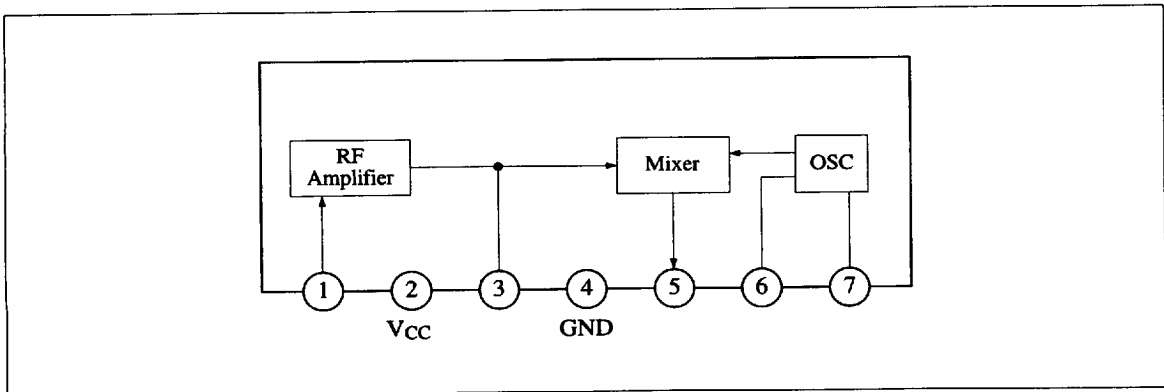
- Built-in RF amplifier, frequency converter, local oscillator
- Wide operating voltage range: 2V~ 7V
- Low current consumption: 2mA ($V_{CC} = 4V$)

■ Pin

Pin No.	Pin Name
1	RF Input
2	V _{CC}
3	RF Output
4	GND
5	Mixer Output
6	Oscillator Collector
7	Oscillator Emitter



■ Block Diagram

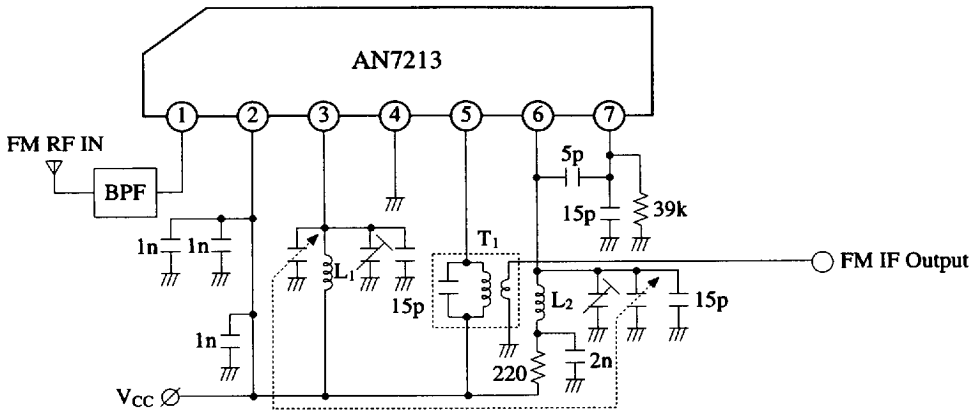


■ 6932852 0013854 T24 ■

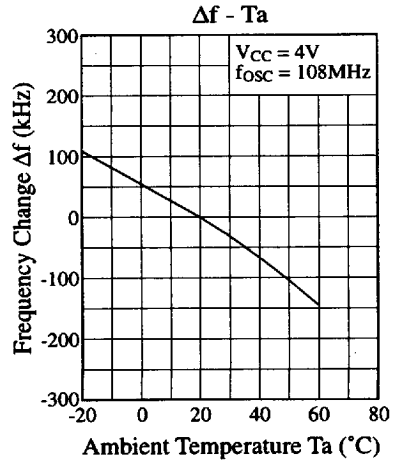
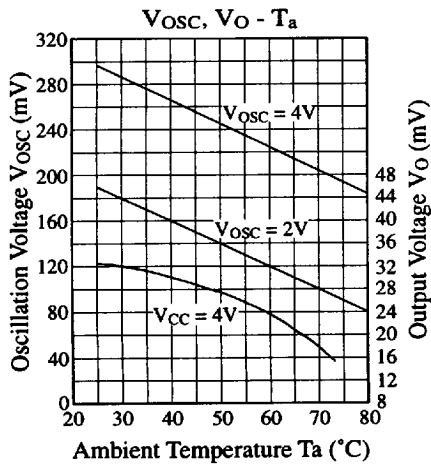
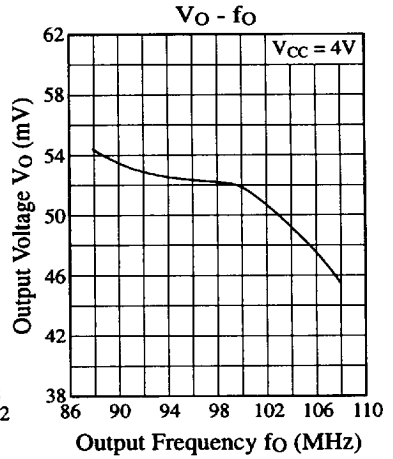
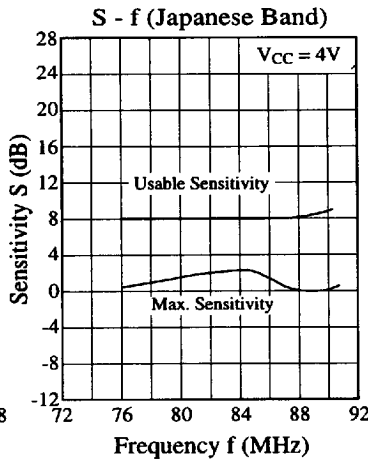
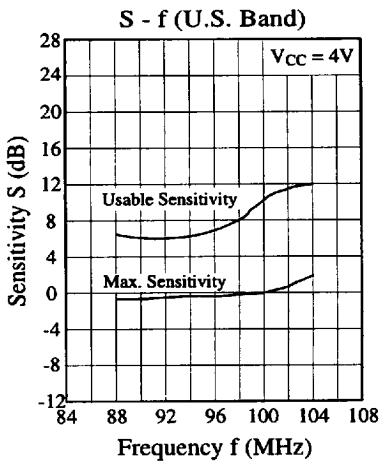
235

Panasonic

■ Application Circuit



■ Characteristics Curve



■ Coil Specifications

Symbol	Use, Freq.	Type No.	Maker	Connection Diagram	Number of Turns	Tuning Cap.	Unloaded Q
T ₁	FM Quad Coil 10.7MHz	EIF-7S752A	Matsushita		①...② 8T ②...③ 5T ④...⑥ 2T	100pF	90
L ₁	RF Coil 76 ~ 108MHz	ELQ-5N53	Matsushita		⑤...⑥ 2.5T	0.0986μH	110 (at 25.2MHz)
L ₂	OSC Coil	ELQ-5N111	Matsushita		⑤...⑥ 1.75T	0.0495μH	150 (at 25.2MHz)

■ Printed Circuit Board Layout (Scale: 1:1)

