



P-Channel JFETs

2N5114JAN/JANTX/JANTXV
2N5115JAN/JANTX/JANTXV
2N5116JAN/JANTX/JANTXV

Table with 5 columns: Part Number, VGS(off) (V), rDS(on) Max (Ω), ID(off) Typ (pA), tON Max (ns). Rows include 2N5114, 2N5115, and 2N5116.

FEATURES

- Low On-Resistance: 2N5114 <75 Ω
• Fast Switching—tON: 16 ns
• High Off-Isolation—ID(off): -10 pA
• Low Capacitance: 6 pF
• Low Insertion Loss

BENEFITS

- Low Error Voltage
• High-Speed Analog Circuit Performance
• Negligible "Off-Error," Excellent Accuracy
• Good Frequency Response
• Eliminates Additional Buffering

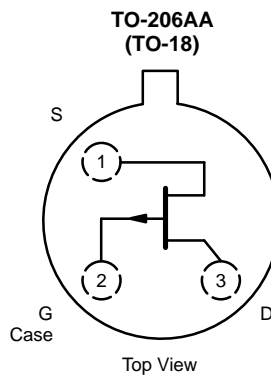
APPLICATIONS

- Analog Switches
• Choppers
• Sample-and-Hold
• Normally "On" Switches
• Current Limiters

DESCRIPTION

The 2N5114JAN/JANTX/JANTXV series consists of p-channel JFET analog switches designed to provide low on-resistance, good off-isolation, and fast switching. These

JFETs are optimized for use in complementary switching applications with the Vishay Siliconix 2N4856A series.



ABSOLUTE MAXIMUM RATINGS

Gate-Drain Voltage . . . . . 30 V
Gate-Source Voltage . . . . . 30 V
Gate Current . . . . . -50 mA
Storage Temperature . . . . . -65 to 200°C
Operating Junction Temperature . . . . . -55 to 200°C

Lead Temperature (1/16" from case for 10 sec.) . . . . . 300°C
Power Dissipationa . . . . . 500 mW

Notes
a. Derate 3 mW/°C above 25°C



SPECIFICATIONS (T <sub>A</sub> = 25 °C UNLESS OTHERWISE NOTED)												
Parameter	Symbol	Test Conditions	Typ <sup>a</sup>	Limits						Unit		
				2N5114		2N5115		2N5116				
				Min	Max	Min	Max	Min	Max			
<b>Static</b>												
Gate-Source Breakdown Voltage	V <sub>(BR)GSS</sub>	I <sub>G</sub> = 1 μA, V <sub>DS</sub> = 0 V	45	30		30		30		V		
Gate-Source Cutoff Voltage	V <sub>GS(off)</sub>	V <sub>DS</sub> = -15 V, I <sub>D</sub> = -1 nA		5	10	3	6	1	4			
Saturation Drain Current <sup>b</sup>	I <sub>DSS</sub>	V <sub>GS</sub> = 0 V		V <sub>DS</sub> = -18 V								
				V <sub>DS</sub> = -15 V			-15	-60	-5	-25	mA	
Gate Reverse Current	I <sub>GSS</sub>	V <sub>GS</sub> = 20 V, V <sub>DS</sub> = 0 V	5		500		500		500	pA		
			0.01		1		1		1		μA	
Gate Operating Current <sup>c</sup>	I <sub>G</sub>	V <sub>DG</sub> = -15 V, I <sub>D</sub> = -1 mA	-5									
Drain Cutoff Current	I <sub>D(off)</sub>	V <sub>DS</sub> = -15 V		V <sub>GS</sub> = 12 V	-10		-500			pA		
				V <sub>GS</sub> = 7 V	-10			-500				
				V <sub>GS</sub> = 5 V	-10					-500		
		V <sub>DS</sub> = -15 V T <sub>A</sub> = 150 °C		V <sub>GS</sub> = 12 V	-0.02		-1					μA
				V <sub>GS</sub> = 7 V	-0.02				-1			
				V <sub>GS</sub> = 5 V	-0.02						-1	
Drain-Source On-Voltage	V <sub>DS(on)</sub>	V <sub>GS</sub> = 0 V		I <sub>D</sub> = -15 mA	-1.0		-1.3					
				I <sub>D</sub> = -7 mA	-0.7				-0.8		V	
				I <sub>D</sub> = -3 mA	-0.5					-0.6		
Drain-Source On-Resistance	r <sub>DS(on)</sub>	V <sub>GS</sub> = 0 V, I <sub>D</sub> = -1 mA			75		100		150	Ω		
Gate-Source Forward Voltage	V <sub>GS(F)</sub>	I <sub>G</sub> = -1 mA, V <sub>DS</sub> = 0 V	-0.7		-1		-1		-1	V		
<b>Dynamic</b>												
Drain-Source On-Resistance	r <sub>ds(on)</sub>	V <sub>GS</sub> = 0 V, I <sub>D</sub> = 0 mA, f = 1 kHz			75		100		175	Ω		
Common-Source Input Capacitance	C <sub>iss</sub>	V <sub>DS</sub> = -15 V, V <sub>GS</sub> = 0 V f = 1 MHz	20		25		25		27	pF		
Common-Source Reverse Transfer Capacitance	C <sub>rss</sub>	V <sub>DS</sub> = 0 V f = 1 MHz		V <sub>GS</sub> = 12 V	5		7					
				V <sub>GS</sub> = 7 V	6			7				
				V <sub>GS</sub> = 5 V	6					7		
<b>Switching</b>												
Turn-On Time	t <sub>d(on)</sub>	See Switching Circuit			6		10		25	ns		
	t <sub>r</sub>				10		20		35			
Turn-Off Time	t <sub>d(off)</sub>				6		8		20			
	t <sub>f</sub>				15		30		60			

**Notes**

- a. Typical values are for DESIGN AID ONLY, not guaranteed nor subject to production testing.
- b. Pulse test: PW ≤ 300 μs duty cycle ≤ 3%.
- c. This parameter not registered with JEDEC.

PSCIA



SWITCHING TIME TEST CIRCUIT			
	2N5114	2N5115	2N5116
$V_{DD}$	-10 V	-6 V	-6 V
$V_{GG}$	20 V	12 V	8 V
$R_L^*$	430 $\Omega$	910 $\Omega$	2000 $\Omega$
$R_G^*$	100 $\Omega$	220 $\Omega$	390 $\Omega$
$I_{D(on)}$	-15 mA	-7 mA	-3 mA
$V_{GS(H)}$	0 V	0 V	0 V
$V_{GS(L)}$	-11 V	-7 V	-5 V

\*Non-inductive

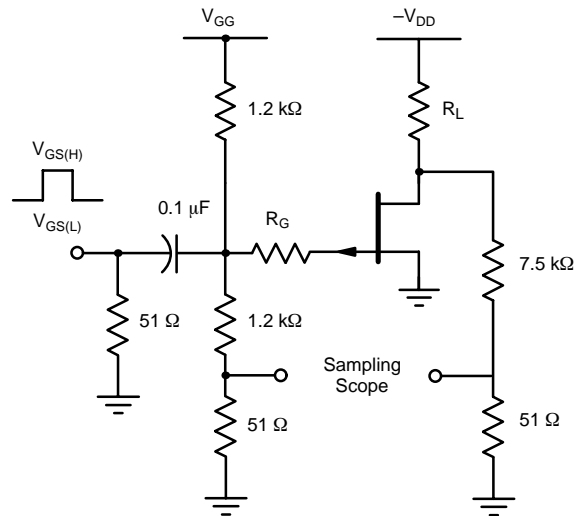
**INPUT PULSE**

Rise Time < 1 ns  
 Fall Time < 1 ns  
 Pulse Width 100 ns  
 PRF 1 MHz

**SAMPLING SCOPE**

Rise Time 0.4 ns  
 Input Resistance 10 M $\Omega$   
 Input Capacitance 1.5 pF

See Typical Characteristics curves for changes.





LittleDiode supplies new, hard to find or obsolete electronic components and semiconductors all over the world.

With over two million different components listed you are sure to find the part you need.

Feel free to visit us today at our online store:

[LittleDiode.com](http://LittleDiode.com)

Looking forward to providing you with the best possible service.