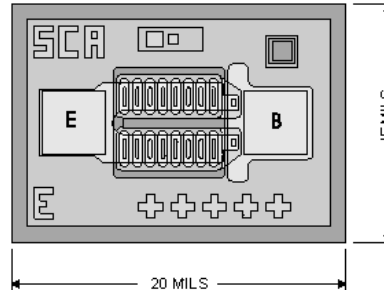


Chip Type 2C5109
Geometry 1007
Polarity NPN

Generic Packaged Parts:
2N5109



[Request Quotation](#)

Chip type **2C5109** by Semicoa Semiconductors provides performance similar to these devices.

Part Numbers:

2N5109, 2N5109UB, SD5109, SD5109F, SQ5109, SQ5109F

Product Summary:

APPLICATIONS:

Designed for broadband applications. Usable as high frequency current mode switch to 200 mA.

Features: Special Characteristics

$f_t = 1200 \text{ MHz (typ) at } 50 \text{ mA/15V}$

Mechanical Specifications		
Metallization	Top	Al - 15 kÅ min.
	Backside	Au - 6.5 kÅ nom.
Bonding Pad Size	Emitter	3.4 mils x 3.0 mils
	Base	3.4 mils x 3.0 mils
Die Thickness	8 mils nominal	
Chip Area	15 mils x 20 mils	
Top Surface	Silox Passivated	

Electrical Characteristics				
$T_A = 25^\circ\text{C}$				
Parameter	Test conditions	Min	Max	Unit
BV_{CER}	$I_C = 5.0 \text{ mA}, R_{BE} = 10 \text{ Ohms}$	40	---	V dc
BV_{CEO}	$I_C = 5.0 \text{ mA}$	20	---	V dc
I_{CEO}	$V_{CE} = 15 \text{ V dc}$	---	20	μA
I_{EBO}	$V_{BE} = 3.0 \text{ V dc}$	---	100	μA
h_{FE1}	$I_C = 360 \text{ mA}, V_{CE} = 3.0 \text{ V dc}$	5.0	---	---
h_{FE2}	$I_C = 50 \text{ mA}, V_{CE} = 15 \text{ V dc}$	40	120	---

Due to limitations of probe testing, only dc parameters are tested. This must be done with pulse width less than 300 μs , duty cycle less than 2%.

This datasheet has been downloaded from:

www.DatasheetCatalog.com

Datasheets for electronic components.



LittleDiode supplies new, hard to find or obsolete electronic components and semiconductors all over the world.

With over two million different components listed you are sure to find the part you need.

Feel free to visit us today at our online store:

LittleDiode.com

Looking forward to providing you with the best possible service.