

Rectifier diode

1SR153-400

●Applications

High speed rectification

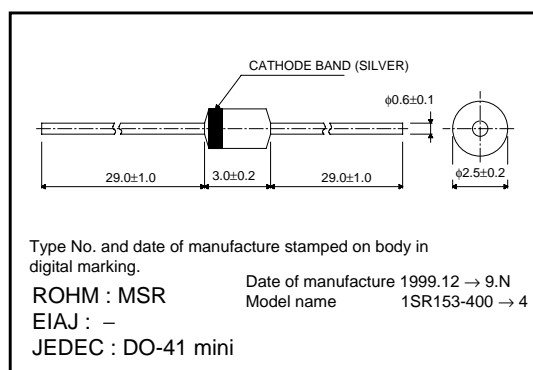
●Features

- 1) Cylindrical mold. (MSR)
- 2) $V_{RM}=400V$ guaranteed while maintaining high speed.
- 3) High reliability.

●Construction

Silicon diffused junction

●External dimensions (Units : mm)



●Absolute maximum ratings (Ta = 25°C)

Parameter	Symbol	Limits	Unit
Absolute peak reverse voltage	V_{RSM}	500	V
Peak reverse voltage	V_{RM}	400	V
Mean rectifying current	I_o	1.0	A
Peak forward surge current *	I_{FSM}	30	A
Junction temperature	T_j	150	°C
Storage temperature	T_{stg}	-40~+150	°C

* 60Hz for 1 \varnothing

●Electrical characteristics (Ta = 25°C)

Parameter	Symbol	Min.	Typ.	Max.	Unit	Conditions
Forward voltage	V_F	-	-	1.3	V	$I_F=0.8A$
Reverse current	I_R	-	-	10	μA	$V_R=400V$
Reverse recovery time	t_{rr}	-	-	0.4	μs	$I_F=I_R=10mA, I_{rr}=1mA$

Diodes

●Electrical characteristic curves (Ta = 25°C)

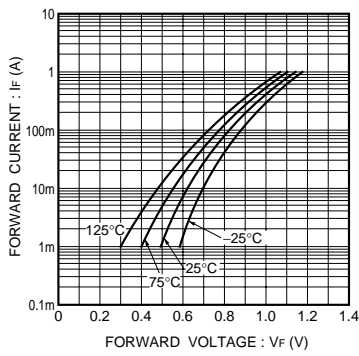


Fig.1 Forward characteristics

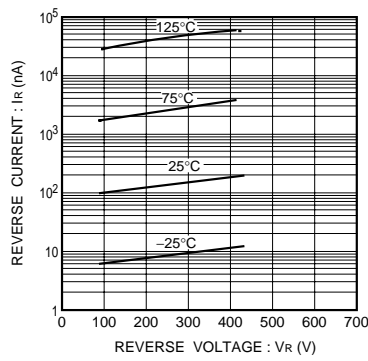


Fig.2 Reverse characteristics

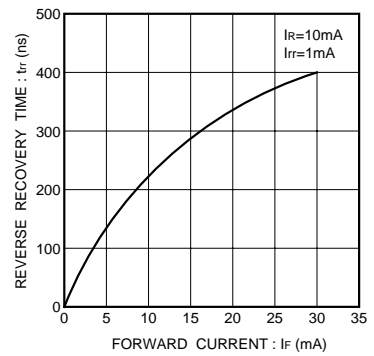


Fig.3 Reverse recovery time characteristics

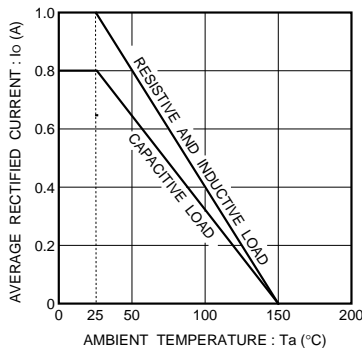


Fig.4 Derating curve

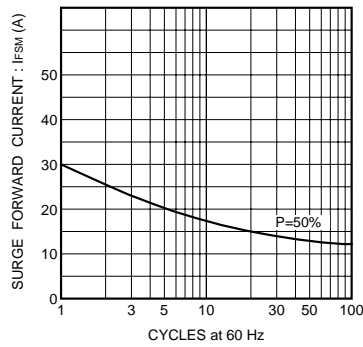


Fig.5 Surge current characteristics

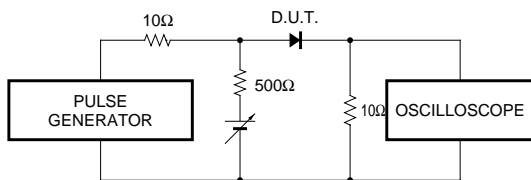


Fig.6 Reverse recovery time (tr) measurement circuit



LittleDiode supplies new, hard to find or obsolete electronic components and semiconductors all over the world.

With over two million different components listed you are sure to find the part you need.

Feel free to visit us today at our online store:

LittleDiode.com

Looking forward to providing you with the best possible service.