

1N6815
(MSASC25H45K)
1N6815R
(MSASC25H45KR)

45 Volts
25 Amps

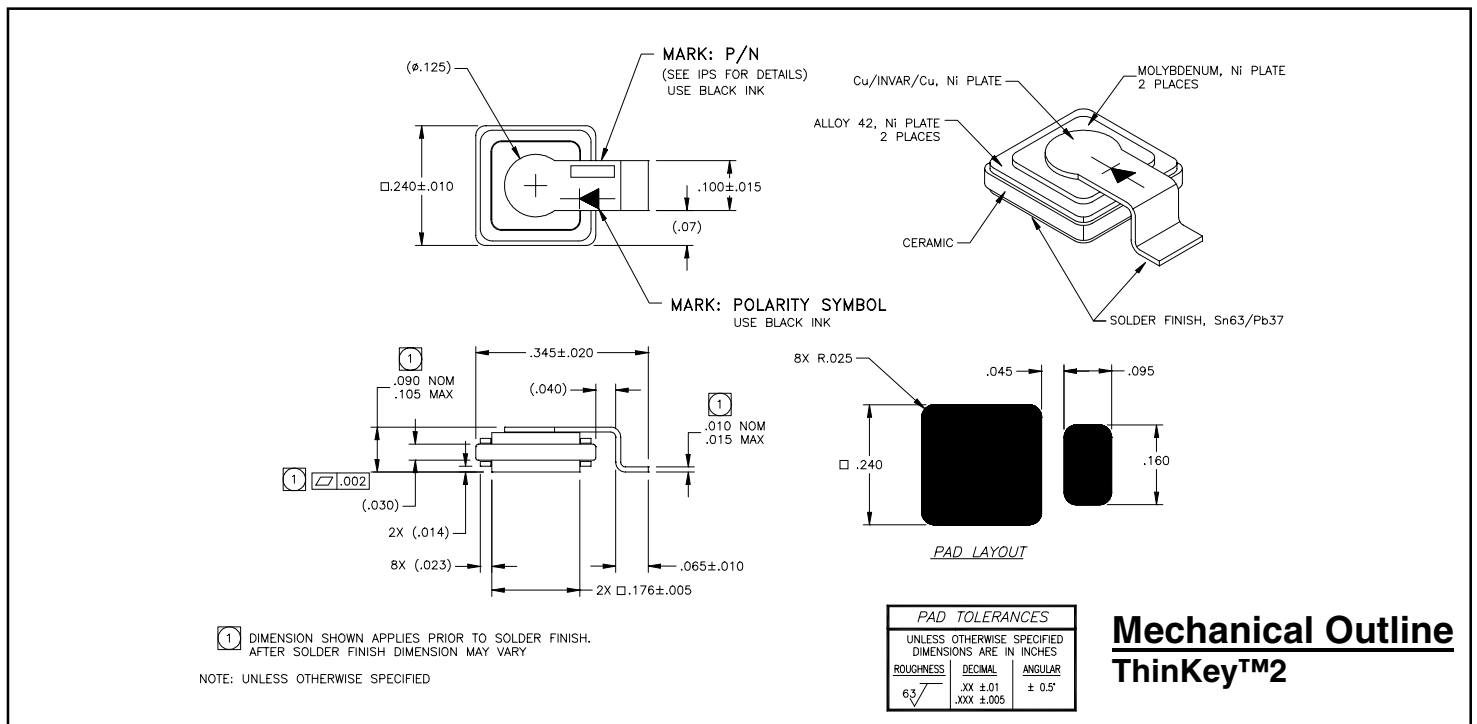
LOW VOLTAGE
DROP SCHOTTKY
DIODE

Features

- Tungsten/Platinum schottky barrier for very low VF
- Oxide passivated structure for very low leakage currents
- Guard ring protection for increased reverse energy capability
- Epitaxial structure minimizes forward voltage drop
- Hermetically sealed, low profile ceramic surface mount power package
- Low package inductance
- Very low thermal resistance
- Available as standard polarity (strap is anode: 1N6815) and reverse polarity (strap is cathode: 1N6815R)
- TXV-level (MSASC25H45KV) or S-level (MSASC25H45KS) screening i.a.w. Microsemi Internal Procedure PS11.50 available

Maximum Ratings @ 25°C (unless otherwise specified)

DESCRIPTION	SYMBOL	MAX.	UNIT
Peak Repetitive Reverse Voltage	V_{RRM}	45	Volts
Working Peak Reverse Voltage	V_{RWM}	45	Volts
DC Blocking Voltage	V_R	45	Volts
Average Rectified Forward Current, $T_c \leq 145^\circ\text{C}$	$I_{F(ave)}$	25	Amps
derating, forward current, $T_c \geq 145^\circ\text{C}$	dl_f/dT	(3.3)	Amps/ $^\circ\text{C}$
Nonrepetitive Peak Surge Current, $t_p = 8.3$ ms, half-sinewave	I_{FSM}	125	Amps
Peak Repetitive Reverse Surge Current, $t_p = 1\mu\text{s}$, $f = 1$ kHz	I_{RRM}	2	Amp
Junction Temperature Range	T_j	-55 to +150	$^\circ\text{C}$
Storage Temperature Range	T_{stg}	-55 to +150	$^\circ\text{C}$
Thermal Resistance, Junction to Case:	θ_{JC}	1.25 1.35	$^\circ\text{C/W}$
		1N6815 1N6815R	



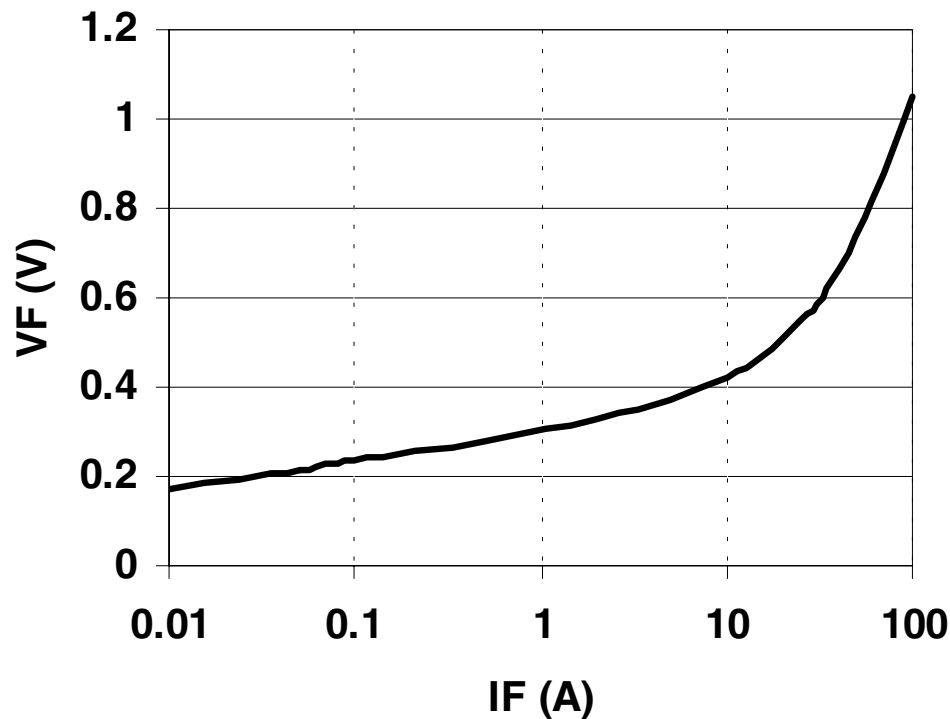
Mechanical Outline
ThinKey™2

1N6815 (MSASC25H45K) 1N6815R (MSASC25H45KR)

Electrical Parameters

DESCRIPTION	SYMBOL	CONDITIONS	MIN	TYP.	MAX	UNIT
Reverse (Leakage) Current	IR	VR= 45 Vdc, Tc= 25°C		300	1000	μA
	IR	VR= 45 Vdc, Tc= 125°C		100	150	mA
Forward Voltage pulse test, pw= 300 μs d/c ≤ 2%	VF	IF= 5A, Tc= 25°C		375	475	mV
	VF	IF= 10A, Tc= 25°C		430	520	mV
	VF	IF= 20A, Tc= 25°C		510	610	mV
	VF	IF= 50A, Tc= 25°C		740		mV
	VF	IF= 10A, Tc= -55°C		480	580	mV
	VF	IF= 10A, Tc= 125°C		360		mV
	Junction Capacitance	Cj	VR= 10 Vdc		525	600
Cj		VR= 5 Vdc		725		pF
Breakdown Voltage	BVR	IR= 1 mA, Tc= 25°C		55		V
		IR= 1 mA, Tc= -55°C	45	50		V

VF typical vs. IF





LittleDiode supplies new, hard to find or obsolete electronic components and semiconductors all over the world.

With over two million different components listed you are sure to find the part you need.

Feel free to visit us today at our online store:

LittleDiode.com

Looking forward to providing you with the best possible service.