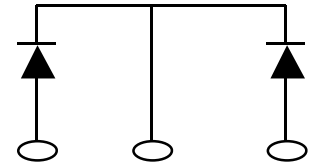


## POWER PRODUCT SPECIFICATION

### 30 A 400V COMMON CATHODE DUAL ULTRAFAST RECTIFIER

#### FEATURES:

- QUALIFIED PARTS LISTING MIL-PRF-19500/617
- LOW FORWARD VOLTAGE DROP
- ISOLATED HERMETICALLY SEALED PACKAGE
- RUGGED CERAMIC FEEDTHROUGH CONSTRUCTION



#### Absolute Maximum Ratings:

Symbol	Parameter	Limit	Unit
VRWM *1	Peak Repetitive Reverse Voltage	400	Vdc
VRRM *1	Working Peak Reverse Voltage	400	Vdc
VR *1	DC Blocking Voltage	400	Vdc
IO *1	Average Forward Current, TC= 100 °C	15	Adc
IFSM *1	Peak Surge Current	150	A(pk)
ROJC *1	Thermal Resistance, Junction to Case	2.0	°C/W
ROJA *1	Thermal Resistance, Junction to Ambient	40	°C/W
Tj	Operating Junction Temperature Range	-65 to +200	°C
Tstg	Storage Temperature Range	-65 to +200	°C

NOTE 1: EACH INDIVIDUAL DIODE

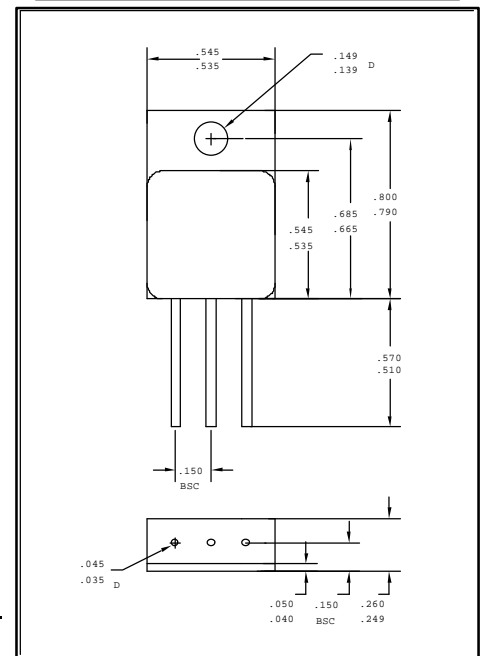
#### Electrical Characteristics (Per Diode) @ 25°C unless otherwise specified

Symbol	Parameter	Conditions	Min	Max	Unit
Vf1	Forward Voltage	If = 10A(pk)		1.35	Vdc
Vf2	Forward Voltage	If = 20A(pk)		1.55	Vdc
IR1	Reverse Current	VR = 320Vdc		50.0	uA
IR2	Reverse Current	VR = 320Vdc TC=100° C		5.0	mA
Vf3	Forward Voltage	If = 10A(pk), TA= -65°C		1.45	Vdc
t <sub>rr</sub>	Reverse Recovery Time	Cond. B, If=.5Adc, IR=1A, IRR=.25A		35	ns
C <sub>j</sub>	Junction Capacitance	VR= 10Vdc, f=1MHz		150	pF

Serotech reserves the right to make changes to any product design, specification or other information at any time without prior notice.

MSC1001 2/9/99

#### PHYSICAL DIMENSIONS



Package Designation: TO-254

PIN # 1: ANODE

PIN # 2: CATHODE

PIN # 3: ANODE

This datasheet has been downloaded from:

[www.DatasheetCatalog.com](http://www.DatasheetCatalog.com)

Datasheets for electronic components.



LittleDiode supplies new, hard to find or obsolete electronic components and semiconductors all over the world.

With over two million different components listed you are sure to find the part you need.

Feel free to visit us today at our online store:

[LittleDiode.com](http://LittleDiode.com)

Looking forward to providing you with the best possible service.