

A Microsemi Company
580 Pleasant St.
Watertown, MA 02172

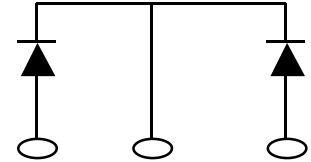
Phone: 617-924-9280
Fax: 617-924-1235

POWER PRODUCT SPECIFICATION

30 A 300V COMMON CATHODE DUAL ULTRAFAST RECTIFIER

FEATURES:

- QUALIFIED PARTS LISTING: MIL-PRF-19500/617
- LOW FORWARD VOLTAGE DROP
- ISOLATED HERMETICALLY SEALED PACKAGE
- RUGGED CERAMIC FEEDTHROUGH CONSTRUCTION

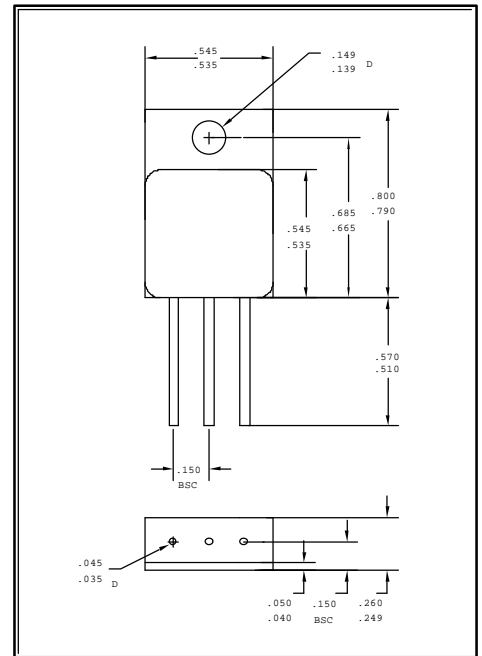


Absolute Maximum Ratings:

Symbol	Parameter	Limit	Unit
VRWM *1	Peak Repetitive Reverse Voltage	300	Vdc
VRRM *1	Working Peak Reverse Voltage	300	Vdc
VR *1	DC Blocking Voltage	300	Vdc
IO *1	Average Forward Current, TC= 100 °C	15	Adc
IFSM *1	Peak Surge Current	150	A(pk)
ROJC *1	Thermal Resistance, Junction to Case	2.0	°C/W
ROJA *1	Thermal Resistance, Junction to Ambient	40	°C/W
TJ	Operating Junction Temperature Range	-65 to +200	°C
Tstg	Storage Temperature Range	-65 to +200	°C

NOTE 1: EACH INDIVIDUAL DIODE

PHYSICAL DIMENSIONS



Electrical Characteristics (Per Diode) @ 25°C unless otherwise specified

Package Designation: TO-254
PIN # 1: ANODE
PIN # 2: CATHODE
PIN # 3: ANODE

Symbol	Parameter	Conditions	Min	Max	Unit
Vf1	Forward Voltage	If = 10A(pk)		1.35	Vdc
Vf2	Forward Voltage	If = 20A(pk)		1.55	Vdc
IR1	Reverse Current	VR = 240Vdc		50.0	uA
IR2	Reverse Current	VR = 240Vdc TC=100° C		5.0	mA
Vf3	Forward Voltage	If = 10A(pk), TA= -65°C		1.45	Vdc
t _{rr}	Reverse Recovery Time	Cond. B, If=.5Adc, IR=1A, IRR=.25A		35	ns
C _j	Junction Capacitance	VR= 10Vdc, f=1MHz		150	pF

Serotech reserves the right to make changes to any product design, specification or other information at any time without prior notice.

This datasheet has been downloaded from:

www.DatasheetCatalog.com

Datasheets for electronic components.



LittleDiode supplies new, hard to find or obsolete electronic components and semiconductors all over the world.

With over two million different components listed you are sure to find the part you need.

Feel free to visit us today at our online store:

LittleDiode.com

Looking forward to providing you with the best possible service.