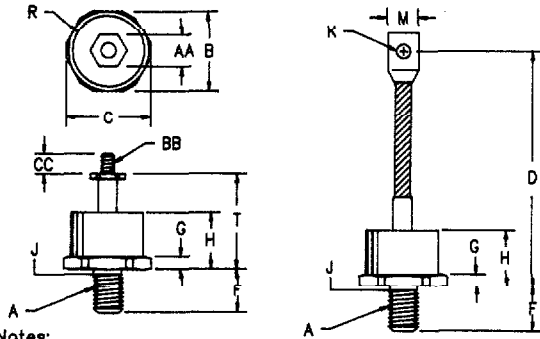


Silicon Power Rectifier S/R42 Series



- Notes:
 1. 3/8-24 UNF-3A
 2. Full threads within 2 1/2 threads
 3. Standard polarity: Stud is Cathode
 Reverse polarity: Stud is Anode

Dim.	Inches		Millimeter		Notes
	Minimum	Maximum	Minimum	Maximum	
A	---	---	---	---	1
B	1.050	1.060	26.67	26.92	
C	---	1.166	---	29.61	
D	4.30	4.70	109.22	119.38	
F	.610	.640	15.49	16.25	
G	.213	.233	5.41	5.66	
H	---	.745	---	18.92	
J	.344	.373	8.74	9.47	2
K	.276	.286	7.01	7.26	
M	.465	.515	11.81	13.08	
R	---	.850	---	21.59	Die
T	1.426	---	36.22	---	
AA	.427	.437	10.84	11.09	
BB	---	---	---	---	3
CC	.407	---	10.33	---	

D0205AA (D08)

Microsemi Catalog Number	JEDEC Numbers	Peak Reverse Voltage
*S4210	1N412B, 1N1397, 1N3288, 1N4878	100V
*S4220	1N413B, 1N1399, 1N3289, 1N3972	200V
*S4230	1N1400, 1N2431, 1N2441, 1N3290	300V
*S4240	1N1401, 1N2433, 1N2443, 1N3921, 1N3973	400V
*S4250	1N1402, 1N2434, 1N2444, 1N3292	500V
*S4260	1N1403, 1N2435, 1N2445, 1N3293, 1N3974	600V
*S4280	1N3294, 1N3975	800V
*S42100	1N3295	1000V
*S42120	1N3296	1200V
*S42140		1400V
*S42160		1600V

*Change S to R in part number for Reverse Polarity
 Add the suffix TS to the end of the part number if a Top Stud is desired

- Soft recovery
- Glass Passivated Die
- 2000 Amps Surge Rating
- Glass to metal construction
- VRRM to 1600V
- Excellent reliability

Electrical Characteristics

Average forward current	$I_F(AV)$ 125 Amps	$T_C = 146^\circ C$, Half Sine Wave, $R_{\theta JC} = 0.40^\circ C/W$
Maximum surge current	I_{FSM} 2000 Amps	8.3ms, half sine, $T_J = 200^\circ C$
Max $I^2 t$ for fusing	$I^2 t$ 16800 $A^2 s$	
Max peak forward voltage	V_{FM} 1.2 Volts	$I_{FM} = 200A; T_J = 25^\circ C$
Max peak reverse current	I_{RM} 200 μA	$V_{RRM}, T_J = 25^\circ C$
Max peak reverse current	I_{RM} 5.0 mA	$V_{RRM}, T_J = 150^\circ C$
Max Recommended Operating Frequency	7.5kHz	

*Pulse test: Pulse width 300 μsec . Duty cycle 2%

Thermal and Mechanical Characteristics

Storage temperature range	ISTG	$-65^\circ C$ to $200^\circ C$
Operating junction temp range	T_J	$-65^\circ C$ to $200^\circ C$
Maximum thermal resistance	$R_{\theta JC}$	0.40 $^\circ C/W$ Junction to Case
Typical thermal resistance	$R_{\theta JC}$	0.35 $^\circ C/W$ Junction to Case
Mounting torque		100 Inch pounds maximum
Weight		2.75 ounces (78 grams) typical

Microsemi Corp.
Colorado

S/R42

Figure 1
Typical Forward Characteristics

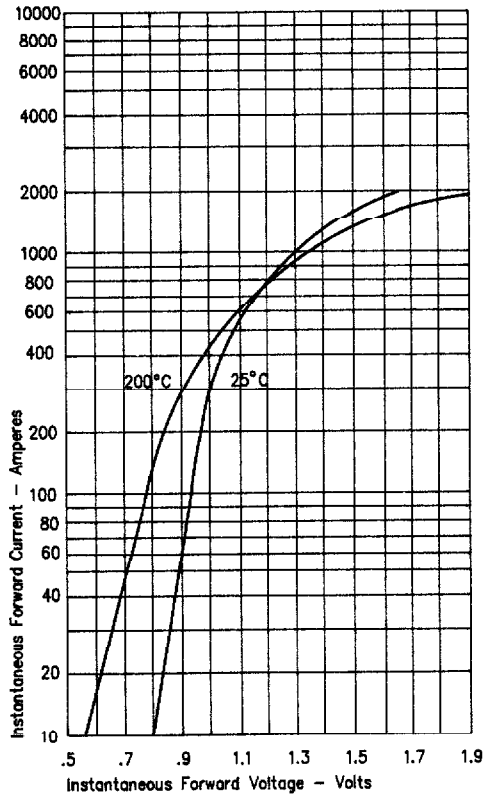


Figure 3
Forward Current Derating

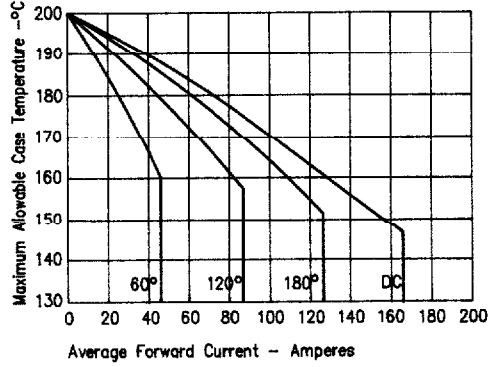


Figure 4
Maximum Forward Power Dissipation

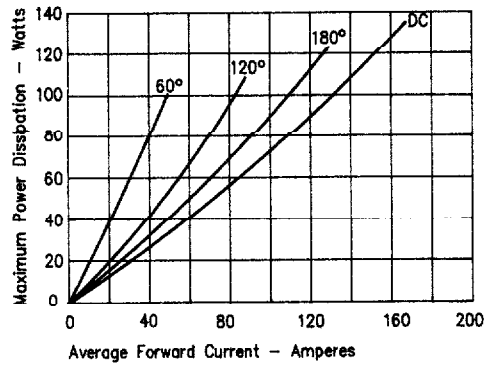


Figure 2
Typical Reverse Characteristics

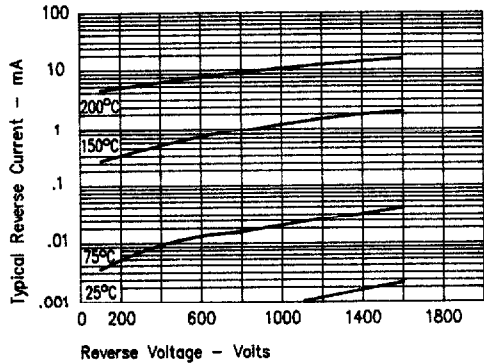
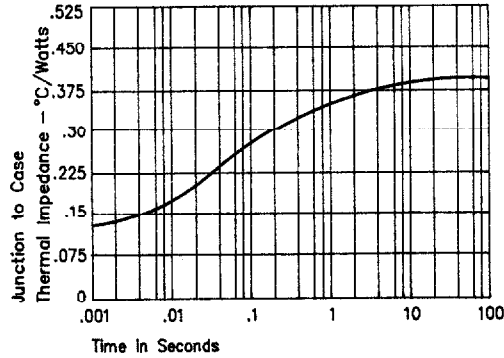
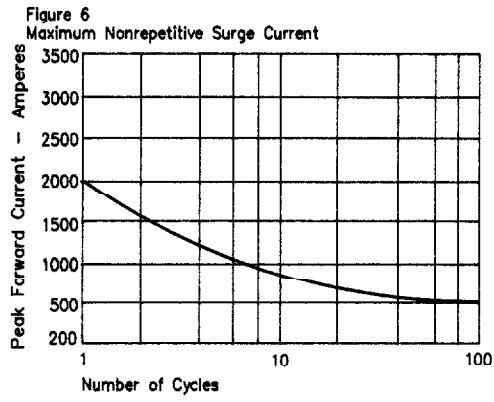


Figure 5
Transient Thermal Impedance



S/R42

|



This datasheet has been downloaded from:

www.DatasheetCatalog.com

Datasheets for electronic components.



LittleDiode supplies new, hard to find or obsolete electronic components and semiconductors all over the world.

With over two million different components listed you are sure to find the part you need.

Feel free to visit us today at our online store:

LittleDiode.com

Looking forward to providing you with the best possible service.