

BYV95A - BYV96E

AVALANCHE FAST RECOVERY RECTIFIER DIODES

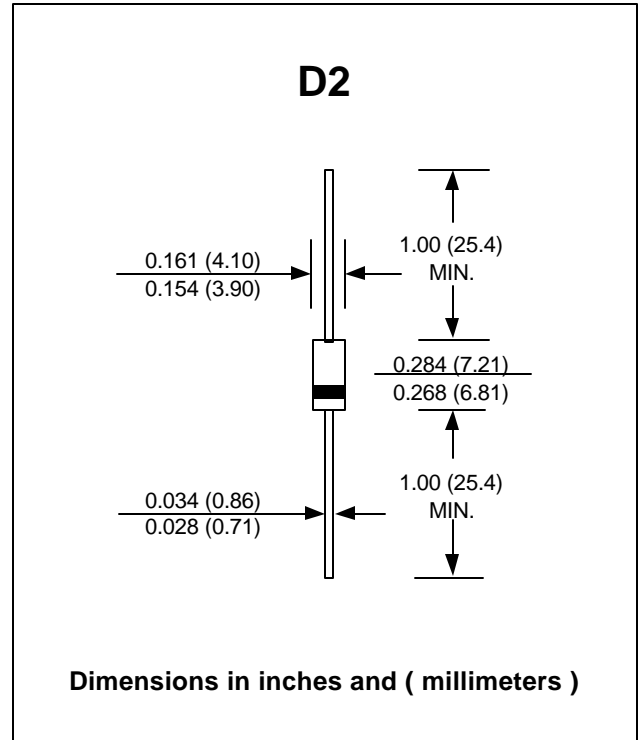
PRV : 200 - 1000 Volts
Io : 1.5 Amperes

FEATURES :

- * High current capability
- * High surge current capability
- * High reliability
- * Low reverse current
- * Low forward voltage drop
- * Fast switching for high efficiency

MECHANICAL DATA :

- * Case : D2 Molded plastic
- * Epoxy : UL94V-O rate flame retardant
- * Lead : Axial lead solderable per MIL-STD-202, Method 208 guaranteed
- * Polarity : Color band denotes cathode end
- * Mounting position : Any
- * Weight : 0.465 gram



MAXIMUM RATINGS AND ELECTRICAL CHARACTERISTICS

Rating at 25 °C ambient temperature unless otherwise specified.
 Single phase, half wave, 50 Hz, resistive or inductive load.
 For capacitive load, derate current by 20%.

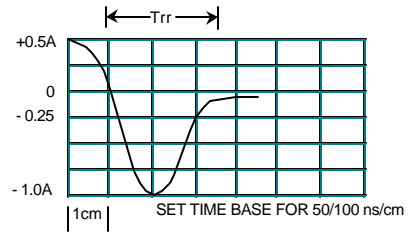
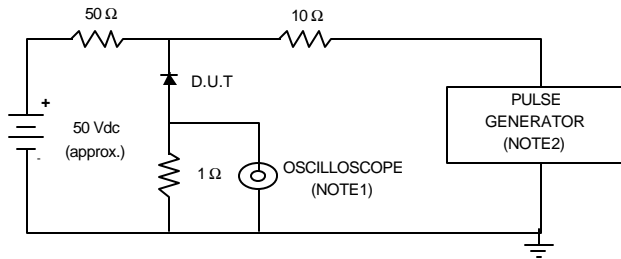
RATING	SYMBOL	BYV95A	BYV95B	BYV95C	BYV96D	BYV96E	UNITS
Maximum Recurrent Peak Reverse Voltage	V _{RRM}	200	400	600	800	1000	Volts
Maximum RMS voltage	V _{RMS}	140	280	420	560	700	Volts
Maximum DC Blocking Voltage	V _{DC}	200	400	600	800	1000	Volts
Min. Avalanche Breakdown Voltage @ 100 μA	V _{BR(min.)}	300	500	700	900	1100	Volts
Maximum Average Forward Rectified Current Lead Length 10 mm. ; T _{tp} = 65 °C	I _{F(AV)}	1.5					Amps.
Peak Forward Surge Current single half sine wave superimposed on rated load	I _{FSM}	35					Amps.
Maximum Forward Voltage at I _F = 3.0 Amps.	V _F	1.6					Volts
Maximum DC Reverse Current T _J = 25 °C at Rated DC Blocking Voltage T _J = 165 °C	I _R	5.0					μA
Maximum Reverse Recovery Time (Note 1)	T _{rr}	150			200		ns
Typical Thermal Resistance (Note 2)	R _{θJA}	50					°C/W
Junction Temperature Range	T _J	175					°C
Storage Temperature Range	T _{STG}	- 65 to + 175					°C

Notes :

- (1) Measured with I_F = 0.5A, R = 1.0A, I_{rr} = 0.25A
- (2) Thermal resistance from Junction to Ambient at 0.375" (9.5mm) Lead Lengths. P.C. Board Mounted.

RATING AND CHARACTERISTIC CURVES (BYV95A - BYV96E)

FIG.1 - REVERSE RECOVERY TIME CHARACTERISTIC AND TEST CIRCUIT DIAGRAM



NOTE : 1. Rise Time = 7ns max., Input Impedance = 1 megaohm, 22pF.
 2. Rise Time = 10ns max., Source Impedance = 50 ohms.
 3. All Resistors = Non-inductive Types.

FIG.2 - FORWARD CURRENT DERATING CURVE

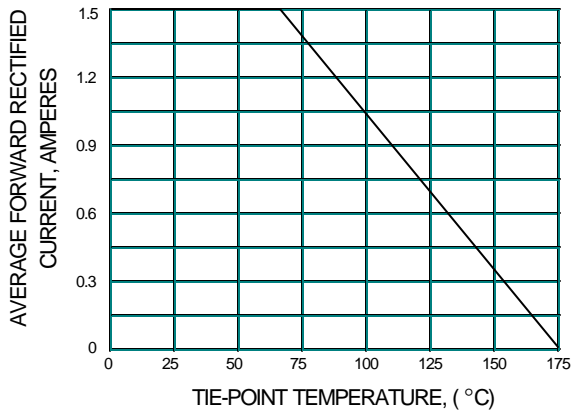


FIG.3 - MAXIMUM NON-REPETITIVE PEAK FORWARD SURGE CURRENT

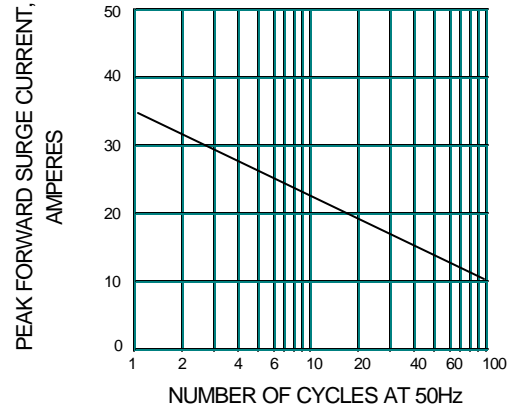


FIG.4 - TYPICAL FORWARD CHARACTERISTICS

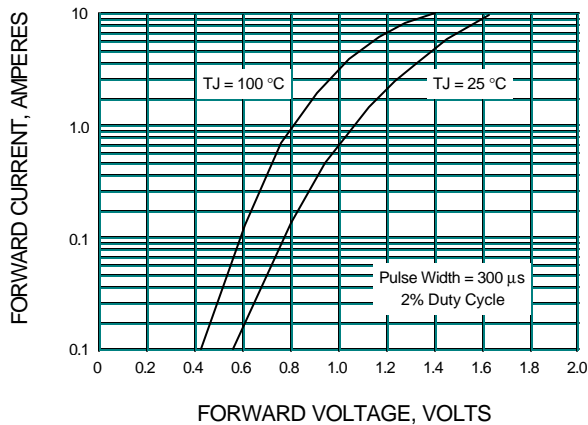
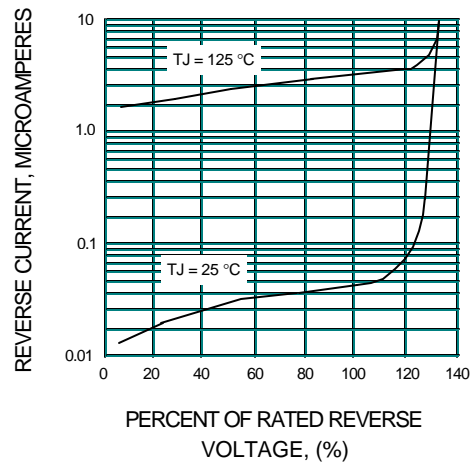


FIG.5 - TYPICAL REVERSE CHARACTERISTICS





LittleDiode supplies new, hard to find or obsolete electronic components and semiconductors all over the world.

With over two million different components listed you are sure to find the part you need.

Feel free to visit us today at our online store:

LittleDiode.com

Looking forward to providing you with the best possible service.