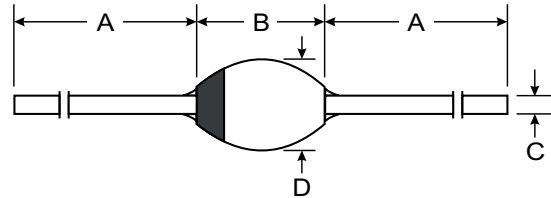


Features

- Hermetically Sealed Glass Body Construction
- Controlled Avalanche Characteristics
- Super-Fast Switching for High Efficiency
- High Current Capability and Low Forward Voltage Drop
- Surge Overload Rating to 50A Peak
- Low Reverse Leakage Current



Mechanical Data

- Case: SOD-57, Glass
- Terminals: Plated Leads Solderable per MIL-STD-202, Method 208
- Polarity: Cathode Band
- Weight: 0.50 grams (approx.)
- Mounting Position: Any
- Marking: Type Number

SOD-57		
Dim	Min	Max
A	26.0	—
B	—	4.2
C	—	0.82
D	—	3.6
All Dimensions in mm		

Maximum Ratings and Electrical Characteristics @ $T_j = 25^\circ\text{C}$ unless otherwise specified

Characteristic	Symbol	BYV27/50	BYV27/100	BYV27/150	BYV27/200	Unit
Peak Repetitive Reverse Voltage Working Peak Reverse Voltage DC Blocking Voltage	V_{RRM} V_{RWM} V_R	50	100	150	200	V
RMS Reverse Voltage	$V_{R(RMS)}$	35	70	100	140	V
Non-Repetitive Peak Reverse Voltage	V_{RSM}	55	110	165	220	V
Average Rectified Output Current (Note 1)	I_O	2.0				A
Non-Repetitive Peak Forward Surge Current 8.3ms single half sine-wave superimposed on rated load (JEDEC Method)	I_{FSM}	50				A
Repetitive Forward Surge Current	I_{FRM}	15				A
Forward Voltage @ $I_F = 5.0\text{A}$	V_{FM}	1.1				V
Peak Reverse Current @ $T_j = 25^\circ\text{C}$ at Rated DC Blocking Voltage @ $T_j = 165^\circ\text{C}$	I_{RM}	1.0 150				μA
Non-Repetitive Reverse Avalanche Energy $I_R = 0.6\text{A}$ Inductive Load @ $T_j = 175^\circ\text{C}$	E_{RSM}	20				mJ
Reverse Recovery Time (Note 2)	t_{rr}	25				ns
Typical Thermal Resistance Junction to Ambient (Note 1)	$R_{\theta JA}$	45				K/W
Operating and Storage Temperature Range	T_j, T_{STG}	-65 to +175				$^\circ\text{C}$

- Notes: 1. Leads maintained at ambient temperature at a distance of 10mm from the case.
2. Measured with $I_F = 0.5\text{A}$, $I_R = 1.0\text{A}$, $I_{rr} = 0.25\text{A}$. See Figure 4.

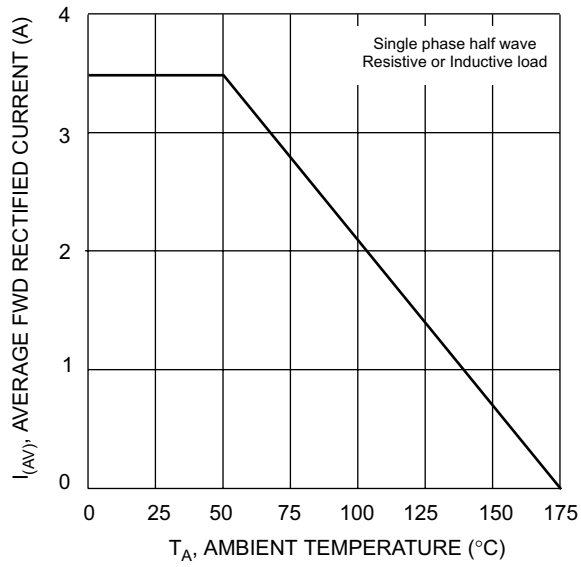


Fig. 1 Forward Current Derating Curve

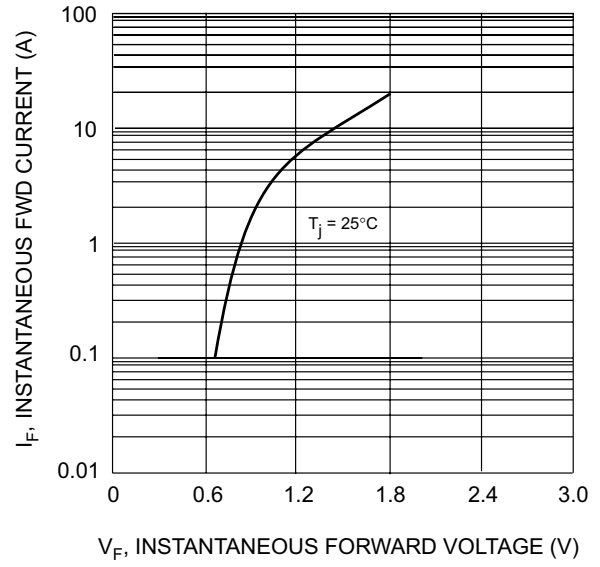


Fig. 2 Typical Forward Characteristics

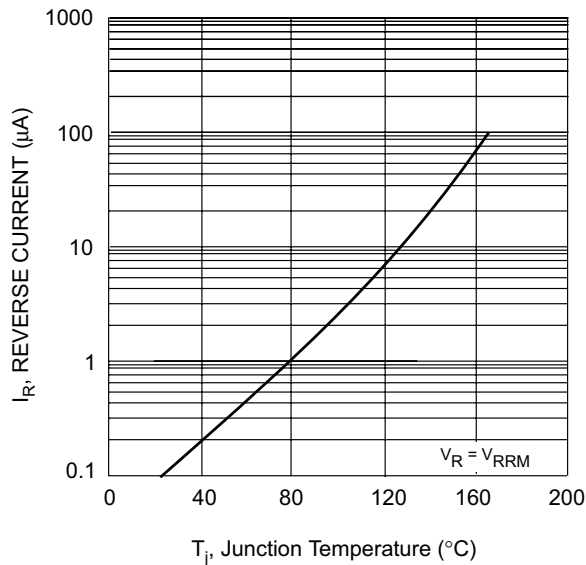


Fig. 3 Typical Reverse Characteristics

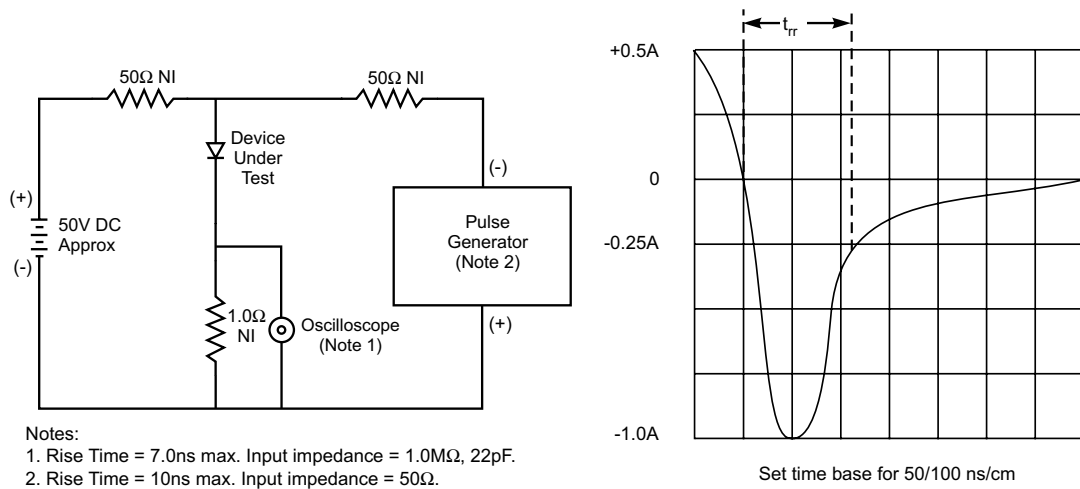


Fig. 4 Reverse Recovery Time Characteristic and Test Circuit

This datasheet has been downloaded from:

www.DatasheetCatalog.com

Datasheets for electronic components.



LittleDiode supplies new, hard to find or obsolete electronic components and semiconductors all over the world.

With over two million different components listed you are sure to find the part you need.

Feel free to visit us today at our online store:

LittleDiode.com

Looking forward to providing you with the best possible service.