

**DESCRIPTION**

2SC3101 is a silicon NPN epitaxial planar type transistor specifically designed for UHF power amplifiers applications.

**FEATURES**

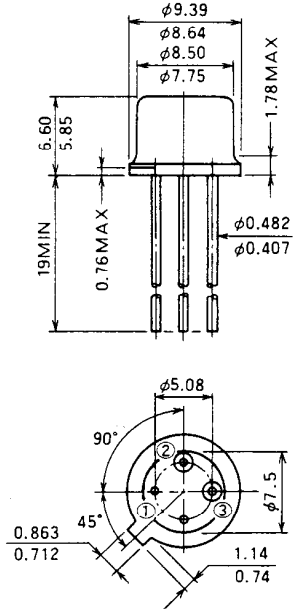
- High power gain:  $G_{pe} \geq 5.7\text{dB}$   
@ $V_{CC} = 12.5\text{V}$ ,  $f = 520\text{MHz}$ ,  $P_{in} = 0.8\text{W}$
- Emitter ballasted construction
- High ruggedness: Ability to withstand more than 20:1 load VSWR when operated at @ $V_{CC} = 15.2\text{V}$ ,  $f = 520\text{MHz}$ ,  $P_o = 3\text{W}$ .

**APPLICATION**

For drive stage and output stage of power amplifiers in UHF band.

**OUTLINE DRAWING**

Dimensions in mm



PIN :  
 ① EMITTER (CASE)  
 ② BASE  
 ③ COLLECTOR

**T-8E**

**ABSOLUTE MAXIMUM RATINGS** ( $T_C = 25^\circ\text{C}$  unless otherwise specified)

Symbol	Parameter	Conditions	Ratings	Unit
$V_{CEO}$	Collector to base voltage		35	V
$V_{EBO}$	Emitter to base voltage		4	V
$V_{CEO}$	Collector to emitter voltage	$R_{BE} = \infty$	17	V
$I_C$	Collector current		1	A
$P_C$	Collector dissipation	$T_C = 25^\circ\text{C}$	10	W
$T_j$	Junction temperature		175	$^\circ\text{C}$
$T_{stg}$	Storage temperature		-55 to 175	$^\circ\text{C}$

Note. Above parameters are guaranteed independently.

**ELECTRICAL CHARACTERISTICS** ( $T_C = 25^\circ\text{C}$  unless otherwise specified)

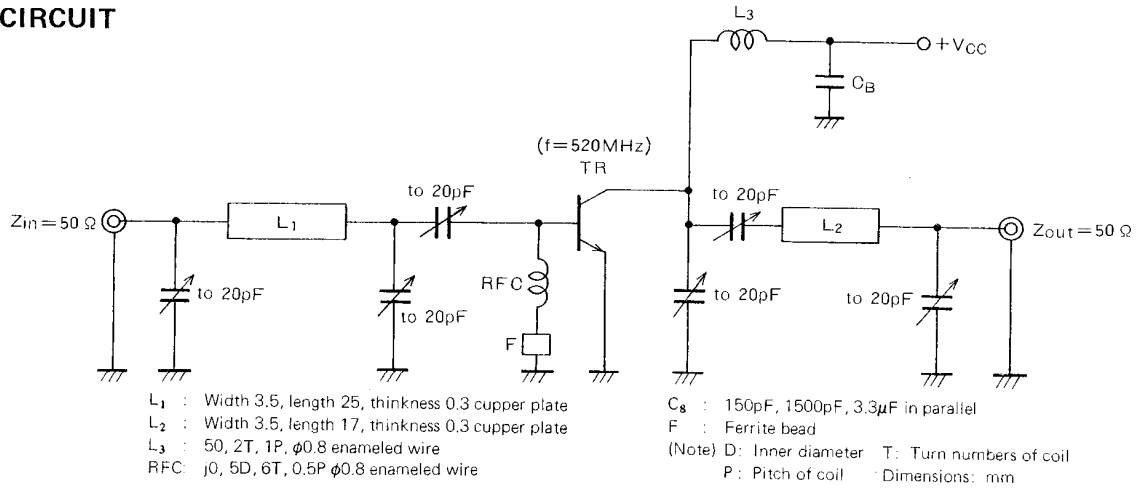
Symbol	Parameter	Test conditions	Limits			Unit
			Min	Typ	Max	
$V_{(BR)EBO}$	Emitter to base breakdown voltage	$I_E = 1\text{mA}$ , $I_C = 0$	4			V
$V_{(BR)CBO}$	Collector to base breakdown voltage	$I_C = 10\text{mA}$ , $I_E = 0$	35			V
$V_{(BR)CEO}$	Collector to emitter breakdown voltage	$I_C = 10\text{mA}$ , $R_{BE} = \infty$	17			V
$I_{CBO}$	Collector cutoff current	$V_{CB} = 15\text{V}$ , $I_E = 0$			300	$\mu\text{A}$
$I_{EBO}$	Emitter cutoff current	$V_{EB} = 2\text{V}$ , $I_C = 0$			300	$\mu\text{A}$
$h_{FE}$	DC forward current gain *	$V_{CB} = 10\text{V}$ , $I_C = 0.1\text{A}$	10	50	180	—
$P_o$	Output power	$V_{CC} = 12.5\text{V}$ , $P_{in} = 0.8\text{W}$ , $f = 520\text{MHz}$ .	3	3.5		W
$\eta_C$	Collector efficiency		50	60		%

Note. \* Pulse test,  $P_w = 150\mu\text{s}$ , duty = 5%.

Above parameters, ratings, limits and conditions are subject to change.

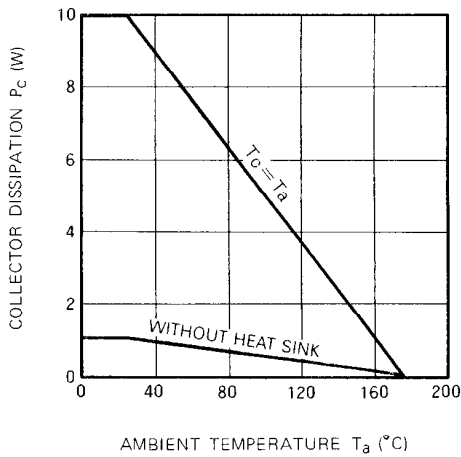
**NPN EPITAXIAL PLANAR TYPE**

**TEST CIRCUIT**

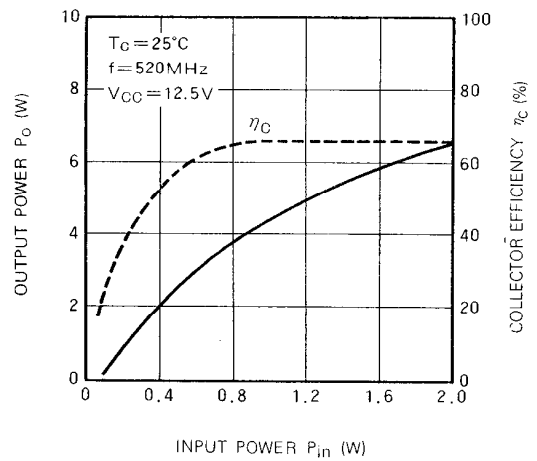


**TYPICAL PERFORMANCE DATA**

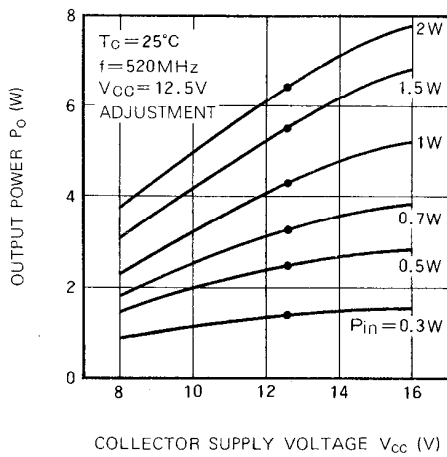
**COLLECTOR DISSIPATION VS. AMBIENT TEMPERATURE CHARACTERISTICS**



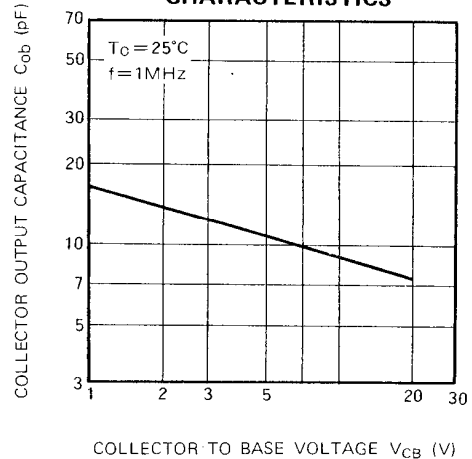
**OUTPUT POWER, COLLECTOR EFFICIENCY VS. INPUT POWER CHARACTERISTICS**



**OUTPUT POWER VS. COLLECTOR SUPPLY VOLTAGE CHARACTERISTICS**



**COLLECTOR OUTPUT CAPACITANCE VS. COLLECTOR TO BASE VOLTAGE CHARACTERISTICS**





LittleDiode supplies new, hard to find or obsolete electronic components and semiconductors all over the world.

With over two million different components listed you are sure to find the part you need.

Feel free to visit us today at our online store:

[LittleDiode.com](http://LittleDiode.com)

Looking forward to providing you with the best possible service.