

International
IR Rectifier

IRFK6H450, IRFK6J450

Isolated Base Power HEX-pak™ Assembly - Parallel Chip Configuration

- High Current Capability.
- UL recognised E78996.
- Electrically Isolated Base Plate.
- Easy Assembly into Equipment.



Description

The HEX-pak™ utilises the well-proven HEXFET™ die, combining low on-state resistance with high transconductance. These superior technology die are assembled by state of the art techniques into the TO-240 package, featuring 2.5kV rms isolation and solid M5 screw connections. The small footprint means the package is highly suited to power applications where space is a premium. Available in two versions, IRFK.H... for fast switching and IRFK.J... for oscillation sensitive applications.

$$V_{DS} = 500V$$

$$R_{DS(on)} = 67m\Omega$$

$$I_D = 66A$$

Absolute Maximum Rating

	Parameter	Max.	Units
I_D @ $T_C=25^\circ C$	Continuous Drain Current	66	A
I_D @ $T_C=100^\circ C$	Continuous Drain Current	42	A
I_{DM}	Pulse Drain Current	264	A ①
P_D @ $T_C=25^\circ C$	Maximum Power Dissipation	625	W
V_{GS}	Gate-to-Source Voltage	20	V
V_{INS}	R.M.S. Isolation Voltage, circuit to base	2.5	kV
T_J	Operating Junction Temperature Range	-40 to 150	$^\circ C$
T_{STG}	Storage Temperature Range	-40 to 150	$^\circ C$

Thermal and Mechanical Specifications

	Parameter	Min.	Typ.	Max.	Units
R_{thJC}	Junction-to-Case	-	-	0.20	K/W ②
R_{thCS}	Case-to-Sink, smooth & greased surface	-	0.1	-	K/W
T	Mounting Torque +10%				③
	HEXpak to Heatsink	-	5	-	Nm
	Busbar to HEXpak	-	3	-	Nm
wt	Approximate Weight	-	140	-	g
		-	5	-	oz

Notes:

- ① - Repetitive Rating: Pulse width limited by maximum junction temperature see figure 8.
- ② - Per Module.
- ③ - A mounting compound is recommended and the torque should be rechecked after a period of three hours to allow for the spread of the compound.

IRFK6H450, IRFK6J450



Electrical Characteristics @ $T_J = 25^\circ\text{C}$ (Unless otherwise specified)

	Parameter	Min.	Typ.	Max.	Units	Test Conditions	
$B_{V_{DS}}$	Drain-to-Source Breakdown voltage	500	-	-	V	$V_{GS}=0\text{V}$, $I_D=1.0\text{mA}$	
$R_{DS(on)}$	Static Drain-to-Source On-State Resistance	-	50	67	m Ω	$V_{GS}=10\text{V}$, $I_D=42\text{A}$	
$I_{D(on)}$	On-State Drain Current	66	-	-	A	$V_{DS} > I_{D(on)} \times R_{DS(on)}^{\text{max}}$, $V_{GS}=10\text{V}$	
$V_{GS(th)}$	Gate Threshold Voltage	2.0	-	4.0	V	$V_{DS}=V_{GS}$, $I_D=1.5\text{mA}$	
g_{fs}	Forward Transconductance ^④	48	72	-	S	$V_{DS} > 50\text{V}$, $I_D=42\text{A}$	
I_{DSS}	Zero Gate Voltage Drain Current	-	-	1.5	mA	$V_{DS}=V_{DS}^{\text{max}}$, $V_{GS}=0\text{V}$	
		-	-	6.0	mA	$V_{GS}=10\text{V}$, $T_C=125^\circ\text{C}$, $V_{DS}=V_{DS}^{\text{max}} \times 0.8$	
I_{GSS}	Gate-to-Source Leakage Forward	-	-	600	nA	$V_{GS}=20\text{V}$	
I_{GSS}	Gate-to-Source Leakage Reverse	-	-	-600	nA	$V_{GS}=-20\text{V}$	
Q_g	Total Gate Charge	-	800	880	nC	$I_D=66\text{A}$, $V_{GS}=10\text{V}$,	
Q_{gs}	Gate-to-Source Charge	-	70	105	nC	$V_{DS}=V_{DS}^{\text{max}} \times 0.8$	
Q_{gd}	Gate-to-Drain ("Miller") Charge	-	260	400	nC		
$t_{d(on)}$	Turn-on Delay Time	IRFK6H450	-	55	-	ns	$V_{DD}=210\text{V}$, $I_D=42\text{A}$,
		IRFK6J450	-	65	-	ns	
t_r	Rise Time	IRFK6H450	-	55	-	ns	$V_{GS}=10\text{V}$,
		IRFK6J450	-	70	-	ns	
$t_{d(off)}$	Turn-off Delay Time	IRFK6H450	-	330	-	ns	$R_{SOURCE}=3.3\Omega$
		IRFK6J450	-	440	-	ns	
t_f	Fall Time	IRFK6H450	-	70	-	ns	
		IRFK6J450	-	110	-	ns	
L_{DS}	Drain-to-Source Inductance	-	18	-	nH		
C_{iss}	Input Capacitance	-	8.0	-	nF	$V_{GS}=0\text{V}$, $V_{DS}=25\text{V}$,	
C_{oss}	Output Capacitance	-	2.0	-	nF	$f=1.0\text{MHz}$	
C_{rss}	Reverse Transfer Capacitance	-	0.8	-	nF		
	Linear Derating Factor	-	-	5	W/K		

Source-Drain Diode Ratings and Characteristics

	Parameter	Min.	Typ.	Max.	Units	Test Conditions
I_S	Continuous Source Current (Body Diode)	-	-	66	A	
I_{SM}	Pulsed Source Current (Body Diode)	-	-	230	A	
V_{SD}	Diode Forward Voltage	-	-	1.4	V	$V_{GS}=0\text{V}$, $I_S=66\text{A}$, $T_C=25^\circ\text{C}$
t_{rr}	Reverse Recovery Time	280	580	1200	ns	$di/dt=400\text{A}/\mu\text{s}$, $T_J=150^\circ\text{C}$
Q_{rr}	Reverse Recovered Charge	19.0	42.0	90.0	μC	$I_S=66\text{A}$

Notes:

④ - Pulse Width $\leq 300\mu\text{s}$; Duty cycle $\leq 2\%$.



IRFK6H450, IRFK6J450

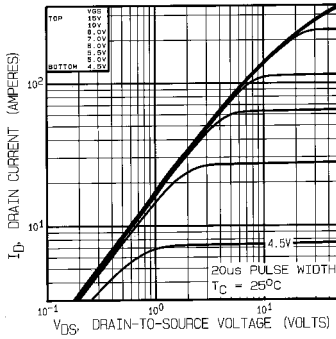


Fig 1. Typical Output Characteristics, $T_C=25^\circ\text{C}$

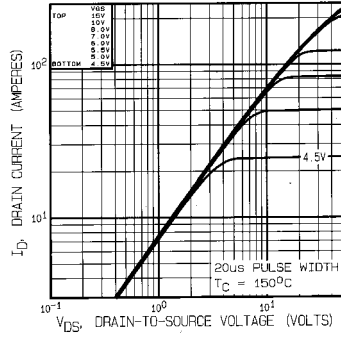


Fig 2. Typical Output Characteristics, $T_C=150^\circ\text{C}$

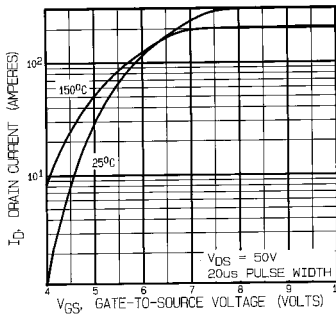


Fig 3. Typical Transfer Characteristics

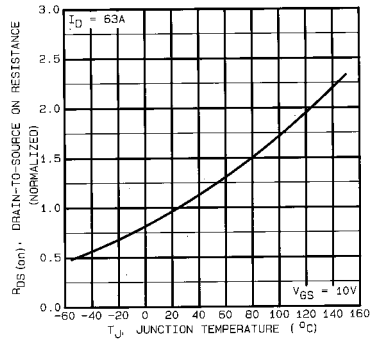


Fig 4. Normalized On-Resistance Vs. Temperature

IRFK6H450, IRFK6J450

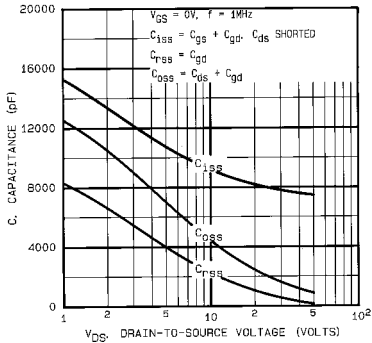


Fig 5. Typical Capacitance Vs. Drain-to-Source Voltage

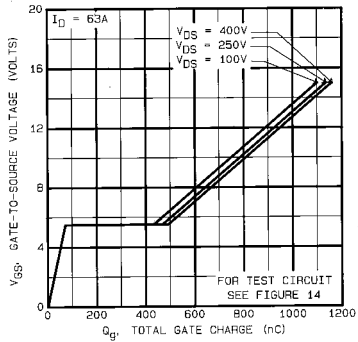


Fig 6. Typical Gate Charge Vs. Gate-to-Source Voltage

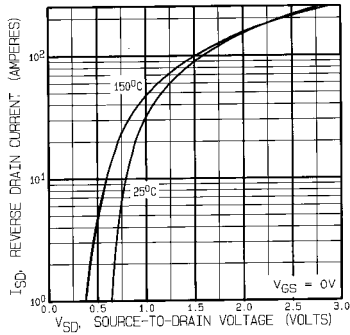


Fig 7. Typical Source-Drain Diode Forward Voltage

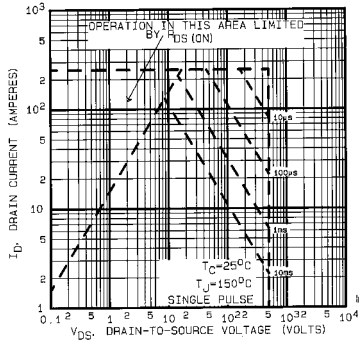


Fig 8. Maximum Safe Operating Area



IRFK6H450, IRFK6J450

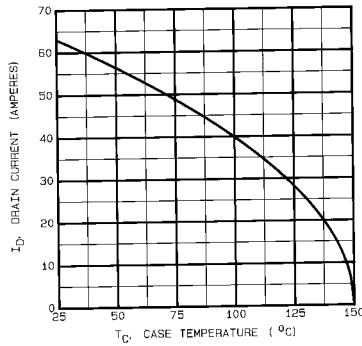


Fig 9. Maximum Drain Current Vs. Case Temperature

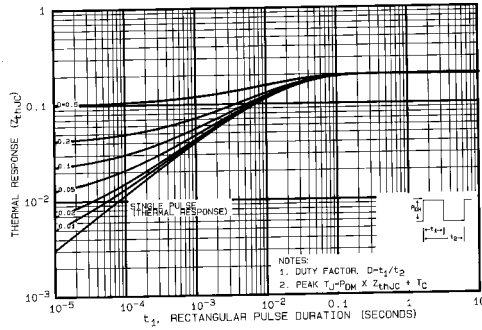


Fig 10. Maximum Effective Transient Thermal Impedance, Junction-to-Case

IRFK6H450, IRFK6J450

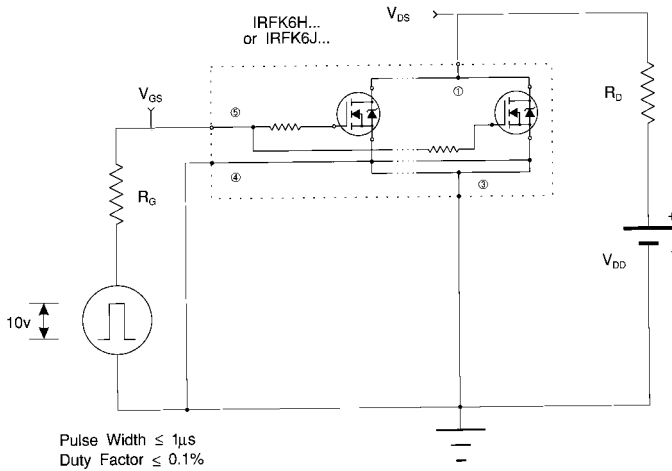


Fig 11a. Switching Time Test Circuit

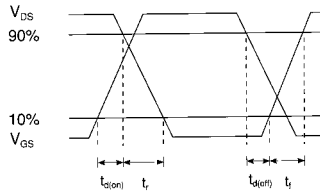
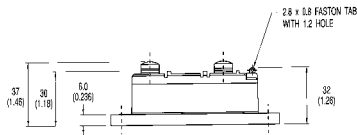
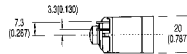
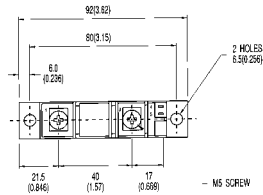
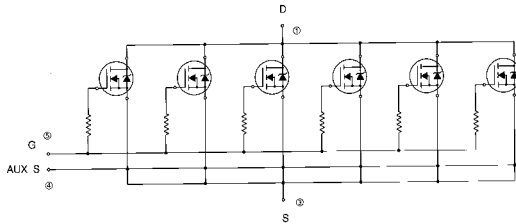


Fig 11b. Switching Time Waveforms



IRFK6H450, IRFK6J450

Circuit Configuration and Outline



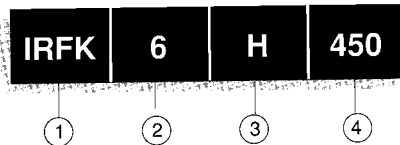
NOTE:
DEVICE IS SUPPLIED WITH
AUXILIARY LEADS 200(7.87) LONG

All dimensions in millimetres (inches)

IRFK6H450, IRFK6J450



Part Numbering



1. - HEX-pak Module.
2. - Number of HEXFETs in parallel.
3. - H - Fast switching.
- J - Oscillation resistant for sensitive applications.
4. - Voltage code:-
 - 054 - 60V
 - 150 - 100V
 - 250 - 200V
 - 350 - 400V
 - 450 - 500V
 - C50 - 600V

WORLD HEADQUARTERS: 233 Kansas St., EL SEGUNDO, California 90245, USA. Tel:(213) 772-2000. Tlx:684464. Fax:(213) 772-9028
EUROPEAN HEADQUARTERS: Hurst Green, OXTED, Surrey RH8 9BB, UK. Tel:(0883) 713215. Tlx:95219. Fax:(0883) 714234.

CANADA: 101 Bentley St., Markham, ONTARIO L3R 3L1. Tel:(416)475-1897. Tlx:06-966 650. Fax:(416)475-8801
CZECHOSLOVAKIA: Macurova 19/1565, Box 30. 149 00 PRAGUE. Tel:(2) 792 6831. Fax:(2) 792 6831.
DENMARK: P.O. Box 70, Krogholmvej 51, DK-2880 BAGVAERD. Tel:(45) 44 37 71 50. Fax (45) 44 37 71 52.
FRANCE: 123 Rue de Petit Vaux, 91360 EPINAY sur ORGE. Tel:(33)64.54.83.29. Tlx:600943. Fax:(33)64.54.83.30.
FINLAND: Biliskogsvägen 19, 02580 Sjundea St. Tel:(0) 262 8144. Fax (0) 262 8150.
GERMANY: Saalburgstr. 157, D-6380 BAD HOIMBURG. Tel:(61)72 37066. Tlx:410404. Fax:(61)72 37065.
HUNGARY: Szent Istvan Park 15, H-1137 BUDAPEST. Tel:(1) 1296 822. Fax:(1) 1298 822.
HONG KONG: 202 Peter Building, 60 Queens Road Central. HONG KONG. Tel:(852) 252 36355. Fax: (85) 284 5298.
ITALY: Via Liguria 49, 10071 Borgaro. TORINO. Tel:(011)470 14 84. Tlx:221257. Fax:(011)470 42 90.
Via Zucca 8, 20017 Rho MILANO. Tel:(02)93 50 36 50. Fax:(02)93 50 36 55.
Via Arno 1, 40139 BOLOGNA. Tel:(051)49 33 07. Fax:(051)49 54 80.
INDIA: 31 Greenacre, 5 Union Park, Khar (W), BOMBAY 400 052. Tel:(022)3303036/533779/540242. Tlx:011-71481.
JAPAN: K & H Bldg. 2F, 3-30-4 Nishi-kechukuro, Toshima-ku, TOKYO, Japan 171. Tel:(03)983 0841. Fax:(03)983 0642.
SINGAPORE: HEX 10-01 Fortune Centre, 190 Middle Road, SINGAPORE 0718. Tel:(65)336 3922/337 4695/336 8286. Fax: (65)337 4692.
SWEDEN: Box 86, S-162 12 Vallingby 1, STOCKHOLM. Tel:(08)870035. Fax:(08)874242.
SWITZERLAND: CH-8032 ZURICH, Kirchenweg 5. Tel:(01)388 8702/8686. Fax:(01)393 5108/2379.

U.S.A.:
Central Zone: 2401 Plum Grove Road, Suite 111, PALATINE, IL60067. Tel:(312)397-0002. Fax:(312)397-0114.
Eastern Zone: 71 Grand Avenue, PALISADES PARK, NJ07650. Tel:(201)943-4554. Fax:(201)943-5754.
Southern Zone: 800 Office Plaza Blvd., Suite 401, KISSIMMEE, FL32743. Tel:(407)933-2383. Fax:(407)933-2293.
Western Zone: 222 Kansas Street, EL SEGUNDO, CA90245. Tel:(213)607-8886. Fax:(213)640-8553.

Sales Offices, Agents and Distributors in Major Cities throughout the World.

In the interest of product improvement INTERNATIONAL RECTIFIER reserves the right to change specifications at any time without notice.

MJW/192



LittleDiode supplies new, hard to find or obsolete electronic components and semiconductors all over the world.

With over two million different components listed you are sure to find the part you need.

Feel free to visit us today at our online store:

LittleDiode.com

Looking forward to providing you with the best possible service.