

GERMANIUM POWER TRANSISTORS

Type Number	Case Type	V_{CBO} V	V_{CEO} V	V_{EBO} V	V_{CER} V	V_{CES} V	CURRENT GAIN			SATURATION VOLTAGES				θ_{j-c} °C/W	
							Min.	h_{FE} Max.	$V_{CE} @ I_c$ V	$V_{CE(10)}$ V	$V_{BE(10)}$ V	$I_c @ I_b$ A	$I_c @ I_b$ A		
60 AMP GERMANIUM PNP (Cont.)															
SDT1909	MT-23	60	45				15		2.0	50.0	.45	1.25	50.0	5.000	.60
SDT1910	MT-23	40	30				15		2.0	50.0	.45	1.25	50.0	5.000	.60
SDT2008	MT-22	80	60				15		2.0	50.0	.45	1.25	50.0	5.000	.60
SDT2009	MT-22	60	45				15		2.0	50.0	.45	1.25	50.0	5.000	.60
SDT2010	MT-22	40	30				15		2.0	50.0	.45	1.25	50.0	5.000	.60
2N4276	TO-3	30	20	20		30	60	180	2	15	.30	1.0	60.0	6.000	.50
2N4277	TO-3	30	20	20		30	80	240	2	15	.30	1.0	60.0	6.000	.50
2N4278	TO-3	45	30	25		45	60	180	2	15	.30	1.0	60.0	6.000	.50
2N4279	TO-3	45	30	25		45	80	240	2	15	.30	1.0	60.0	6.000	.50
2N4280	TO-3	60	45	30		60	60	180	2	15	.30	1.0	60.0	6.000	.50
2N4281	TO-3	60	45	30		60	80	240	2	15	.30	1.0	60.0	6.000	.50
2N4282	TO-3	75	60	40		75	60	180	2	15	.30	1.0	60.0	6.000	.50
2N4283	TO-3	75	60	40		75	80	240	2	15	.30	1.0	60.0	6.000	.50

65 AMP GERMANIUM PNP Observe (-) Negative Polarity															
Type Number	Case Type	V_{CBO} V	V_{CEO} V	V_{EBO} V	V_{CER} V	V_{CES} V	Min.	h_{FE} Max.	$V_{CE} @ I_c$ V	$V_{CE(10)}$ V	$V_{BE(10)}$ V	$I_c @ I_b$ A	$I_c @ I_b$ A	θ_{j-c} °C/W	
2N2730	TO-68	80	60	30			15		2.0	65.0	.45	2.00	65.0	6.500	.50
2N2731	TO-68	60	45	30.0			15		2.0	65.0	.45	2.00	65.0	6.500	.50
2N2732	TO-68	40	30	20.0			15		2.0	65.0	.45	2.00	65.0	6.500	.50
2N2733	MT-23	80	60	30.0			15		2.0	65.0	.45	2.00	65.0	6.500	.60
2N2734	MT-23	60	45	30.0			15		2.0	65.0	.45	2.00	65.0	6.500	.60
2N2735	MT-23	40	30	20.0			15		2.0	65.0	.45	2.00	65.0	6.500	.60
2N2736	MT-22	80	60	30.0			15		2.0	65.0	.45	2.00	65.0	6.500	.60
2N2737	MT-22	60	45	30.0			15		2.0	65.0	.45	2.00	65.0	6.500	.60
2N2738	MT-22	40	30	20.0			15		2.0	65.0	.45	2.00	65.0	6.500	.60
SDT1860	TO-68	80	60				20		2.0	65.0	.30	1.25	65.0	6.500	.50
SDT1861	TO-68	60	45				20		2.0	65.0	.30	1.25	65.0	6.500	.50
SDT1862	TO-68	40	30				20		2.0	65.0	.30	1.25	65.0	6.500	.50
SDT1960	MT-23	80	60				20		2.0	65.0	.30	1.25	65.0	6.500	.50
SDT1961	MT-23	60	45				20		2.0	65.0	.30	1.25	65.0	6.500	.50
SDT1962	MT-23	40	30				20		2.0	65.0	.30	1.25	65.0	6.500	.50

Type Number	Case Type	V_{CBO} V	V_{CEO} V	V_{EBO} V	V_{CER} V	V_{CES} V	Min.	h_{FE} Max.	$V_{CE} @ I_c$ V	$V_{CE(10)}$ V	$V_{BE(10)}$ V	$I_c @ I_b$ A	$I_c @ I_b$ A	θ_{j-c} °C/W	
100 AMP GERMANIUM PNP Observe (-) Negative Polarity TO-68															
SC100	TO-68	30	20	15		30	80	160	2.0	25	0.3	1.0	100	10	0.45
SC101	TO-68	30	20	15		30	125	250	2.0	25	0.3	1.0	100	10	0.45
SC102	TO-68	45	30	20		45	80	160	2.0	25	0.3	1.0	100	10	0.45
SC103	TO-68	45	30	20		45	125	250	2.0	25	0.3	1.0	100	10	0.45
SC104	TO-68	60	45	25		60	80	160	2.0	25	0.3	1.0	100	10	0.45
SC105	TO-68	60	45	25		60	125	250	2.0	25	0.3	1.0	100	10	0.45

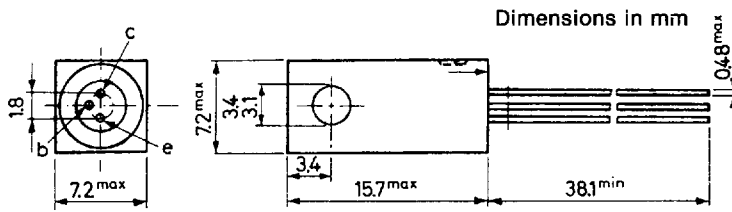
See Curves on Page 17

Type Number	I_c Max Amps.	V_{CEO} @ I_c V @ A	V_{CBO} @ I_{CBO} V @ ma	h_{FE} @ I_c A	V_{EBO} @ I_{EBO} V @ ma	$V_{CE(10)}$ @ I_c V @ A	V_{BE} V	f_{α} KHz	Thermal Res. °C/W					
15-25 AMP TO-3 (except Emitter Pin Dia. .038 to .063) HIGH POWER														
DTG-110B	25	40	5	90	20	65/300	1.0	2.0	100	0.5	5.0	.33	850	.08
DTG-600	25	50	5	75	20	50/	5.0	1.0	100	0.75	25.0	1.4	850	1.0
DTG-601	25	60	5	75	20	50/	5.0	1.0	100	0.75	25.0	1.4	850	1.0
DTG-602	25	70	5	90	20	50/	5.0	1.0	100	0.75	25.0	1.4	850	1.0
DTG-603	25	80	5	90	20	50/	5.0	1.0	100	0.75	25.0	1.4	850	1.0
DTG-1010	15	110	5	325	10			1.0	200	0.5	12	1.0	250	0.8
DTG-1110	15	80	8	200	15			1.0	100	0.5	10	1.0	450	0.8
DTG-1200	15	120	8	120	10	22.5/	8.0	1.0	200	0.5	12	1.0	250	0.8
DTG-2000	25	30	8	60	10	25	8.0	1.0	200	0.9	25	1.0	250	0.8
DTG-2100	25	60	8	80	10	25	8.0	1.0	200	0.9	25	1.0	250	0.8
DTG-2200	25	80	8	100	10	25	8.0	1.0	200	0.9	25	1.0	250	0.8
DTG-2300	25	100	8	120	10	25	8.0	1.0	200	0.9	25	1.0	250	0.8
DTG-2400	25	120	8	140	10	25	8.0	1.0	200	0.9	25	1.0	250	0.8
DTG-2400M	25	120	10	140	10	25/125	10.0	1.5	500	0.9	25	1.0	250	1.0

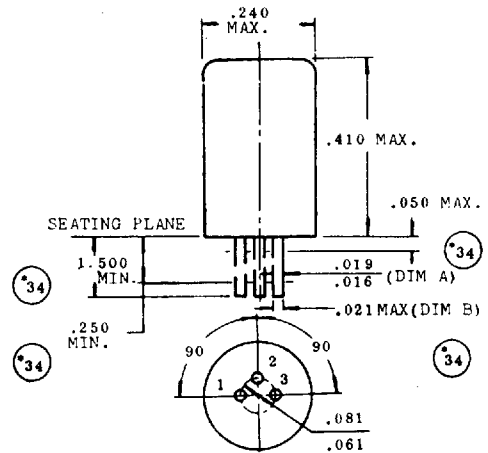
GERMANIUM POWER TRANSISTORS

CASE OUTLINE DRAWINGS & DIMENSIONS

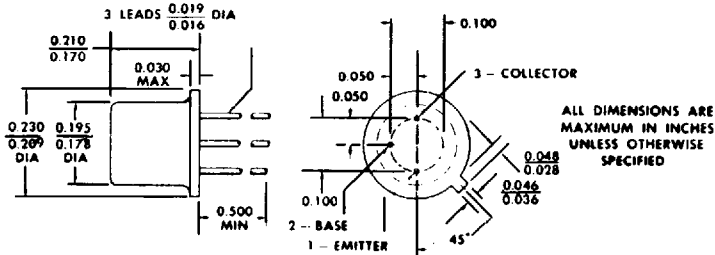
NS257



TO-1



TO-18



THE COLLECTOR IS ELECTRICAL CONTACT WITH THE CASE.

ALL JEDEC TO-18 DIMENSIONS AND NOTES ARE APPLICABLE.



GERMANIUM POWER DEVICES CORP.

300 Brickstone Square · York Street · P.O. Box 3065
Shawsheen Village Station · Andover, Massachusetts 01810
Telephone (508) 475-5982 · FAX (508) 470-1512

26

Printed in U.S.A.

■ 3947375 0000689 52T ■

54134

This datasheet has been downloaded from:

www.DatasheetCatalog.com

Datasheets for electronic components.



LittleDiode supplies new, hard to find or obsolete electronic components and semiconductors all over the world.

With over two million different components listed you are sure to find the part you need.

Feel free to visit us today at our online store:

LittleDiode.com

Looking forward to providing you with the best possible service.