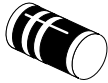


**CLL4729A
THRU
CLL4764A**

**1.0W ZENER DIODE
5% TOLERANCE**



MELF CASE

CentralTM
Semiconductor Corp.

DESCRIPTION:

The CENTRAL SEMICONDUCTOR CLL4729A Series Silicon Zener Diode is a high quality voltage regulator for use in surface mount industrial, commercial, entertainment and computer applications.

Marking Code: Cathode Band

ABSOLUTE MAXIMUM RATINGS

Power Dissipation

Operating and Storage Temperature

SYMBOL

P_D

T_J, T_{stg}

1.0

-65 to +200

UNITS

W

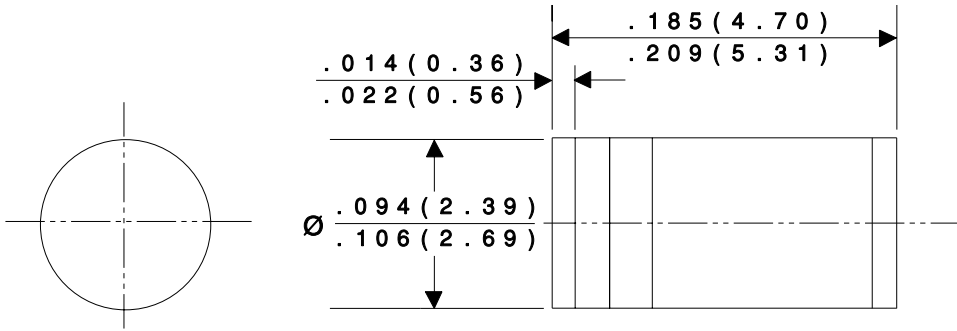
°C

ELECTRICAL CHARACTERISTICS ($T_A=25^{\circ}C$), $V_F=1.2MAX$ @ $I_F = 200mA$ FOR ALL TYPES.

TYPE NO.	ZENER VOLTAGE $V_Z @ I_{Z1}$	TEST CURRENT I_{Z1}	MAXIMUM ZENER IMPEDANCE			MAXIMUM REVERSE CURRENT $I_R @ V_R$		MAXIMUM DC CURRENT I_{ZM}
	VOLTS	mA	$Z_{Z1} @ I_{Z1}$	$Z_{Z2} @ I_{Z2}$		μA	VOLTS	mA
			Ω	Ω	mA			
CLL4729A	3.6	69	10	400	1.0	100	1.0	1260
CLL4730A	3.9	64	9.0	400	1.0	50	1.0	1190
CLL4731A	4.3	58	9.0	400	1.0	10	1.0	1070
CLL4732A	4.7	53	8.0	500	1.0	10	1.0	970
CLL4733A	5.1	49	7.0	550	1.0	10	1.0	890
CLL4734A	5.6	45	5.0	600	1.0	10	2.0	810
CLL4735A	6.2	41	2.0	700	1.0	10	3.0	730
CLL4736A	6.8	37	3.5	700	1.0	10	4.0	660
CLL4737A	7.5	34	4.0	700	0.5	10	5.0	605
CLL4738A	8.2	31	4.5	700	0.5	10	6.0	550
CLL4739A	9.1	28	5.0	700	0.5	10	7.0	500
CLL4740A	10	25	7.0	700	0.25	10	7.6	454
CLL4741A	11	23	8.0	700	0.25	5.0	8.4	414
CLL4742A	12	21	9.0	700	0.25	5.0	9.1	380
CLL4743A	13	19	10	700	0.25	5.0	9.9	344
CLL4744A	15	17	14	700	0.25	5.0	11.4	304
CLL4745A	16	15.5	16	700	0.25	5.0	12.2	285
CLL4746A	18	14	20	750	0.25	5.0	13.7	250
CLL4747A	20	12.5	22	750	0.25	5.0	15.2	225
CLL4748A	22	11.5	23	750	0.25	5.0	16.7	205
CLL4749A	24	10.5	25	750	0.25	5.0	18.2	190
CLL4750A	27	9.5	35	750	0.25	5.0	20.6	170
CLL4751A	30	8.5	40	1000	0.25	5.0	22.8	150
CLL4752A	33	7.5	45	1000	0.25	5.0	25.1	135
CLL4753A*	36	7.0	50	1000	0.25	5.0	27.4	125
CLL4754A*	39	6.5	60	1000	0.25	5.0	29.7	115
CLL4755A*	43	6.0	70	1500	0.25	5.0	32.7	110
CLL4756A*	47	5.5	80	1500	0.25	5.0	35.8	95
CLL4757A*	51	5.0	95	1500	0.25	5.0	38.8	90
CLL4758A*	56	4.5	110	2000	0.25	5.0	42.6	80
CLL4759A*	62	4.0	125	2000	0.25	5.0	47.1	70
CLL4760A*	68	3.7	150	2000	0.25	5.0	51.7	65
CLL4761A*	75	3.3	175	2000	0.25	5.0	56	60
CLL4762A*	82	3.0	200	3000	0.25	5.0	62.2	55
CLL4763A*	91	2.8	250	3000	0.25	5.0	69.2	50
CLL4764A*	100	2.5	350	3000	0.25	5.0	76	45

* Available on special order only, please consult factory.

All dimensions in inches (mm).





LittleDiode supplies new, hard to find or obsolete electronic components and semiconductors all over the world.

With over two million different components listed you are sure to find the part you need.

Feel free to visit us today at our online store:

LittleDiode.com

Looking forward to providing you with the best possible service.