

Fast Recovery High Voltage Silicon Rectifiers



Part Number	Repetitive peak reverse voltage	Average forward current	Non-repetitive peak surge current	Maximum forward voltage drop (at 10mA, Ta = 25°C)	Maximum reverse current, repetitive (at VRRM, Ta = 25°C)	Maximum Junction Capacitance (at VRRM=0V, Ta = 25°C)
	VRRM kV	Io* mA	IFSM** A	VFM Volts	IRRM µA	@ 1MHz pf
CS57-04A	4	25	1.0	15	1	2
CS54-06A	6			24		
CS54-08A	8			30		
CS52-10A	10	10	0.5	36		1
CS52-12A	12			45		
CS52-14A	14			51		
CS53-16A	16			60		
CS53-18A	18			66		
CS53-20A	20			75		
CS56-24	24			75		

Special Notes:

*Single phase, half sine wave in oil bath or filled epoxy at ambient temperature = 25°C.

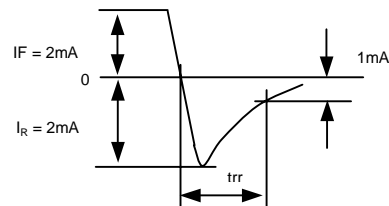
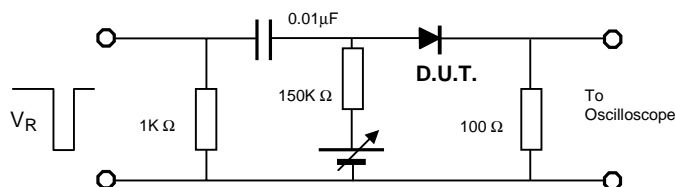
**1/2 cycle, 60Hz at full load.

Storage and Operating Junction Temperature, Tj = -65°C to +150°C.

Packaging: Bulk or tape & reel available (please specify).

Reverse Recovery Time = 80nsec max. @ Ta = 25°C, IF = 2mA, IR = 1 mA. ("A" type)

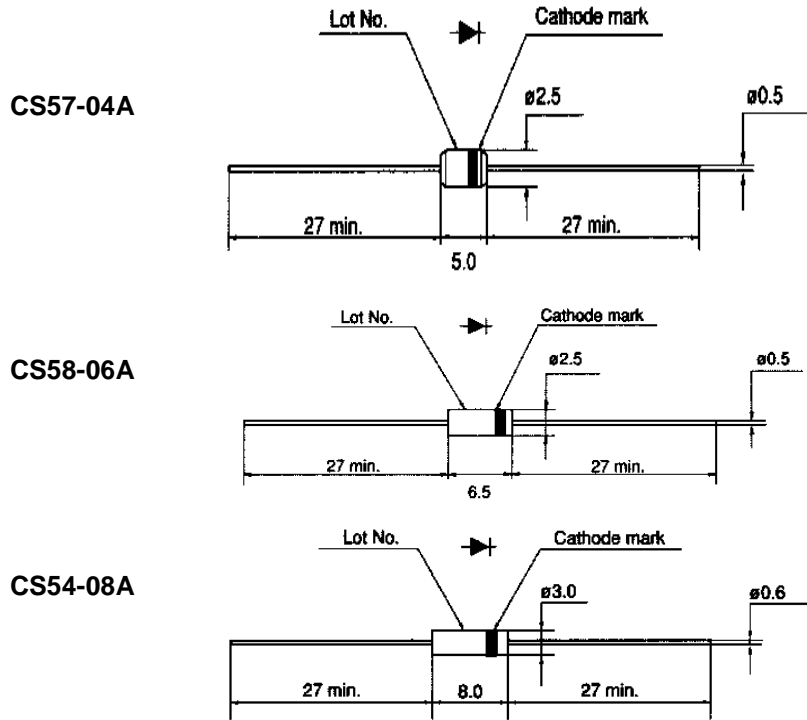
Reverse Recovery Time = 100nsec max. @ Ta = 25°C, IF = 2mA, IR = 1 mA. (Non "A" type)



Collmer Semiconductor Inc.

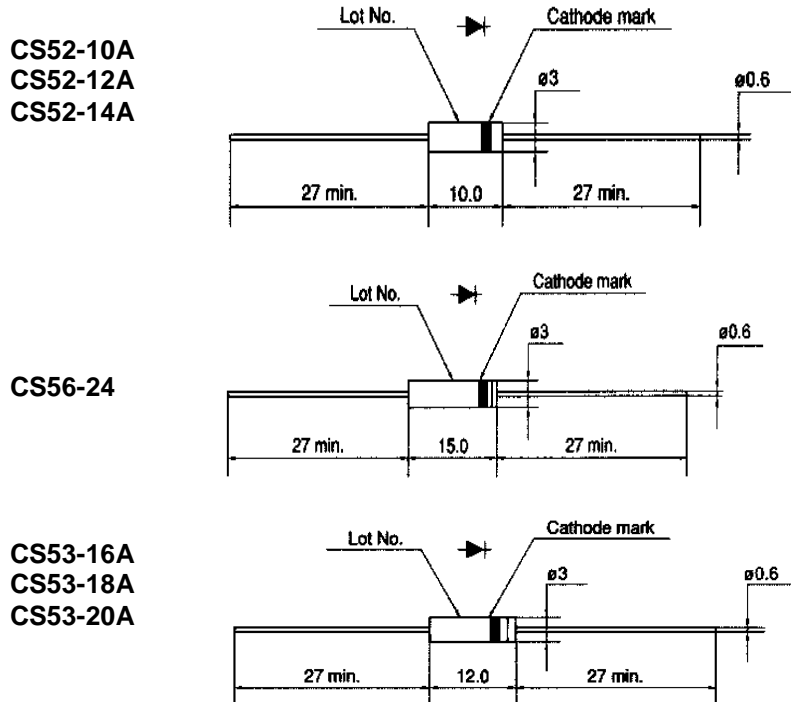
PO Box 702708 • DALLAS, TEXAS 75370 • PH 972/733-1700 • FAX 972/380-2126
e-mail: sales@collmer.com / www.collmer.com

Diode Dimensions and Markings



Cathode mark (White)

V _{RRM}	Type	Mark
4kV	CS57-04A	▶▶▶
6kV	CS58-06A	▶▶▶▶
8kV	CS54-08A	▶▶▶▶▶



Cathode mark (White)

V _{RRM}	Type	Mark
10kV	CS52-10A	◆◆◆
12kV	CS52-12A	◆◆◆◆
14kV	CS52-14A	◆◆◆◆◆
16kV	CS53-16A	●●●●
18kV	CS53-18A	~
20kV	CS53-20A	~
24kV	CS56-24	■

Collmer Semiconductor Inc.

PO Box 702708 • DALLAS, TEXAS 75370 • PH 972/733-1700 • FAX 972/380-2126

e-mail: sales@collmer.com / www.collmer.com



LittleDiode supplies new, hard to find or obsolete electronic components and semiconductors all over the world.

With over two million different components listed you are sure to find the part you need.

Feel free to visit us today at our online store:

LittleDiode.com

Looking forward to providing you with the best possible service.