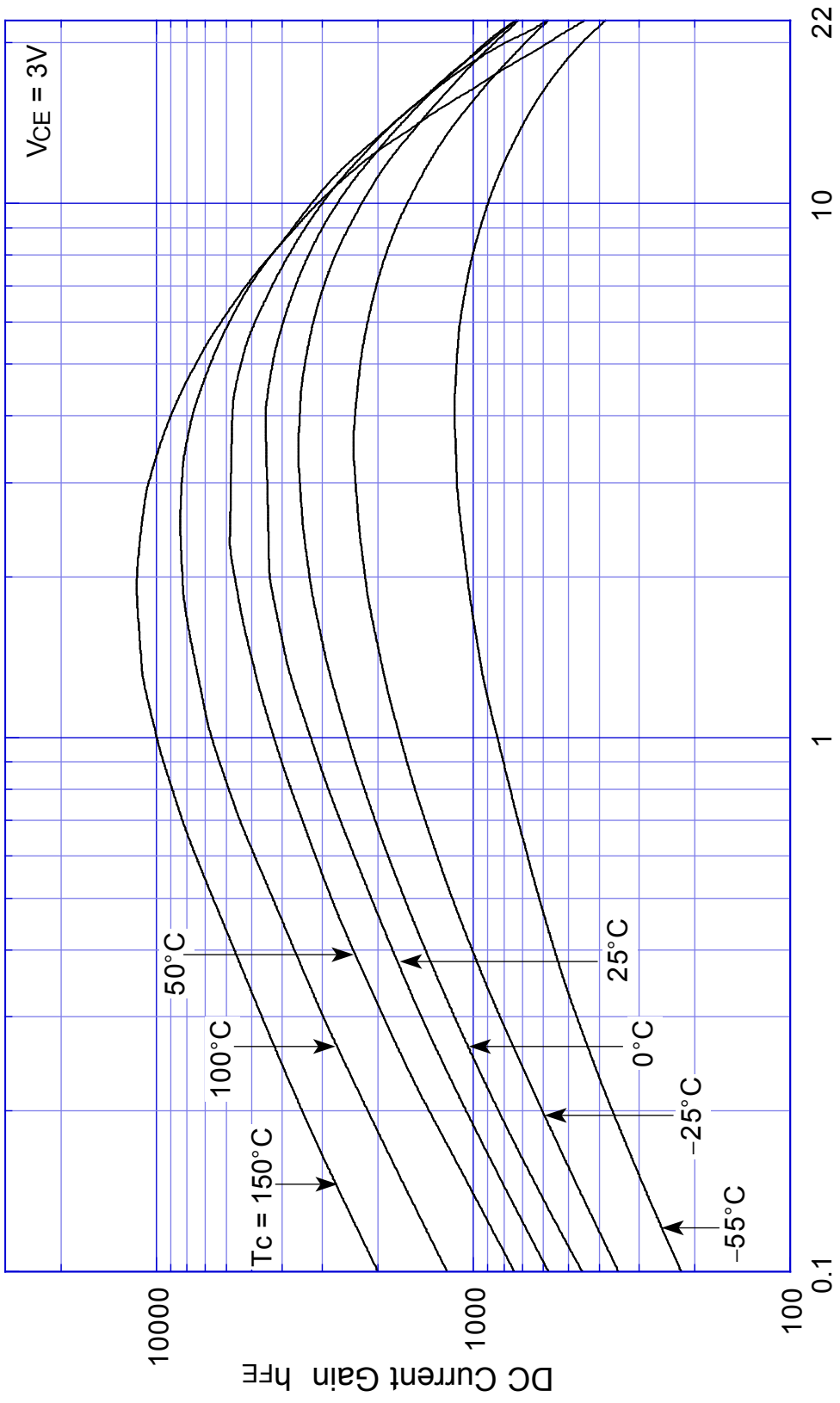


2SD1027

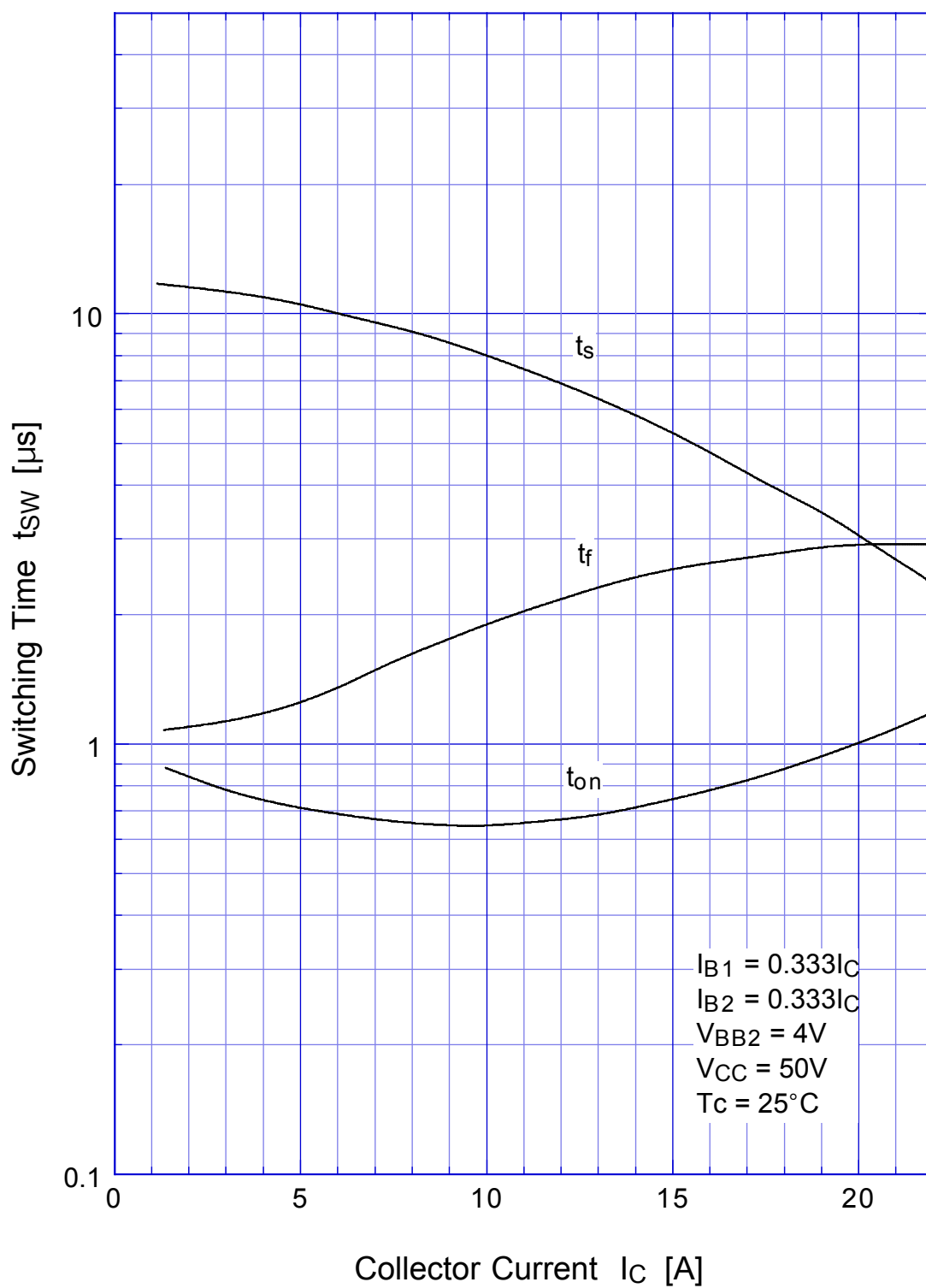
$h_{FE} - I_C$



Collector Current I_C [A]

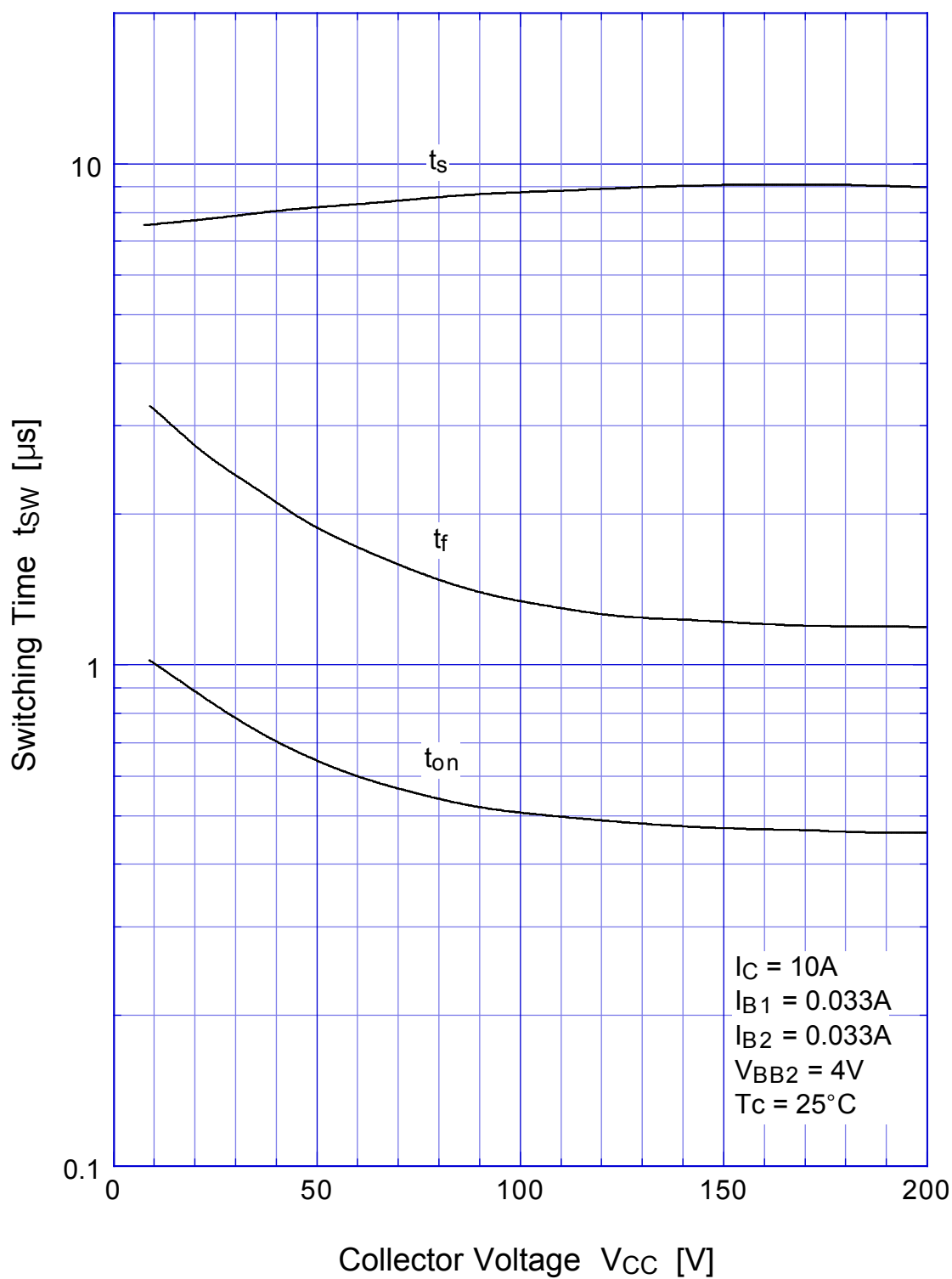
2SD1027

Switching Time - I_C



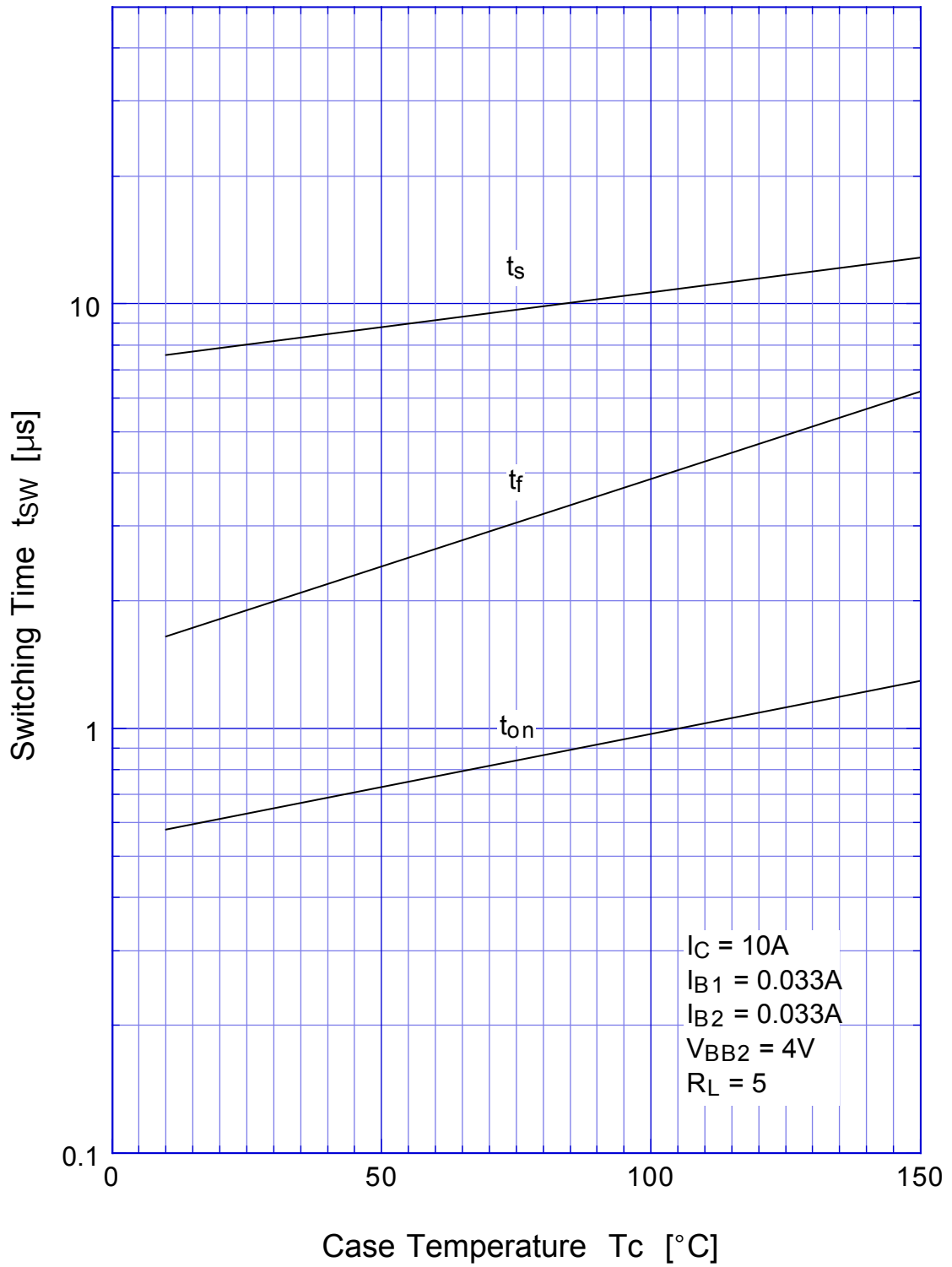
2SD1027

Switching Time



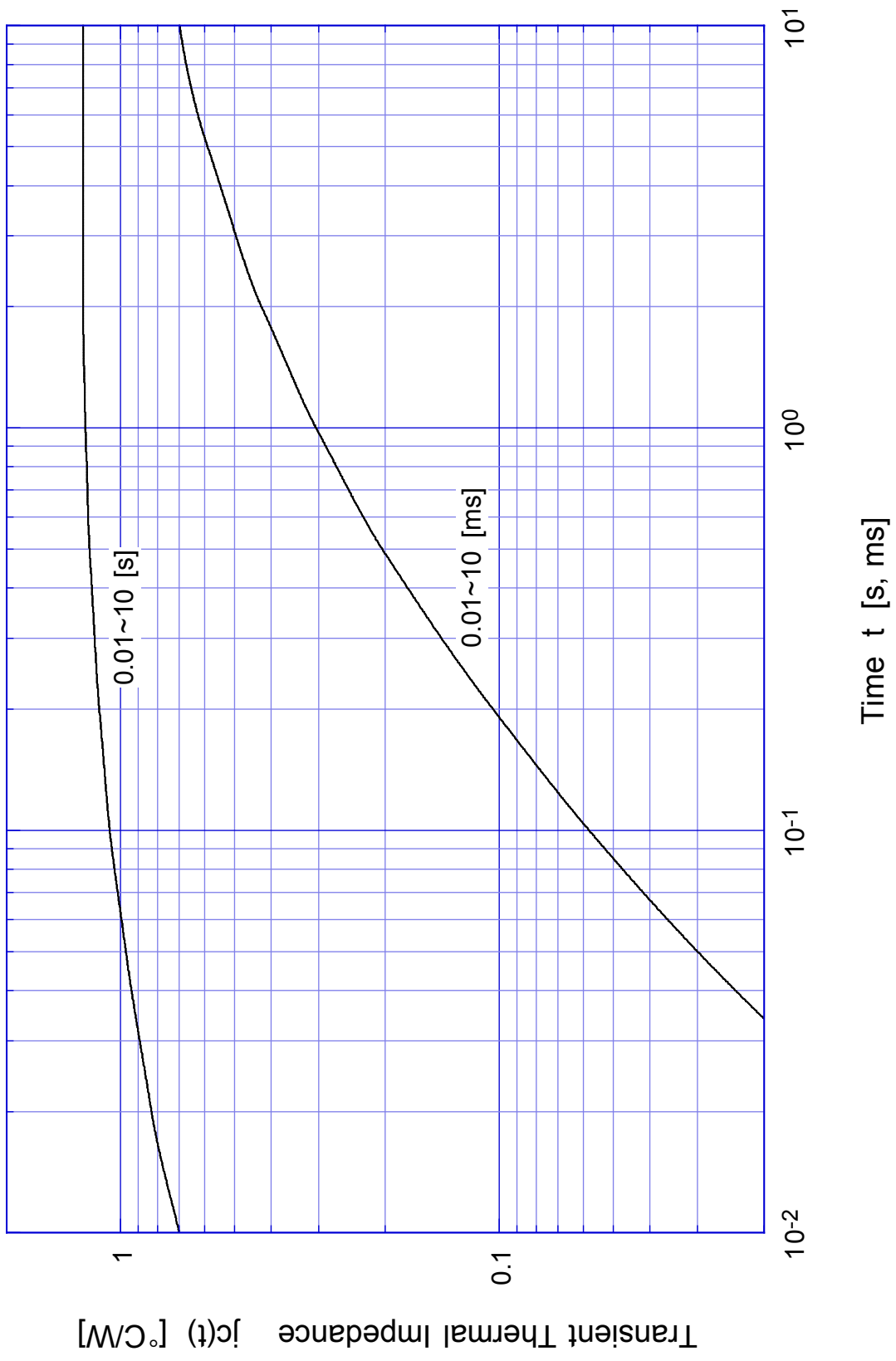
2SD1027

Switching Time - Tc



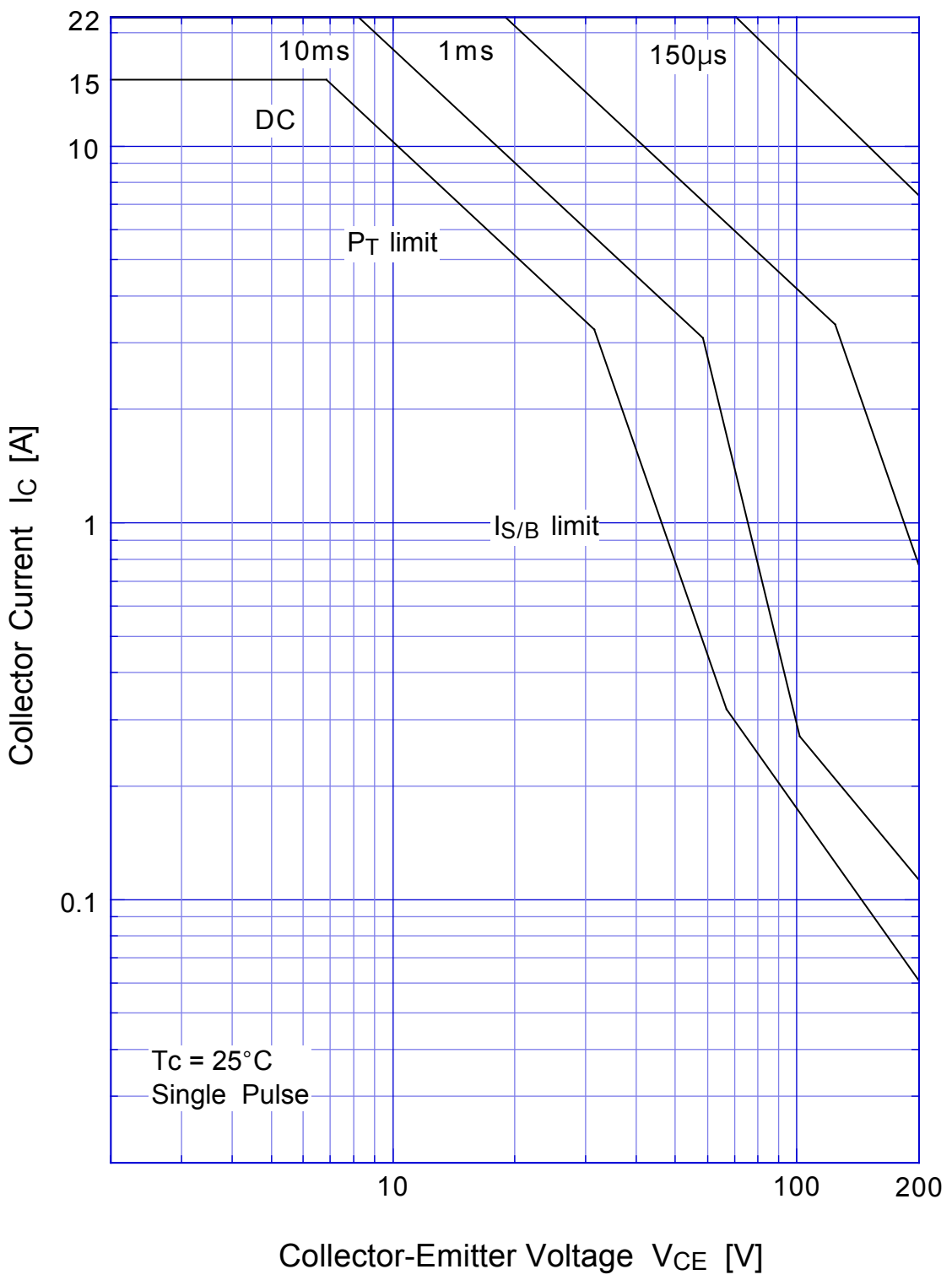
2SD1027

Transient Thermal Impedance

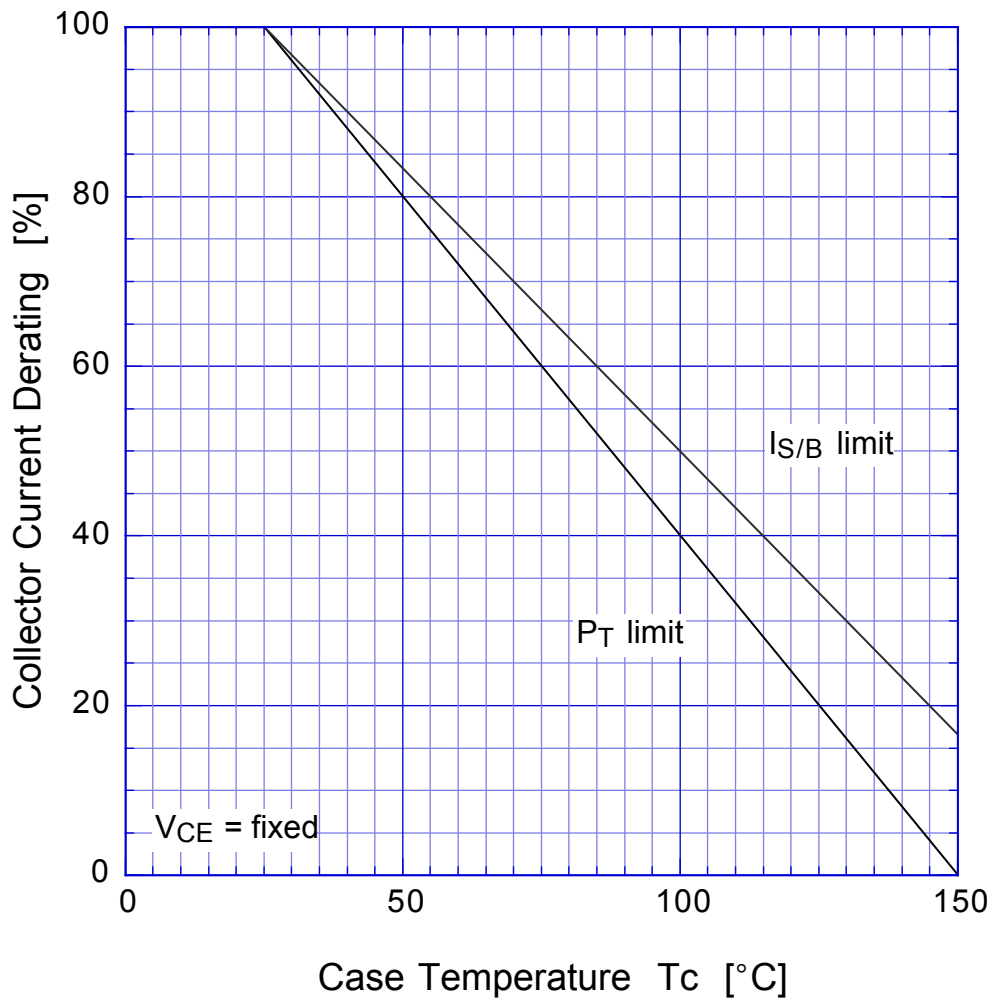


2SD1027

Forward Bias SOA



2SD1027 Collector Current Derating



2SD1027

Reverse Bias SOA

