



Micro Commercial Components
 21201 Itasca Street Chatsworth
 CA 91311
 Phone: (818) 701-4933
 Fax: (818) 701-4939

FR151GP THRU FR157GP

Features

- Low Cost
- Low Leakage
- Low Forward Voltage Drop
- High Current Capability
- Fast Switching Speed For High Efficiency
- Glass Passivated Junction

Maximum Ratings

- Operating Temperature: -55°C to +150°C
- Storage Temperature: -55°C to +150°C

| MCC Catalog Number | Device Marking | Maximum Recurrent Peak Reverse Voltage | Maximum RMS Voltage | Maximum DC Blocking Voltage |
|--------------------|----------------|--|---------------------|-----------------------------|
| FR151GP | --- | 50V | 35V | 50V |
| FR152GP | --- | 100V | 70V | 100V |
| FR153GP | --- | 200V | 140V | 200V |
| FR154GP | --- | 400V | 280V | 400V |
| FR155GP | --- | 600V | 420V | 600V |
| FR156GP | --- | 800V | 560V | 800V |
| FR157GP | --- | 1000V | 700V | 1000V |

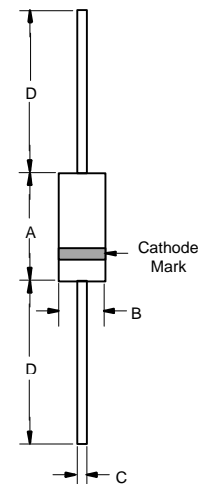
Electrical Characteristics @ 25°C Unless Otherwise Specified

| | | | |
|--|-------------|--|---|
| Average Forward Current | $I_{F(AV)}$ | 1.5 A | $T_A = 55^\circ\text{C}$ |
| Peak Forward Surge Current | I_{FSM} | 50A | 8.3ms, half sine |
| Maximum Instantaneous Forward Voltage | V_F | 1.3V | $I_{FM} = 1.5\text{A}; T_A = 25^\circ\text{C}$ |
| Maximum DC Reverse Current At Rated DC Blocking Voltage | I_R | 5.0 μA 100 μA | $T_A = 25^\circ\text{C}$ $T_A = 100^\circ\text{C}$ |
| Maximum Reverse Recovery Time FR151GP-154GP FR155GP FR156GP-157GP | T_{rr} | 150ns 250ns 500ns | $I_F=0.5\text{A}, I_R=1.0\text{A}, I_{rr}=0.25\text{A}$ |
| Typical Junction Capacitance | C_J | 20pF | Measured at 1.0MHz, $V_R=4.0\text{V}$ |

*Pulse Test: Pulse Width 300 μsec , Duty Cycle 1%

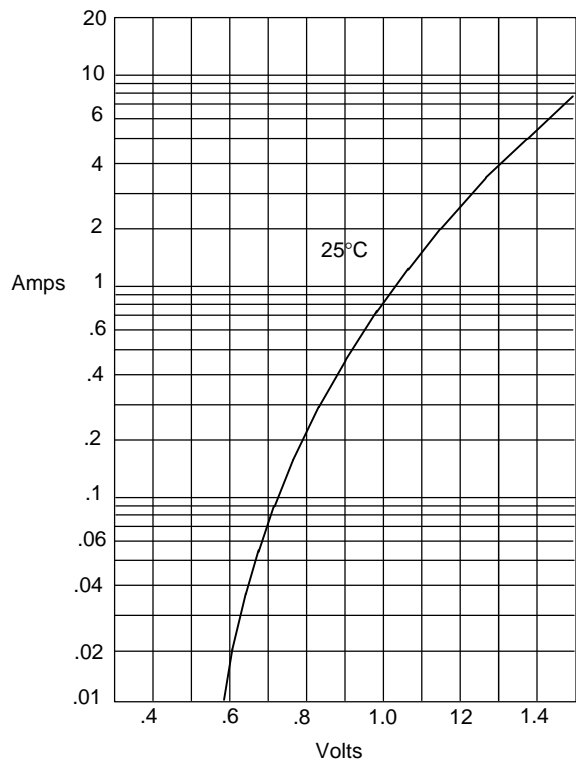
1.5 Amp Glass Passivated Fast Recovery Rectifier 50 to 1000 Volts

DO-15



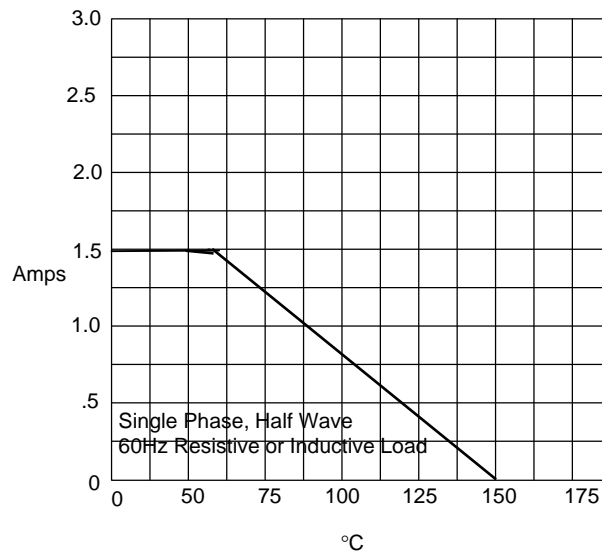
| DIM | DIMENSIONS | | | | NOTE |
|-----|------------|------|-------|------|------|
| | INCHES | | MM | | |
| A | .230 | .300 | 5.80 | 7.60 | |
| B | .104 | .140 | 2.60 | 3.60 | |
| C | .026 | .034 | .70 | .90 | |
| D | 1.000 | --- | 25.40 | --- | |

Figure 1
Typical Forward Characteristics



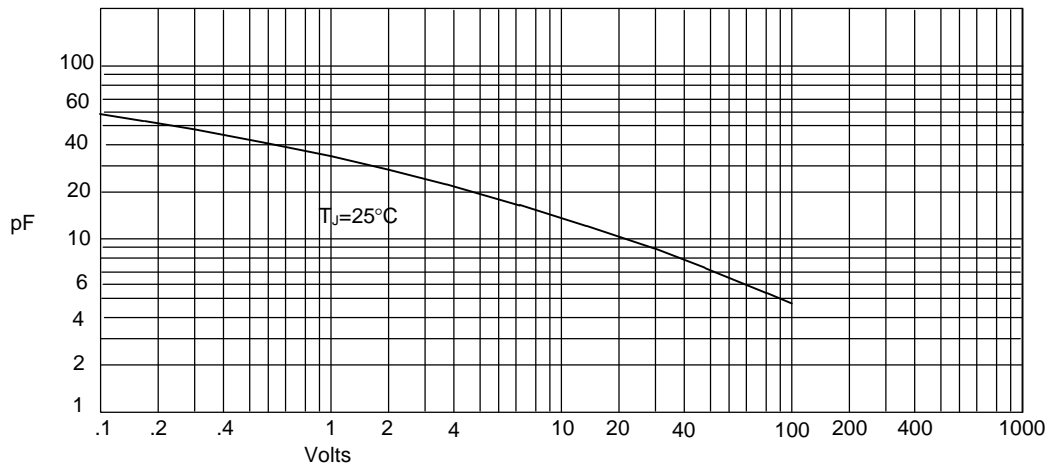
Instantaneous Forward Current - Amperes *versus*
Instantaneous Forward Voltage - Volts

Figure 2
Forward Derating Curve



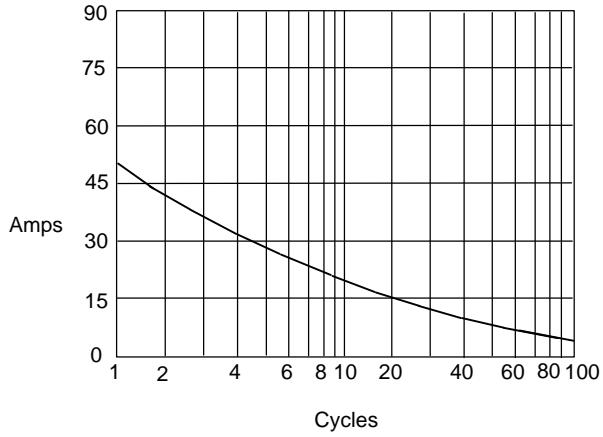
Average Forward Rectified Current - Amperes *versus*
Ambient Temperature - °C

Figure 3
Junction Capacitance



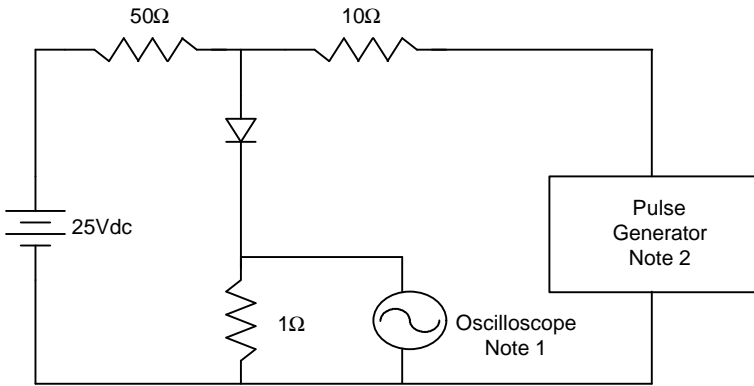
Junction Capacitance - pF *versus*
Reverse Voltage - Volts

Figure 4
Maximum Non-Repetitive Forward Surge Current

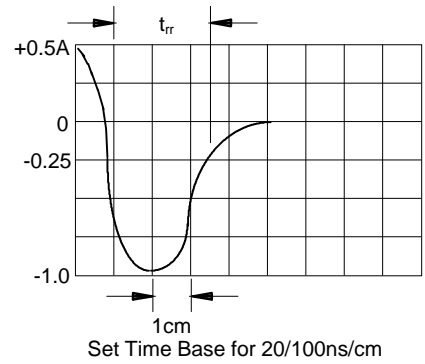


Peak Forward Surge Current - Amperes versus
Number Of Cycles At 60Hz - Cycles

Figure 5
Reverse Recovery Time Characteristic And Test Circuit Diagram



- Notes:
1. Rise Time = 7ns max.
Input impedance = 1 megohm, 22pF
 2. Rise Time = 10ns max.
Source impedance = 50 ohms
 3. Resistors are non-inductive





LittleDiode supplies new, hard to find or obsolete electronic components and semiconductors all over the world.

With over two million different components listed you are sure to find the part you need.

Feel free to visit us today at our online store:

LittleDiode.com

Looking forward to providing you with the best possible service.