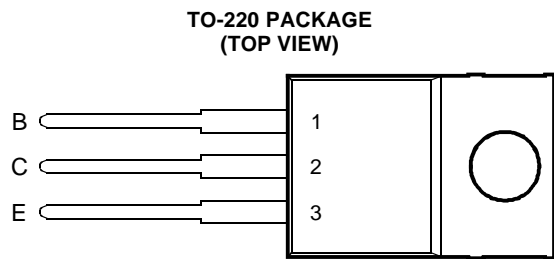


# BD896, BD898, BD900, BD902 PNP SILICON POWER DARLINGTONS

Copyright © 1997, Power Innovations Limited, UK

AUGUST 1993 - REVISED MARCH 1997

- **Designed for Complementary Use with BD895, BD897, BD899 and BD901**
- **70 W at 25°C Case Temperature**
- **8 A Continuous Collector Current**
- **Minimum  $h_{FE}$  of 750 at 3V, 3A**



Pin 2 is in electrical contact with the mounting base.

MDTRACA

### absolute maximum ratings at 25°C case temperature (unless otherwise noted)

RATING		SYMBOL	VALUE	UNIT
Collector-base voltage ( $I_E = 0$ )	BD896	$V_{CBO}$	-45	V
	BD898		-60	
	BD900		-80	
	BD902		-100	
Collector-emitter voltage ( $I_B = 0$ )	BD896	$V_{CEO}$	-45	V
	BD898		-60	
	BD900		-80	
	BD902		-100	
Emitter-base voltage		$V_{EBO}$	-5	V
Continuous collector current		$I_C$	-8	A
Continuous base current		$I_B$	-0.3	A
Continuous device dissipation at (or below) 25°C case temperature (see Note 1)		$P_{tot}$	70	W
Continuous device dissipation at (or below) 25°C free air temperature (see Note 2)		$P_{tot}$	2	W
Operating free-air temperature range		$T_A$	-65 to +150	°C
Operating junction temperature range		$T_j$	-65 to +150	°C
Storage temperature range		$T_{stg}$	-65 to +150	°C

NOTES: 1. Derate linearly to 150°C case temperature at the rate of 0.56 W/°C.  
 2. Derate linearly to 150°C free air temperature at the rate of 16 mW/°C.

## PRODUCT INFORMATION

Information is current as of publication date. Products conform to specifications in accordance with the terms of Power Innovations standard warranty. Production processing does not necessarily include testing of all parameters.

# BD896, BD898, BD900, BD902

## PNP SILICON POWER DARLINGTONS

AUGUST 1993 - REVISED MARCH 1997

### electrical characteristics at 25°C case temperature (unless otherwise noted)

PARAMETER	TEST CONDITIONS			MIN	TYP	MAX	UNIT
$V_{(BR)CEO}$ Collector-emitter breakdown voltage	$I_C = -100 \text{ mA}$	$I_B = 0$	(see Note 3)	BD896 BD898 BD900 BD902	-45 -60 -80 -100		V
$I_{CEO}$ Collector-emitter cut-off current	$V_{CE} = -30 \text{ V}$	$I_B = 0$		BD896 BD898 BD900 BD902		-0.5 -0.5 -0.5 -0.5	mA
$I_{CBO}$ Collector cut-off current	$V_{CB} = -45 \text{ V}$	$I_E = 0$		BD896 BD898 BD900 BD902		-0.2 -0.2 -0.2 -0.2	mA
	$V_{CB} = -45 \text{ V}$	$I_E = 0$	$T_C = 100^\circ\text{C}$	BD896		-2	
	$V_{CB} = -60 \text{ V}$	$I_E = 0$	$T_C = 100^\circ\text{C}$	BD898		-2	
	$V_{CB} = -80 \text{ V}$	$I_E = 0$	$T_C = 100^\circ\text{C}$	BD900		-2	
	$V_{CB} = -100 \text{ V}$	$I_E = 0$	$T_C = 100^\circ\text{C}$	BD902		-2	
$I_{EBO}$ Emitter cut-off current	$V_{EB} = -5 \text{ V}$	$I_C = 0$	(see Notes 3 and 4)			-2	mA
$h_{FE}$ Forward current transfer ratio	$V_{CE} = -3 \text{ V}$	$I_C = -3 \text{ A}$	(see Notes 3 and 4)		750		
$V_{CE(sat)}$ Collector-emitter saturation voltage	$I_B = -12 \text{ mA}$	$I_C = -3 \text{ A}$	(see Notes 3 and 4)			-2.5	V
$V_{BE(on)}$ Base-emitter voltage	$V_{CE} = -3 \text{ V}$	$I_C = -3 \text{ A}$	(see Notes 3 and 4)			-2.5	V
$V_{EC}$ Parallel diode forward voltage	$I_E = -8 \text{ A}$	$I_B = 0$				-3.5	V

NOTES: 3. These parameters must be measured using pulse techniques,  $t_p = 300 \mu\text{s}$ , duty cycle  $\leq 2\%$ .

4. These parameters must be measured using voltage-sensing contacts, separate from the current carrying contacts.

### thermal characteristics

PARAMETER	MIN	TYP	MAX	UNIT
$R_{\theta JC}$ Junction to case thermal resistance			1.79	$^\circ\text{C/W}$
$R_{\theta JA}$ Junction to free air thermal resistance			62.5	$^\circ\text{C/W}$

### resistive-load-switching characteristics at 25°C case temperature

PARAMETER	TEST CONDITIONS †			MIN	TYP	MAX	UNIT
$t_{on}$ Turn-on time	$I_C = -3 \text{ A}$	$I_{B(on)} = -12 \text{ mA}$	$I_{B(off)} = 12 \text{ mA}$		1		$\mu\text{s}$
$t_{off}$ Turn-off time	$V_{BE(off)} = 3.5 \text{ V}$	$R_L = 10 \Omega$	$t_p = 20 \mu\text{s}$ , dc $\leq 2\%$		5		$\mu\text{s}$

† Voltage and current values shown are nominal; exact values vary slightly with transistor parameters.

TYPICAL CHARACTERISTICS

TYPICAL DC CURRENT GAIN  
VS  
COLLECTOR CURRENT

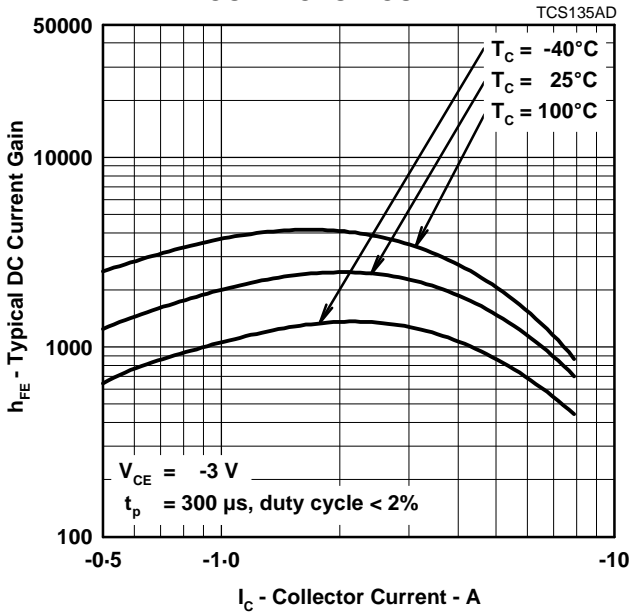


Figure 1.

COLLECTOR-EMITTER SATURATION VOLTAGE  
VS  
COLLECTOR CURRENT

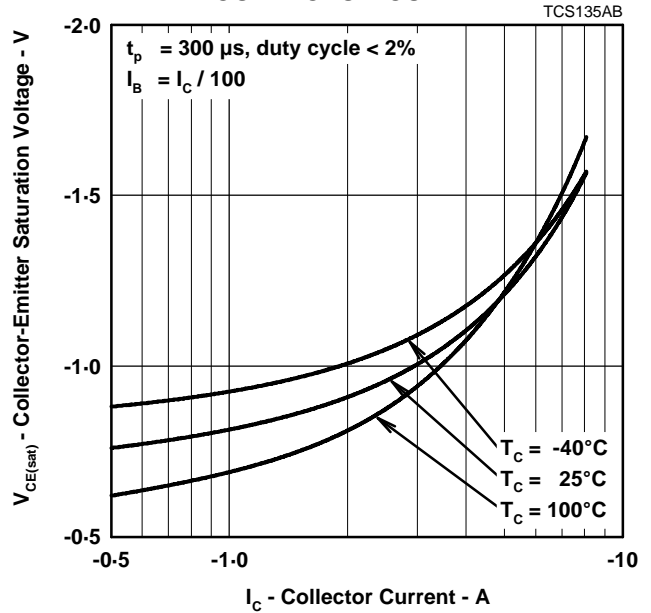


Figure 2.

BASE-EMITTER SATURATION VOLTAGE  
VS  
COLLECTOR CURRENT

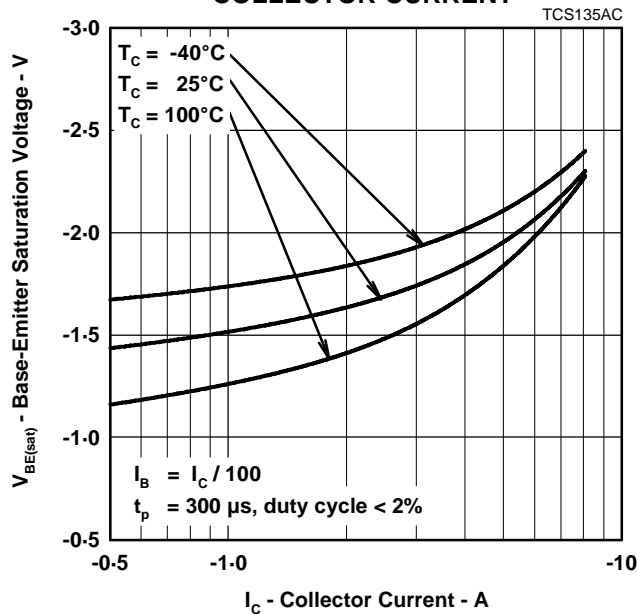


Figure 3.

# BD896, BD898, BD900, BD902 PNP SILICON POWER DARLINGTONS

AUGUST 1993 - REVISED MARCH 1997

## MAXIMUM SAFE OPERATING REGIONS

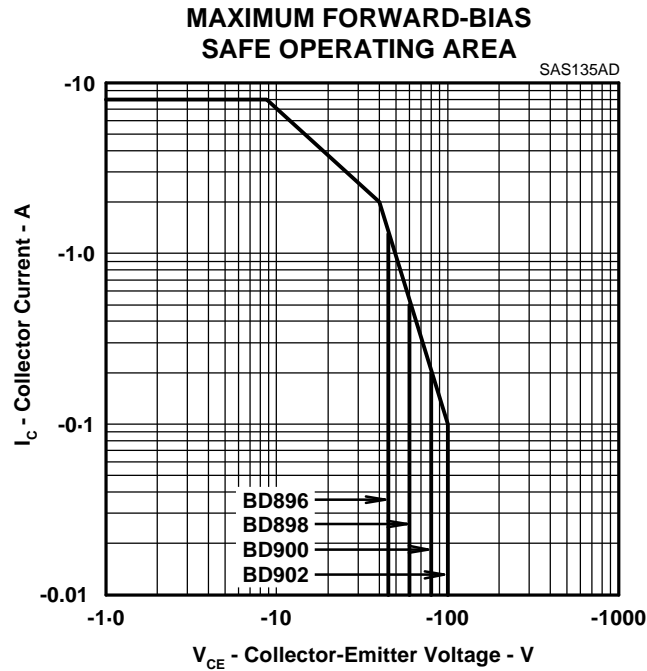


Figure 4.

## THERMAL INFORMATION

### MAXIMUM POWER DISSIPATION VS CASE TEMPERATURE

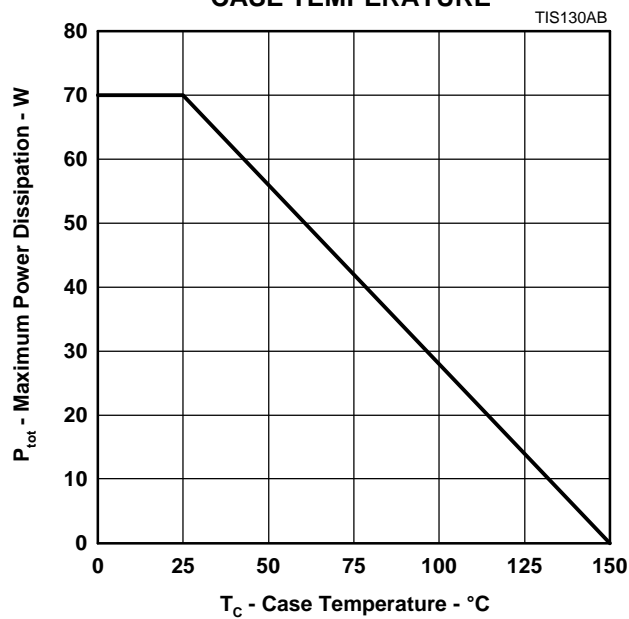


Figure 5.

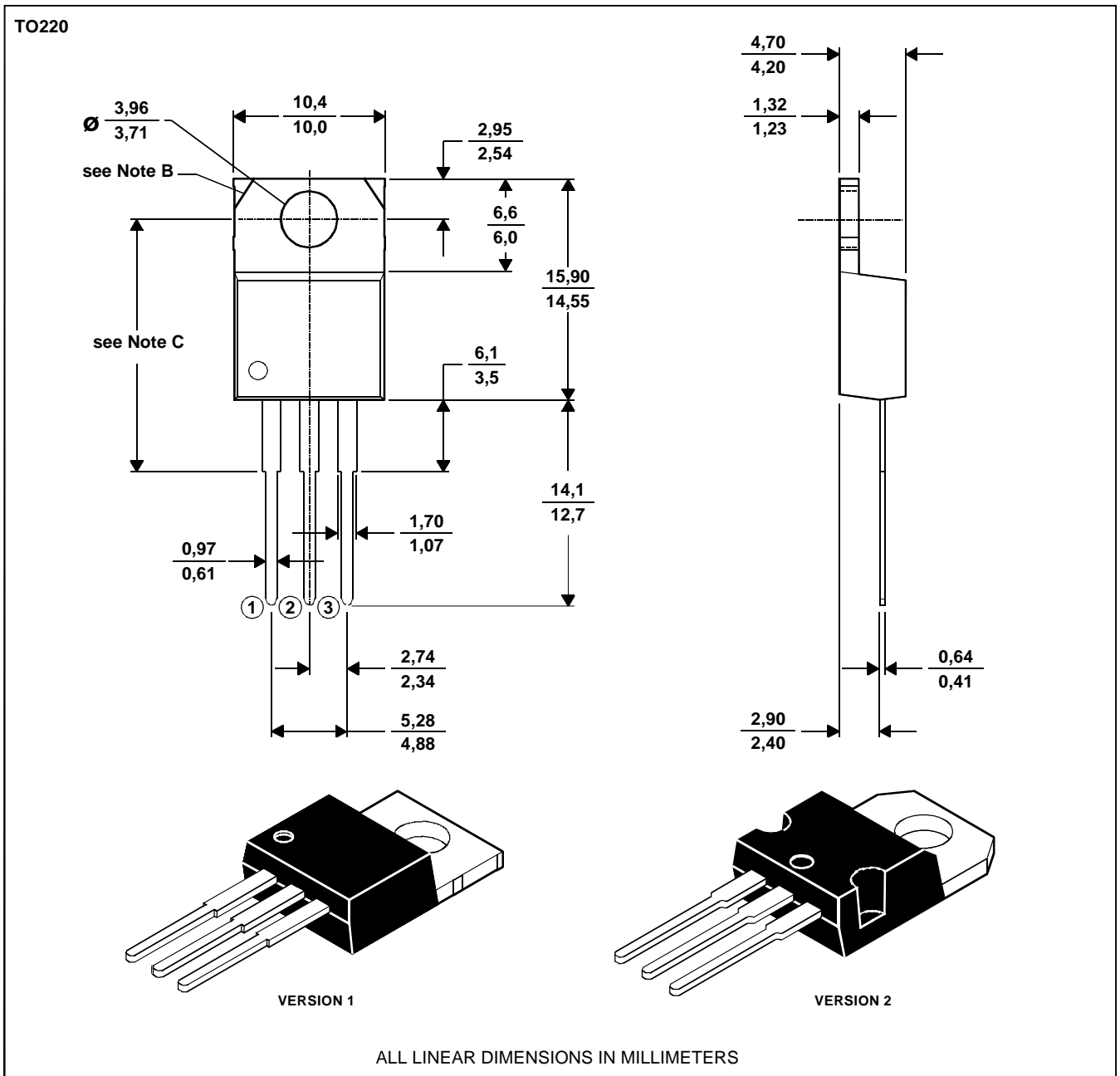
## PRODUCT INFORMATION

MECHANICAL DATA

TO-220

3-pin plastic flange-mount package

This single-in-line package consists of a circuit mounted on a lead frame and encapsulated within a plastic compound. The compound will withstand soldering temperature with no deformation, and circuit performance characteristics will remain stable when operated in high humidity conditions. Leads require no additional cleaning or processing when used in soldered assembly.



- NOTES: A. The centre pin is in electrical contact with the mounting tab.  
 B. Mounting tab corner profile according to package version.  
 C. Typical fixing hole centre stand off height according to package version.  
 Version 1, 18.0 mm. Version 2, 17.6 mm.

MDXXBE

# **BD896, BD898, BD900, BD902**

## **PNP SILICON POWER DARLINGTONS**

AUGUST 1993 - REVISED MARCH 1997

---

### **IMPORTANT NOTICE**

Power Innovations Limited (PI) reserves the right to make changes to its products or to discontinue any semiconductor product or service without notice, and advises its customers to verify, before placing orders, that the information being relied on is current.

PI warrants performance of its semiconductor products to the specifications applicable at the time of sale in accordance with PI's standard warranty. Testing and other quality control techniques are utilized to the extent PI deems necessary to support this warranty. Specific testing of all parameters of each device is not necessarily performed, except as mandated by government requirements.

PI accepts no liability for applications assistance, customer product design, software performance, or infringement of patents or services described herein. Nor is any license, either express or implied, granted under any patent right, copyright, design right, or other intellectual property right of PI covering or relating to any combination, machine, or process in which such semiconductor products or services might be or are used.

PI SEMICONDUCTOR PRODUCTS ARE NOT DESIGNED, INTENDED, AUTHORIZED, OR WARRANTED TO BE SUITABLE FOR USE IN LIFE-SUPPORT APPLICATIONS, DEVICES OR SYSTEMS.

Copyright © 1997, Power Innovations Limited

PRODUCT INFORMATION



LittleDiode supplies new, hard to find or obsolete electronic components and semiconductors all over the world.

With over two million different components listed you are sure to find the part you need.

Feel free to visit us today at our online store:

[LittleDiode.com](http://LittleDiode.com)

Looking forward to providing you with the best possible service.