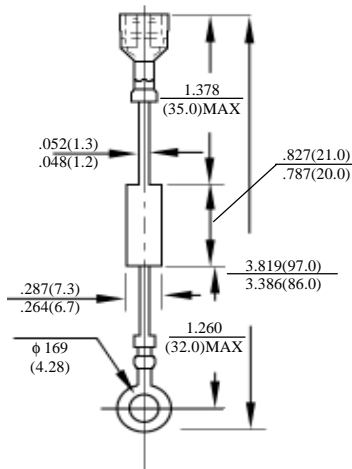


HVM5 – HVM16
HVP5 – HVP16

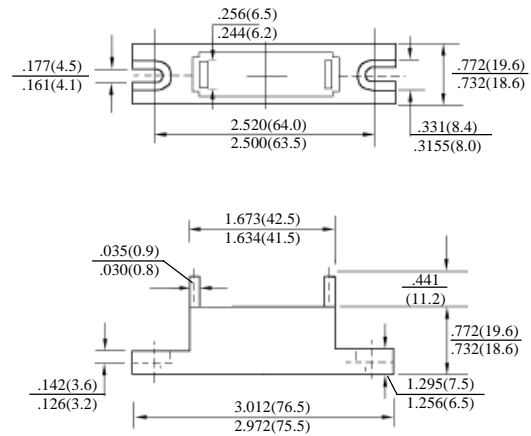
高压二极管
HIGH – VOLTAGE DIODES

最大额定值、电性 MAXIMUM RATINGS AND ELECTRICAL CHARACTERISTICS
 Ratings at 25°C ambient temperature unless otherwise specified. Single phase, half wave, 60Hz, resistive or inductive load. For capacitive load, derate current by 20%.

型号 TYPE	最大反向 峰值电压 Maximum Peak Reverse Voltage	最大平均 正向电流 Maximum Average Forward Output Current @T _A =60°C	最大正向 浪涌电流 Maximum Forward Peak Surge Current @ 8.3ms Superimposed	最大正向 峰值电压 Maximum DC Forward Voltage drop per element	最大反向 电 流 Maximum DC Reverse Current at rated DC Blocking Voltage per element		结 温 Operating Junction Temperature	外型尺寸 Package Dimensions
	PRV	I _O	I _{FM} (Surge)	V _F	I _R		T _J	
	V _{PK}	MA _{AV}	A _{PK}	V _{PK}	25°CCTA μADC	125°CCTA μADC	°C	
HVM5 HVM8 HVM10 HVM12 HVM14 HVM15 HVM16	5000 8000 10000 12000 14000 15000 16000	350	30	at I _F =0.35ADC 8.0 9.0 12 12 14 14 14	10	500	135	HVM
HVP5 HVP8 HVP10 HVP12 HVP14 HVP15 HVP16	5000 8000 10000 12000 14000 15000 16000	750	50	at I _F =0.75ADC 8.0 9.0 12 12 14 14 14	10	500	130	HVP



HVM



HVP

HVM5-HVM16 HVP5-HVP16

高压二极管额定值与特性曲线

RATING & CHARACTERISTIC CURVES OF HIGH-VOLTAGE DIODES

FIG. 1 - CURRENT DERATING

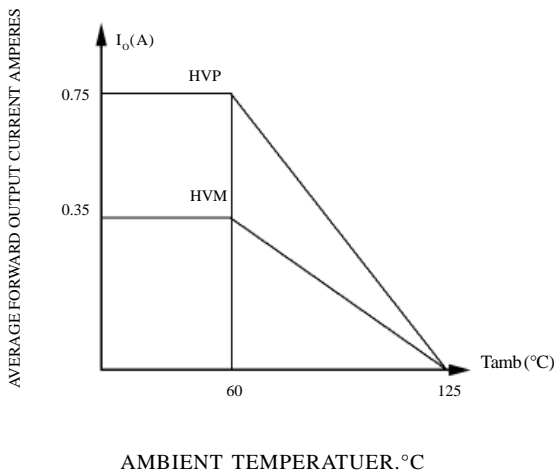


FIG. 2 - MAXIMUM NON-REPETITIVE PEAK FORWARD SURGE CURRENT

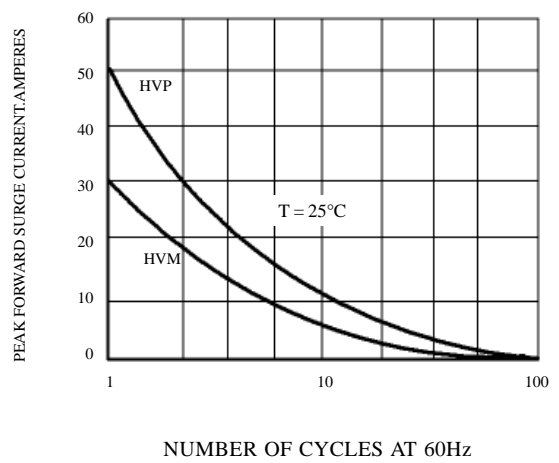


FIG. 4 - TYPICAL FORWARD CHARACTERISTICS

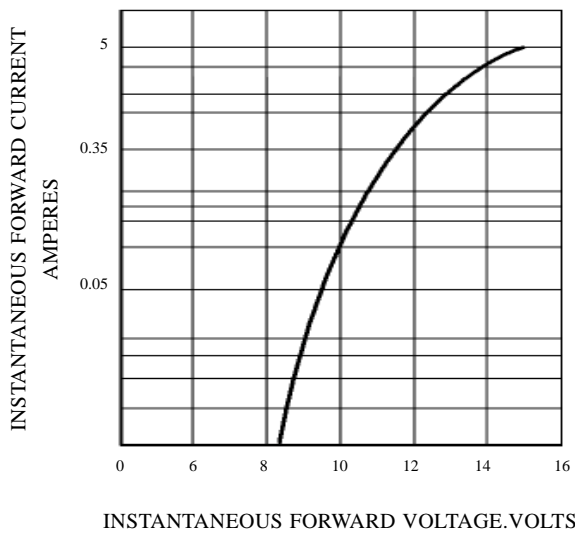
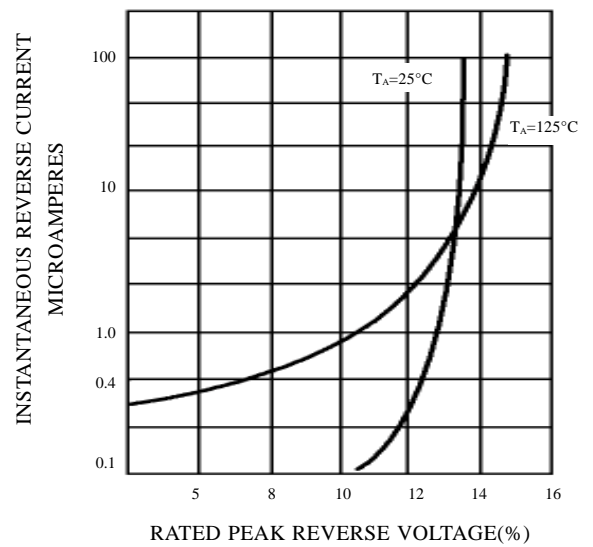


FIG. 3 - TYPICAL REVERSE CHARACTERISTICS





LittleDiode supplies new, hard to find or obsolete electronic components and semiconductors all over the world.

With over two million different components listed you are sure to find the part you need.

Feel free to visit us today at our online store:

LittleDiode.com

Looking forward to providing you with the best possible service.