

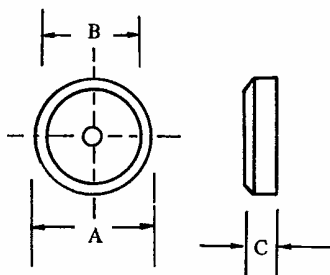
OPERATING AND STORAGE TEMPERATURE -65°C to +150°C

TYPE	Maximum Peak Reverse Voltage	Maximum Average Rectified Current @ Half-Wave Resistive Load 60Hz		Maximum Forward Peak Surge Current @ 8,3ms Superimposed	Maximum Reverse Current @ PRV @ 25°C T _A	Maximum Forward Voltage @ 25°C T _A		Maximum Reverse Recovery Time
	PRV	I _o @ T _A		I _{FM} (Surge)	I _R	I _{FM}	V _{FM}	T _{rr}
	V _{PK}	A _{AV}	°C	A _{PK}	μA _{dc}	A _{PK}	V _{PK}	nS

RECTIFIER CELLS

CR101	50	1.0	35	50	5.0	1.0	1.0	
CR102	100	1.0	35	50	5.0	1.0	1.0	
CR103	200	1.0	35	50	5.0	1.0	1.0	
CR104	400	1.0	35	50	5.0	1.0	1.0	
CR105	600	1.0	35	50	5.0	1.0	1.0	
CR106	800	1.0	35	50	5.0	1.0	1.0	
CR107	1000	1.0	35	50	5.0	1.0	1.0	
CR301	50	3.0	35	150	5.0	3.0	1.0	
CR302	100	3.0	35	180	5.0	3.0	1.0	
CR303	200	3.0	35	150	5.0	3.0	1.0	
CR304	400	3.0	35	150	5.0	3.0	1.0	
CR305	600	3.0	35	150	5.0	3.0	1.0	
CR306	800	3.0	35	150	5.0	3.0	1.0	
CR307	1000	3.0	35	150	5.0	3.0	1.0	
CR501	50	5.0	35	400	5.0	5.0	0.95	
CR502	100	5.0	35	400	5.0	5.0	0.95	
CR503	200	5.0	35	400	5.0	5.0	0.95	
CR504	400	5.0	35	400	5.0	5.0	0.95	
CR505	600	5.0	35	400	5.0	5.0	0.95	
CR506	800	5.0	35	400	5.0	5.0	0.95	
CR507	1000	5.0	35	400	5.0	5.0	0.95	
FCR101	50	1.0	35	50	5.0	1.0	1.3	200
FCR102	100	1.0	35	50	5.0	1.0	1.3	200
FCR103	200	1.0	35	50	5.0	1.0	1.3	200
FCR104	400	1.0	35	50	5.0	1.0	1.3	200
FCR105	600	1.0	35	50	5.0	1.0	1.3	200
FCR106	800	1.0	35	50	5.0	1.0	1.3	500
FCR107	1000	1.0	35	50	5.0	1.0	1.3	500
FCR301	50	3.0	35	150	5.0	3.0	1.3	200
FCR302	100	3.0	35	150	5.0	3.0	1.3	200
FCR303	200	3.0	35	150	5.0	3.0	1.3	200
FCR304	400	3.0	35	150	5.0	3.0	1.3	200
FCR305	600	3.0	35	150	5.0	3.0	1.3	200
FCR306	800	3.0	35	150	5.0	3.0	1.3	500
FCR307	1000	3.0	35	150	5.0	3.0	1.3	500
FCR501	50	5.0	35	400	5.0	5.0	1.3	200
FCR502	100	5.0	35	400	5.0	5.0	1.3	200
FCR503	200	5.0	35	400	5.0	5.0	1.3	200
FCR504	400	5.0	35	400	5.0	5.0	1.3	200
FCR505	600	5.0	35	400	5.0	5.0	1.3	200
FCR506	800	5.0	35	400	5.0	5.0	1.3	500
FCR507	1000	5.0	35	400	5.0	5.0	1.3	500

DIMENSION



	A	B	C
1A	.082±.003 (2.08±.08)	.062±.003 (1.57±.08)	.083±.002 (2.1±.05)
3A	.157±.002 (4.0±.05)	.125±.002 (3.17±.05)	.083±.002 (2.1±.05)
5A	.220±.002 (5.7±.05)	.190±.002 (.48±.05)	.083±.002 (2.1±.05)

NOTE: Thinner cell with suffix code "T".

This datasheet has been downloaded from:

www.DatasheetCatalog.com

Datasheets for electronic components.



LittleDiode supplies new, hard to find or obsolete electronic components and semiconductors all over the world.

With over two million different components listed you are sure to find the part you need.

Feel free to visit us today at our online store:

LittleDiode.com

Looking forward to providing you with the best possible service.