

# HER251 - HER258

**PRV : 50 - 1000 Volts**  
**Io : 2.5 Amperes**

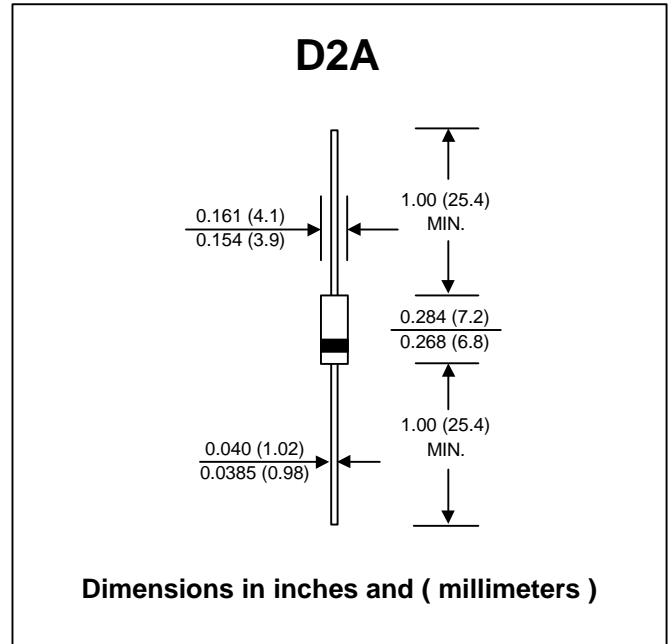
## FEATURES :

- \* High current capability
- \* High surge current capability
- \* High reliability
- \* Low reverse current
- \* Low forward voltage drop
- \* Fast switching for high efficiency

## MECHANICAL DATA :

- \* Case : D2A Molded plastic
- \* Epoxy : UL94V-O rate flame retardant
- \* Lead : Axial lead solderable per MIL-STD-202, Method 208 guaranteed
- \* Polarity : Color band denotes cathode end
- \* Mounting position : Any
- \* Weight : 0.645 gram

# HIGH EFFICIENT RECTIFIER DIODES



## MAXIMUM RATINGS AND ELECTRICAL CHARACTERISTICS

Rating at 25 °C ambient temperature unless otherwise specified.  
 Single phase, half wave, 60 Hz, resistive or inductive load.  
 For capacitive load, derate current by 20%.

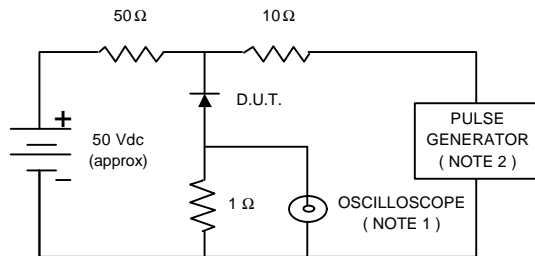
RATING	SYMBOL	HER 251	HER 252	HER 253	HER 254	HER 255	HER 256	HER 257	HER 258	UNIT	
Maximum Recurrent Peak Reverse Voltage	V <sub>RRM</sub>	50	100	200	300	400	600	800	1000	V	
Maximum RMS Voltage	V <sub>RMS</sub>	35	70	140	210	280	420	560	700	V	
Maximum DC Blocking Voltage	V <sub>DC</sub>	50	100	200	300	400	600	800	1000	V	
Maximum Average Forward Current 0.375"(9.5mm) Lead Length      Ta = 55 °C	I <sub>F(AV)</sub>	2.5								A	
Maximum Peak Forward Surge Current, 8.3ms Single half sine wave superimposed on rated load (JEDEC Method)	I <sub>FSM</sub>	100								A	
Maximum Peak Forward Voltage at I <sub>F</sub> = 2.5 A	V <sub>F</sub>	1.1					1.7				V
Maximum DC Reverse Current      Ta = 25 °C at Rated DC Blocking Voltage      Ta = 100 °C	I <sub>R</sub>	10									μA
	I <sub>R(H)</sub>	50									μA
Maximum Reverse Recovery Time ( Note 1 )	T <sub>rr</sub>	50					75				ns
Typical Junction Capacitance ( Note 2 )	C <sub>J</sub>	50								pf	
Junction Temperature Range	T <sub>J</sub>	- 65 to + 150									°C
Storage Temperature Range	T <sub>STG</sub>	- 65 to + 150									°C

### Notes :

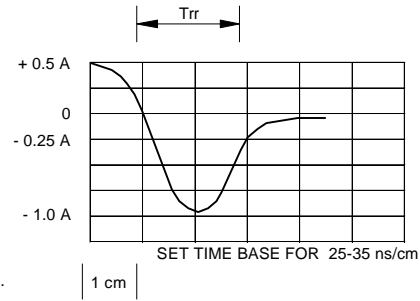
- ( 1 ) Reverse Recovery Test Conditions : I<sub>F</sub> = 0.5 A, I<sub>R</sub> = 1.0 A, I<sub>rr</sub> = 0.25 A.
- ( 2 ) Measured at 1.0 MHz and applied reverse voltage of 4.0 V<sub>dc</sub>

## RATING AND CHARACTERISTIC CURVES ( HER251 - HER258 )

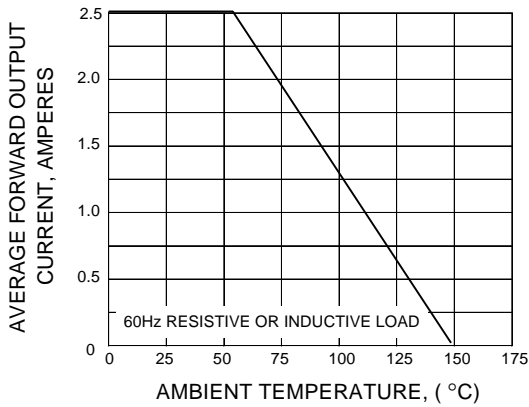
**FIG.1 - REVERSE RECOVERY TIME CHARACTERISTIC AND TEST CIRCUIT DIAGRAM**



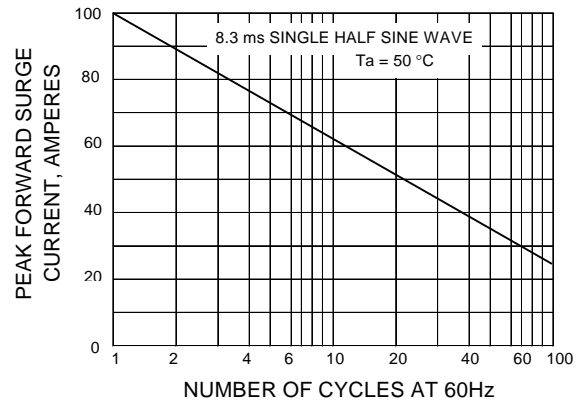
NOTES : 1. Rise Time = 7 ns max., Input Impedance = 1 megaohm, 22 pF.  
 2. Rise time = 10 ns max., Source Impedance = 50 ohms.  
 3. All Resistors = Non-inductive Types.



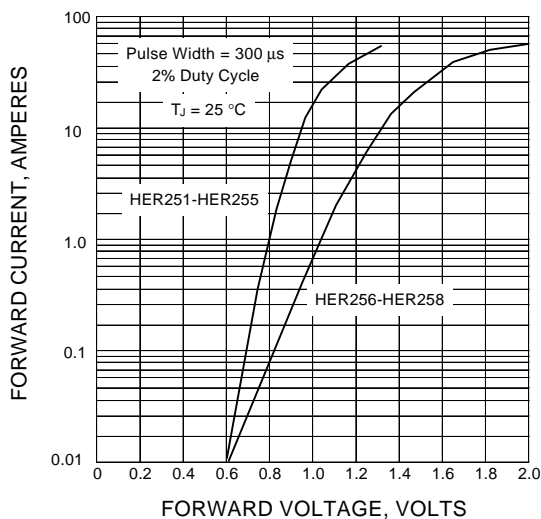
**FIG.2 - DERATING CURVE FOR OUTPUT RECTIFIED CURRENT**



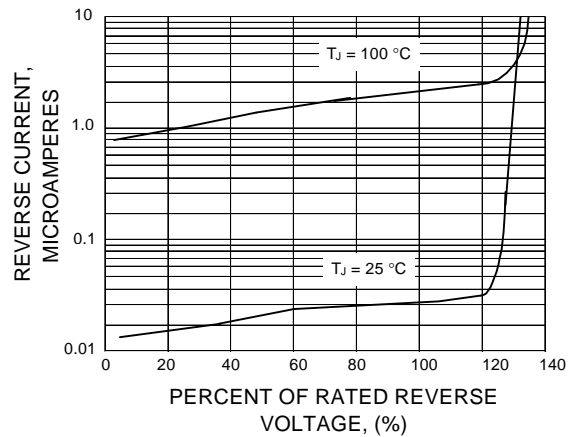
**FIG.3 - MAXIMUM NON-REPETITIVE PEAK FORWARD SURGE CURRENT**



**FIG.4 - TYPICAL FORWARD CHARACTERISTICS**



**FIG.5 - TYPICAL REVERSE CHARACTERISTICS**





LittleDiode supplies new, hard to find or obsolete electronic components and semiconductors all over the world.

With over two million different components listed you are sure to find the part you need.

Feel free to visit us today at our online store:

**[LittleDiode.com](http://LittleDiode.com)**

Looking forward to providing you with the best possible service.