

PRESSFIT RECTIFIER DIODES

Features and Descriptions

- Convenient pressfit package
- Available with and without leads
- High surge capabilities

50 A

Application

- Welders, Battery charges, Alternators

Major Ratings and Characteristics

Parameters	8AF	Units
$I_{F(AV)}$	50	A
@ T_C	150	°C
$I_{F(RMS)}$	79	A
I_{FSM} @50Hz	714	A
@60Hz	747	A
I^2t @50Hz	2546	A ² s
@60Hz	2324	A ² s
$I^2\sqrt{t}$	25455	A ² √s
V_{RRM} range	100 to 800	V
T_J	-65 to 195	°C



8AF Series

Bulletin I20262 Rev.A 06/03

International
IR Rectifier

ELECTRICAL SPECIFICATIONS

Voltage Ratings

Type number	Voltage Code	V_{RRM} , maximum repetitive peak reverse voltage V	V_{RSM} , maximum non-repetitive peak rev. voltage V	I_{RRM} max. @ $T_J = 150^\circ\text{C}$ mA
8AF	1	100	150	5
	2	200	300	5
	4	400	500	5
	8	800	900	5

Forward Conduction

Parameter	8AF	Units	Conditions
$I_{F(AV)}$ Maximum average forward current @ Case temperature	50	A	180° conduction, half sine wave
	150	°C	
$I_{F(RMS)}$ Maximum RMS forward current	79	A	
I_{FSM} Maximum peak, one-cycle forward, non-repetitive surge current	714	A	t = 10ms No voltage
	747		t = 8.3ms reapplied
	600		t = 10ms 100% V_{RRM}
	628		t = 8.3ms reapplied
I^2t Maximum I^2t for fusing	2546	A ² s	t = 10ms No voltage
	2324		t = 8.3ms reapplied
	1800		t = 10ms 100% V_{RRM}
	1643		t = 8.3ms reapplied
$I^2\sqrt{t}$ Maximum $I^2\sqrt{t}$ for fusing	25455	A ² √s	t = 0.1 to 10ms, no voltage reapplied
$V_{F(TO)1}$ Low level value of threshold voltage	0.60	V	$(16.7\% \times \pi \times I_{F(AV)} < I < \pi \times I_{F(AV)})$, $T_J = T_J \text{ max.}$
$V_{F(TO)2}$ High level value of threshold voltage	0.68	V	$(\pi \times I_{F(AV)} < I < 20 \times \pi \times I_{F(AV)})$, $T_J = T_J \text{ max.}$
r_{f1} Low level value of forward slope resistance	6.66	mΩ	$(16.7\% \times \pi \times I_{F(AV)} < I < \pi \times I_{F(AV)})$, $T_J = T_J \text{ max.}$
r_{f2} High level value of forward slope resistance	6.25	mΩ	$(\pi \times I_{F(AV)} < I < 20 \times \pi \times I_{F(AV)})$, $T_J = T_J \text{ max.}$
V_{FM} Maximum forward voltage drop	1.45	V	$T_J = 25^\circ\text{C}$, $I_{FM} = \pi \times \text{rated } I_{F(AV)}$

Thermal and Mechanical Specifications

Parameter	8AF	Units	Conditions
T_J Max. junction operating temperature range	- 65 to 195	°C	
T_{stg} Storage temperature range	- 65 to 195		
R_{thJC} Max. thermal resistance, junction to case	0.60	KW	DC operation
R_{thCS} Typical thermal resistance, case to heatsink	0.50		As per mounting details
wt Approximate weight	10 (0.36)	g (oz)	
Case style	B-47		See outline table

MOUNTING: A $12.6 \pm 0.02\text{mm}$ (0.496 to 0.497 inch) diameter hole should be drilled in heatsink, the leading edge chamfered to 0.038mm (0.015 inch) x 45°. The diode should then be press fitted, ensuring that the sides of the diode are kept parallel to the sides of the hole.

ΔR_{thJC} Conduction

(The following table shows the increment of thermal resistance R_{thJC} when devices operate at different conduction angles than DC)

Conduction angle	Sinusoidal conduction	Rectangular conduction	Units	Conditions
180°	0.042	0.026	K/W	$T_J = T_{J \text{ max.}}$
120°	0.045	0.043		
90°	0.06	0.06		
60°	0.10	0.10		
30°	0.15	0.15		

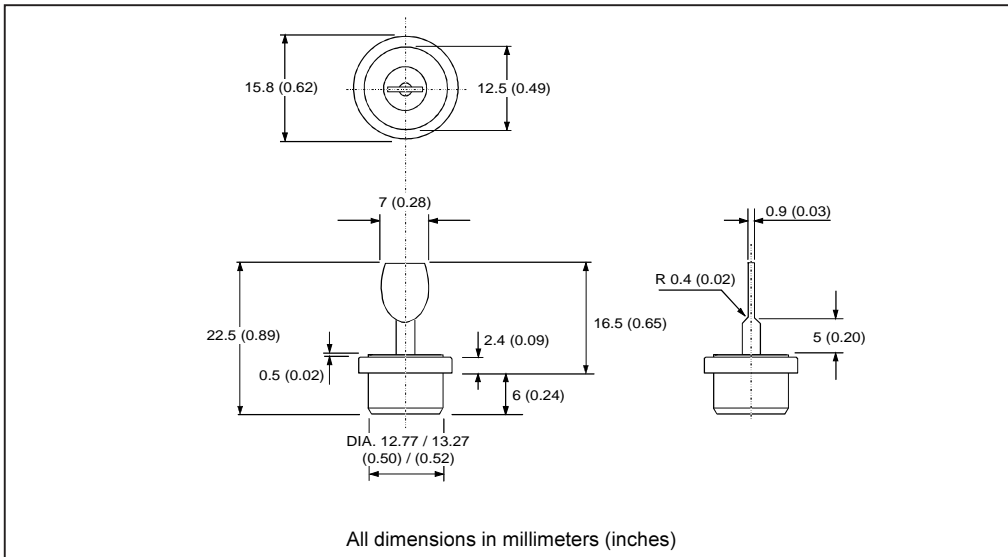
Ordering Information Table

Device Code

8AF	8	N	LV
①	②	③	④

- 1** - Essential part number
- 2** - Voltage code: Code x 100 = V_{RRM} (See Voltage Ratings Table)
- 3** - N = Normal Polarity (cathode to case)
 R = Reverse Polarity (anode to case)
- 4** - PP = Without Lead
 LH = Horizontal Lead
 LV = Vertical Lead
 Available as special product - Contact Factory

Outline Table



8AF Series

Bulletin I20262 Rev.A 06/03

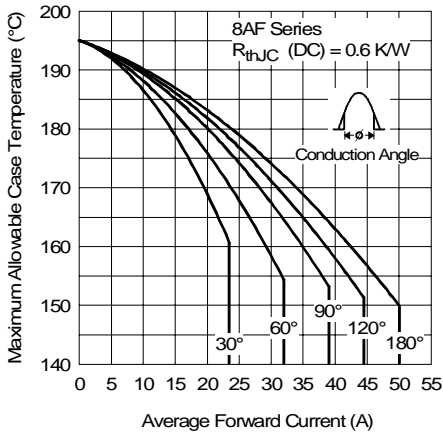


Fig. 1 - Current Ratings Characteristics

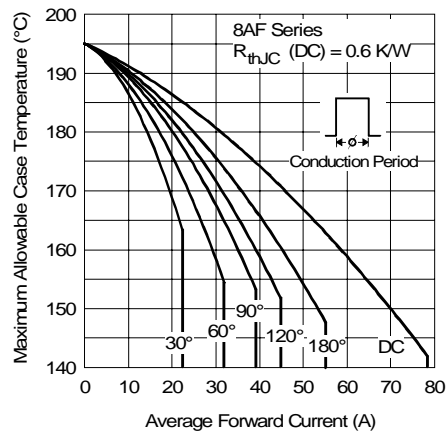


Fig. 2 - Current Ratings Characteristics

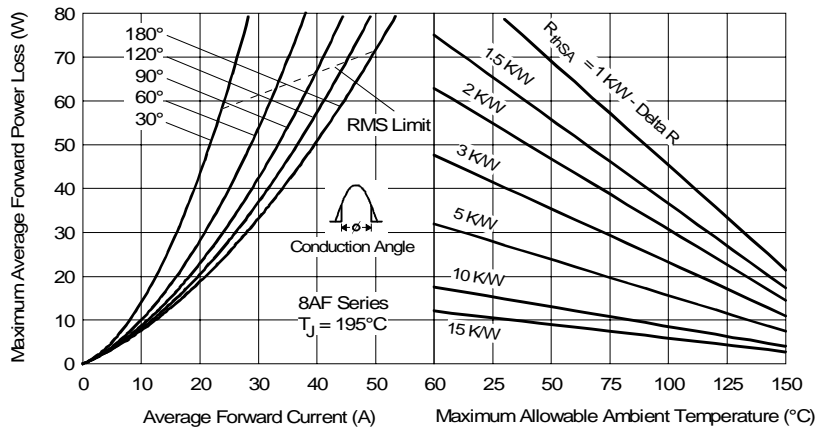


Fig. 3 - Forward Power Loss Characteristics

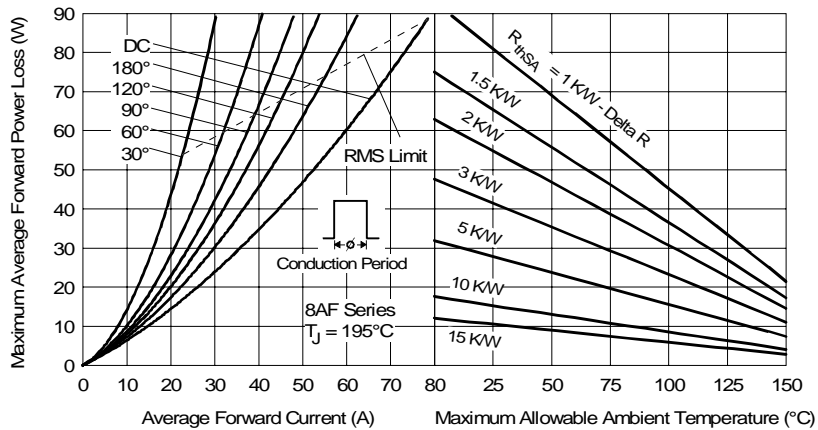


Fig. 4 - Forward Power Loss Characteristics

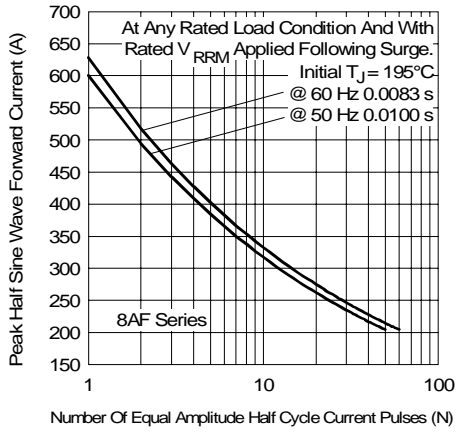


Fig. 5 - Maximum Non-Repetitive Surge Current

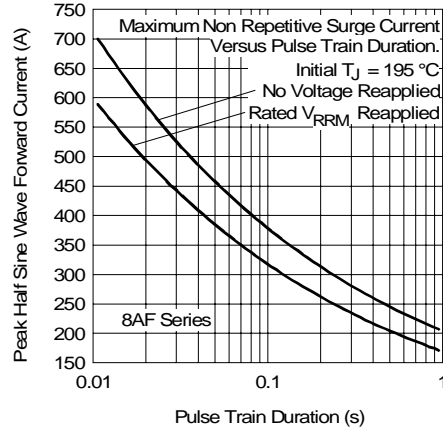


Fig. 6 - Maximum Non-Repetitive Surge Current

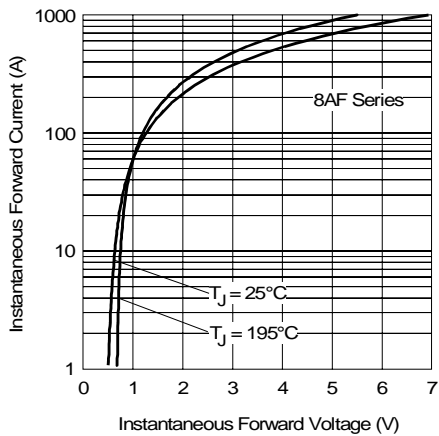


Fig. 7 - Forward Voltage Drop Characteristics

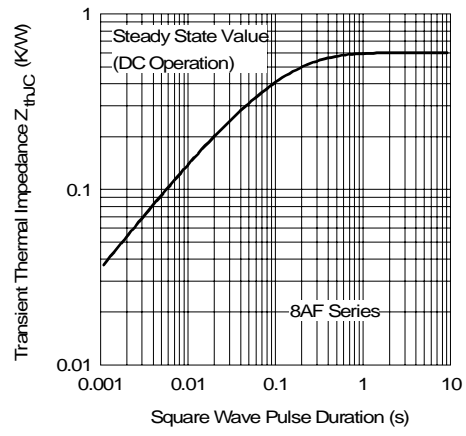


Fig. 8 - Thermal Impedance Z_{thJC} Characteristic

This datasheet has been downloaded from:

www.DatasheetCatalog.com

Datasheets for electronic components.



LittleDiode supplies new, hard to find or obsolete electronic components and semiconductors all over the world.

With over two million different components listed you are sure to find the part you need.

Feel free to visit us today at our online store:

LittleDiode.com

Looking forward to providing you with the best possible service.